



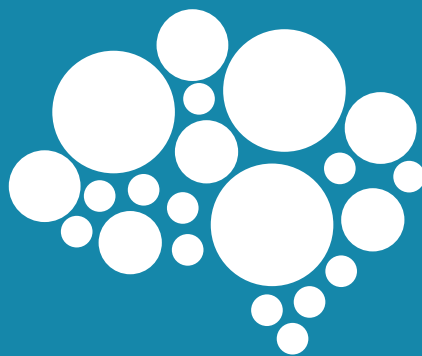
ANNUAL REPORT

2024-2025



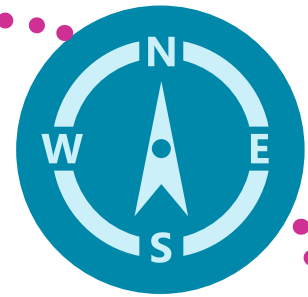
Our Mission:

The Early Learning Coalition of Hillsborough County provides children, birth to 5 years, high quality, equitable, and inclusive early learning experiences, preparing them for success in school and life through the collaboration of families, educators, and the community.



elhc.org

TABLE OF CONTENTS



EVALUATION OF DIRECT ENHANCEMENT SERVICES

Message from the CEO	2
Comprehensive Consumer Education	3
Provider Financial Supports	5
Training and Technical Assistance	6
Quality Activities for Infant and Toddler Care.....	14
Monitoring.....	20
Inclusion	21

DATA SUMMARY

Children Served in School Readiness.....	24
Child Disenrollment	27
Provider Type.....	28
School Readiness Provider Revocation.....	28
Voluntary Prekindergarten Provider Revocation..	28
Children Served by Provider	29

FISCAL SUMMARY

Program Funds	55
Details of Expenditures by Fund Source	56
Coalition Staff and Related Expenditures.....	56

ELCHC BOARD OF DIRECTORS.....57

**Page 28 contains sensitive information. If you wish to view this page, please contact Community Relations at communityrelations@elchc.org*

EVALUATION OF DIRECT ENHANCEMENT SERVICES



MESSAGE FROM THE CEO

Welcome to the Early Learning Coalition of Hillsborough County's Fiscal Year 2025 Annual Report. As I reflect on the past year, I am filled with pride in the resilient, unwavering spirit of our early education community. Together, we weathered both literal and figurative storms. Hurricanes Helene and Milton threatened our homes and livelihoods, yet this remarkable community came together embracing our youngest citizens and ensuring that early education programs could recover and rebuild. Thanks to the steadfast support of corporate partners like the Florida Chamber and nonprofit allies such as Save the Children, we were able to sustain our mission and continue providing vital services during a year of immense challenge.

Our dedicated staff exemplified courage and compassion. Even as they navigated personal storm-related hardships, they remained laser-focused on supporting the stability and growth of the early education workforce. FY 2025 marked the first year of post-pandemic "normalized" funding, bringing with it a new set of financial and operational challenges. In response, our team rose to the occasion with strategic programs, professional development, and personalized coaching designed to uplift teachers, center owners, and directors across our network.

This year also brought transformative advancements in our Voluntary Prekindergarten (VPK) programs. With the introduction of enhanced progress monitoring tools, VPK teachers and families now have valuable insights into each child's learning journey. These tools empower early identification of strengths and challenges ensuring children are supported every step of the way toward kindergarten readiness.

Just as we prepare our homes and families for a hurricane, we must also prepare our children for the lifelong journey of learning. The work of the ELCHC continues, despite challenges we are sure to face. We hold steadfast in the most important message we share with parents and caregivers: Learning begins long before school starts. From infancy, children thrive on the words, songs, conversations, and books that adults share with them. Every caregiver has the power to lay the foundation for a child's future success.

To our incredible early education teachers, directors, center owners and our committed ELCHC staff and board of directors: thank you for another impactful year. Your work transforms lives. You are the steady hands and compassionate hearts that guide our children through every storm.

Together, we are building a future where every child in Hillsborough County enters school ready to learn, grow, and thrive.

Dr. Fred L. Hicks

Chief Executive Officer of ELCHC

EVALUATION OF DIRECT ENHANCEMENT SERVICES

COMPREHENSIVE CONSUMER EDUCATION

Parents in need of childcare frequently encounter the difficulty of finding a program that combines quality care, convenience, affordability, and alignment with their aspirations for their child's educational success. To address this, the Family Services Operations team at the Early Learning Coalition of Hillsborough County (ELCHC) developed a comprehensive strategy that delivers a range of tools and support designed to assist families in securing appropriate childcare placements.

The ELCHC's Intake and Eligibility Counselors are certified to offer Childcare Resource and Referral (CCR&R) services and provide unbiased information and guidance to families about childcare options. CCR&R is a free service for all families in Hillsborough County that helps to identify quality early learning programs, childcare tuition assistance availability, and referrals to other community programs and resources as needed.

In fiscal year 2024–2025, the ELCHC Intake and Eligibility staff provided in-person services at the ELCHC office located at 6302 E Dr. Martin Luther King Jr. Blvd., Suite 100, Tampa, FL. The lobby remains an essential resource to ensure families have the technology assistance needed to complete the online School Readiness (SR) and/or Voluntary Prekindergarten (VPK) application process. Intake and Eligibility staff also provided virtual support to families.

The ELCHC website contains detailed information about the School Readiness Program, including eligibility criteria, application process, and provider listings. Parents and the public can access these resources at their convenience.



Family Support and Service Delivery: Average Response Metrics for Fiscal Year 2024-2025



673 families completed online submissions for Child Care Resource and Referral (CCR&R) services.

100% of CCR&R calls and online inquiries responded to within 48 hours by the Customer Relations Center.

111,974 phone calls from Hillsborough County families seeking information about School Readiness (SR), Voluntary Prekindergarten (VPK), and additional resources for young children.

6,261 families served in person, with 88% receiving assistance within 10 minutes of arrival.

FAMILY ENGAGEMENT

The ELCHC strongly emphasizes family involvement in early childhood education, encouraging parents and guardians to actively participate in their child's learning through various events and initiatives. One of the signature family engagement initiatives, Day of Play, is designed to offer children and families enjoyable and enriching experiences centered on play-based learning activities at no cost to the family. The events are strategically held at Park and Recreation Centers at least three times a year throughout Hillsborough County. Joined by numerous partners, Day of Play serves as a catalyst for raising awareness about the diverse range of resources available in the community to support families and their children's success in both school and life. Fiscal year 2024-2025, the ELCHC Day of Play engaged a total of 890 individuals, of which 350 were children aged birth to five years. To extend the impact beyond the event, every child went home with developmental toys to encourage continued play and exploration and books to inspire a love for literacy at home. With the dedication of many community partners and families, we helped highlight why play matters not only as a joyful experience but also as a powerful tool for building problem-solving skills, communication, and creativity that prepare children for success in kindergarten and beyond.

BOOK DISTRIBUTION

The importance of literacy and early learning research shows that strong foundational skills developed from birth to age five including oral language, alphabet knowledge, phonological awareness, and shared reading are critical predictors of later academic, social, and lifelong success. The Early Learning Coalition of Hillsborough, in partnership with literacy partners Reach Out and Read and Bess the Book Bus, distributed over 27,100 books throughout Hillsborough County. The ELCHC participated in a total of 74 community outreach events.



27,100 books distributed



74 community outreach
events attended

PROVIDER FINANCIAL SUPPORTS

The ELCHC remains steadfast in its commitment to incentivizing and supporting the early childhood education workforce, not only through robust professional development opportunities but also through meaningful financial compensation. Recognizing that a well-prepared and adequately compensated workforce is critical to delivering high-quality early education, the ELCHC has continued to invest in a range of stipend programs designed to reward educational advancement, encourage retention, and support overall professional growth. These stipends reflect our ongoing efforts to elevate the early childhood education profession and ensure that those who nurture our youngest learners are themselves supported and valued.



In fiscal year 2024-2025, the ELCHC disbursed the following stipends to early education teachers and providers:

Hillsborough Infant & Toddler Initiative (HITI)

- Teachers and directors completed 418 hours of required training, earning professional development stipends totaling \$8,950.
- \$900 in coaching stipends was issued for the completion of required coaching.
- A total of \$9,850 in monetary incentives was awarded to teachers and administrative staff.

iSpy of Tampa Bay

- Over \$29,000 in classroom materials was distributed to educators, including loose parts, science exploration tools, books, and robotics resources.
- \$37,875 in stipends was awarded to educators who successfully participated, supporting both professional growth and classroom implementation.

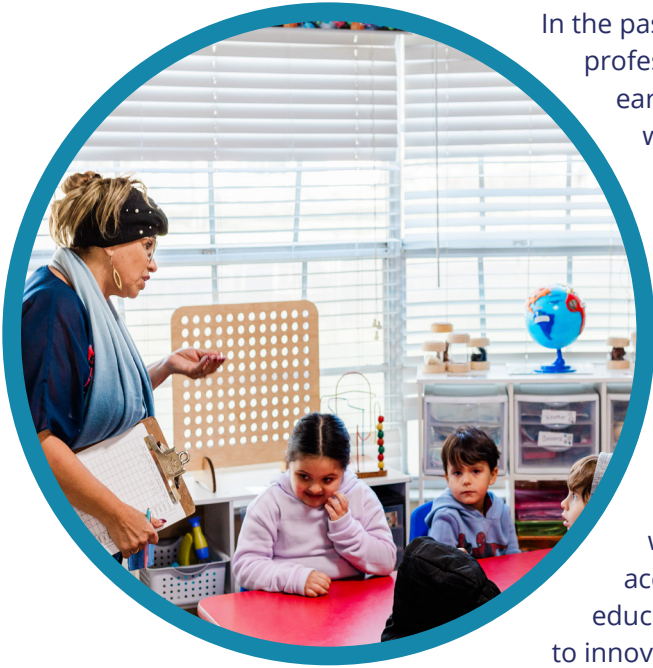
VPK Coaching Cohorts

- Completion stipends of \$300, totaling \$6,450, were awarded to participants who completed all assessments, coursework, and live sessions.

Lost Wages Stipend

- \$231,000 was provided in replacement income for early childhood educators who experienced a loss of income due to closures caused by Hurricane Milton.

TRAINING AND TECHNICAL ASSISTANCE



In the past year, the ELCHC delivered 78 high-quality professional learning events, reaching more than 1,000 early childhood education professionals and families with an impressive 75% completion rate. These efforts were significantly enhanced through strategic partnerships with leading organizations, including WEDU, Hillsborough County Public Schools (HCPS), the Division of Early Learning (DEL), Bertelsen Education, Adapt & Transform Behavior, Technical Assistance and Training system (TATS), ReDefiners World Languages, ZooTampa, Florida Fish & Wildlife, USF Health, and the USF Stavros Center.

To ensure accessibility and engagement, training was offered in multiple formats and languages, accommodating the diverse needs of our early childhood education community. As part of our ongoing commitment to innovation and professional excellence, ELCHC also

launched the Institute for Early Childhood Professionals (IECP) website, a robust Learning Management System designed to expand our outreach and deliver tailored e-learning experiences. The IECP platform supports both virtual and in-person training, empowering educators to strengthen classroom practices and improve program administration across the county.

***CLASS Observation Training and Support**

JumpStart Your CLASS

- English- 50 attended, 28 completed
- Spanish- 53 attended, 25 completed

CLASS Group Coaching (MMCI) Infant, Toddler, and PreK

- 57 attended, 52 completed

**The Classroom Assessment Scoring System (CLASS®) is an observation instrument that assesses the quality of teacher-child interactions in center-based preschool classrooms. CLASS® includes three domains or categories of teacher-child interactions that support children's learning and development: Emotional Support, Classroom Organization, and Instructional Support. Within each domain are dimensions that capture more specific details about teachers' interactions with children.*

TRAINING OFFERED

EARLY LEARNING STANDARDS

Outdoor Learning

Prepare to dive into the thrilling world of outdoor learning, where curiosity and exploration take center stage! This isn't just any training session; it's an exhilarating opportunity for providers to discover the wonders of nature alongside young learners. By harnessing the diverse and captivating PBS KIDS properties, the trainer will lead engaging preschool activities that are specifically crafted to ignite a sense of adventure in every child. Imagine the joy as little ones embark on explorations that stimulate their senses, encourage creativity, and foster a love for the great outdoors. Get ready to inspire and be inspired as we transform ordinary playtime into extraordinary journeys of discovery!

It's OK To Play In VPK!

Research shows that young children learn best through hands-on experiences that have been planned by knowledgeable teachers. To parents, this may look like "just play," but it is active learning. When young children explore things directly with their senses and practice new skills through play, they are learning in ways that are meaningful to them at their stage of development. This Educator Component of DEL's It's OK To Play In VPK! is designed to reinforce this knowledge and ensure implementation of these appropriate learning opportunities and teaching methods in Florida's VPK classrooms. Through very interactive virtual and in-person sessions, the goal is to empower teachers with confidence and conviction to promote and provide authentic, intentional play-based learning in the VPK classroom. Though this course is designed specifically for the VPK classroom, it is appropriate for teachers of any preschool age group.

FSU 10 Components of Quality Care for Infants and Toddlers - Component 3: Environments for Learning

Participants will look at the importance of providing environments for infants and toddlers that support their unique developmental needs. The areas of focus will include comfortable environments, social-surroundings, thoughtfully planned caregiving settings, settings for exploration, opportunities for active movement & learning and fresh air living environments.

FSU 10 Components of Quality Care for Infants and Toddlers - Componente 3: Entornos para el aprendizaje

Los participantes observarán la importancia de proporcionar entornos para bebés y niños pequeños

que respalden sus necesidades de desarrollo únicas. Las áreas de enfoque incluirán entornos cómodos, entornos sociales, entornos de cuidado cuidadosamente planificados, entornos para la exploración, oportunidades para el movimiento activo y el aprendizaje y entornos de vida con aire fresco.

Hook Them with Books

This learning event is designed for new and veteran preschool teachers. Learners will learn how to create a literacy-rich environment preparing preschoolers for kindergarten. Learners will also have an opportunity to create developmentally appropriate literacy activities and materials. Learners will receive a copy of the NAEYC resource learning about language and literacy

Onset, Rime and Alphabet Time

This learning event is designed to discuss the many hands-on methods for teaching emergent literacy skills including writing in the preschool years as well as the differences between phonological awareness and phonics skills.

Comienzo, Rima, y Escritura Alfabetica

Este evento de aprendizaje está diseñado para discutir los diferentes métodos acerca de las habilidades de enseñanza emergente de literatura, incluyendo la escritura durante los años en preescolar, así como las diferencias entre conocimiento fonológico y habilidades fónicas.

CHILD SCREENINGS

Triple Ds to Succeed with Data Driven Differentiation

Assess, Assess, Assess... But what's next? If you've ever wondered how to leverage the data you gather on your students throughout the year, you're not alone. We're excited to introduce a new training program designed to empower educators! Learn to transform your assessment data into effective, differentiated instruction that creates personalized learning experiences for every student. Join us to unlock the potential of your data and enhance your teaching strategies!

Developmental Delays & Autism Spectrum Disorders

You are the key to understanding children's developmental needs - especially for those children with unique developmental variations. Your observations, assessments and documentation will connect children to the services they need and help ensure you are utilizing appropriate teaching strategies within the classroom.

Capacitación de la Florida sobre los ASQ-3 y ASQSE-2 Parte 1 y 2

Esta capacitación lo equipará con habilidades para administrar e interpretar de manera efectiva los Cuestionarios de Edades y Etapas (ASQ-3 y ASQ:SE-2), centrándose en la identificación de preocupaciones y el análisis de resultados. Aprenderá sobre los requisitos de evaluación de Florida para el Programa de Preparación Escolar, el proceso de intervención y cómo comunicarse positivamente con los padres. Además, obtenga herramientas para educar a los padres sobre los hitos del desarrollo y apoyar el crecimiento de sus hijos.

ASQ®-3 & ASQ®:SE-2 English

The purpose of this training is to equip professionals working with young children and families with the knowledge and skills necessary to effectively administer and interpret the Ages & Stages Questionnaires, Third Edition (ASQ-3) and Ages & Stages Questionnaires: Social-Emotional, Second Edition (ASQ:SE-2). The training will provide an overview of the Florida's screening requirements for the School Readiness Program along with the intervention process which include referral to assigned agencies and community resources. It will emphasize the importance of positive communication with parents when addressing and discussing screening results. The training will promote communication between parent/teacher relationships. Lastly participants will receive tools and strategies to educate parents about development age-appropriate milestones and how to support the child in the process.

CHILD ASSESSMENTS

Introduction to Teaching Strategies Gold

Teaching Strategies Gold is an authentic, ongoing, observation-based assessment system that helps teachers and administrators focus on what matters most for children's success. This training will explore the basic gold platform which allows documentation to be added and used to track a child's educational progress.

CHILD DEVELOPMENT RESEARCH AND BEST PRACTICES

The Language of CLASS: Promoting Instructional Support in the Preschool Classroom

This session is packed with essential resources and powerful strategies that align with the Florida Early Learning and Developmental Standards (FELDS). Dive into dynamic teacher-child interactions and discover innovative ways to elevate your instructional support practices. Don't miss out on this opportunity to transform your approach to education!

DEVELOPMENTALLY APPROPRIATE CURRICULUM AND CHARACTER DEVELOPMENT

Preschool Planning & Curriculum

To have a successful preschool, it is important for teachers to plan a curriculum that takes into consideration a personal teaching philosophy, student interests, and developmental needs of each aged child. Planning allows teachers to be intentional with what and how they teach children as well as creating a warm and welcoming atmosphere that is prepared and takes each individual's needs into account.

TEACHER-CHILD INTERACTIONS

JumpStart Your CLASS SRPA – Spanish

Esta serie de 4 sesiones de comunidad de práctica cubrirá la herramienta de observaciones de clases para bebés, niños pequeños y preescolar. Los participantes revisarán datos de observaciones anteriores y se les proporcionarán estrategias para una observación exitosa. Las sesiones cubrirán las siguientes dimensiones: retroalimentación positiva y negativa, sensibilidad del maestro, respeto por las perspectivas del niño/estudiante, clima relacional, orientación/gestión del comportamiento, exploración/facilitada/facilitación del aprendizaje y desarrollo/formatos de aprendizaje de instrucción, productividad, calidad de la retroalimentación, y modelado del lenguaje/apoyo temprano del lenguaje y desarrollo de conceptos.

JumpStart Your CLASS SRPA - English

This series of 4 Community of Practice sessions will cover the Infant-Toddler and Pre-k Class observations tool. Participants will review data from previous observations and will be provided with strategies for successful observation. The sessions will cover the following dimensions: Positive and Negative Feedback, Teacher Sensitivity, Regard for Child/Student Perspectives, Relational Climate, Behavior Guidance/ Management, Facilitated Exploration/ Facilitation of Learning and Development/ Instructional Learning Formats, Productivity, Quality of feedback, and Language Modeling/ Early Language Support, & Concept Development.

CLASS Group Coaching (MMCI) Infant and Toddler En Espanol

Making the Most of CLASSroom Interactions (MMCI) ayuda a los profesionales de la primera infancia a involucrarse con el Sistema de puntuación de evaluación en el aula (CLASS) a medida que identifican y comprenden las interacciones que aumentan el aprendizaje y el desarrollo de los niños.

Los participantes aprenderán a usar la herramienta de observación CLASS para considerar las prácticas de enseñanza y las observaciones de los videos del aula y las interacciones de la vida real.

CLASS Group Coaching (MMCI) PRE-K

CLASS Group Coaching (MMCI) helps early childhood professionals engage with the Classroom Assessment Scoring System (CLASS) in order to identify and understand the high- quality interactions which increase children's learning and development. Through in-depth study of the CLASS Tool, observation and discussion of exemplary videos, and self-reflection exercises, participants will have opportunities to deepen their knowledge, examine, strengthen and apply CLASS concepts in their work with children.

HEALTH AND SAFETY

FSU 10 Components of Quality Care for Infants and Toddlers - Component 1: Safe & Healthy Program Practices

This training will look at the context of close relationships, social-emotional development, and best program practices for health and safety, and the effect these practices have on quality care.

FSU 10 Componentes de la atención de calidad para bebés y niños pequeños - Componente 1: Prácticas seguras y saludables del programa

Este entrenamiento analizará el contexto de las relaciones cercanas, el desarrollo socioemocional y las mejores prácticas del programa para la salud y la seguridad, y el efecto que estas prácticas tienen en la atención de calidad.

Essentials for Embedding Social Development Skills & Emotional Competencies

In partnership with Technical Assistance & Training Systems (TATS). Using resources provided by the Florida Standards, TATS and National Center for Pyramid Model Innovations (NCPMI), Join us for an exciting session where you'll uncover powerful strategies and essential resources to boost social development and emotional competencies in preschool children.

HOT DOCS Parent Training Program

The HOT DOCS program offers parents and caregivers a problem-solving approach to understanding and solving children's everyday behavioral challenges. This program emphasizes prevention strategies and supports promoting positive behavior.

Facilitation of Social Skills & Behaviors

In partnership with Technical Assistance & Training Systems (TATS). Using resources provided by the Florida Standards, TATS and National Center for Pyramid Model Innovations (NCPMI), Join us for an engaging presentation where we will explore the essential aspects of children's basic needs and how they influence behaviors. Together, we'll discover effective strategies for teaching social expectations and share inspiring methods to create a nurturing environment.

FSU 10 Components of Quality Care for Infants and Toddlers - Component 4: Small Groups with Optimal Ratios AND Component 5: Primary Caregiving & Continuity of Care - Component: 4

To allow teachers and young children the opportunity to develop close and caring relationships with children, Component 4 addresses: Optimal ratios and workable group sizes. Component:5 - To promote ongoing, meaningful relationships that extend over time between teachers, children, and families Component 5 includes the Assignment of Primary Caregivers and Continuity of Care.

FSU 10 Components of Quality Care for Infants and Toddlers - Componente 4: Grupos pequeños con proporciones óptimas Y Componente 5: Atención primaria y continuidad de la atención - componente: 4

Para permitir que los maestros y los niños pequeños tengan la oportunidad de desarrollar relaciones cercanas y afectuosas con los niños, el Componente 4 aborda: Proporciones óptimas y tamaños de grupos viables. Componente: 5- Promover relaciones continuas y significativas que se extiendan en el tiempo entre maestros, niños y familias. El Componente 5 incluye la Asignación de cuidadores primarios y la Continuidad de la atención.

PBS Kids Learn and Grow Together: Responsibility

In this training, you'll help the children in your care develop their social and emotional skills and habits and provide resources for parents and guardians to support their children's continued development at home. This session focuses on Responsibility: I take care of myself, my things and my community. The trainer will engage participants using PBS Kids media and printables to help children with this specific SEL skill of Responsibility.

Los niños de PBS aprenden y crecen juntos: Responsabilidad

En este curso, ayudará a los niños bajo su cuidado a desarrollar sus habilidades y hábitos sociales y emocionales y brindará recursos para que los

padres y tutores apoyen el desarrollo continuo de sus hijos en el hogar. Esta sesión se centra en la responsabilidad. El capacitador involucrará a los participantes utilizando medios e imprimibles para niños de PBS para ayudar a los niños con esta habilidad específica de SEL (aprendizaje social emocional) de responsabilidad.

PBS Kids Learn and Grow Together: Self-Regulation and Impulse Control

In this training, you'll help the children in your care develop their social and emotional skills and habits and provide resources for parents and guardians to support their children's continued development at home. This session focuses on Self-Regulation and Impulse Control. The trainer will engage participants using PBS Kids media and printables to help children with this specific SEL skill of Self-Regulation and Impulse Control.

Los niños de PBS aprenden y crecen juntos: Autorregulación y control de impulsos

En este curso, ayudará a los niños bajo su cuidado a desarrollar sus habilidades y hábitos sociales y emocionales y brindará recursos para que los padres y tutores apoyen el desarrollo continuo de sus hijos en el hogar. Esta sesión se centra en la autorregulación y control de impulsos. El capacitador involucrará a los participantes utilizando medios e imprimibles para niños de PBS para ayudar a los niños con esta habilidad específica de SEL (aprendizaje social emocional) de autorregulación y control de impulso.

PBS KIDS Learn and Grow Together: Self-Confidence

In this training, you'll help the children in your care develop their social and emotional skills and habits and provide resources for parents and guardians to support their children's continued development at home. This session focuses on Self-Confidence: I am good, and I am capable. The trainer will engage participants using PBS Kids media and printables to help children with this specific SEL skill of Self-Confidence.

PBS KIDS Learn and Grow Together: Perseverance English

In partnership with WEDU PBS Kids, join us for an exciting session of the Learn and Grow Together series! This training empowers providers with innovative strategies to nurture children's social and emotional skills, focusing specifically on building the essential skill of perseverance. Let's inspire resilience together!

PBS KIDS Learn and Grow Together: Perseverance Spanish

In partnership with WEDU PBS Kids, join us for an

exciting session of the Learn and Grow Together series! This training empowers providers with innovative strategies to nurture children's social and emotional skills, focusing specifically on building the essential skill of perseverance. Let's inspire resilience together!

PBS KIDS Learn and Grow Together: Courage English -

Get ready to embark on an empowering journey with our Learn and Grow Together series! This training session is all about equipping providers with essential strategies to nurture children's social and emotional skills, focusing specifically on cultivating the incredible skill of courage. Join us and help little ones bravely face the world!

PBS KIDS Learn and Grow Together: Courage Spanish

Get ready to embark on an empowering journey with our Learn and Grow Together series! This training session is all about equipping providers with essential strategies to nurture children's social and emotional skills, focusing specifically on cultivating the incredible skill of courage. Join us and help little ones bravely face the world!

PBS KIDS Learn and Grow Together Gratitude English

Training is part of the PBS KIDS Learn and Grow Together: Gratitude Spanish series that teaches providers strategies to help children develop social and emotional skills: specifically, the skill of Gratitude.

PBS KIDS Learn and Grow Together Gratitude Spanish

Training is part of the PBS KIDS Learn and Grow Together: Gratitude Spanish series that teaches providers strategies to help children develop social and emotional skills: specifically, the skill of Gratitude.

Los niños de PBS aprenden y crecen juntos: Auto Confianza

En este curso, ayudará a los niños bajo su cuidado a desarrollar sus habilidades y hábitos sociales y emocionales y brindará recursos para que los padres y tutores apoyen el desarrollo continuo de sus hijos en el hogar. Esta sesión se centra en la auto confianza. El capacitador involucrará a los participantes utilizando medios e imprimibles para niños de PBS para ayudar a los niños con esta habilidad específica de SEL (aprendizaje social emocional) de auto confianza.

PBS KIDS Learn and Grow Together: Empathy and Compassion

In this training, you'll help the children in your care develop their social and emotional skills and habits and provide resources for parents and guardians to support their children's continued development at home. This session focuses on Empathy and Compassion. The trainer will engage participants using PBS KIDS media and printables to help children with this specific SEL skill of Empathy and Compassion.

Los niños de PBS aprenden y crecen juntos: Amistad

En este programa, ayudará a los niños bajo su cuidado a desarrollar sus habilidades y hábitos sociales y emocionales y brindará recursos para que los padres y tutores apoyen el desarrollo continuo de sus hijos en el hogar. Esta sesión se centra en la amistad. El capacitador involucrará a los participantes utilizando medios e imprimibles para niños de PBS para ayudar a los niños con esta habilidad específica de SEL (aprendizaje social emocional) de amistad.

Adapt and Transform Behavior - Crisis Management English

Training and on-site coaching for up to early childcare teachers/providers in non-physical crisis management strategies focusing on prevention and de-escalation. The goals of these training sessions will be to teach safe prevention and de-escalation of challenging behavior for young children and teach early childcare providers how to increase positive relationships between teachers and students, strengthen positive student behaviors and decrease dangerous/maladaptive behaviors in the classroom setting. Included with this training workshop package is follow-up coaching and consultation with ATBx expert trainers. ATBx provided coaching is in-the-moment teaching that happens in the environment where the trained skills need to occur. Coaching sessions with ATBx expert trainers will be conducted in person (preferred) and virtually (as needed) to allow for maximum flexibility in scheduling..

Adapt and Transform Behavior - Crisis Management Spanish

Planeará capacitar y proporcionar entrenamiento en el lugar para maestros/proveedores de cuidado infantil temprano en estrategias de manejo de crisis no físicas que se centren en la prevención y la desescalada. Los objetivos de estas sesiones de capacitación serán enseñar la prevención segura y la reducción de la intensidad de las conductas desafiantes para los niños pequeños y enseñar a los proveedores de cuidado infantil temprano cómo aumentar las

relaciones positivas entre maestros y estudiantes, fortalecer las conductas positivas de los estudiantes y disminuir las conductas peligrosas/desadaptativas en el aula. Con este paquete de talleres de capacitación se incluye el entrenamiento de seguimiento y la consulta con entrenadores expertos de ATBx. El coaching proporcionado por ATBx es la enseñanza en el momento que ocurre en el entorno donde deben ocurrir las habilidades entrenadas. Las sesiones de entrenamiento con entrenadores expertos de ATBx se llevarán a cabo en persona (preferiblemente) y virtualmente (según sea necesario) para permitir la máxima flexibilidad en la programación.

STEM

iSpy Stinger Storm Expansion

In partnership with a Suncoast Schools Federal Credit Union grant, take coding and robotics to the next level for preschoolers. The iSpy Stinger Storm Expansion project will integrate innovative tools like Bee Bot Robots into their curriculum, by not only expanding educational opportunities but also supporting children's emotional well-being by encouraging collaborative learning. These activities build confidence and resilience, essential elements of emotional health.

Seeds in the City English

This training consists of experiential learning through hands-on demonstrations and engagement in the material delivered to ECE providers on incorporating nature into the classroom environment. The development of the training is based on Cambourne's Conditions of Learning Theory, which states immersion, demonstration, and engagement are necessary to promote learners to develop a more meaningful understanding by collaborating to construct meaning and knowledge.

Seeds in the City English

This training consists of experiential learning through hands-on demonstrations and engagement in the material delivered to ECE providers on incorporating nature into the classroom environment. The development of the training is based on Cambourne's Conditions of Learning Theory, which states immersion, demonstration, and engagement are necessary to promote learners to develop a more meaningful understanding by collaborating to construct meaning and knowledge.

Marvelous Magnets

Embark on an enchanting journey of discovery with our "Marvelous Magnetic" magnet training! Designed

specifically for curious minds aged 3 to 5, this hands-on experience promises a world of wonder and exploration through the captivating realm of magnets. This magnet training for preschoolers is filled with interactive and age-appropriate activities that make learning about magnets a joyous adventure. Each activity is carefully crafted to capture the imagination of young learners.

Building Future Engineers through STEM

This training is specifically designed to incorporate all Dimensions of the PRE-K CLASS Observation and educate learners on how to solve design challenges with young children. Practitioners will have the opportunity to make and tinker while learning how to conduct design challenges which include Math and Literacy using NAEYC's Making & Tinkering with STEM.

LANGUAGE AND LITERACY

Little Learners, Big Words: Teaching Vocabulary Ages 0-5

Unlock the magic of words with "Little Learners, Big Words." This course dives deep into the world of early language development and in it you'll discover essential vocabulary-building strategies, how to create language-rich classrooms, vocabulary development, as well as touch on best practice research and theories. Learn practical, fun, and effective techniques to enrich your students' vocabulary, ensuring every word counts. Transform your classroom into a vibrant, interactive learning environment where young minds can flourish and words come to life. Explore key stages of language development, influential factors, and the crucial role vocabulary plays in a child's overall growth. Gain insights from the latest research findings and foundational theories, including Vygotsky's Social Development Theory and Hart and Risley's pivotal study on language exposure. By the end of this course, you'll be equipped with the knowledge and tools to make a significant impact on your students' language skills, fostering their growth and confidence!

The Importance of Literacy in Children

There is a crisis happening across the globe and it's happening right under our noses! Research has shown that children's literacy abilities are dropping, and what better way to help than right now with you?

Engaging All Students During Story Time

Using resources provided by the Florida Standards, TATS and National Center for Pyramid Model Innovations (NCPMI), join us as we explore exciting strategies before and during story time that will

captivate your child's interest! We'll also share wonderful ways to extend ideas and concepts, making understanding even richer and more enjoyable. This course is offered in partnership with Technical Assistance & Training Systems (TATS).

English as a Second Language (ESOL) Cohort A

In partnership with ReDefiners World Languages, join us in a 12-week engaging and comprehensive language program for Basic Living, thoughtfully designed to support your development of linguistic competence in English. Each session, you'll practice authentic English language skills that are essential for interacting in the real world. You'll build confidence in speaking English while gaining a deeper understanding of customs, practices, and values in a safe context through the use of culturally immersive materials.

English as a Second Language (ESOL) Cohort B

In partnership with ReDefiners World Languages, join us in a 12-week engaging and comprehensive language program for Basic Living, thoughtfully designed to support your development of linguistic competence in English. Each session, you'll practice authentic English language skills that are essential for interacting in the real world. You'll build confidence in speaking English while gaining a deeper understanding of customs, practices, and values in a safe context through the use of culturally immersive materials.

LEADERSHIP & BUSINESS ADMINISTRATION

FSU 10 Components of Quality Care for Infants and Toddlers - Component 2 : Staff Well Trained

Teachers who competently care for children will have the capacity to develop warm and positive relationships with children, families, and staff. Component 2 addresses program systems, practices, and requirements for a well-trained staff.

FSU 10 Componentes de la atención de calidad para bebés y niños pequeños - Componente 2: Personal bien capacitado

Los maestros que cuidan a los niños de manera competente tendrán la capacidad de desarrollar relaciones cálidas y positivas con los niños, las familias y el personal. El componente 2 aborda los sistemas, prácticas y requisitos del programa para un personal bien capacitado.

TECHNICAL ASSISTANCE AND COACHING

Coaches completed 1,046.19 hours of coaching and 104.43 hours of technical assistance in the following training and initiatives

Jump Start Your CLASS

A series of virtual and/or in person training that promoted high quality teacher child interactions and focused on using the University of Florida's Lastinger Center's Model for Coaching to support teachers in their classroom environments to improve depth durations and frequency of interactions.

Hillsborough Infant & Toddler Initiative (HITI):

Through the HITI program, teachers work with their assigned coaches to choose which of the 10 Components they want to focus on. Using pre-component observation as a guide for coaching conversations with each educator to set goals to increase scores for post observation.

MMCI CLASS Group Coaching: A 12-session series, designed to support teachers in their environments to improve depth, duration, and frequency of interactions. Additional resources and materials were provided when available.

Literacy All Year: On-site coaching and technical assistance centered on emergent literacy strategies were provided to teachers of three and four-year olds in participating programs. Teachers were also provided coaching on implementation of resources and materials provided through their attended learning events.

FSU 10 Components: Centers with infants and toddlers were invited to join in training and coaching for directors and teachers. Directors and teachers chose one of the components and coaches used a pre-component observation as a guide for coaching to increase scores when the post observation is completed at the end of the first year of this two-year initiative. Materials were provided to support areas that scored low on the CLASS tool.

QUALITY ACTIVITIES FOR INFANT AND TODDLER CARE

THE HILLSBOROUGH INFANT & TODDLER INITIATIVE (HITI)

The Hillsborough Infant & Toddler Initiative (HITI) began the 2024–2025 school year with the Orientation Meeting for newly recruited early childhood programs on August 28, 2024. The goals of the Initiative are to increase families' access to infant/toddler care in their local community and to improve the quality of care for children under 36 months.

The initiative targeted childcare programs in high-needs zip codes, where increased numbers of childcare providers were no longer serving children birth to 2, newly contracted School Readiness providers (contracted after June 30, 2023), and childcare programs with 30% or more School Readiness enrollment.

The eligible programs chosen to participate in HITI agreed to increase their birth to 2-year-old enrollment by implementing strategies to inform parents about slots available in their program and/or open new spaces for one or more of the targeted age groups; improve the care they provided through staff professional development; facilitate family engagement activities to bridge the gap between preschool and home; and offer supportive and nurturing teacher/child interactions in safe and age-appropriate learning environments. These goals were supported by the ELCHC by providing coaching, technical assistance, safe and appropriate furnishings, equipment and materials for classrooms, and professional development and coaching stipends for administrative and infant/toddler teaching staff to encourage staff retention in the childcare programs and maintain quality.

Each year, new programs are recruited for HITI, and childcare programs that participated in previous years can agree to continue their participation on a limited basis. During the 2024–2025 initiative year, 8 childcare programs joined HITI (2 Family Childcare Homes (FCCH) and 6 center-based programs). Two programs (1 FCCH and 1 center-based) terminated their participation during the school year due to program or owner issues, and 22 previous HITI programs agreed to continue their participation, for a total of 28 childcare programs.

During the year, 5 infant/toddler classrooms were newly opened, and 10 environments were enhanced with safe, age-appropriate materials, furnishings, and equipment. A total of 101 infants and toddlers were enrolled in the 6 participating programs from August 2024 through June 2025. Teachers and directors completed 418 hours toward professional development stipends, totaling \$8,950, and \$900 was issued for coaching stipends, for a total of \$9,850 in monetary incentives for teachers and administrative staff during the year.

The Hillsborough Infant & Toddler Initiative sponsored family engagement activities in childcare programs that voluntarily agreed to conduct them. The family engagement activities included: Putting It All Together – The Importance of Puzzle Play for Infants & Toddlers, Paint & Pastries, and Game Time with Dad. The parents who participated in these and other activities sponsored by their childcare provider were eligible for incentives to take home for their infant and/or toddler. Incentives for children and families included sets of puzzles, books and bins from the Preschool to Home Library for Infants and Toddlers, Kaplan infant & toddler learning kits, travel mugs, picture frames, and canvas bags.



The ELCHC launched the 10 Components Project on July 1, 2023, to support program quality improvement efforts for infants and toddlers using the FSU 10 Components of Quality Care for Infants and Toddlers. The second year of the project was underway on July 1, 2024. The 4 programs joining the project for the first year continued for the remainder of the project, which ended June 30, 2025. The ELCHC recruited 4 early childhood programs with School Readiness Program Assessment (SRPA) scores between 4.0 and 4.5 to participate in the project. The Implementation Team members were trained in both the assessment tool and the training modules to implement the project. During Year 2, coaching was provided to teachers and directors throughout the year, but training was terminated after the Fall 2024 course offerings due to low attendance in courses for English-speaking learners. The pre-assessment average yielded a score of 64% for all classrooms and administrators. The post-assessment results yielded an average of 84.48%, for a yearly increase of 20.48%. There were a total of 28 participants in the project at the end of Year 2, across 16 classrooms.

The Preschool to Home Library for Infants and Toddlers (PHLIT) was implemented for its third year in HITI and 10 Components Project sites during 2024–2025. The project sought to support infant/toddler literacy and bridge the gap between preschools and homes by offering book bins and books to families and children who participated in family engagement activities in their child’s preschool. During the year, infant and toddler books were issued to preschool programs across the county by ELCHC staff. The book distribution was too widespread to track the total number of books and sets distributed to early childhood providers. HITI also incentivized parents by issuing a total of 85 book bins with 4 books each (340 books) to families attending family engagement activities. In 2024–2025, the Preschool to Home Library for Infants & Toddlers also issued 196 learning kits to parents of infants and toddlers to use with their children at home. The kits supported language, social-emotional, cognitive, and fine motor development.

QUALITY ACTIVITIES FOR CHILDREN AGES 3-5

ISPY TAMPA BAY

The iSpy Tampa Bay initiative continues to inspire curiosity and build foundational STEM skills for preschoolers and their educators throughout Hillsborough County. In 2024-2025, the program expanded its reach and impact, providing more opportunities for children, families, and teachers to explore the world of science, technology, engineering, and math through hands-on learning and community partnerships.



PROGRAM REACH & PARTICIPATION

- 31 programs-participated in the 2024–2025 program year.
- 530 children were directly served through engaging STEM learning opportunities.
- 83 educators actively participated in training, classroom implementation, and enrichment activities.
- 25 programs returned, showing sustained engagement and continued value from their iSpy experiences.

PROFESSIONAL DEVELOPMENT & TRAINING

- iSpy Tampa Bay provided educators with high-quality professional development, specifically designed to build confidence in teaching STEM concepts in early learning environments:
- Over 355 hours of professional development were completed by participating educators.

- Training focused on STEM-specific topics, including science exploration, coding, robotics, and classroom integration. Training offered by our community partners such as Zoo Tampa-Seeds in the City and the Florida Fish and Wildlife Conservation-Growing Up Wild
- Educators also received access to Communities of Practice, where they collaborated with peers, shared ideas, and strengthened their teaching approaches.

CLASSROOM ENHANCEMENTS & SUPPORT

- To ensure that STEM learning translated into rich classroom experiences:
- Over \$29,000 in classroom materials were distributed to educators, including loose parts, science exploration tools, books, and robotics resources.
- \$37,875 in stipends were awarded to educators who successfully participated, supporting both professional growth and classroom implementation.
- Annual attraction passes continued to provide hands-on opportunities for children and their families at Zoo Tampa, MOSI, Glazer Children’s Museum, and the Florida Aquarium.

STINGER STORM EXPANSION

- A major highlight of this year was the Stinger Storm expansion, which introduced a new robotics and coding component designed to make STEM learning fun, interactive, and accessible for preschoolers.
- Participating classrooms received Bee-Bot robots and accessories, along with supplemental materials and teacher guides to support lesson planning.
- Teachers engaged in specialized training sessions to gain confidence in coding and robotics instruction.
- Classrooms developed creative exploration stations, allowing preschoolers to learn basic coding, problem-solving, and teamwork through playful, hands-on experiences.
- The expansion fostered early exposure to robotics while supporting the program’s mission of preparing young learners with the critical thinking skills needed for future success.

OUTCOMES & IMPACT

- iSpy Tampa Bay’s achievements highlight the program’s continued growth and importance:
- 530 children gained exposure to innovative STEM learning experiences.
- 83 educators enhanced their teaching practices through training, collaboration, and classroom implementation.
- 25 programs returned, reinforcing iSpy’s long-term impact on early learning communities.
- Educators and families reported increased enthusiasm for STEM learning, particularly through the addition of robotics and coding opportunities.
- The iSpy Tampa Bay Stinger Storm Challenge successfully supported early STEM development, with 81% of the 74 participating children demonstrating measurable gains. A total of 60 children showed increased proficiency in problem-solving, sequencing, and vocabulary.

LOOKING AHEAD

- The 2024–2025 iSpy Tampa Bay program demonstrates the power of partnerships, innovation, and investment in early learning. With the successful launch of Stinger Storm and the ongoing commitment of educators, the initiative continues to expand possibilities for children to explore, create, and discover through STEM. The ELCHC looks forward to building upon this success and reaching even more children and educators in the coming year.

ON MY WAY TO KINDERGARTEN (OMW2K)

The OMW2K program is composed of two components, the anchor project called 5 for 5 Challenge and is a spin-off for Literacy all Year. The 5 for 5 program is designed to provide quick 5-minute activities in the 5 learning domains to families to continue bridging learning at home. The Literacy all Year program aims to create home libraries for children and is designed to equip early education teachers with literacy materials and training to help close the literacy gap and better prepare children for kindergarten entry while also forming community partnerships with their neighboring elementary schools through a Zoom/Pen Pal program.

A total of two community 5 for 5 events were hosted for families and providers, both of which are held in partnership with Day of Play events. The events provided books for children as well as hands-on activities to support learning at home in five learning domains: Physical Development-Literacy-STEM-Social Studies and Social Emotional. Children and families were able to take these activities and books home as well as connect with many community vendors.

In 2024-2025, there was an increase in the number of providers participating in Literacy All Year: 8 programs with 10 four-year-old classrooms and 10 three year-old classrooms were onboarded, and 11 programs with 15 classrooms returned. New classrooms received Big Book stands, a set of 10 Big Books, a fully stocked listening center with hardware as well as lesson plans to accompany each big book. Additionally, the children in the four-Year-old rooms received a full home library of the same titles from the big books provided to the teachers as well as take home games to continue hands on practice of literacy skills at home. Over 100 children received home libraries and a technology package which included a tablet with 10-month subscription for Age of Learning.

SUMMER BOOST

Summer Boost was designed as an extension of the Literacy All Year program to support early learning providers in preventing summer learning loss for rising kindergarten students. This year, the ELCHC was fortunate to receive funding from the Children's Board of Hillsborough County to continue this Kindergarten Readiness Initiative.

The focus was on providers whose overall FAST Early Literacy Average Progress Monitoring 3 score was below The state's readiness benchmark of 707. Programs were invited to participate in a six-week extension camp from June 16 to July 25, 2025. Each program was provided with a summer curriculum and training to support literacy and math. Teachers and assistants were also awarded a \$4,500 stipend.

The program served over 400 children and 64 educators. Participating families and teachers received a five-month Family ZooTampa pass. The ZooTampa pass will have a lasting impact on children's learning by offering real-life experiences they can transfer to academic skills from STEAM concepts to reading comprehension.

JUMPSTART YOUR CLASS

This series of 4 Community of Practice sessions will cover the Infant- Toddler and Pre-k Class observations tool. Participants will review data from previous observations and will be provided with strategies for successful observation. The sessions will cover the following dimensions: Positive and Negative Feedback, Teacher Sensitivity, Regard for Child/ Student Perspectives, Relational Climate, Behavior Guidance/ Management, Facilitated Exploration/ Facilitation of Learning and Development/ Instructional Learning Formats, Productivity, Quality of feedback, and Language Modeling/ Early Language Support, & Concept Development.

JumpStart Your CLASS

- English- 50 attended, 28 completed.
- Spanish- 53 attended, 25 completed.

CHILD ASSESSMENT

Child Assessment has three benchmarks per year where reports are supplied to then compare to eligible school readiness children within the county. Participants volunteer to participate in the initiative and have several requirements to meet. They need to be in good standing with the ELCHC, ensure all teachers are reliable in Smart Teach (Teaching Strategies) which require coursework and a test, purchase enough subscriptions though Smart Teach for their school readiness children, and meet three benchmarks a year. Last year for those meeting the requirements, they received a small stipend. Every year new participants may receive an iPad to assist them in documenting the children in their program. Last year, the number of participants attended the benchmarks and the number of students they assessed are as follows:

Benchmark one 10/31/24: 55 programs participated with 217 teachers conducting the assessments and 603 children were assessed.

Benchmark two 1/31/25: 55 programs participated with 217 teachers conducting the assessments and 644 children were assessed.

Benchmark three 6/11/25: 54 programs participated with 213 teachers conducting the assessments and 707 children were assessed.

Technical Assistance (TA) was provided via phone calls, emails and in person visits for approximately 50 hours.

VOLUNTARY PREKINDERGARTEN (VPK) COACHING COHORTS

In 2024–2025, ELCHC continued the VPK Coaching Cohorts, in partnership with Procure Solutions, building on the pilot launched in 2023–2024. The program consisted of six coaching cohorts, each with 20 available spots. Over the course of eight weeks, participants engaged in live sessions with a professional development coach and completed self-paced courses centered on the concepts in Renaissance FAST Star Early Literacy.

The coaching cohorts targeted VPK providers where at least 25% of students were identified as falling into the Urgent Intervention Benchmark on the 2024–2025 Star Early Literacy Progress Monitoring 1 Assessment. Through this model, teachers and directors received training in foundational literacy practices, strategies for integrating literacy into lesson plans, and methods for leveraging classroom data to make informed, data-driven decisions.

This initiative reached 22 VPK programs, engaged 45 early learning professionals, and served 886 preschool students across the community. The impact was significant: the percentage of students needing Urgent Intervention dropped from 6.9% to less than 1%: an 86.4% reduction. By PM3, an average of 90% of students across the twenty-two programs scored in the At/Above Benchmark on their Star Early Literacy Assessment. These results demonstrate not only powerful growth for children but also the lasting effect of equipping educators with the right tools and strategies.

The continued progress demonstrated through this initiative highlights the power of tailored literacy professional development in transforming early learning experiences. By empowering educators with instructional strategies and data-informed practices, the initiative will be directly improving literacy outcomes for the youngest learners in the community by offering a new coaching series to better align with the evolving needs of Hillsborough County VPK providers.

22 programs, 45 participants and 886 students served.

QUALITY INITIATIVES ENHANCING WORKFORCE AND LEADERSHIP

MASTER CLASS AND ACCREDITATION ACADEMY

During the 2024–2025 fiscal year, the ELCHC welcomed its second cohort, consisting of six family child care homes (FCCHs) and six centers. Master Class sessions were held at the Coalition on four Saturdays from 8:30 a.m. to 3:00 p.m., from February through May, with virtual support sessions offered in between. Eleven providers successfully completed the Master Class. One center withdrew due to personnel changes.

In July, five centers and six FCCHs began participation in the Accreditation Academy. For the first time, a local mentor also completed the Master Class coursework to provide mentorship within the community. Recruitment for Cohort 3 is currently underway, with a planned start date of January 2026. Cohort 1 is in the process of receiving accreditation verification visits and is expected to achieve accreditation by October 2025.

DIRECTOR'S COMMUNITY OF PRACTICE (COP)

Meetings were held during nine of the twelve months, with breaks in July, August, and December. Sessions took place at six different sites across the county, as well as three times at the Coalition. A total of 51 different providers attended, with an average of 16 participants per session.

One particularly meaningful session occurred on October 23rd at Mary Go Round – South Pointe, shortly after a devastating hurricane impacted the area. Although the meeting was considered for cancellation, providers expressed a desire to proceed so they could come together and support one another. That gathering demonstrated that the group's primary goal—building a sense of community—had been achieved. There are numerous examples of providers reaching out to peers they connected with through this group for recommendations, assistance, and, most importantly, support.

METRO CARE CORPS

ELCHC again partnered with Metropolitan Ministries Care Corps Early Education Internship Initiative. Four MMCI courses to 36 individuals were provided, six computers were raffled and \$3,300 in achievement bonuses to Early Childhood interns (11 interns at \$300 each) were disbursed.

UNITED WAY QUALITY COUNTS INITIATIVE

The partnership with United Way to provide professional development for providers in targeted Asset Limited, Income Constrained, Employed (ALICE) zip codes (33604, 33610, 33619, and 33598) continued this fiscal year. Twelve providers participated, selecting from a curated Professional Development Menu that offered continuing education options ranging from GED preparation to college coursework, as well as stipends for attending conferences and communities of practice.

A total of 27 individuals completed 1,016 training hours, resulting in six new credentials earned. This year marked the final year of participation for seven of the original eight providers, all of whom spent more than three years in the program. Each of these providers exceeded the goal of improving program quality and increasing their CLASS scores.

Recruitment is currently underway for new sites to join the initiative.

MONITORING PROVIDER SUPPORTS



The ELCHC Provider Support Team conducted on-site monitoring of contracted School Readiness and Voluntary Pre-Kindergarten (VPK) programs to ensure contract compliance. Consequences for noncompliance were determined according to the State of Florida Rule and law and the ELCHC's Progressive Enforcement Procedures.

Staff monitored each provider's program to ensure it met the terms and conditions outlined in the State of Florida Statewide School Readiness Contract (DEL SR-20). The ELCHC monitored both private providers and Hillsborough County Public Schools (HCPS).

As part of ELCHC's ongoing commitment to support providers, the Provider Support Team conducted Technical Assistance (TA) visits throughout the fiscal year. These visits foster collaboration, ensure providers stay informed on current policies and requirements. These visits provide an opportunity for ELCHC staff to deliver constructive feedback that can support providers in preparing for future monitoring and health safety visits.

In FY 2024–2025, over 50% of Hillsborough contracted providers received at least one visit from the Provider Support Team.



INCLUSION

Early Intervention Support Services (EISS) provides essential services to children in School Readiness. Each year, all children from birth through kindergarten entry are screened for developmental milestones and concerns using the Ages and Stages Questionnaire (ASQ-3) and the Ages and Stages Questionnaire: Social-Emotional (ASQ-SE). Parents may choose to decline participation in the ASQ-SE. The results are reported to EISS for follow-up, which may include intervention support plans, additional developmental and behavioral screenings, or referrals for developmental evaluations to Early Steps or Child Find. To address the growing need for social emotional behavioral support, the ELCHC Behavior Support Specialists developed a program aimed at reducing expulsion rates within the early childhood School Readiness community.

This initiative allows Early Intervention Support staff to create intervention plans that focus on the whole child and all areas of development.

SUPPORTING DATA

ASQ-3: **8,389**

ASQ-SE: **5,573**

ADDITIONAL SUPPORTS ISSUED

Children referred to Early Steps: **99**

Children referred to Child Find: **212**

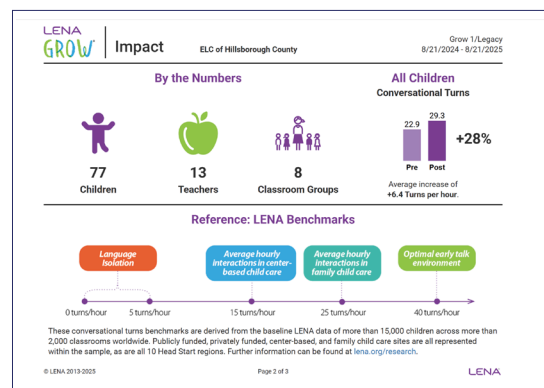
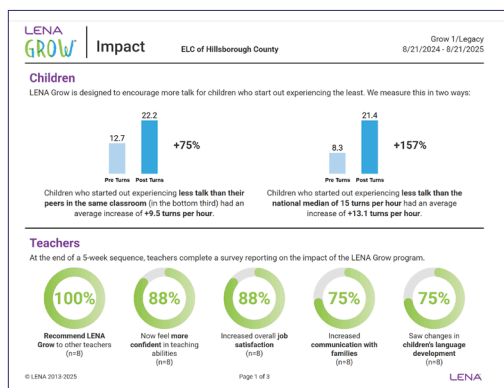
Interagency children received: **33**

WARM LINES SERVICES

The ELCHC offers essential early intervention and support services to families and providers through the Hillsborough County Warm Line. This service is available to all childcare centers, family childcare homes, and parents who need assistance with childcare arrangements or concerns about children with special needs. In 2024-2025, the warm line supported over 55 families and providers, offering guidance and resources to ensure children receive the care and services they need.

INCLUSION PROGRAM EXPANSION

The Inclusion Support Services project successfully supported 15 early childhood classrooms across two cohorts during the 2024–2025 fiscal year. Each cohort participated in a six-month model that included professional development, on-site coaching, classroom enhancements, and family engagement. All participating teachers completed four core training courses, while coaching visits focused on inclusive classroom environments, teacher collaboration, and developmental screenings. Classrooms were reset with supportive materials, and individualized coaching helped implement inclusive strategies effectively. Staff growth was documented through pre- and post-assessments (BPIECE), showing measurable progress. The project concluded with all goals achieved and inclusive practices firmly established across all sites.



LENA Grow is a research-based professional development program that helps early childhood educators improve the quality and quantity of back-and-forth conversations with young children. Using small wearable devices and personalized coaching, it provides data-driven insights to increase meaningful interactions that support early brain and language development. By closing the “talk gap,” LENA Grow empowers educators to build stronger foundations for children’s long-term academic and social success. In 2024-2025, the LENA Grow program made a strong impact in four child care centers in Hillsborough County from August 2024 to June 2025. A total of 77 children and 13 teachers across 8 classrooms participated. Children showed a 28% overall increase in conversational turns, with those most at risk demonstrating gains of up to 157%. Teachers reported greater confidence, improved communication with families, and increased job satisfaction. All participating teachers indicated they would recommend the program to others.

SPECIAL NEEDS RATE

During the 2024–2025 year, ELCHC’s Early Intervention Support Services team focused on increasing awareness of the Special Needs Rate within the School Readiness program. Providers received training on the purpose of the rate, how it supports children with special needs, and the application process.

The Special Needs Rate provides an additional 20% reimbursement above the Infant Rate to help cover classroom accommodations such as additional staffing, specialized materials, or training. Eligibility includes children with an IFSP, IEP, therapy or evaluation reports, or a documented diagnosis.

As a result of these efforts, the ELCHC processed 346 Special Needs Rate requests. On average, more than 160 Special Needs Rates remained active each month.



DATA SUMMARY

CHILDREN SERVED IN SCHOOL READINESS

Number of children served in the school readiness program, by provider type, enumerated by age and eligibility priority category, reported as the number of children served during the month and the average participation throughout the month.

CHILD DISENROLLMENT

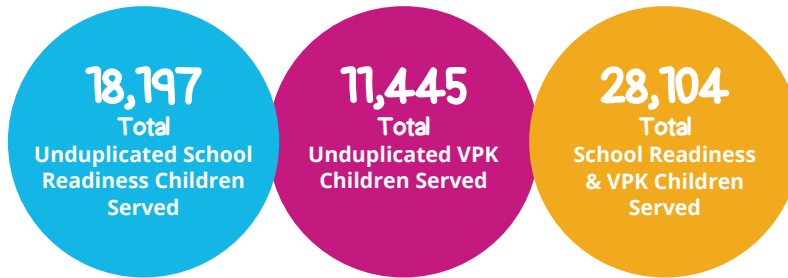
Total number of children disenrolled during the year and the reasons for disenrollment.

PROVIDER TYPE

Total number of providers by provider type.

CHILDREN SERVED BY PROVIDER

The total number of children served in each provider facility.



CHILDREN SERVED IN SCHOOL READINESS PROGRAM

2024							2025						
CATEGORIES	JUL	AUG	SEP	OCT	NOV	DEC	JAN	FEB	MAR	APR	MAY	JUN	MONTHLY AVERAGE
1. Licensed Private Centers	10,098	10,182	10,181	9,905	9,835	9,964	10,171	10,161	10,194	9,813	9,724	8,971	9,933
01 TCA	43	42	48	45	45	55	52	42	45	51	51	43	47
0-2 Years	12	12	15	15	15	18	16	12	10	14	13	10	14
3-5 Years	21	17	16	16	19	21	23	20	23	20	20	18	20
School Age	10	13	17	14	11	16	13	10	12	17	18	15	14
02 At Risk < 9	1,118	1,114	1,111	1,062	1,012	984	1,002	990	1,026	1,023	1,059	1,002	1,042
0-2 Years	464	482	490	460	442	433	435	426	433	429	430	417	445
3-5 Years	471	419	382	389	368	354	376	381	400	401	434	419	400
School Age	183	213	239	213	202	197	191	183	193	193	195	166	197
03 Econ Disadvantage < SCH Age	6,475	6,025	5,791	5,833	5,879	6,007	6,242	6,397	6,378	6,183	6,111	5,664	6,082
0-2 Years	2,613	2,650	2,704	2,622	2,577	2,574	2,631	2,691	2,593	2,449	2,323	2,129	2,546
3-5 Years	3,862	3,375	3,087	3,211	3,302	3,433	3,611	3,706	3,785	3,734	3,788	3,535	3,536
04 TCC < SCH Age	16	14	15	11	10	9	7	7	5	5	5	5	9
0-2 Years	7	8	8	6	5	4	4	3	2	2	2	1	4
3-5 Years	9	6	7	5	5	5	3	4	3	3	3	4	5
05 At Risk Age 9-12	85	71	77	61	61	58	60	61	54	54	37	30	59
School Age	85	71	77	61	61	58	60	61	54	54	37	30	59
06 Econ Disadvantage - SCH Age	2,328	2,827	3,037	2,794	2,734	2,759	2,720	2,580	2,603	2,411	2,379	2,192	2,614
School Age	2,328	2,827	3,037	2,794	2,734	2,759	2,720	2,580	2,603	2,411	2,379	2,192	2,614
07 TCC SCH Age	5	4	12	11	7	6	4	3	3	4	4	6	6
School Age	5	4	12	11	7	6	4	3	3	4	4	6	6
09 Head Start and VPK	0	56	60	59	57	56	54	50	49	51	49	0	45
3-5 Years	0	56	60	58	56	56	54	50	49	51	49	0	45
School Age	0	0	0	1	1	0	0	0	0	0	0	0	0
08 Special Needs	28	29	30	29	30	30	30	31	31	31	29	29	30
3-5 Years	26	20	20	21	21	22	22	23	24	25	25	28	23
School Age	2	9	10	8	9	8	8	8	7	6	4	1	7
3. Large Family Child Care Home	358	337	324	324	316	311	319	317	315	295	302	278	316
01 TCA	0	1	1	1	1	1	1	0	0	0	0	0	1
3-5 Years	0	1	1	1	1	1	1	0	0	0	0	0	1
02 At Risk < 9	24	27	29	27	21	17	20	18	23	15	22	22	22
0-2 Years	13	13	14	13	11	7	6	7	7	7	9	8	10
3-5 Years	8	10	8	6	7	7	8	9	10	7	10	11	8
School Age	3	4	7	8	3	3	6	2	6	1	3	3	4
03 Econ Disadvantage < SCH Age	276	242	232	235	230	233	239	244	234	228	232	209	236
0-2 Years	143	139	139	136	133	127	126	128	118	104	101	95	124
3-5 Years	133	103	93	99	97	106	113	116	116	124	131	114	112
05 At Risk Age 9-12	1	1	1	2	2	2	2	0	3	2	1	2	2
School Age	1	1	1	2	2	2	2	0	3	2	1	2	2

CHILDREN SERVED IN SCHOOL READINESS PROGRAM

2024							2025						
CATEGORIES	JUL	AUG	SEP	OCT	NOV	DEC	JAN	FEB	MAR	APR	MAY	JUN	MONTHLY AVERAGE
06 Econ Disadvantage - SCH Age	55	65	60	58	61	57	56	54	54	49	46	45	55
School Age	55	65	60	58	61	57	56	54	54	49	46	45	55
08 Special Needs	2	1	1	1	1	1	1	1	1	1	1	0	1
3-5 Years	1	1	1	1	1	1	1	1	1	1	1	0	1
School Age	1	0	0	0	0	0	0	0	0	0	0	0	0
4. Licensed Family Child Care Home	584	561	550	543	551	547	562	561	548	528	522	489	546
01 TCA	6	6	6	6	6	6	2	4	4	2	2	2	4
0-2 Years	3	3	3	3	2	2	0	1	1	0	0	0	2
3-5 Years	3	2	2	2	3	3	1	1	1	1	1	1	2
School Age	0	1	1	1	1	1	1	2	2	1	1	1	1
02 At Risk < 9	50	45	47	48	41	33	32	35	34	40	40	34	40
0-2 Years	25	20	23	28	24	20	19	20	22	22	24	24	23
3-5 Years	13	13	11	10	9	8	8	10	8	14	15	7	11
School Age	12	12	13	10	8	5	5	5	4	4	1	3	7
03 Econ Disadvantage < SCH Age	391	351	332	336	349	362	373	373	369	354	347	327	355
0-2 Years	202	201	197	196	206	215	210	213	204	192	189	169	200
3-5 Years	189	150	135	140	143	147	163	160	165	162	158	158	156
04 TCC < SCH Age	0	1	1	1	1	1	1	1	1	1	1	1	1
0-2 Years	0	1	1	1	1	1	1	1	1	1	1	1	1
05 At Risk Age 9-12	8	6	7	6	6	6	7	5	6	6	5	9	6
School Age	8	6	7	6	6	6	7	5	6	6	5	9	6
06 Econ Disadvantage - SCH Age	128	151	155	144	147	138	146	142	133	124	126	115	137
School Age	128	151	155	144	147	138	146	142	133	124	126	115	137
08 Special Needs	1	1	2	2	1	1	1	1	1	1	1	1	1
3-5 Years	1	1	2	2	1	1	1	1	1	1	1	1	1
7. Public School	760	1,256	1,280	1,370	1,409	1,461	1,487	1,456	1,440	1,428	1,391	612	1,279
01 TCA	5	4	6	6	8	11	13	14	10	11	9	5	9
School Age	5	4	6	6	8	11	13	14	10	11	9	5	9
02 At Risk < 9	52	68	60	62	64	58	65	62	56	54	53	27	57
3-5 Years	0	0	0	1	0	0	0	0	0	0	0	0	0
School Age	52	68	60	61	64	58	65	62	56	54	53	27	57
05 At Risk Age 9-12	27	33	23	28	31	33	34	39	33	34	26	10	29
School Age	27	33	23	28	31	33	34	39	33	34	26	10	29
06 Econ Disadvantage - SCH Age	676	1,147	1,187	1,269	1,301	1,354	1,371	1,337	1,336	1,324	1,297	567	1,181
School Age	676	1,147	1,187	1,269	1,301	1,354	1,371	1,337	1,336	1,324	1,297	567	1,181
07 TCC SCH Age	0	1	1	1	1	1	1	1	2	2	3	1	1
School Age	0	1	1	1	1	1	1	1	2	2	3	1	1
08 Special Needs	0	3	3	4	4	4	3	3	3	3	3	2	3
School Age	0	3	3	4	4	4	3	3	3	3	3	2	3

CHILDREN SERVED IN SCHOOL READINESS PROGRAM

CATEGORIES	2024						2025						MONTHLY AVERAGE
	JUL	AUG	SEP	OCT	NOV	DEC	JAN	FEB	MAR	APR	MAY	JUN	
2. License-Exempt Centers	117	411	519	550	546	554	555	547	502	487	469	120	448
01 TCA	0	2	2	3	4	3	2	1	3	1	1	0	2
0-2 Years	0	0	0	0	1	1	0	0	0	0	0	0	0
3-5 Years	0	0	0	1	1	0	0	0	0	0	0	0	0
School Age	0	2	2	2	2	2	2	1	3	1	1	0	2
02 At Risk < 9	6	28	42	45	41	47	47	45	37	36	33	10	35
0-2 Years	1	0	2	2	2	3	3	2	0	0	0	1	1
3-5 Years	1	4	5	5	4	4	5	5	4	4	4	4	4
School Age	4	24	35	38	35	40	39	38	33	32	29	5	29
03 Econ Disadvantage < SCH Age	74	75	69	79	73	73	73	75	54	55	52	48	67
0-2 Years	32	32	32	34	29	27	28	29	22	21	19	17	27
3-5 Years	42	43	37	45	44	46	45	46	32	34	33	31	40
05 At Risk Age 9-12	2	9	16	16	16	14	16	16	12	11	10	2	12
School Age	2	9	16	16	16	14	16	16	12	11	10	2	12
06 Econ Disadvantage - SCH Age	35	297	390	407	412	417	417	410	396	384	373	60	333
School Age	35	297	390	407	412	417	417	410	396	384	373	60	333
6. Private School	5	14	13	13	17	18	15	17	19	17	17	9	15
03 Econ Disadvantage < SCH Age	4	9	8	8	10	11	8	10	11	9	10	2	8
0-2 Years	0	1	1	1	1	1	0	0	0	0	0	0	0
3-5 Years	4	8	7	7	9	10	8	10	11	9	10	2	8
06 Econ Disadvantage - SCH Age	1	5	5	5	7	7	7	7	8	8	7	7	6
School Age	1	5	5	5	7	7	7	7	8	8	7	7	6
Monthly Total	11,922	12,761	12,867	12,705	12,674	12,855	13,109	13,059	13,018	12,568	12,425	10,479	12,537

Data is from the EFS Modernization Database as of August 13, 2025.

CHILD DISENROLLMENT

Total number of children disenrolled from Child Care Provider during the year and the reasons for disenrollment.

REASON FOR DISENROLLEMT	NUMBER OF CHILDREN DISENROLLED
Child care provider dismisses child due to child's behavior	36
Child care provider does not meet parent's or guardian's expectations.	20
Child care provider has closed for economic or other business reasons.	62
Child care setting not challenging enough for child	1
Child care setting provided too much stimulation for the child.	4
Child deceased.	1
Child has a duplicate record.	1
Child has exceeded the age-limit for services.	64
Child is no longer residing with the guardian who completed the initial application. New paperwork must be completed by new guardian.	47
Child poses safety risk to other children at program.	7
Child was determined eligible for services but never enrolled with a child care provider.	15
Client deceased.	3
Client does not show up for redetermination.	55
Client failed to comply with program requirements.	4
Client failed to provide required documentation to maintain eligibility.	28
Client has obtained permanent housing and is no longer participating in the domestic violence or homeless program.	1
Client is eligible for services under a different funder (i.e., non funder 1).	1
Client is no longer eligible for services because the family income exceeds the allowable amount for eligibility.	31
Client moved out of the county in which funding is currently provided.	102
Client no longer has a valid purpose for care.	375
Custodian is involved in seasonal work (such as migrant or school district employees) and the child's enrollment is temporarily suspended while custodian is not working.	273
Parent declined Terms and Conditions	12
Parent or guardian lacks resources necessary to keep child in care.	8
Parent/guardian withdrew child from the program.	2,283
Provider dismissed child for noncompliance with the provider's attendance policy.	498
Provider dropped child from the provider's program.	313
Provider no longer receiving SR or VPK funds due to noncompliance or low performance	68
Provider remains open, but no longer provides VPK or SR services.	119
Referral from referring agency has expired.	142
Referring agency has terminated the referral.	23
Suspected Fraud Case.	2
The enrollment record was updated.	1,563
The next authorization period was approved.	65
The program where the child was receiving services changed ownership. The new owner has a new provider record.	17
Transfer from one SR funding source to another (i.e. BG3 to BG8).	17
Transfer to another provider record (even if the second record is owned by the same provider).	70
Total	6,331

Data is from the EFS Modernization Database as of August 13, 2025.

PROVIDER TYPE

Total number of providers by provider type.

PROVIDER TYPE	TOTAL PROVIDERS	OFFERED SR ONLY	OFFERED VPK ONLY	BOTH
1. Licensed Private Centers	420	97	83	240
2. License-Exempt Centers	42	37	3	2
3. Large Family Child Care Home	68	60	1	7
4. Licensed Family Child Care Home	177	175	1	1
6. Private School	20	0	17	3
7. Public School	161	46	37	78

SCHOOL READINESS PROVIDER REVOCATION

List of any school readiness program provider, by type, whose eligibility to deliver the school readiness program is revoked, including a brief description of the state or federal violation that resulted in the revocation.

PROVIDER NAME	ADDRESS	CITY	PROVIDER TYPE	ELC NARRATIVE
[REDACTED]	[REDACTED]	[REDACTED]	[REDACTED]	[REDACTED]
[REDACTED]	[REDACTED]	[REDACTED]	[REDACTED]	[REDACTED]
[REDACTED]	[REDACTED]	[REDACTED]	[REDACTED]	[REDACTED]
[REDACTED]	[REDACTED]	[REDACTED]	[REDACTED]	[REDACTED]

VOLUNTARY PREKINDERGARTEN PROVIDER REVOCATION

List of any voluntary prekindergarten program provider, by type, whose eligibility to deliver the voluntary prekindergarten program is revoked, including a brief description of the state violation that resulted in the revocation.

PROVIDER NAME	ADDRESS	CITY	PROVIDER TYPE	ELC NARRATIVE
No providers to report.				

Data is from the EFS Modernization Database as of August 13, 2025.

*Page 28 contains sensitive information. If you wish to view this page, please contact Community Relations at communityrelations@elchc.org

CHILDREN SERVED BY PROVIDER

The total number of children served in each provider facility.

PROVIDER NAME	ADDRESS	CITY	CHILDREN SERVED		
			UNDUPLICATED TOTAL	SCHOOL READINESS	VPK
3 LETTERS LEARNING CENTER	6710 N ARMENIA AVE	TAMPA	24	24	0
3 LITTLE DREAMERS LLC	1604 E MULBERRY DR	TAMPA	3	3	0
5 LITTLE STARS	6816 N HIMES AVE	TAMPA	1	1	0
A + LEARNING CENTER	1109 W GRANT ST	PLANT CITY	123	123	0
A BRIDGE OF LEARNING, CHILD DEVELOPMENT & LEARNING CENTER	3902 CORPOREX PARK DR SUITE 100	TAMPA	56	48	13
A BRIGHTER COMMUNITY, INC.	1613 N MARION ST	TAMPA	3	3	0
A CHILDREN'S KASTLE E.L.C. INC. AT WINTHROP	11297 WINTHROP MAIN ST	RIVERVIEW	55	20	38
A CHILD'S HAVEN PRIVATE PRESCHOOL	1520 BRENTWOOD HILLS BLVD	VALRICO	68	23	47
A CHILD'S WORLD LEARNING ACADEMY II	8474 W HILLSBOROUGH AVE	TAMPA	130	116	25
A CHILD'S WORLD LEARNING ACADEMY, INC.	3223 ALENE ST	TAMPA	195	179	29
A CHILDZ BIZZNESS LLC	7512 MORNING GLORY LN	TAMPA	9	9	0
A HEAD START FAMILY CHILD CARE HOME	4106 EAST OKARA ROAD	TAMPA	7	7	0
A LITTLE KIDS ACADEMY	11105 E US HIGHWAY 92	SEFFNER	112	112	0
A PERFECT START ELCC	2005 E 21ST AVE	TAMPA	67	67	0
A READINESS LEARNING ACADEMY INC.	489 APOLLO BEACH BLVD	APOLLO BEACH	82	69	18
A TODAY'S CHILD	2150 W. DR. M.L. KING JR. BLVD	TAMPA	77	68	15
A.J.'S ANGELS II	1139 1ST ST NW	RUSKIN	110	96	21
ABC KIDZ PRESCHOOL, INC	1745 W FLETCHER AVE	TAMPA	56	49	12
ABC WORLD LEARNING CENTER LLC	7345 JACKSON SPRINGS RD STE B	TAMPA	55	43	18
ABUELA'S HOUSE CHILDCARE LLC	2902 W IDLEWILD AVE	TAMPA	2	2	0
ACADEMY OF ACHIEVERS LLC	536 MAYDELL DR	TAMPA	36	32	5
ACADEMY OF BRANDON	722 LITHIA PINECREST RD	BRANDON	43	37	10
ACADEMY OF MONTESSORI INTERNATIONAL INC	15421 MORRIS BRIDGE RD	THONOTOSASSA	15	0	15
ACHIEVEMENT CENTER	4601 E BUSCH BLVD	TAMPA	249	235	31
ACHIEVEMENT CENTER DALE MABRY	5714 S DALE MABRY HWY	TAMPA	139	139	0
ACSH BRANDON LLC	733 W LUMSDEN ROAD	BRANDON	44	37	10
ADELYN AMARO LARGE FAMILY CHILD CARE HOME	9122 CAMINO VILLA BLVD	TAMPA	10	10	0
ADITA DAY CARE INC	7806 FELICE AVE	TAMPA	10	10	0
ADRIANA MUNOZ LARGE FAMILY CHILD CARE HOME	112 E 145TH AVE	TAMPA	1	1	0
AISHA SMITH FAMILY DAY CARE HOME	1509 EAST DR. MARTIN LUTHER KING JR. BLVD	PLANT CITY	3	3	0
ALBERTINA'S CHILD CARE, LLC	3105 W ABDELLA ST	TAMPA	1	1	0
ALFORD AND ASHE ACADEMY	7739 GIBSONTON DR	GIBSONTON	64	56	16
ALIAGNA CARRERAS-FERNANDEZ FAMILY DAY CARE HOME	8909 BRIAR HOLLOW CT	TAMPA	3	3	0
ALIAGNA CARRERAS-FERNANDEZ LARGE FAMILY CHILD CARE HOME	8321 W POCAHONTAS AVE	TAMPA	2	2	0

PROVIDER NAME	ADDRESS	CITY	CHILDREN SERVED		
			UNDUPLICATED TOTAL	SCHOOL READINESS	VPK
ALIDY CHILD CARE LLC	7507 AMBER CT	TAMPA	3	3	0
ALISON BURNEY FAMILY DAY CARE HOME	444 DUNAWAY DR	VALRICO	4	4	0
ALL 4 KIDS LEARNING CENTER	608 E MORGAN ST	BRANDON	22	17	7
ALL GODS KIDS ACADEMY INC	6501 N CENTRAL AVE	TAMPA	91	91	0
ALL NATIONS ACADEMY	10022 CHRISTINA DRIVE	RIVERVIEW	20	0	20
ALPHABET BOULEVARD FAMILY CHILDCARE HOME	2412 E 19TH AVE	TAMPA	6	6	0
ALPHABET LEARNING CENTER INC.	4423 KELLY RD	TAMPA	49	43	7
AMAZING EXPLORERS ACADEMY CITRUS PARK	10011 WESTPARK PRESERVE BLVD	TAMPA	23	5	18
AMAZING EXPLORERS ACADEMY MARIPOSA	10308 CARDERA DR	RIVERVIEW	44	20	24
AMAZING EXPLORERS ACADEMY WESTCHASE	8080 COUNTRYWAY BLVD	TAMPA	32	0	32
AMERICAN HOME CHILD DAYCARE LLC	7110 N WHITTIER ST	TAMPA	2	2	0
AMERICAN MONTESSORI PREPARATORY SCHOOL LLC	15102 AMBERLY DR	TAMPA	11	0	11
AMERICAN YOUTH ACADEMY INC.	5905 E 130TH AVE	TAMPA	48	0	48
ANAIRSY THE LITTLE ANGELS LLC	5459 PENTAIL CIRCLE	TAMPA	2	2	0
ANDRIA'S LITTLE STARS LLC	2501 KRUEGER LN	TAMPA	11	11	0
ANGELAS HOME DAY CARE INC	409 DESIREE DR	BRANDON	5	5	0
ANGELENA BETHUNE FAMILY DAY CARE HOME	514 9TH STREET NORTHEAST	RUSKIN	4	4	0
ANIS FIGUEREDO-SOTTO LARGE FAMILY CHILD CARE HOME	10927 TAILFEATHER CT	TAMPA	2	2	0
ANNETTE WALLACE FAMILY DAY CARE HOME	5506 RAINWOOD MEADOWS DRIVE	APOLLO BEACH	5	5	0
ANOTHER HOME DAYCARE & LEARNING CENTER	706 N PARSONS AVE	BRANDON	11	0	11
ANTONIA CARRILLO-OCHOA FAMILY DAY CARE HOME	310 E 120TH AVE	TAMPA	2	2	0
APOLLO BEACH CHRISTIAN PRESCHOOL	6414 GOLF AND SEA BLVD	APOLLO BEACH	52	0	52
APOLLO BEACH RACQUET & FITNESS CLUB	6520 RICHIES WAY	APOLLO BEACH	16	2	14
AQUARIUM CHILD CARE LLC	2511 GREENMOOR PL	TAMPA	2	2	0
ARASAY MARIN-SUAREZ FAMILY DAY CARE HOME	214 TERRACE DR	BRANDON	5	5	0
ARETRINA'S FAMILY CHILD CARE HOME, LLC	5805 34TH AVE S	TAMPA	46	46	0
ARNEATRA MCMILLAN FAMILY HOME CHILDCARE	4611 N 37TH STREET	TAMPA	4	4	0
AUTUMN LEAF ACADEMY INC	3007 S. DANIELS ROAD	PLANT CITY	41	34	11
AYALIBYS PAULA FHCC	8207 DRYCREEK DR	TAMPA	2	2	1
AYMARA'S LITTLE ANGELS HOME DAYCARE LLC	8825 OAK CIR	TAMPA	3	3	0
AYSIS TORRIJOS LARGE FAMILY CHILD CARE HOME	3226 LAS BRISAS DR	RIVERVIEW	3	3	0
B & G DAY CARE AND KINDERGARTEN INC.	14419 DR MLK BOULEVARD	DOVER	25	21	7

PROVIDER NAME	ADDRESS	CITY	CHILDREN SERVED		
			UNDUPLICATED TOTAL	SCHOOL READINESS	VPK
BABY BLISS DAYCARE LCC	5307 SOUTHWICK DR	TAMPA	3	3	0
BABY STEPS/EARLY STEPS	811 S CASTLE COURT	TAMPA	22	22	0
BACKYARD BEARS DAY SCHOOLS	6602 N HABANA AVE	TAMPA	100	79	37
BACK 2 BASICS ACADEMY	1609 E LOUISIANA AVE	TAMPA	34	31	5
BAMBOO BAMBINO LEARNING ACADEMY	914 N CASTLE CT	TAMPA	31	31	0
BARBARA DE LA ROSA FAMILY DAY CARE HOME	3407 W KIRBY ST	TAMPA	15	15	0
BAY HOPE DAY SCHOOL	17030 LAKESHORE RD	LUTZ	105	0	105
BAYCREST ACADEMY AT BRANDON	202 PAULS DR	BRANDON	62	59	10
BAYCREST ACADEMY AT TAMPA INC	105 W DR MARTIN LUTHER KING JR BLVD	TAMPA	33	33	0
BELKIS BELLO-ESTRADA FAMILY DAY CARE HOME	6021 WILSHIRE DR	TAMPA	6	6	0
BELL SHOALS BAPTIST ACADEMY	2102 BELL SHOALS RD	BRANDON	69	0	69
BENITA JUNCO-CRUZ FAMILY DAY CARE HOME	8204 PENNYWELL PL	TAMPA	1	1	0
BEST FRIENDS FOR KIDZ LEARNING LABORATORY	408 E LUMSDEN RD	BRANDON	151	140	22
BEVERLY ORTIZ FAMILY HOME DAYCARE	14401 N18TH STREET	TAMPA	1	1	0
BIBLE TRUTH MINISTRIES INTL, INC.	4902 N 22ND ST	TAMPA	45	36	13
BIBLE-BASED FELLOWSHIP CHILD CARE CENTER	8718 N 46TH ST	TEMPLE TERR	79	70	20
BLUE SUMMIT ACADEMY	19215 LIVINGSTON AVE	LUTZ	39	20	23
BOB GILBERTSON CENTRAL CITY FAMILY YMCA-PRESCHOOL	110 E. OAK AVE	TAMPA	3	3	0
BOCC BEALSVILLE HEAD START CENTER	5100 HORTON ROAD	PLANT CITY	15	0	15
BOCC BRANDON COMMUNITY HEAD START	9547 E. COLUMBUS DRIVE	TAMPA	30	0	30
BOCC BUILDING BLOCKS HEAD START CENTER	2911 N 33RD ST	TAMPA	24	0	24
BOCC CHURCH PARK HEAD START/ EHS	5657 WEBB ROAD	TAMPA	22	0	22
BOCC DEBORAH MCNAIR-CALHOUN HS/EHS	2911 E. HENRY STREET	TAMPA	29	0	29
BOCC DELORIS MCCLOUD HEAD START	2103 N. ROME AVENUE	TAMPA	41	0	41
BOCC GRANT PARK HEAD START	4422 E COLUMBUS DR	TAMPA	18	0	18
BOCC MANGO HEAD START/EHS	11210 E. BROADWAY AVENUE	SEFFNER	37	0	37
BOCC MOSI HEAD START & PRESCHOOL CENTER	4901 E. FOWLER AVENUE	TAMPA	30	0	30
BOCC NORTH TAMPA COMMUNITY HEAD START	14013 N. 22ND AVENUE	TAMPA	44	0	44
BOCC NYE PARK HEAD START	630 SUNSET LANE	LUTZ	23	0	23
BOCC PLANT CITY HEAD START CENTER	1304 ALSOBROOK STREET	PLANT CITY	15	0	15
BOCC ROBLES PARK HEAD START CENTER	3814 N. CENTRAL AVENUE	TAMPA	20	0	20
BOCC SOUTH COUNTY HEAD START CENTER	215 SE. 14TH AVENUE	RUSKIN	31	0	31
BOCC STRAWBERRY HILLS HS EHS	701 TILLMAN PLACE	PLANT CITY	21	0	21

PROVIDER NAME	ADDRESS	CITY	CHILDREN SERVED		
			UNDUPLICATED TOTAL	SCHOOL READINESS	VPK
BOCC TOWN AND COUNTRY COMMONS HDST	7606 PAULA DRIVE	TAMPA	33	0	33
BOYS & GIRLS CLUB OF TAMPA BAY - WIMAUMA	5809 EDINA STREET	WIMAUMA	3	3	0
BOYS & GIRLS CLUBS EXCELSIOR PREP	2200 E FOWLER AVE	TAMPA	26	26	0
BOYS AND GIRLS CLUB BRANDON BILL CAREY	510 E. SADIE ST	BRANDON	16	16	0
BOYS AND GIRLS CLUB FREDDIE SOLOMON	4805 EAST SLIGH AVENUE	TAMPA	35	35	0
BOYS AND GIRLS CLUB GARCIA SALESIAN	302 W. GLADYS STREET	TAMPA	16	16	0
BOYS AND GIRLS CLUB WILBERT DAVIS	3515 SARAH STREET	TAMPA	10	10	0
BOYS AND GIRLS CLUB RIVERVIEW	6809 KRYCUL AVENUE	RIVERVIEW	14	14	0
BOYS AND GIRLS CLUBS TEMPLE TERRACE	7701 TEMPLE TERRACE HWY	TEMPLE TERR	25	25	0
BOYS AND GIRLS CLUB WEST PLANT CITY	901 WALLER ST	PLANT CITY	12	12	0
BRADLEY'S LITTLE ANGELS	3004 LAUREL LN	PLANT CITY	13	13	0
BRIDGES AT WESLEY EARLY LEARNING CENTER	6100 MEMORIAL HIGHWAY	TAMPA	23	2	21
BRIGHT FUTURES OF MERKIS	704 BELT CT	TAMPA	2	2	0
BRIGHT HORIZONS CHILDREN'S CENTER- HUNTER'S OAK	18002 HUNTERS OAK CT	TAMPA	32	0	32
BRIGHT HORIZONS CHILDREN'S CENTERS- TAMPA PALMS	5171 CYPRESS PRESERVE DR	TAMPA	19	0	19
BRIGHT STARS CHILD CARE AND EARLY LEARNING CENTER LLC	325 WEST BUSCH BLVD -	TAMPA	88	85	9
BRIGHT STARS LEARNING ACADEMY	7815 TIDEWATER TRL	TAMPA	63	63	0
BRIGHTER DAYS-HWY 92	11825 E US HIGHWAY 92	SEFFNER	144	133	24
BRIGHTER DAYS-LAKEWOOD	119 S LAKEWOOD DR	BRANDON	131	127	19
BRIGHTER DAYS-PARSONS	1502 N PARSONS AVE	BRANDON	91	88	8
BROAD LITTLE THINKERS	2310 W. BROAD ST	TAMPA	1	1	0
CARE BEARS LEARNING ACADEMY LLC	115 MARGARET ST STE A	BRANDON	20	20	0
CARE-A-LOT CHILD CARE CENTER, INC.	4002 W HUMPHREY ST	TAMPA	33	30	8
CARIDAD MOLEIRO FAMILY DAY CARE HOME	7702 WINGING WAY DR	TAMPA	2	2	0
CARING FOR ANGELS LLC	209 W AZALEA AVE	TAMPA	3	3	0
CARLTON ACADEMY DAY SCHOOL LLC	205 N BRUSH ST	TAMPA	25	0	25
CARMEN DIAZ FAMILY DAY CARE HOME	8706 N PACKWOOD AVE	TAMPA	5	5	0
CARMEN GONZALEZ LARGE FAMILY CHILD CARE HOME	809 PAPAYA DR	TAMPA	7	7	0
CARMEN RAMOS-BLANCO FAMILY DAY CARE HOME	3409 W OSBORNE AVE	TAMPA	6	6	0
CAROL TAYLOR FAMILY DAY CARE HOME	10424 STRAWBERRY TETRA DR	RIVERVIEW	18	18	0
CAROLYN COLLINS FAMILY DAY CARE HOME	8422 N RIVER DUNE ST	TAMPA	9	9	0

PROVIDER NAME	ADDRESS	CITY	CHILDREN SERVED		
			UNDUPLICATED TOTAL	SCHOOL READINESS	VPK
CAROLYN NEWTON FAMILY DAY CARE HOME	1318 LARSEN LN	TAMPA	12	12	0
CARROLLWOOD VILLAGE KINDERGARTEN & DAY NURSERY INC	4405 EHRLICH RD	TAMPA	26	26	0
CASITA 4 KIDS LEARNING CENTER LLC	7415 DESTIN DR	TAMPA	16	16	0
CASTLES OF IMAGINATION	820 BRYAN RD	BRANDON	56	56	0
CATHERINE'S EARLY LEARNING ACADEMY	11418 BLOOMINGDALE AVE	RIVERVIEW	43	43	0
CECELIA LIVINGSTON FAMILY DAY CARE HOME	3002 N 46TH ST	TAMPA	1	1	0
CFM ROSA VALDEZ CENTER AT OAK GROVE	2707 W WATERS AVE	TAMPA	54	43	16
CFM-ROSA VALDEZ CENTER	1802 N ALBANY AVE	TAMPA	55	49	13
CHILDCARE OF BRANDON	730 BRANDON TOWN CENTER DR	BRANDON	54	0	54
CHILDCARE OF BRANDON BIG BEND	6050 BIG BEND ROAD	GIBSONTON	95	33	63
CHILDCARE OF BRANDON BLOOMINGDALE HILLS	10811 BLOOMINGDALE AVE	RIVERVIEW	32	20	12
CHILDCARE OF BRANDON BROADWAY	11002 E BROADWAY AVE	SEFFNER	70	51	31
CHILDCARE OF BRANDON LITHIA	3105 LITHIA PINECREST RD	VALRICO	20	5	15
CHILDCARE OF BRANDON LYNWOOD	5063 WHITE CHICORY DR	APOLLO BEACH	32	13	20
CHILDCARE OF BRANDON MISSOURI	10710 MISSOURI AVE	RIVERVIEW	49	31	20
CHILDLIFE PRESCHOOL-CARROLLWOOD/CITRUS PARK	13140 LYNN RD	TAMPA	71	43	38
CHILDLIFE PRESCHOOL-COUNTRYWAY/WESTCHASE	11201 W WATERS AVE	TAMPA	33	19	20
CHILDREN OF THE WORLD ACADEMY I INC.	6033 MEMORIAL HWY	TAMPA	86	78	18
CHILDREN OF THE WORLD ACADEMY II INC.	8731 JACKSON SPRINGS RD	TAMPA	106	85	34
CHILDREN OF THE WORLD ACADEMY III INC	4901 N HABANA AVE	TAMPA	94	70	30
CHILDREN'S ACADEMY FISHHAWK LLC	10560 BROWNING RD	LITHIA	57	40	21
CHILDREN'S ACADEMY INC.	506 LIMONA RD	BRANDON	101	57	50
CHILDREN'S ARK EARLY LEARNING	950 S MULRENNAN RD	VALRICO	50	35	16
CHILDREN'S DISCOVERY	13101 N. 23RD STREET	TAMPA	196	191	15
CHILDREN'S GARDEN NURSERY & PRESCHOOL	4106 N 15TH ST APT A	TAMPA	3	3	0
CHILDREN'S NEST DAY SCHOOL - 62ND ST	11504 N 62ND ST	TEMPLE TERR	102	81	31
CHILDREN'S NEST DAY SCHOOL - BRYAN	3221 BRYAN RD	BRANDON	68	57	18
CHILDREN'S NEST DAY SCHOOL - DELEON	2601 W DE LEON ST	TAMPA	34	19	16
CHILDREN'S NEST DAY SCHOOL - MAPLEDALE	15713 MAPLEDALE DR	TAMPA	58	40	26
CHILDREN'S NEST DAY SCHOOL - MENDONSA	1311 MENDONSA RD	PLANT CITY	136	104	43
CHILDREN'S TREE HOUSE LLC	7001 ALMENDARIZ WAY	TAMPA	3	3	0
CITIGROUP FAMILY CENTER	3701 QUEEN PALM DRIVE	TAMPA	23	0	23

PROVIDER NAME	ADDRESS	CITY	CHILDREN SERVED		
			UNDUPLICATED TOTAL	SCHOOL READINESS	VPK
CITRUS PARK DAY SCHOOL	11112 HENDERSON RD	TAMPA	139	91	62
CITRUS PARK DAY SCHOOL NORTH	11602 N HENDERSON ROAD	TAMPA	22	22	0
CLARITZA FLORES-NUNEZ FAMILY DAY CARE HOME	8103 RIDEIN RD	TAMPA	4	4	0
COLLEGE HILL COGIC PRESCHOOL	1002 E. MLK BLVD.	TAMPA	48	38	11
COPELAND FAMILY DAY CARE HOME	8317 CROTON AVE	TAMPA	6	6	0
CORE VALUES FOR KIDZ LLC	11412 N CENTRAL AVE	TAMPA	11	11	0
CORPUS CHRISTI CATHOLIC SCHOOL	9715 N 56TH ST	TEMPLE TERR	15	0	15
COUNTRY WAY VILLAGE CHILD CARE INC	8810 W NORFOLK ST	TAMPA	27	25	4
CREATE LEARNING CENTER	2010 N FLORIDA AVE	TAMPA	216	216	0
CREATE MANGO	4220 COUNTY ROAD 579	SEFFNER	67	67	0
CREATIVE KIDZ LEARNING ACADEMY LLC	6130 FLORENCE ST	GIBSONTON	37	33	8
CREATIVE LEARNING ACADEMY	5557 W WATERS AVE	TAMPA	74	53	25
CREATIVE LEARNING ACADEMY ARMENIA	7912 N ARMENIA AVE	TAMPA	47	41	12
CREATIVE WORLD CAUSEWAY	9815 CAUSEWAY BLVD	TAMPA	254	169	110
CREATIVE WORLD FISHHAWK	5525 OSPREY RIDGE DR	LITHIA	44	13	33
CREATIVE WORLD RIVERVIEW	11361 SYMMES RD	RIVERVIEW	98	27	76
CREATIVE WORLD SCHOOL APOLLO BEACH	5931 FROND WAY	APOLLO BEACH	195	107	99
CREATIVE WORLD SCHOOL CROSS CREEK	10693 CROSS CREEK BLVD	TAMPA	61	0	61
CREATIVE WORLD SCHOOL TAMPA PALMS	5365 PRIMROSE LAKE CIR	TAMPA	152	105	61
CRISTI `S LITTLE OWLS LLC	8408 WOODDRIFT DR	TAMPA	1	1	0
CRISTI `S LITTLE OWLS LLC	3218 W LOUISIANA AVE	TAMPA	4	4	0
CROSSROADS BAPTIST CHURCH OF LITHIA INC.	10405 S COUNTY ROAD 39	LITHIA	31	24	9
DANAY SEBASCO-GONZALEZ FAMILY DAY CARE HOME	9013 HICKORY CIR	TAMPA	2	2	0
DANIA ABRAHANTES FAMILY CHILD CARE, LLC	4411 W HANNA AVE	TAMPA	2	2	0
DAYAMI HAPPY GROW LLC	8327 TERRACEWOOD CIR	TAMPA	6	6	0
DAYAMI HAPPY GROW LLC	8420 WOODLAKE DR	TAMPA	9	9	0
DAYAMIT PEREZ-VALDES FAMILY DAY CARE HOME	8107 BLOSSOM AVE	TAMPA	6	6	0
DEBRA S. RICHARDSON, LLC	8405 ASH AVE	TAMPA	10	10	0
DELORES M SMITH ACADEMY OF TAMPA BAY INC	2001 PINE LAKE DR	TAMPA	4	4	0
DENISE DUNLAP FAMILY DAY CARE HOME	3528 FUTCH RD	PLANT CITY	2	2	0
DENISE NEWSOME FAMILY DAY CARE HOME	2614 E 12TH AVE	TAMPA	5	5	0
DESIREE BRUCE FAMILY DAY CARE HOME	1949 GREGORY DR	TAMPA	3	3	0
DEVINED LITTLE STEPS ACADEMY LLC	2004 E HAMILTON AVE	TAMPA	17	15	4
DISCOVERY POINT #54	3472 KINGS COMMERCIAL CT	VALRICO	85	55	36
DISCOVERY POINT #70	13011 SUMMERFIELD CROSSING BLVD	RIVERVIEW	65	25	42

PROVIDER NAME	ADDRESS	CITY	CHILDREN SERVED		
			UNDUPLICATED TOTAL	SCHOOL READINESS	VPK
DISCOVERY POINT CHILD DEVELOPMENT CENTER #60	11719 SYMMES RD	RIVERVIEW	58	21	37
DISCOVERY POINT DEVELOPMENT CENTER #34	5203 W LUTZ LAKE FERN RD	LUTZ	60	20	40
DIXON FAMILY DAY CARE HOME	2518 W WALNUT ST	TAMPA	18	18	0
DOLPHIE FAMILY CHILD CARE HOME LLC	2118 W ROBSON ST	TAMPA	4	4	0
DOMINION LIFE CHRISTIAN ACADEMY	9390 N FLORIDA AVE	TAMPA	141	137	15
DONDE SIEMPRE BRILLA EL SOL LLC	406 W SITKA ST	TAMPA	4	4	0
DREAM CHASERS ACADEMY PRESCHOOL AND CHILDCARE	14324 N BOULEVARD	TAMPA	68	62	10
DREAMLAND CHILDCARE LLC	1810 HEATHER AVE	TAMPA	20	20	0
EARLY CHILD DEVELOPMENT CENTER OF TAMPA LLC	8405 N 40TH ST	TAMPA	84	84	0
EARLY EXPLORERS LLC	1520 BRENTWOOD HILLS BLVD	VALRICO	43	15	29
EARLY SCHOLARS LEARNING ACADEMY LLC	9321 N ARMENIA AVE	TAMPA	35	23	16
EARLY STEPS MONTESSORI ACADEMY, LLC	10701 ANDERSON RD	TAMPA	19	0	19
EARTH ANGEL'S LEARNING ACADEMY	9714 N BOULEVARD	TAMPA	132	124	18
EASTERSEALS SCHOOL FOR LIMITLESS LEARNING	2460 BLOOMINGDALE AVE SUITE 170	VALRICO	10	10	0
ECHO LEARNING CENTER BILINGUAL	6535 E HILLSBOROUGH AVE	TAMPA	39	34	6
ECHO LEARNING CENTER BILINGUAL MONTESSORI	1420 W. BUSCH BLVD. N/A	TAMPA	11	11	0
EDUCATED MINDS ACADEMY INC.	10025 W HILLSBOROUGH AVE	TAMPA	91	64	35
EILEEN MANN FAMILY DAY CARE HOME	4203 S COVINA CIR	TAMPA	7	7	0
EL ARCA DE NOE FAMILY CHILD CARE	14606 KNOLL RIDGE DR	TAMPA	1	1	0
ELIZABETH MACHADO-CORREA FAMILY DAY CARE HOME	813 PATBUR AVE	TAMPA	5	5	0
ELIZABETH TAYLOR FAMILY DAY CARE HOME	921 E LOTUS AVE	TAMPA	15	15	0
ELLIES SMALL WORLD, LLC	3115 W LAMBRIGHT ST	TAMPA	34	29	13
ELSA KIDS DAYCARE CENTER LLC	6315 W CHELSEA ST	TAMPA	46	40	6
EMMANUEL FAMILY CHILDCARE LLC	6216 PALMVIEW CT	TAMPA	1	1	0
ESTERZIE NIXON FAMILY DAY CARE HOME	4116 E 99TH AVE	TAMPA	1	1	0
EUGENIA HENDERSON FAMILY DAY CARE HOME	4814 S. 87TH STREET	TAMPA	21	21	0
EXTREME YOUTH SPORTS TAMPA BAY LLC	4920 NEWKIRK DR STE 5	TAMPA	5	5	0
FACUNDA ARENAS FAMILY DAY CARE HOME	3901 W OKLAHOMA AVE	TAMPA	7	7	0
FAITH CHRISTIAN ACADEMY PRESCHOOL	1202 S COLLINS ST	PLANT CITY	14	7	7
FAITH OUTREACH ACADEMY	7607 SHELDON RD	TAMPA	13	10	6
FAITH VILLAGE PRESCHOOL	11737 ALBATROSS LN	RIVERVIEW	3	3	0
FAMILY CHILD CARE HOME FANTASIAS	5108 SALEM ST	TAMPA	12	12	0
FAMILY LOVING DAYCARE INC	9912 N MYRTLE ST	TAMPA	38	38	0
FAMILY OF CHRIST LUTHERAN CHURCH CHILD DEVELOPMENT CENTER	16190 BRUCE B DOWNS BLVD	TAMPA	64	0	64

PROVIDER NAME	ADDRESS	CITY	CHILDREN SERVED		
			UNDUPLICATED TOTAL	SCHOOL READINESS	VPK
FANTASY HOME DAY CARE	1730 W COMANCHE AVE	TAMPA	1	1	0
FAT ALBERT'S DAYCARE CENTER, INC.	4201 E HANNA AVE	TAMPA	17	17	0
FIRST BAPTIST BRANDON CHRISTIAN ACADEMY	216 N PARSONS AVE	BRANDON	33	0	33
FIRST BAPTIST CHURCH TEMPLE TERRACE WEE WORLD	10002 N 56TH ST	TEMPLE TERR	51	0	51
FIRST BAPTIST LEARNING CENTER	3309 JAMES L. REDMAN PKWY	PLANT CITY	66	0	66
FIRST BAPTIST RUSKIN CHRISTIAN SCHOOL	820 W COLLEGE AVE	RUSKIN	42	0	42
FIRST DISCOVERIES ACADEMY	1311 BROOKER RD	BRANDON	22	8	14
FIRST PRESB PRESCHOOL OF BRANDON INC	121 CARVER AVE	BRANDON	18	0	18
FIRST STEPS DAYCARE LLC	9522 W FLORA ST	TAMPA	11	11	0
FISH HAWK EARLY LEARNING CENTER	5632 OSPREY PARK PL	LITHIA	50	0	50
FISHHAWK EARLY LEARNING PRESCHOOL	6001 PARKSET DR	LITHIA	80	0	80
FOREST HILLS PRESBYTERIAN LEARNING CENTER, INC.	709 W LINEBAUGH AVE	TAMPA	49	33	20
FOUNDATION CHRISTIAN ACADEMY, INC	3955 LITHIA PINECREST RD	VALRICO	14	0	14
FRANKIE'S FAMILY CHILD CARE HOME INC	1004 YORK CT	BRANDON	6	6	0
FREDDIE JEAN LEARNING ACADEMY #3	4215 ORIENT RD	TAMPA	118	111	13
FRESH BEGINNINGS AND BEYOND LLC	1909 N 35TH ST	TAMPA	6	6	0
FUTURE LEADERS ACHIEVEMENT LLC II	10030 N 30TH STREET	TAMPA	71	71	0
FUTURE LEADERS ACHIEVEMENT LLC III	6910 KARIN CT	TAMPA	52	52	0
FUTURE STARS DAY CARE	2608 W HENRY AVE	TAMPA	2	2	0
GALILEO MONTESSORI ACADEMY	6620 GUNN HWY	TAMPA	21	5	16
GENTLE HANDS ACADEMY LLC	10709 CARLOWAY HILLS DR	WIMAUMA	4	0	4
GLADYS HOME DAYCARE	7608 W LOUISIANA AVE	TAMPA	2	2	0
GOD'S GARDEN PRESCHOOL	3223 GALLAGHER RD	DOVER	38	0	38
GOLDEN HANDS CHILDCARE LLC	6920 TROUT ST	TAMPA	9	9	0
GOLDEN RULE CHILD CARE CENTERS LLC	104 GOLDEN RULE LN	PLANT CITY	120	120	0
GOOD SHEPHERD DAY SCHOOL	501 S DALE MABRY HWY	TAMPA	17	0	17
GRANT PARK CHRISTIAN ACADEMY	5107 E 32ND AVE	TAMPA	14	14	0
GREEN HOUSE LEARNING ACADEMY OF TAMPA	4121 W COMANCHE AVE	TAMPA	36	23	16
HAND IN HAND HOME CHILDCARE LLC	4202 GAME DAY CT	TAMPA	22	22	0
HAPPY DREAMS DAYCARE LLC	7211 N RICHARD AVE	TAMPA	1	1	0
HAPPY PEQUES DAYCARE INC	8707 WOODVINE CT	TAMPA	14	14	0
HAPPY PLACE CHILD CARE, LLC	7507 PARADISE PL	TAMPA	13	13	0
HAPPY TIMES DAYCARE LLC	3708 ARGON DR	TAMPA	8	8	0
HARMON PREP SCHOOL	5030 E BUSCH BLVD 400	TAMPA	30	30	0
HARRIETTE JACKSON FAMILY DAY CARE HOME	1623 CARNEGIE CIRCLE	TAMPA	7	7	0

PROVIDER NAME	ADDRESS	CITY	CHILDREN SERVED		
			UNDUPLICATED TOTAL	SCHOOL READINESS	VPK
HCPS ALAFIA ELEM	3535 CULBREATH ROAD	VALRICO	30	0	30
HCPS ALEXANDER ELEM	5602 NORTH LOIS AVENUE	TAMPA	45	45	0
HCPS ANDERSON ELEM	3910 W FAIR OAKS AVE	TAMPA	8	0	8
HCPS APOLLO BEACH ELEM	501 APOLLO BEACH BOULEVARD	APOLLO BEACH	29	13	16
HCPS BAILEY ELEM	4630 GALLAGHER RD.	DOVER	42	20	22
HCPS BALLAST POINT ELEM	2802 BALLAST POINT BOULEVARD	TAMPA	44	24	20
HCPS BARRINGTON MIDDLE	5925 VILLAGE CENTER DR.	LITHIA	1	1	0
HCPS BAY CREST ELEM	4925 WEBB RD	TAMPA	75	42	33
HCPS BELLAMY ELEM	9720 WILSKY BOULEVARD	TAMPA	89	40	49
HCPS BELMONT ELEM	14150 GATE DANCER RD	SUN CITY CENTER	10	0	10
HCPS BENITO MIDDLE	10101 CROSS CREEK BOULEVARD	TAMPA	7	7	0
HCPS BING ELEM	6409 36TH AVENUE SOUTH	TAMPA	35	24	11
HCPS BOYETTE SPRINGS ELEM	10141 SEDGEBROOK DRIVE	RIVERVIEW	26	16	10
HCPS BROOKER ELEM	812 DEWOLF ROAD	BRANDON	41	0	41
HCPS BROWARD ELEM	400 WEST OSBORNE AVENUE	TAMPA	27	21	6
HCPS BRYAN ELEM	2006 WEST OAK AVENUE	PLANT CITY	84	36	48
HCPS BRYANT ELEM	13910 NINE EAGLES ROAD	TAMPA	16	7	9
HCPS BUCHANAN MIDDLE	1001 WEST BEARS AVENUE	TAMPA	2	2	0
HCPS BUCKHORN ELEM	2420 BUCKHORN SCHOOL CT	VALRICO	44	33	11
HCPS BURNETT MIDDLE	1010 NORTH KINGSWAY ROAD	SEFFNER	5	5	0
HCPS BURNEY ELEM	901 S. EVERS STREET	PLANT CITY	6	6	0
HCPS BURNS MIDDLE	615 BROOKER ROAD	BRANDON	11	11	0
HCPS CANNELLA ELEM	10707 NIXON ROAD	TAMPA	62	30	32
HCPS CARROLLWOOD ELEM	3516 MCFARLAND ROAD	TAMPA	9	0	9
HCPS CHIARAMONTE ELEM	6001 SOUTH HIMES AVENUE	TAMPA	28	18	10
HCPS CHILES ELEM	16541 TAMPA PALMS BOULEVARD W.	TAMPA	24	14	10
HCPS CIMINO ELEM	4329 CULBREATH ROAD	VALRICO	20	0	20
HCPS CITRUS PARK ELEM	7700 GUNN HWY	TAMPA	9	0	9
HCPS CLARK ELEM	19002 WOOD SAGE DRIVE	TAMPA	30	19	11
HCPS CLAYWELL ELEM	4500 NORTHDAL BLVD	TAMPA	27	6	21
HCPS COLLINS ELEM	12424 SUMMERFIELD BOULEVARD	RIVERVIEW	43	33	10
HCPS COLSON ELEM	1520 LAKEVIEW AVENUE	SEFFNER	51	41	10
HCPS CORK ELEM	3501 N. CORK ROAD	PLANT CITY	51	31	20
HCPS CORR ELEM	13020 KINGS LAKE DRIVE	GIBSONTON	61	40	21
HCPS CRESTWOOD ELEM	7824 NORTH MANHATTAN AVE	TAMPA	70	30	40
HCPS CYPRESS CREEK ELEM	4040 19TH AVENUE NE	RUSKIN	36	26	10
HCPS DAVIDSEN MIDDLE	10501 MONTAGUE STREET	TAMPA	9	9	0
HCPS DAVIS ELEM	10907 MEMORIAL HIGHWAY	TAMPA	39	20	19
HCPS DE SOTO ELEMENTARY	2628 CORRINE ST	TAMPA	10	0	10
HCPS DEER PARK ELEM	11605 CITRUS PARK DRIVE	TAMPA	16	6	10
HCPS DICKENSON ELEM	4720 KELLY ROAD	TAMPA	22	12	10
HCPS DOBY ELEM	6720 COVINGTON GARDEN DR	APOLLO BEACH	55	36	19

PROVIDER NAME	ADDRESS	CITY	CHILDREN SERVED		
			UNDUPLICATED TOTAL	SCHOOL READINESS	VPK
HCPS DOROTHY C. YORK PREK-8 MAGNET SCHOOL	5995 COVINGTON GARDEN DRIVE	APOLLO BEACH	38	18	20
HCPS DOVER ELEM	3035 NELSON AVENUE	DOVER	33	15	18
HCPS DR CARTER G WOODSON K-8 SCHOOL	8715 N 22ND ST	TAMPA	46	25	21
HCPS DUNBAR ELEM	1730 UNION STREET	TAMPA	31	31	0
HCPS EDISON ELEM	1607 EAST CURTIS STREET	TAMPA	42	42	0
HCPS EGYPT LAKE ELEM	6707 NORTH GLEN AVENUE	TAMPA	37	16	21
HCPS EISENHOWER MIDDLE	7620 OLD BIG BEND ROAD	GIBSONTON	9	9	0
HCPS ESSRIG ELEM	13131 LYNN ROAD	TAMPA	38	0	38
HCPS FARNELL MIDDLE	13912 NINE EAGLES DRIVE	TAMPA	1	1	0
HCPS FERRELL MIDDLE	4302 24TH STREET	TAMPA	3	3	0
HCPS FOLSOM ELEM	9855 HARNEY ROAD	THONOTOSASSA	33	23	10
HCPS FOREST HILLS ELEM	10112 N OLA AVE	TAMPA	53	42	11
HCPS FOSTER ELEM	2014 EAST DIANA STREET	TAMPA	11	0	11
HCPS FRANKLIN MIDDLE	3915 21ST. AVENUE	TAMPA	5	5	0
HCPS FROST ELEM	3950 FAULKENBURG ROAD	RIVERVIEW	28	0	28
HCPS GIBSONTON ELEM	7723 GIBSONTON DRIVE	GIBSONTON	23	13	10
HCPS GRADY ELEM	3910 W. MORRISON AVENUE	TAMPA	82	0	82
HCPS GRAHAM ELEM	2915 MASSACHUSETTS AVENUE	TAMPA	31	31	0
HCPS HAMMOND ELEM	8008 NORTH MOBLEY ROAD	ODESSA	23	3	20
HCPS HERITAGE ELEM	18201 EAST MEADOWS ROAD	TAMPA	38	0	38
HCPS HILL MIDDLE	5200 EHRLICH ROAD	TAMPA	1	1	0
HCPS HUNTER'S GREEN ELEM	9202 HIGHLAND OAK DRIVE	TAMPA	72	53	19
HCPS IPPOLITO ELEM	6874 S FALKENBURG RD	RIVERVIEW	10	0	10
HCPS JACKSON ELEM	502 EAST GILCHRIST ST.	PLANT CITY	40	30	10
HCPS JAMES ELEM	4302 EAST ELLICOTT STREET	TAMPA	39	39	0
HCPS KENLY ELEM	2909 66TH STREET	TAMPA	46	36	10
HCPS KENNETH E. ADUM PK-8 MAGNET	4210 W BAY VILLA AVE.	TAMPA	26	6	20
HCPS KINGSWOOD ELEM	3102 SOUTH KINGS AVENUE	BRANDON	8	0	8
HCPS KNIGHTS ELEM	4815 NORTH KEENE ROAD	PLANT CITY	29	9	20
HCPS LAKE MAGDALENE ELEM	2002 PINE LAKE DRIVE	TAMPA	30	0	30
HCPS LAMB ELEM	6274 S 78TH STREET	TAMPA	70	48	22
HCPS LANIER ELEM	4704 MONTGOMERY AVENUE	TAMPA	31	11	20
HCPS LEWIS ELEM	6700 EAST WHITEWAY DRIVE	TEMPLE TERR	60	40	20
HCPS LIBERTY MIDDLE	17400 COMMERCE PARK BLVD.	TAMPA	9	9	0
HCPS LINCOLN ELEM	1207 EAST RENFRO STREET	PLANT CITY	9	9	0
HCPS LOCKHART ELEM.	3719 NORTH 17TH STREET	TAMPA	46	46	0
HCPS LOMAX ELEM	4207 26TH STREET	TAMPA	44	35	9
HCPS LOPEZ ELEM	200 NORTH KINGSWAY ROAD	SEFFNER	76	55	21
HCPS LOWRY ELEM	11505 COUNTRY HOLLOW DRIVE	TAMPA	16	3	13
HCPS LUTZ ELEM	202 5TH AVENUE SE	LUTZ	21	11	10
HCPS MABRY ELEM	4201 ESTRELLA STREET	TAMPA	53	13	40
HCPS MACFARLANE ELEM	1721 NORTH MACDILL AVENUE	TAMPA	40	40	0
HCPS MANISCALCO ELEM	939 DEBUEL ROAD	LUTZ	16	9	7

PROVIDER NAME	ADDRESS	CITY	CHILDREN SERVED		
			UNDUPLICATED TOTAL	SCHOOL READINESS	VPK
HCPS MARTINEZ MIDDLE	5601 LUTZ LAKE FERN ROAD	LUTZ	2	2	0
HCPS MCDONALD ELEM	501 W. PRUETT ROAD	SEFFNER	39	31	8
HCPS MCKITRICK ELEM	5503 LUTZ LAKE FERN ROAD	LUTZ	17	7	10
HCPS MENDENHALL ELEM	5202 MENDENHALL DRIVE	TAMPA	19	8	11
HCPS MILES ELEM	317 E. 124TH AVENUE	TAMPA	47	36	11
HCPS MINTZ ELEM	1510 HEATHER LAKES BLVD	BRANDON	19	0	19
HCPS MORGAN WOODS ELEM	7001 ARMAND DRIVE	TAMPA	11	0	11
HCPS MORT ELEM	1806 BEARSS AVENUE	TAMPA	20	0	20
HCPS MULLER ELEM	13615 NORTH 22ND STREET	TAMPA	23	23	0
HCPS MULRENNAN MIDDLE	4215 DURANT ROAD	VALRICO	10	10	0
HCPS NELSON ELEM	5413 DURANT ROAD	DOVER	21	0	21
HCPS NORTHWEST ELEM	16438 HUTCHINSON ROAD	TAMPA	21	1	20
HCPS OAK GROVE ELEM	6315 N ARMENIA AVE	TAMPA	56	43	13
HCPS OAK PARK ELEM	2716 NORTH 46TH STREET	TAMPA	21	21	0
HCPS PALM RIVER ELEM	805 MAYDELL DRIVE	TAMPA	56	22	34
HCPS PINECREST ELEM	7950 LITHIA PINECREST RD	LITHIA	20	0	20
HCPS PIZZO ELEM	11701 USF BULL RUN DRIVE	TAMPA	31	0	31
HCPS PLANT CITY HIGH LITTLE SCHOOL	ONE RAIDER PLACE	PLANT CITY	7	0	7
HCPS POTTER ELEM	3224 EAST CAYUGA	TAMPA	39	39	0
HCPS PRIDE ELEM	10310 LION'S DEN DRIVE	TAMPA	55	44	11
HCPS PROGRESS VILLAGE MIDDLE MAGNET SCHOOL	8113 ZINNIA DRIVE	TAMPA	6	6	0
HCPS RAMPOLLO DOWNTOWN K-8TH	802 EAST WASHINGTON STREET	TAMPA	64	64	0
HCPS RANDALL MIDDLE	16510 FISHHAWK BOULEVARD	LITHIA	2	2	0
HCPS REDDICK ELEM	325 WEST LAKE DRIVE	WIMAUMA	28	12	16
HCPS RIVERHILLS ELEMENTARY MAGNET SCHOOL	405 RIVERHILLS DRIVE	TEMPLE TERRACE	21	0	21
HCPS RIVERVIEW ELEM	10809 HANNAWAY ROAD	RIVERVIEW	44	20	24
HCPS ROBINSON ELEM	4801 SOUTH TURKEY CREEK ROAD	PLANT CITY	49	29	20
HCPS ROBLES ELEM	4405 EAST SLIGH AVENUE	TAMPA	53	53	0
HCPS ROLAND PARK ELEM	1510 NORTH MANHATTAN AVENUE	TAMPA	25	25	0
HCPS ROOSEVELT ELEM	3205 FERDINAND AVE SOUTH	TAMPA	11	0	11
HCPS RUSKIN ELEM	101 EAST COLLEGE AVENUE	RUSKIN	95	45	50
HCPS SCHMIDT ELEM	1250 WILLIAMS ROAD	BRANDON	39	24	15
HCPS SCHWARZKOPF ELEM	18333 CALUSA TRACE BLVD	LUTZ	32	22	10
HCPS SEFFNER ELEM	109 CACTUS RD	SEFFNER	22	0	22
HCPS SEMINOLE ELEM	6201 CENTRAL AVENUE	TAMPA	30	20	10
HCPS SERGEANT PAUL R SMITH MIDDLE SCHOOL	14303 CITRUS POINTE DRIVE	TAMPA	8	8	0
HCPS SESSUMS ELEM	11525 RAMBLE CREEK DRIVE	RIVERVIEW	10	0	10
HCPS SHAW ELEM	11311 NORTH 15TH STREET	TAMPA	21	11	10
HCPS SHEEHY ELEM	6402 NORTH 40TH STREET	TAMPA	27	27	0
HCPS SHORE ELEM	1908 EAST 2ND AVENUE	TAMPA	70	36	34
HCPS SPRINGHEAD ELEM	3208 NESMITH ROAD	PLANT CITY	20	20	0

PROVIDER NAME	ADDRESS	CITY	CHILDREN SERVED		
			UNDUPLICATED TOTAL	SCHOOL READINESS	VPK
HCPS STEWART MIDDLE	1125 SPRUCE STREET	TAMPA	6	6	0
HCPS STOWERS ELEM	13915 BARRINGTON STOWERS DRIVE	LITHIA	10	0	10
HCPS SUMMERFIELD CROSSINGS ELEM	11050 FAIRWAY MEADOW DRIVE	RIVERVIEW	10	0	10
HCPS SUMMERFIELD ELEM	11990 BIG BEND ROAD	RIVERVIEW	11	0	11
HCPS SYMMES ELEM	6280 WATSON ROAD	RIVERVIEW	21	0	21
HCPS TAMPA BAY BLVD ELEM	3111 TAMPA BAY BLVD	TAMPA	32	22	10
HCPS TAMPA HEIGHTS ELEM	305 E COLUMBUS DR	TAMPA	17	17	0
HCPS TAMPA PALMS ELEM	6100 TAMPA PALMS BLVD	TAMPA	11	0	11
HCPS TEMPLE TERRACE ELEM	124 FLOTTO AVENUE	TEMPLE TERR	100	65	35
HCPS THOMPSON ELEM	2020 E. SHELL POINT RD.	RUSKIN	77	67	10
HCPS THONOTOSASSA ELEM	10050 SKEW LEE ROAD	THONOTOSASSA	9	9	0
HCPS TINKER ELEM	8207 TINKER STREET	MACDILL AFB	30	0	30
HCPS TOMLIN MIDDLE	501 NORTH WOODROW WILSON ST.	PLANT CITY	4	4	0
HCPS TOWN AND COUNTRY ELEM	6025 HANLEY RD	TAMPA	17	0	17
HCPS TRAPNELL ELEM	1605 WEST TRAPNELL S	PLANT CITY	33	33	0
HCPS TURKEY CREEK MIDDLE	5005 SOUTH TURKEY CREEK ROAD	PLANT CITY	1	1	0
HCPS TURNER-BARTELS K-8	9190 IMPERIAL OAK BOULEVARD	TAMPA	39	22	17
HCPS TWIN LAKES ELEM	8507 N HABANA AVENUE	TAMPA	9	0	9
HCPS VALRICO ELEM	609 SOUTH MILLER ROAD	VALRICO	19	0	19
HCPS WALDEN LAKE ELEM	2800 TURKEY CREEK ROAD	PLANT CITY	35	22	13
HCPS WALKER MIDDLE	8282 NORTH MOBLEY ROAD	ODESSA	1	1	0
HCPS WARREN HOPE DAWSON ELEM	12961 BOGGY CREEK DRIVE	RIVERVIEW	16	0	16
HCPS WASHINGTON ELEM	1407 E. ESTELLE STREET	TAMPA	23	23	0
HCPS WEST SHORE ELEM	7110 SOUTH WEST SHORE BLVD	TAMPA	59	30	29
HCPS WEST TAMPA ELEM	2700 WEST CHERRY STREET	TAMPA	38	26	12
HCPS WESTCHASE ELEM	9517 WEST LINEBAUGH AVENUE	TAMPA	23	13	10
HCPS WILLIAMS MIDDLE	5020 NORTH 47TH STREET	TAMPA	17	17	0
HCPS WILSON ELEM	702 ENGLISH STREET	PLANT CITY	38	28	10
HCPS WILSON MIDDLE	1005 SWANN AVENUE	TAMPA	3	3	0
HCPS WIMAUMA ELEM	5709 HICKMAN	WIMAUMA	68	42	26
HCPS WITTER ELEM	10801 NORTH 22ND STREET	TAMPA	49	39	10
HCPS WOODBRIDGE ELEM	8301 WOODBRIDGE BLVD	TAMPA	39	25	14
HCPS YATES ELEM	301 KINGSWAY ROAD	BRANDON	45	25	20
HCPS YOUNG MIDDLE	1807 E.MARTIN LUTHER KING BLVD	TAMPA	1	1	0
HEAVEN SENT DAYCARE OF BRANDON, INC.	3003 S KINGS AVE	BRANDON	42	35	11
HEAVENLY ANGEL'S CHILDCARE	11207 CARRICK STONE ST	WIMAUMA	2	2	0
HEAVENLY ANGELS FAMILY CHILD CARE HOME	1502 HEATHER AVE	TAMPA	10	10	0
HEBREW ACADEMY	14908 PENNINGTON RD	TAMPA	12	4	9
HELPING HAND DAY NURSERY INC. II	6406 N 43RD STREET	TAMPA	86	82	11
HELPING HAND DAY NURSERY IV	12535 TINSLEY CIR	TAMPA	5	5	0
HERE WE GROW LEARNING CENTER	1211 WISHING WELL WAY	TAMPA	106	104	10

PROVIDER NAME	ADDRESS	CITY	CHILDREN SERVED		
			UNDUPLICATED TOTAL	SCHOOL READINESS	VPK
HIGH 5 INC AT BEVIS	5720 OSPREY RIDGE DR	LITHIA	10	10	0
HIGH 5 INC AT BROOKER	812 DEWOLF RD.	BRANDON	26	26	0
HIGH 5 INC AT CIMINO	4329 CULBREATH RD.	VALRICO	17	17	0
HIGH 5 INC AT FISHHAWK CREEK	16815 DORMAN RD	LITHIA	13	13	0
HIGH 5 INC AT KINGSWOOD	3102 S KINGS AVE	BRANDON	37	37	0
HIGH 5 INC AT LITHIA SPRINGS	4332 LYNX PAW TRL	VALRICO	8	8	0
HIGH 5 INC AT MINTZ	1510 HEATHER LAKES BLVD.	BRANDON	46	46	0
HIGH 5 INC AT STOWERS	13915 BARRINGTON STOWERS DR	LITHIA	15	15	0
HIGH 5 INC.	405 BEVERLY BLVD	BRANDON	26	26	0
HIGH 5 INC. AT SYMMES	6280 WATSON RD	RIVERVIEW	21	21	0
HIGHER CALLING LEARNING ACADEMY INC.	808 E OKALOOSA AVE	TAMPA	62	56	8
HILLEL ACADEMY	2020 W FLETCHER AVE	TAMPA	23	0	23
HILLSBOROUGH BAPTIST SCHOOL, INC.	6021 WILLIAMS RD	SEFFNER	52	40	18
HILLSBOROUGH COMMUNITY COLLEGE YBOR CHILD DEVELOPMENT CENTER	1505 E PALM AVE	TAMPA	34	17	20
HILLSDALE PRESCHOOL & ACADEMY	6201 EHRlich RD	TAMPA	32	0	32
HOLY TRINITY LUTHERAN SCHOOL	3712 W EL PRADO BLVD	TAMPA	53	0	53
HOME AWAY FROM HOME LEARNING CENTER 1	3002 S 78TH ST	TAMPA	49	49	0
HOME OF THE RAINBOWS CHILD DAY CARE	6820 W POCAHONTAS AVE	TAMPA	2	2	0
IDAIVI MEDEROS-HERNANDEZ FAMILY DAY CARE HOME	4528 W CLIFTON ST	TAMPA	3	3	0
IDARME FAMILY CHILD CARE HOME LLC	2801 W ROBSON ST	TAMPA	2	2	0
ILEANA CHILDCARE INC	8334 W FOREST CIR	TAMPA	9	9	0
IMMANUEL LUTHERAN PRESCHOOL	2913 JOHN MOORE RD	BRANDON	15	0	15
INCARNATION CATHOLIC SCHOOL	5111 WEBB RD	TAMPA	20	0	20
INFINITY HOUSE OF LOVE	1806 E 115TH AVE	TAMPA	10	10	0
IRMA TAMAYO FAMILY DAY CARE HOME	2110 W HERMAN ST	TAMPA	1	1	0
ISLAND GIRL FAMILY CHILDCARE LLC	4102 N 20TH ST	TAMPA	2	2	0
ISTABA PEACE ACADEMY	7326 E SLIGH AVE	TAMPA	76	22	59
IVONNE PAEZ-HERNANDEZ LARGE FAMILY CHILD CARE HOME	7208 N GRADY AVE	TAMPA	2	2	0
JAC'S CHILDCARE CENTER	1005 W BLOOMINGDALE AVE	BRANDON	11	11	0
JAMESENA MURDOCK FAMILY DAY CARE HOME	1520 E 26TH AVE	TAMPA	5	5	0
JEANETTE BUTLER FAMILY DAY CARE HOME	10029 MERRY FAWN COURT	SUN CITY CENTER	7	7	0
JENNIFER ANDERSON LARGE FAMILY CHILD CARE HOME	2434 WISHING WELL CIR	TAMPA	37	37	0
JERIANNE GONZALEZ CHILD CARE HOME LLC	8421 WOODHURST DR	TAMPA	6	6	0
JEWISH COMMUNITY CENTER PRESCHOOL	13013 COMMUNITY CAMPUS DR	TAMPA	16	0	16

PROVIDER NAME	ADDRESS	CITY	CHILDREN SERVED		
			UNDUPLICATED TOTAL	SCHOOL READINESS	VPK
JOHN GOODWIN FAMILY DAY CARE HOME	407 W SADIE ST APT B	BRANDON	10	10	0
JORDAN FAMILY DAY CARE HOME	1321 FOXBORO DR	BRANDON	4	4	0
JOYAS DEL FUTURO ACADEMY INC	7501 N HIMES AVE	TAMPA	75	65	21
JOYCE FINLEY FAMILY DAY CARE HOME	4116 W GRACE ST	TAMPA	4	4	0
JUGANDO APRENDEMOS CHILD CARE BILINGUAL LLC	1103 CLASSIC DR	VALRICO	3	3	0
JUNE JONES FAMILY DAY CARE HOME	3221 N. 47TH STREET	TAMPA	12	9	6
JUST FOR TOTS ACADEMY	4417 N LOIS AVE	TAMPA	88	62	39
KATIANA SANTOS FAMILY DAY CARE HOME	2138 W JUNEAU ST	TAMPA	2	2	0
KATY'S KID CAVE LLC	8333 FOUNTAIN AVE	TAMPA	8	8	0
KENDRA HUNDLEY FAMILY DAY CARE HOME	6420 GONDOLA DR	RIVERVIEW	3	3	0
KEYSTONE CHILDREN'S ACADEMY	8643 GUNN HWY	ODESSA	74	53	22
KEYSTONE CHRISTIAN PRESCHOOL	16301 RACE TRACK RD	ODESSA	19	0	19
KID CITY USA PLANT CITY	105 THRASHER RD	PLANT CITY	44	35	13
KID CITY USA RIVERVIEW	11329 BIG BEND RD	RIVERVIEW	126	112	25
KIDDIE ACADEMY OF BLOOMINGDALE	1283 BLOOMINGDALE AVE	VALRICO	78	44	46
KIDDIE ACADEMY OF CARROLLWOOD	15320 CASEY RD	TAMPA	78	68	23
KIDDIE ACADEMY OF WESTCHASE	12101 W HILLSBOROUGH AVE	TAMPA	56	25	32
KIDDIE CAMPUS UNIVERSITY	111 MYRTLE RIDGE RD	LUTZ	135	119	33
KIDDIE CITY DAYCARE	5560 PENTAIL CIR	TAMPA	2	2	0
KIDDIE COUNTRY INC.	5301 MEMORIAL HWY	TAMPA	12	0	12
KIDDIE KOLLEGE 4 U LLC	2236 E 113TH AVE	TAMPA	8	8	0
KIDDIE KOLLEGE DAY CARE	4319 W FAIR OAKS AVE	TAMPA	18	0	18
KIDD'S R US FAMILY CHILD CARE, LLC	1907 E BOUGAINVILLEA AVE	TAMPA	19	19	0
KIDDY KORNER FAMILY CHILD CARE	1612 E OSBORNE AVE	TAMPA	7	7	0
KIDLIFE PRESCHOOL	1511 S US HIGHWAY 301	TAMPA	69	69	0
KIDLIFE PRESCHOOL	1511 SOUTH US 301	TAMPA	68	54	18
KIDS CLUB EARLY LEARNING CENTER LLC	608 N ALEXANDER ST	PLANT CITY	77	69	10
KID'S COMMUNITY COLLEGE	10550 JOHANNA AVE	RIVERVIEW	49	38	17
KID'S COMMUNITY COLLEGE RIVERVIEW SOUTH PRESCHOOL	10030 MATHOG RD	RIVERVIEW	68	35	39
KIDS CORNER	5511 N. 40TH STREET	TAMPA	232	224	14
KIDS CORNER ACADEMY	3401 W COLUMBUS DR	TAMPA	53	41	18
KIDS COVE LEARNING ACADEMY	12010 BALM RIVERVIEW RD	RIVERVIEW	164	123	62
KIDS FOREVER CHILDCARE	4540 W HENRY AVE	TAMPA	8	8	0
KIDS PARADISE	14502 MARKLAND GREENS PL	TAMPA	3	3	0
KIDS R IN US	6408 WALTON WAY	TAMPA	15	15	0
KIDS R KIDS #15	5815 KIDS CROSSING DR	LITHIA	42	0	42
KIDS R KIDS SOUTHSORE	13151 KINGS LAKE DR	GIBSONTON	106	0	106
KIDS R KIDS WATERSET	6406 COVINGTON GARDEN DR	APOLLO BEACH	108	0	108
KIDS R TOPS	215 KINGSWAY RD	BRANDON	110	92	30

PROVIDER NAME	ADDRESS	CITY	CHILDREN SERVED		
			UNDUPLICATED TOTAL	SCHOOL READINESS	VPK
KIDS WONDERLAND	6326 FROST DR	TAMPA	3	3	0
KIDS ZONE LEARNING CENTER	6432 W LINEBAUGH AVE	TAMPA	52	52	0
KIDZ 1ST CHOICE DAYCARE LLC	7402 N 56TH ST STE 200	TAMPA	44	44	0
KIDZ CARE ACADEMY	4936 NORTHDALDA BLVD	TAMPA	14	6	8
KIDZ CLUB ACADEMY INC	1202 E SHELLPOINT RD	RUSKIN	63	63	0
KIDZ CLUB AFTERSCHOOL	1377 PROVIDENCE RD	BRANDON	17	17	0
KIDZ IN PLAY CHILDCARE CENTER 2	4201 E OSBORNE AVE	TAMPA	72	71	7
KIDZ PLANET	606 E WINDHORST RD	BRANDON	138	127	16
KINDERCARE LEARNING CENTER #1138 PREMIERE	15609 PREMIERE DR	TAMPA	48	45	8
KINDERCARE LEARNING CENTER #1139 BELL SHOALS	4304 BELL SHOALS RD	VALRICO	97	87	15
KINDERCARE LEARNING CENTER #30087 GUNN HWY	4250 GUNN HWY	TAMPA	56	50	11
KINDERCARE LEARNING CENTER 1254	11501 N 53RD ST	TEMPLE TERR	128	119	27
KINDERCARE LEARNING CENTER PARSONS	2524 S PARSONS AVE	SEFFNER	104	104	0
KINDERCARE LEARNING CENTER TIMBERLANE	1701 W TIMBERLANE DR	PLANT CITY	80	72	14
KINDERCARE LEARNING CENTERS LLC	4934 WEBB RD	TAMPA	62	62	0
KINGDOM KIDS LEARNING CENTER OF TAMPA, LLC	2200 LADYWOOD CT	BRANDON	8	8	0
KINGDOM KIDS LEARNING CENTER OF TAMPA, LLC	4922 S 84TH ST	TAMPA	22	22	0
KINGS AVENUE CHRISTIAN PRESCHOOL	2602 S KINGS AVE	BRANDON	38	38	0
KING'S KIDS CHRISTIAN ACADEMY OF TAMPA INC	3000 N 34TH ST	TAMPA	66	58	14
KINGS TOTALLY KIDS LLC	9601 KINGSBURGH CT	TAMPA	6	6	0
KINGZ KIDZ CHRISTIAN PRESCHOOL	2908 BELL SHOALS RD	BRANDON	29	24	7
KINOVU SCHOOL OF LITHIA	3105 LITHIA PINECREST RD	VALRICO	1	1	0
KINOVU SCHOOL OF LYNWOOD	5063 WHITE CHICORY DR	APOLLO BEACH	15	15	0
KINOVU SCHOOL OF SEFFNER	11002 E BROADWAY AVE	SEFFNER	13	13	0
KRESTVIEW KID'S ACADEMY LLC	11425 BALM RIVERVIEW RD	RIVERVIEW	14	0	14
LA PETITE ACADEMY BLOOMINGDALE	808 W BLOOMINGDALE AVE	BRANDON	120	111	18
LA PETITE ACADEMY CRISTINA	10025 CRISTINA DR	RIVERVIEW	169	158	23
LA PETITE ACADEMY GREENHOLLOW	1011 GREENHOLLOW LN	VALRICO	83	69	17
LA PETITE ACADEMY HUMPHREY	3818 W HUMPHREY ST	TAMPA	152	132	28
LA PETITE ACADEMY MAPLEDALE	15707 MAPLEDALE DR	TAMPA	78	57	24
LA PETITE ACADEMY PAULA	7511 PAULA DR	TAMPA	142	120	36
LA PETITE ACADEMY REGENTS PARK	9005 REGENTS PARK DR	TAMPA	146	133	23
LA PETITE ACADEMY SOUTH VILLAGE	13502 S VILLAGE DR	TAMPA	67	49	22
LADYBIRD ACADEMY OF FISHHAWK	16470 HAMMOCK CROSSING DR	LITHIA	38	0	38
LAKA CHILDCARE LLC	4701 N 15TH ST	TAMPA	93	90	6
LAKE MAGDALENE CHRISTIAN SCHOOL	2902 W FLETCHER AVE	TAMPA	54	0	54
LAND OF LEARNING ACADEMY	8809 W ROBSON ST	TAMPA	117	75	58
LASHAN EVERETT FAMILY DAY CARE HOME	3420 SAND DUNE LN	TAMPA	6	6	0

PROVIDER NAME	ADDRESS	CITY	CHILDREN SERVED		
			UNDUPLICATED TOTAL	SCHOOL READINESS	VPK
LATONYA CAMPBELL FAMILY DAY CARE HOME	203 W BOUGAINVILLEA AVE	TAMPA	11	11	0
LATOYA JONES FAMILY DAY CARE HOME	10220 GEESE TRAIL CIR	SUN CITY CTR	16	16	0
LAUNCHPAD LEARNING CENTER INC.	1405 S. SAINT CLOUD AVE	VALRICO	35	25	13
LEARN & GROW PRE-SCHOOL CORP.	2501 DURANT RD	VALRICO	11	0	11
LEARNING GATE PRESCHOOL AND AFTERCARE	16331 HANNA RD	LUTZ	6	0	6
LENA PELAEZ-MACKLEM FAMILY DAY CARE HOME	217 W SENECA AVE	TAMPA	2	2	0
LESYANE CABRERA-HERNANDEZ FAMILY DAY CARE HOME	8917 SABODA CT	TAMPA	1	1	0
LG LEARNING EXPRESS LLC	10302 N NEBRASKA AVE	TAMPA	34	34	0
LIBERTY CHRISTIAN SCHOOL	2505 W GRANFIELD AVE	PLANT CITY	13	0	13
LIFE IN CHRIST SUSAN F. SCANNON CHRISTIAN LEARNING CENTER	9612 N 26TH ST	TAMPA	30	26	8
LIL EXPLORERS CHRISTIAN ACADEMY INC.	301 E ALSOBROOK ST	PLANT CITY	151	151	0
LIL MUNCHKINS LEARNING CENTER INC	702 S EVERS ST	PLANT CITY	110	110	0
LIL PALS	1010 S 76TH ST	TAMPA	56	50	11
LIL TOTS' LEARNING CENTER LLC	3042 S 78TH ST	TAMPA	62	62	0
LILISDEY MENDEZ DORTA FAMILY DAY CARE HOME	11019 AIRVIEW DR	TAMPA	1	1	0
LILY'S DAYCARE LLC	4544 W FERN ST	TAMPA	11	11	0
LIMONA VILLAGE CHAPEL CHILDREN'S CENTER	408 LIMONA RD	BRANDON	28	0	28
LINDA'S DAY CARE CENTER	3402 E 32ND AVE	TAMPA	18	18	0
LINDA'S LITTLE PEOPLE, INC.	1406 N WHEELER ST	PLANT CITY	42	42	0
LISHIA MCCALISTER FAMILY DAY CARE HOME	8711 RUTH PL	TAMPA	3	3	0
LISSANDRA LUIS-FELIPE FAMILY DAY CARE HOME	3208 FOX LAKE DR	TAMPA	1	1	0
LITTLE ACHIEVERS DAYCARE LLC	18268 N US HIGHWAY 41	LUTZ	32	27	6
LITTLE ANGELS ACADEMY OF TAMPA LLC	1506 WISHING WELL WAY	TAMPA	7	2	6
LITTLE ANGELS FCCH LLC	2817 W MARQUETTE AVE	TAMPA	3	3	0
LITTLE BUILDERS OF THE FUTURE LLC	7018 W POCAHONTAS AVE	TAMPA	1	1	0
LITTLE EAGLES ACADEMY OF NORTH TAMPA	1251 E FOWLER AVE STE A	TAMPA	11	1	11
LITTLE EAGLES CHRISTIAN PRESCHOOL	2801 E 17TH AVE	TAMPA	11	11	0
LITTLE GIANTS LEARNING ACADEMY NORTH	10891 HACKNEY DR	RIVERVIEW	142	111	43
LITTLE GIANTS LEARNING ACADEMY SOUTH	13250 US 301 S	RIVERVIEW	163	129	44
LITTLE HEARTS HAPPY FEET CHILD CARE LLC	14009 N 20TH ST	TAMPA	18	13	6
LITTLE HOUSE KINDER LEARNING CENTER	6333 MEMORIAL HWY	TAMPA	63	49	20
LITTLE LEARNER'S ACADEMY OF TAMPA PHASE II	5240 E SLIGH AVE	TAMPA	119	119	0

PROVIDER NAME	ADDRESS	CITY	CHILDREN SERVED		
			UNDUPLICATED TOTAL	SCHOOL READINESS	VPK
LITTLE STEPS LEARNING ACADEMY	8325 N PACKWOOD AVE	TAMPA	86	86	0
LITTLE TEAM LEARNING ACADEMY	6929 N MANHATTAN AVE	TAMPA	85	85	0
LITTLE TOTS BUILDING BLOCKS ACADEMY INC	812 MAYDELL DR	TAMPA	70	70	0
LITTLE WONDERS FAMILY CHILD CARE CENTER	10923 N LANTANA AVE	TAMPA	5	5	0
LITTLE WONDERS LEARNING CENTER	7916 N HIMES AVE	TAMPA	32	16	19
LITTLE'S SMILE ACADEMY INC	15708 COUNTRY LAKE DR	TAMPA	2	2	0
LIURIS VEITIA-CHAVIANO LARGE FAMILY CHILD CARE HOME	4932 ROCKLEDGE CIR	TAMPA	7	7	0
LIZET ALFONSO-ALVAREZ FAMILY DAY CARE HOME	7915 WOODGLEN CIR	TAMPA	6	6	0
LOLA'S CHILD CARE CENTER, INC.	4017 N 34TH ST	TAMPA	59	59	0
LOS ZAPATICOS DE ROSA LLC	3108 W LEROY ST	TAMPA	2	2	0
LOVE & GLORY LEARNING CENTER INC.	4911 N 42ND STREET	TAMPA	71	69	11
LUTZ LEARNING CENTER, INC.	621 SUNSET LN	LUTZ	23	0	23
LUTZ MONTESSORI SCHOOL LLC	5604 W LUTZ LAKE FERN RD	LUTZ	25	0	25
LUTZ PRE-PREP	17951 N US HIGHWAY 41	LUTZ	88	0	88
MAGALY'S CHILD CARE LLC	4247 W NOME ST	TAMPA	1	1	0
MAGDA VALVERDE FAMILY DAY CARE HOME	7504 BRIGHTEN DR	TAMPA	9	0	9
MAGGIE DRUMMER FAMILY DAY CARE HOME	8323 BAHIA AVE	TAMPA	3	3	0
MANIFESTATIONS EARLY CHILDCARE CENTER	3102 E LAKE AVE	TAMPA	139	134	14
MANIFESTATIONS EARLY CHILDCARE CENTER EAST	2709 N 34TH ST	TAMPA	7	7	0
MARA'S HOME DAYCARE LLC	12407 N OAKLEAF AVE	TAMPA	3	3	0
MARGARET BLAIR FAMILY DAY CARE HOME	1611 HARTLEY RD	TAMPA	7	7	0
MARIA CABRERA FAMILY DAY CARE HOME	6425 AMUNDSON STREET	TAMPA	3	3	0
MARIA CARRILLO LARGE FAMILY CHILD CARE HOME	10909 RIVERVIEW DR	RIVERVIEW	18	15	7
MARIA NUNEZ FAMILY DAY CARE HOME	6025 MORNAY DR	TAMPA	3	3	0
MARIA PEREZ-VALDES FAMILY DAY CARE HOME	7007 LAMBRIGHT CT	TAMPA	2	2	0
MARIA'S LEARNING SUCCESS LLC	7706 W CLIFTON ST	TAMPA	13	3	13
MARIE JACKSON FAMILY DAY CARE HOME	1101 S 58TH ST	TAMPA	7	7	0
MARILIN RICARDO FAMILY DAY CARE HOME	7206 N HOWARD AVE	TAMPA	3	3	0
MARILYN WILLIAMS FAMILY DAY CARE HOME	1511 E. NEW ORLEANS AVENUE	TAMPA	11	11	0
MARITZA FAMILY DAYCARE INC	9507 PEMBRIDGE CT	TAMPA	2	2	0
MARK OF EXCELLENCE ACADEMY, LLC	1905 LENNA AVE	SEFFNER	42	37	11
MARQUILA CHARLES FAMILY DAY CARE HOME	1013 E 12TH AVE	TAMPA	11	11	0
MARTA'S CHILD CARE, LLC	2522 W CORDELIA ST	TAMPA	1	1	0

PROVIDER NAME	ADDRESS	CITY	CHILDREN SERVED		
			UNDUPLICATED TOTAL	SCHOOL READINESS	VPK
MARTÍNEZ FAMILY DAY CARE HOME	2122 W HANNA AVE	TAMPA	6	6	0
MARY GO ROUND CHILD CARE CENTER, INC.	10810 HANNAWAY DR	RIVERVIEW	33	16	18
MARY GO ROUND SOUTH POINTE	10615 SOUTHERN POINTE BLVD	RIVERVIEW	67	13	58
MAUREEN ALEXIS FAMILY DAY CARE HOME	12305 N TALIAFERRO AVE	TAMPA	3	3	0
MAYLIS FAMILY HOME DAYCARE	518 DONNA DR	BRANDON	3	3	0
MCMILLAN FAMILY DAY CARE HOME	4009 N 27TH ST	TAMPA	5	5	0
MELODY MAKERS KIDZ FAMILY CHILDCARE HOME	1440 FOXBORO DR	BRANDON	9	9	0
MENENDEZ FAMILY CHILDCARE	7205 BEASLEY RD	TAMPA	4	4	0
MESSIAH LUTHERAN CHURCH PRESCHOOL	14920 HUTCHISON RD	TAMPA	14	0	14
MICHELLE A GUERRA, FAMILY DAYCARE HOME	10207 TAKOMAH TRL	TAMPA	5	5	0
MICHELLE NOWELL FAMILY DAY CARE HOME	410 E HAMILTON AVE	TAMPA	1	1	0
MICHELLE ROSALES-GOODWIN FAMILY DAY CARE HOME	407 W SADIE ST APT A	BRANDON	10	10	0
MILESTONE ACADEMY LLC	8801 N 78TH ST	TEMPLE TERR	83	79	12
MIMI'S DAYCARE	1415 W YUKON ST	TAMPA	8	8	0
MINNIE MOUSE FAMILY HOME CHILDCARE LLC	7510 CAROLTON CIR	TAMPA	11	11	0
MIRACLE ACADEMY FAMILY CHILDCARE HOME	3819 BEECHWOOD BLVD	TAMPA	1	1	0
MIRTHA DIAZ-DELGADO FAMILY DAY CARE HOME	4537 W HENRY AVENUE	TAMPA	6	6	0
MISLEISY DAY CARE LLC	4912 N ARRAWANA AVE	TAMPA	2	2	0
MOFFITT CHILD DEVELOPMENT CENTER	10950 MCKINLEY DR	TAMPA	20	0	20
MONTESSORI EARLY LEARNING CTR	3823 HUDSON LN	TAMPA	22	3	21
MONTESSORI EARLY LEARNING CTR	3823 HUDSON LN	TAMPA	19	3	18
MORAIMA GARCIA FAMILY DAY CARE HOME	6204 N HUBERT AVE	TAMPA	2	2	0
MORNING GLORY ACADEMY	6001 CHRISTY LN	RIVERVIEW	105	83	32
MOTHER GOOSE PRESCHOOL	3407 N HABANA AVE	TAMPA	37	37	0
MOUNT CALVARY SEVENTH DAY ADVENTIST SCH	3111 E WILDER AVE	TAMPA	36	36	0
MY ADVENTURE ACADEMY L.L.C.	2828 W KIRBY ST	TAMPA	18	10	10
MY BLUE STAR CORP.	3003 W ROBSON ST	TAMPA	6	6	0
MY CARROUSELL FAMILY DAY CARE HOME	14502 FARM HILLS PL	TAMPA	13	13	0
MY HAPPY HOUSE, LLC	7005 FERN CT	TAMPA	8	8	0
MY LITTLE GIANT'S CHILDCARE LLC	3618 E OSBORNE AVE	TAMPA	12	12	0
MY LITTLE GIANTS DAY SCHOOL	6503 N HIMES AVE	TAMPA	37	32	17
MY LITTLE GIANTS DAY SCHOOL	2828 W KIRBY ST	TAMPA	8	8	0
MY LITTLE SUNSHINE IN HOME DAYCARE LLC	8211 GREENLEAF CIRCLE	TAMPA	5	5	0
MZ ZANDRAS FAMILY DAYCARE LLC	7910 ALLAMANDA AVE	TAMPA	6	6	0
NANA'S LEARNING POST	3709 CASABA LOOP	VALRICO	7	2	5
NELLY'S HAPPY CHILDHOOD	6405 BROOK HOLLOW CT	TAMPA	7	7	0

PROVIDER NAME	ADDRESS	CITY	CHILDREN SERVED		
			UNDUPLICATED TOTAL	SCHOOL READINESS	VPK
NELSIE'S DAY CARE LEARNING CENTER LLC	2708 N BOULEVARD	TAMPA	23	23	0
NEOMIS FAMILY HOME CHILD CARE CORPORATION	9216 N 13TH ST	TAMPA	53	53	0
NEREYDA SASTRE- HERNANDEZ FAMILY DAY CARE HOME	6916 DIMARCO RD	TAMPA	2	2	0
NEW HEAVEN LEARNING CENTER LLC	16246 SAGEBRUSH ROAD	TAMPA	23	21	6
NEW HOPE EARLY LEARNING	120 N KNIGHTS AVE	BRANDON	20	0	20
NEW JERUSALEM CHRISTIAN ACADEMY	3101 S KINGSWAY RD	SEFFNER	27	9	21
NEXT GENERATION KIDZ EARLY CHILDHOOD LEARNING CENTER 2 INC	3211 SANCHEZ ST	TAMPA	65	65	0
NEXT GENERATION KIDZ EARLY CHILDHOOD LEARNING CENTER 3 INC	6815 E 21ST AVE	TAMPA	42	42	0
NEXT GENERATION KIDZ EARLY CHILDHOOD LEARNING INC	1207 E JUNEAU ST	TAMPA	32	32	0
NEXT JEN'ERATION KIDS ACADEMY LLC	410 S COLLINS ST	PLANT CITY	54	54	0
NICOLE'S ACADEMY OF EXCELLENCY LLC	311 DOWN PINE DR	SEFFNER	25	25	0
NORTH TAMPA CHRISTIAN ACADEMY EXPLORERS, INC	5585 E COUNTY LINE RD	WESLEY CHAPEL	45	6	41
NORTHDALIE CHRISTIAN ACADEMY	15709 MAPLEDALE BLVD	TAMPA	8	0	8
NURTURED SPROUTS CHILDCARE LLC	2117 W KIRBY ST	TAMPA	14	14	0
O2B KIDS CEDARBROOK	13006 WILLOW GROVE DR	RIVERVIEW	78	42	41
O2B KIDS RIVERVIEW	11616 BOYETTE RD	RIVERVIEW	144	110	46
O2B KIDS SOUTH CREEK	10471 ALDER GREEN DR	RIVERVIEW	147	106	63
O2B KIDS SOUTH TAMPA	3202 W GANDY BLVD	TAMPA	85	60	31
O2B KIDS SOUTH WESTSHORE	4302 W EUCLID AVE	TAMPA	51	29	24
ODALI'S HOME DAYCARE INC	9503 BAYTREE CT	TAMPA	1	1	0
OLGA'S FAMILY CHILD CARE	6819 N CLEARVIEW AVE	TAMPA	8	8	0
OPEN ARMS LEARNING CENTER INC.	1217 BARMERE LN	BRANDON	1	1	0
PALM RIVER EARLY CDFCC	1815 CADILLAC CIR FL 33619	TAMPA	58	58	0
PALMA CEIA ACADEMY, INC.	4230 HENDERSON BLVD	TAMPA	28	18	14
PALMA CEIA METHODIST CHURCH, INC.	3723 W BAY TO BAY BLVD	TAMPA	26	0	26
PAMELA WILLIAMS FAMILY DAY CARE HOME	706 E MADISON ST	PLANT CITY	3	3	0
PANDA HUGS ACADEMY	15051 BRUCE B DOWNS BLVD	TAMPA	148	111	51
PARADISE LEARNING CENTER	5605 N LINCOLN AVE	TAMPA	57	41	20
PARADISE LEARNING CENTER II	1205 W. HILLSBOROUGH AVE	TAMPA	67	52	22
PARADISE LEARNING CENTER III	820 W DR. MLK BLVD	TAMPA	59	49	20
PARADISE LEARNING CENTER IV	8012 N ARMENIA AVE	TAMPA	51	34	22
PARADISE LEARNING CENTER V	6704 N. HIMES AVENUE	TAMPA	109	90	31
PAULA LONDONO LARGE FAMILY CHILD CARE HOME	6530 SPANISH MOSS CIR	TAMPA	1	1	0
PINECREST MIRNIA'S ACADEMY	6605 N HALE AVE	TAMPA	71	59	20
PINOCCHIO LEARNING CENTER INC	3303 W SAINT LOUIS ST	TAMPA	40	28	13

PROVIDER NAME	ADDRESS	CITY	CHILDREN SERVED		
			UNDUPLICATED TOTAL	SCHOOL READINESS	VPK
PIT STOP 4 KIDS AFTER SCHOOL PROGRAM, INC.	11207 US HIGHWAY 301 S	RIVERVIEW	115	83	34
PLANET CHILDREN CARE HOME INC	1423 W MEADOWBROOK AVE	TAMPA	1	1	0
PLANT CITY EARLY LEARNING ACADEMY	503 N PALMER ST	PLANT CITY	101	71	37
PLANT CITY LEARNING CENTER	651 E ALEXANDER ST	PLANT CITY	115	107	18
PLANT CITY LEARNING CENTER INC	651 E ALEXANDER ST	PLANT CITY	127	120	17
PLATO ACADEMY PRESCHOOL TAMPA	7705 GUNN HWY	TAMPA	10	5	5
PLAY 'N LEARN CHILDREN'S DEVELOPMENT CENTER LLC	14706 N BOULEVARD	TAMPA	71	62	16
PLAYTIME LEARNING ACADEMY	4701 EHRlich RD	TAMPA	88	24	68
PLAYWORLD ACADEMY LLC	5002A W LINEBAUGH AVE STE A	TAMPA	31	31	0
POST SUNSHINE RANCH	1350 JOHN MOORE RD	BRANDON	21	6	15
PRECIOUS DAVIS LARGE FAMILY CHILD CARE HOME	1110 FERLITA WAY	TAMPA	10	7	5
PRECIOUS GEMS ACADEMY INC.	736 MARTIN LUTHER KING BLVD	SEFFNER	93	84	16
PRECIOUS ONES LEARNING CENTER	5810 N HALE AVE	TAMPA	27	27	0
PREMIER ACADEMY OF TEMPLE TERRACE LLC	12420 TELECOM DR	TEMPLE TERR	52	16	40
PRESCHOOL PLACE LLC	8419 TUPELO DR	TAMPA	8	8	0
PRIETO TEJEDA, TAMARA LLC	5102 BONNEDALE CT	TAMPA	1	1	0
PRIMAVERA PRESCHOOL INC.	12881 BAYOU BRANCH AVE	TAMPA	30	8	22
PRIMROSE SCHOOL OF BLOOMINGDALE	1280 BLOOMINGDALE AVE	VALRICO	30	0	30
PRIMROSE SCHOOL OF CARROLLWOOD	1770 W BEARSS AVE	TAMPA	31	0	31
PRIMROSE SCHOOL OF CROSS CREEK	10301 CROSS CREEK BLVD	TAMPA	78	16	62
PRIMROSE SCHOOL OF LUTZ 2	5001 W LUTZ LAKE FERN RD	LUTZ	35	0	35
PRIMROSE SCHOOL OF SOUTH TAMPA	1700 W KENNEDY BLVD	TAMPA	73	0	73
PRIMROSE SCHOOL OF TAMPA PALMS - 3	5307 PRIMROSE LAKE CIR	TAMPA	52	0	52
PRIMROSE SCHOOL OF WESTCHASE	12051 WHITMARSH LANE	TAMPA	51	0	51
PRODIGY ACADEMY AT CREEKSIDE	14044 US HIGHWAY 301 S	RIVERVIEW	58	15	43
PRODIGY ELC AT WINTHROP	6390 SCHOLARS HILL LN	RIVERVIEW	29	11	20
PROGRESS VILLAGE CHRISTIAN ACADEMY	8616 PROGRESS BLVD	TAMPA	59	48	19
RAElyN WHITEHEAD FAMILY DAY CARE HOME	1001 MALLEWOOD DR	BRANDON	2	2	0
RAINBOW KIDS CHILD CARE CENTER, LLC.	4124 W WATERS AVE	TAMPA	50	43	11
RAINBOW OF KIDS ACADEMY INC	2708 N CENTRAL AVE	TAMPA	50	48	7
RAMONA ERVIN-ROBINSON LARGE FAMILY CHILD CARE HOME	1736 WINDSOR WAY	TAMPA	5	5	0
RAMOS LEARNING INC	2118 N MACDILL AVE	TAMPA	48	43	9
RAYITO DE SOL	5504 CARROLLWOOD MEADOWS DR	TAMPA	9	9	0
RCCG GSA PRESCHOOL	710 S KINGS AVE	BRANDON	32	32	0
RENEE GRAHAM FAMILY DAY CARE HOME	2009 BALFOUR CIR	TAMPA	9	9	0

PROVIDER NAME	ADDRESS	CITY	CHILDREN SERVED		
			UNDUPLICATED TOTAL	SCHOOL READINESS	VPK
ROSAURA ORTEGA-SANTIESTEBAN FAMILY DAY CARE HOME	11311 N BOULEVARD	TAMPA	7	7	0
ROSE ACADEMY OF ACHIEVERS LLC	4108 E ELLICOTT ST	TAMPA	53	53	4
RUIZ, DIANELIS FAMILY CHILD CARE HOME	6646 COUNTY ROAD 579	SEFFNER	6	6	0
RUSKIN METHODIST PRESCHOOL	105 4TH AVE NW	RUSKIN	37	23	20
SAFE AND SOUND LEARNING CENTER LLC	8516 RIDEIN RD	TAMPA	24	21	8
SAFETYLAND DAY NURSERY & KINDERGARTEN	13122 N 15TH ST	TAMPA	190	174	36
SANDRA THOMAS FAMILY ENRICHMENT CENTER INC.	1924 E. COMANCHE AVENUE	TAMPA	41	41	0
SANDRA'S FAMILY CHILD CARE INC	8532 BRIAR GROVE CIR	TAMPA	3	3	0
SANDY CASTANO LARGE FAMILY CHILD CARE HOME	8009 DELL DR	TAMPA	6	6	0
SANDY'S LEARNING CENTER	15923 N FLORIDA AVE	LUTZ	32	30	6
SANDY'S LEARNING CENTER	15923 N FLORIDA AVE	LUTZ	36	34	5
SEA LIFE DAYCARE LLC	8402 CATALINA DR	TAMPA	2	2	0
SEE SAW JUNCTION DAYCARE & LEARNING CENTER INC	6812 N DIXON AVE	TAMPA	70	70	0
SEE SAW JUNCTION DAYCARE AND LEARNING CENTER II	8720 NORTH 40TH STREET	TAMPA	65	65	0
SEED OF LYGHT LOGISTICS SOL	2810 LINDEN TREE ST	SEFFNER	5	5	0
SEFFNER EARLY CHILDHOOD DEVELOPMENT CENTER INC	205 E US HIGHWAY 92	SEFFNER	52	52	0
SEMINOLE HEIGHTS UNITED METHODIST PRESCHOOL	509 E HANNA AVE.	TAMPA	35	11	26
SHANNON CLARK FAMILY DAY CARE HOME	8707 N WICK PL	TAMPA	9	9	0
SHINING STARS PRESCHOOL ACADEMY, INC.	603 E MORGAN ST	BRANDON	53	41	21
SHIRA SEKIRIME FAMILY DAY CARE HOME	4604 SERENA DR	TAMPA	12	12	0
SIMMONS CHILD WORLD	107 E CLAY AVENUE	BRANDON	176	167	18
SMALL BLESSINGS PRESCHOOL	500 W. PLATT STREET	TAMPA	33	0	33
SMART KIDS ACADEMY LLC	3512 W BAKER ST	PLANT CITY	36	32	6
SMART START PRE-PREP LLC	13801 MCCORMICK DR	TAMPA	77	41	39
SMART STEPS LLC	9653 WILSKY BLVD	TAMPA	92	53	45
SMILE HOME DAYCARE INC	10515 BLACKMORE DR	TAMPA	6	6	0
SOUTHSHORE MONTESSORI	7006 SAIL VIEW LN	APOLLO BEACH	29	0	29
ST JOSEPH'S CHILD CARE CENTER	3001 W DR MARTIN LUTHER KING JR BLVD	TAMPA	31	15	18
ST. ANDREW'S ACADEMY	3315 BRYAN RD	BRANDON	43	0	43
ST. CLEMENT'S ACADEMY	706 W 113TH AVE	TAMPA	5	5	0
ST. JAMES UNITED METHODIST PRESCHOOL	16202 BRUCE B DOWNS BLVD	TAMPA	83	0	83
ST. JOSEPH CATHOLIC SCHOOL	2200 N GOMEZ AVE	TAMPA	20	0	20
ST. PAUL CATHOLIC PRESCHOOL	12708 N DALE MABRY HWY	TAMPA	40	0	40
ST. TIMOTHY CATHOLIC EARLY CHILDHOOD LEARNING CTR	17512 LAKESHORE RD	LUTZ	30	0	30

PROVIDER NAME	ADDRESS	CITY	CHILDREN SERVED		
			UNDUPLICATED TOTAL	SCHOOL READINESS	VPK
STARFISH SCHOLARS OF VALRICO	4321 LYNX PAW TRL	VALRICO	62	20	42
STEAM PRESCHOOL ACADEMY AT NETPARK TAMPA BAY	5015 N 56 ST	TAMPA	161	141	43
STEAM PRESCHOOL ACADEMY OF PLANT CITY	1108 GOLDFINCH DR	PLANT CITY	79	57	27
STEP AHEAD ACADEMY	308 E 124TH AVE	TAMPA	97	91	11
STEPHANIE BROOKINS FAMILY DAY CARE HOME	4108 E FERN ST	TAMPA	11	11	0
STEPPING STONE	5506 E KIRBY ST	TAMPA	120	115	7
STEPS TO MATURITY LEARNING CENTER	9508 N NEBRASKA AVE	TAMPA	108	108	0
STORYBOOK RANCH PRESCHOOL INC.	8401 W LINEBAUGH AVE	TAMPA	17	0	17
STRAWBERRY CREST EARLY CHILDHOOD DEV CENTER INC	3802 GALLAGHER RD	PLANT CITY	53	53	0
SUAREZ-FORNAGUERA MARGARITA FAMILY DAY CARE HOME	926 HILLRISE DRIVE	BRANDON	6	6	0
SUNCOAST ACADEMY INFANT AND TODDLER CENTER	4210 HENDERSON BLVD	TAMPA	2	2	0
SUNCOAST ACADEMY PRESCHOOL	4207 W SAN MIGUEL ST	TAMPA	23	6	18
SUNRISE CHILDREN'S SERVICES, INC	1114 W SLIGH AVE	TAMPA	41	39	11
SUNSHINE CHILDREN'S LEARNING CENTER LLC - KELLY	4405 KELLY ROAD	TAMPA	54	45	14
SUNSHINE CHILDREN'S LEARNING CENTER, LLC - BAY	3923 W BAY AVE	TAMPA	73	59	19
SUNSHINE DAYCARE OF TAMPA LLC	8401 HILLSBOROUGH AVE STE:2	TAMPA	44	38	9
SWEET DREAMS FAMILY CHILD CARE	2105 W FLORA ST	TAMPA	7	7	0
SWEETHARTS HOME DAYCARE INC	810 W WHATLEY PL	TAMPA	2	2	0
SYLVIA WRIGHT-CASTILLO FAMILY DAYCARE HOME	10713 N SEMINOLE AVE	TAMPA	5	5	0
TAHUMARA RODRIGUEZ FAMILY CHILD CARE HOME LLC	8011 N CLARK AVE	TAMPA	2	2	0
TAMMY REDDISH FAMILY DAY CARE HOME	3010 E 24TH AVE	TAMPA	2	2	0
TAMPA BAY ACADEMY INC.	14214 N NEBRASKA AVE	TAMPA	19	1	19
TAMPA BAY CHRISTIAN ACADEMY OF FLORIDA, INC.	6815 N ROME AVE	TAMPA	97	78	28
TAMPA COMMUNITY CENTER	1725 E FOWLER AVE	TAMPA	33	28	9
TAMPA ELITE SPORTS ACADEMY	8001 SHELDON RD	TAMPA	60	60	0
TAMPA TORAH ACADEMY	5209 TAMPA PALMS BLVD	TAMPA	8	0	8
TAYMIR FAMILY HOME DAY CARE	9066 ARNDALE CIR	TAMPA	2	2	0
TEMPLE TERRACE PRESBYTERIAN WEEKDAY SCHOOL	420 BULLARD PKWY	TEMPLE TERR	102	83	31
THE ACADEMY AT TRUE SANCTUARY OF PRAISE	6528 US HIGHWAY 301 S STE 114	RIVERVIEW	61	49	18
THE BRANDON MONTESSORI SCHL AT RIVERHILL	4223 LYNX PAW TRL	VALRICO	32	0	32
THE CHILDREN OF DESTINY EARLY LEARNING CENTER	121 W PROSSER DR	PLANT CITY	5	5	0
THE DREAMS FACTORY DAY CARE SERVICES INC	6203 N COOLIDGE AVENUE	TAMPA	10	10	0

PROVIDER NAME	ADDRESS	CITY	CHILDREN SERVED		
			UNDUPLICATED TOTAL	SCHOOL READINESS	VPK
THE ENRICHMENT NEST CHILD DEVELOPMENT CENTER	2566 E STATE ROAD 60	VALRICO	49	44	7
THE GODDARD SCHOOL	13401 TAMPA OAKS BLVD	TEMPLE TERR	48	22	30
THE GODDARD SCHOOL	12964 BOGGY CREEK DR	RIVERVIEW	66	8	58
THE GODDARD SCHOOL	14106 SPECTOR RD	LITHIA	41	0	41
THE GODDARD SCHOOL BRICK PLACE	14607 BRICK PL	TAMPA	41	0	41
THE GODDARD SCHOOL OF SOUTH TAMPA	2401 W KENNEDY BLVD	TAMPA	20	20	0
THE GROWING TREE ACADEMY INC.	8718 SOUTH MOBLEY RD	TAMPA	56	41	20
THE LEARNING CENTER @ ST. JOHN	4110 N MACDILL AVE	TAMPA	2	2	0
THE LEARNING CENTER AT LAKE CARROLL	12012 NORTH ROME AVE.	TAMPA	43	23	21
THE LEARNING EXPERIENCE	3705 US HIGHWAY 301 S	RIVERVIEW	49	21	29
THE LEARNING EXPERIENCE	6302 30TH ST. NE	APOLLO BEACH	58	0	58
THE LEARNING EXPERIENCE	20780 TROUT CREEK DRIVE	TAMPA	61	0	61
THE LEARNING EXPERIENCE	16232 BAYBERRY GLEN DR	LITHIA	71	37	41
THE LEARNING EXPERIENCE - RIVERCREST	10709 CREST SIDE BLVD	RIVERVIEW	66	28	42
THE LEARNING EXPERIENCE BRANDON	413 E BLOOMINGDALE AVE	BRANDON	141	63	88
THE LEARNING STATION, LLC	10611 CONE GROVE RD	RIVERVIEW	43	11	33
THE MAGIC TREE FAMILY HOME CHILDCARE LLC	13911 CHERRY BROOK LN	TAMPA	1	1	0
THE NEST SCHOOL INC.	23461 COLLIER PARKWAY	LUTZ	42	0	42
THE PEACOCK'S PLUME COMPANY	1094 BLOOMINGDALE AVE	VALRICO	70	57	18
THE RIVERVIEW MONTESSORI SCHOOL AT RIVERCREST, LLC	11520 RAMBLE CREEK DR	RIVERVIEW	27	0	27
THE TAMPA JCC/FEDERATION, INC.	2710 SOUTH YSABELLA AVE.	TAMPA	18	0	18
THE VILLAGE	1206 E. 124TH STREET	TAMPA	47	47	0
THE VILLAGE EARLY LEARNING CENTER	3741 CANOGA PARK DR	BRANDON	118	30	90
THERESA THOMPSON FAMILY CHILDCARE HOME LIMITED LIABILITY COMPANY	5012 E. CLUSTER AVENUE	TAMPA	11	11	0
TIME 4 KIDS CHILDCARE LLC	8303 STEAMBOAT LN	TAMPA	1	1	0
TIME OF WONDER ACADEMY	5130 SUNFOREST DR STE 180	TAMPA	34	26	13
TIME OF WONDER SCHOOL	5130 SUNFOREST DR STE 180	TAMPA	34	25	12
TIMS PRESCHOOL INC.	601 SUNSET LN	LUTZ	44	0	44
TINY ADVENTURES PRESCHOOL OF NORTH TAMPA LLC	8108 N 10TH ST	TAMPA	19	19	0
TINY FEET LEARNING ACADEMY LLC	7902 W WATERS AVENUE	TAMPA	76	61	18
TLC GROUP HOME DAYCARE	1757 BROAD WINGED HAWK DRIVE	RUSKIN	1	1	0
TOGETHER TIME	15306 CASEY RD	TAMPA	28	23	7
TOP KIDS BILINGUAL PRESCHOOL 7 INC.	3805 JOHN MOORE RD	BRANDON	53	34	21
TOP KIDS BILINGUAL PRESCHOOL INC.	6701 S MANHATTAN AVE STE D	TAMPA	62	53	15
TOP KIDS BILINGUAL PRESCHOOL MACDILL CAMPUS	6807 S MACDILL AVE	TAMPA	24	19	6

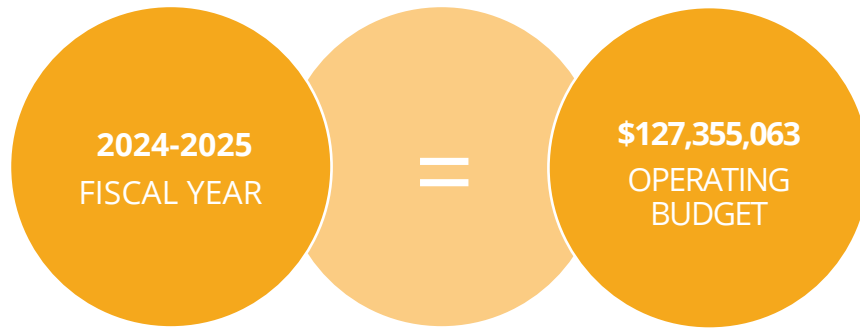
PROVIDER NAME	ADDRESS	CITY	CHILDREN SERVED		
			UNDUPLICATED TOTAL	SCHOOL READINESS	VPK
TOP KIDS BILINGUAL PRESCHOOL RIVERVIEW	10530 LAKE ST CHARLES BLVD	RIVERVIEW	159	124	53
TOP KIDS PRESCHOOL 5	202 E BROAD ST	TAMPA	69	56	14
TWO STEPS AHEAD EARLY LEARNING CENTER LLC	3905 E REGNAS AVE	TAMPA	29	29	0
UNIVERSAL ACADEMY OF FLORIDA	6801 ORIENT ROAD	TAMPA	39	0	39
UNIVERSITY C.C.C.	1902 E. 131ST AVENUE	TAMPA	111	111	0
USAA CHILD DEVELOPMENT CENTER	17200 COMMERCE PARK BLVD	TAMPA	19	0	19
USF PRESCHOOL FOR CREATIVE LEARNING	11811 BULL RUN DRIVE	TAMPA	33	5	28
V.I.P CHILD CARE, INC.	3712 W MCKAY AVE	TAMPA	12	0	12
VANESSA MCDUFFIE LARGE FAMILY CHILD CARE HOME	1814 FLAT BRANCH CT	VALRICO	7	7	0
VANGUARD KIDS	12660 SYDNEY RD	DOVER	86	83	13
VERONICA LEON FAMILY DAY CARE HOME LLC	6204 N CLARK AVE	TAMPA	5	5	0
VERONICA STREETS FAMILY DAY CARE HOME	603 OVERHILL DR	BRANDON	8	8	0
VICTORY LITTLE KNIGHTS ACADEMY LLC	13901 SHELDON ROAD	TAMPA	17	0	17
WALDEN LAKE EARLY LEARNING CENTER	2730 TURKEY CREEK ROAD	PLANT CITY	56	0	56
WALTON ACADEMY BEFORE & AFTERSCHOOL ENRICHMENT	4817 N FLORIDA AVE	TAMPA	47	47	0
WEE CARE	1823 E. 142ND AVE.	TAMPA	84	84	0
WEST TAMPA EARLY LEARNING CENTER LLC	3812 N ARMENIA AVE	TAMPA	80	80	0
WESTCHASE EARLY LEARNING CENTER LLC	9802 WESTCHASE DR	TAMPA	52	12	41
WESTMINSTER ACADEMY PRESCHOOL	402 E LUMSDEN RD	BRANDON	21	0	21
WESTTOWN CHRISTIAN ACADEMY INC.	13521 RACE TRACK RD	TAMPA	48	0	48
WINDSOR LEARNING ACADEMY	6920 HANLEY RD	TAMPA	15	12	4
WONDER KIDZ ACADEMY	15051 BRUCE B DOWNS BLVD	TAMPA	65	38	32
WONDER KIDZ ACADEMY II LLC	8018 HANLEY RD	TAMPA	107	87	28
WORLD OF COLORS	9022 TREE VALLEY CIR	TAMPA	7	7	0
WORLD OF LEARNING LLC.	6004 W JEAN ST	TAMPA	8	8	0
WORLDS OF IMAGINATION PRESCHOOL	1211 W REYNOLDS ST	PLANT CITY	41	0	41
YAHIMA'S FAMILY CHILD CARE HOME LLC	8502 PADDOCK AVENUE	TAMPA	5	5	0
YAIMA FAMILY DAYCARE LLC	4530 W HIAWATHA ST	TAMPA	2	2	0
YAIMET MAYEA HOME DAYCARE LLC	907 COOLWOOD PL	BRANDON	7	7	0
YANI PLAYLAND DAYCARE LLC	4926 EL DORADO DR	TAMPA	3	3	0
YANISLEYDI PEREZ FAMILY DAY CARE HOME	1416 W BURGER ST	TAMPA	1	1	0
YANNERIS PEREZ-GOMEZ DAYCARE LLC	4638 LANDSCAPE DR	TAMPA	2	2	0
YARDE FAMILY HOME DAYCARE LLC	7816 N BOULEVARD	TAMPA	6	6	0
YBOR EARLY LEARNING CENTER LLC	2003 N 36TH ST	TAMPA	95	95	0

PROVIDER NAME	ADDRESS	CITY	CHILDREN SERVED		
			UNDUPLICATED TOTAL	SCHOOL READINESS	VPK
YCDC LLC	15114 CARLTON LAKE ROAD	WIMAUMA	3	3	0
YDELSA CURBELO LARGE FAMILY CHILD CARE HOME	7012 COBBLEWOOD CT	TAMPA	11	11	0
YMCA SUCCESS AFTERSCHOOL ALAFIA	3535 CULBREATH DR	VALRICO	8	8	0
YMCA SUCCESS AFTERSCHOOL ANDERSON	3910 FAIR OAKS AVE	TAMPA	7	7	0
YMCA SUCCESS AFTERSCHOOL BELMONT ELEMENTARY	14150 GATE DANCER RD.	SUN CITY CENTER	32	32	0
YMCA SUCCESS AFTERSCHOOL CARROLLWOOD	3516 MCFARLAND RD	TAMPA	14	14	0
YMCA SUCCESS AFTERSCHOOL CITRUS PARK	7700 GUNN HIGHWAY	TAMPA	4	4	0
YMCA SUCCESS AFTERSCHOOL ESSRIG	13131 LYNN ROAD	TAMPA	19	19	0
YMCA SUCCESS AFTERSCHOOL FROST	3950 FAULKENBURG ROAD	RIVERVIEW	29	29	0
YMCA SUCCESS AFTERSCHOOL GORRIE	705 WEST DELEON STREET	TAMPA	3	3	0
YMCA SUCCESS AFTERSCHOOL GRADY	3910 MORRISON AVE	TAMPA	9	9	0
YMCA SUCCESS AFTERSCHOOL HERITAGE	18201 MEADOWS RD	TAMPA	25	25	0
YMCA SUCCESS AFTERSCHOOL IPPOLITO	6874 S FALKENBURG ROAD	RIVERVIEW	29	29	0
YMCA SUCCESS AFTERSCHOOL LAKE MAGDALENE	2005 PINE LAKE DR	TAMPA	22	22	0
YMCA SUCCESS AFTERSCHOOL LIMONA	1115 TELFAIR	BRANDON	22	22	0
YMCA SUCCESS AFTERSCHOOL MITCHELL	205 BUNGALOW PARK AVE	TAMPA	14	14	0
YMCA SUCCESS AFTERSCHOOL NELSON	5413 DURANT RD	DOVER	8	8	0
YMCA SUCCESS AFTERSCHOOL PINECREST	7950 LITHIA-PINECREST RD	LITHIA	10	10	0
YMCA SUCCESS AFTERSCHOOL PIZZO/MOSI	11701 BULL RUN	TAMPA	36	36	0
YMCA SUCCESS AFTERSCHOOL RIVERHILLS	405 RIVERHILLS DRIVE	TEMPLE TERRACE	22	22	0
YMCA SUCCESS AFTERSCHOOL ROOSEVELT	3205 FERDINAND AVE	TAMPA	2	2	0
YMCA SUCCESS AFTERSCHOOL SEFFNER	109 CACTUS ROAD	SEFFNER	8	8	0
YMCA SUCCESS AFTERSCHOOL SESSUMS	11525 RAMBLE CREEK DRIVE	RIVERVIEW	15	15	0
YMCA SUCCESS AFTERSCHOOL SUMMERFIELD	11990 BIG BEND RD	RIVERVIEW	24	24	0
YMCA SUCCESS AFTERSCHOOL SUMMERFIELD CROSSINGS	11050 FAIRWAY MEADOW DR	RIVERVIEW	28	28	0
YMCA SUCCESS AFTERSCHOOL TAMPA PALMS	6100 TAMPA PALMS BLVD.	TAMPA	14	14	0
YMCA SUCCESS AFTERSCHOOL TWIN LAKES	8507 N HABANA AVE	TAMPA	9	9	0

PROVIDER NAME	ADDRESS	CITY	CHILDREN SERVED		
			UNDUPLICATED TOTAL	SCHOOL READINESS	VPK
YOLEIDI GONZALEZ FAMILY DAY CARE HOME	525 N LARRY CIR	BRANDON	9	9	0
YOLEIVI AMARO HOME DAYCARE LLC	1511 W KNOLLWOOD ST	TAMPA	3	3	0
YOLY HOME DAYCARE LLC	12693 N BOULEVARD	TAMPA	5	5	0
YOSLAYNE FAMILY CHILD CARE HOME LLC	2120 W IVY ST	TAMPA	11	11	0
YOUNG INNOVATORS ACADEMY FISHHAWK	16641 FISHHAWK BLVD	LITHIA	29	15	16
YUDITH ENRIQUEZ-GARCIA LARGE FAMILY CHILD CARE HOME	8220 DONALDSON DR	TAMPA	9	9	0
YUMILA'S DAYCARE, LLC	2308 W ORIENT ST	TAMPA	6	6	0
YURELKYS FAMILY CHILD CARE LLC	12701 TROWBRIDGE LN	TAMPA	3	3	0
YURINA LEYVA-MANZANARES FAMILY DAY CARE HOME	8703 SOMERSWORTH PL	TAMPA	3	3	0
YUSIMI DIAZ FAMILY DAY CARE HOME	13101 N ROME AVE	TAMPA	1	1	0
ZORANGEL VALDES FAMILY DAY CARE HOME	6534 LA MESA CIR	TAMPA	5	5	0

Data is from the EFS Modernization Database as of August 13, 2025.

FISCAL SUMMARY



PROGRAM FUNDS

Segregation of funds and other local revenues available to the coalition.

FUND TYPE	AMOUNT
School Readiness (SR) Program Funds	\$ 91,460,532
SR Local Match Funds	\$ 1,379,891
Voluntary Prekindergarten (VPK) Education Program Funds	\$ 31,704,518
Other Local Revenues (including in-kind)	\$ 2,810,122
TOTAL	\$ 127,355,063

DETAILS OF EXPENDITURES BY FUND SOURCE

Details of expenditures by fund source, including total expenditures for administrative activities, quality activities, nondirect services, and direct services for children.

FUND TYPE	ADMINISTRATIVE ACTIVITIES	QUALITY SERVICES	NON-DIRECT SERVICES	DIRECT SERVICES FOR CHILDREN	TOTAL
SR Program	\$ 2,576,260	\$ 16,714,717	\$ 5,198,883	\$ 66,970,672	\$ 91,460,532
SR Local Match Funders	-	-	-	\$ 1,379,891	\$ 1,379,891
VPK	\$ 1,509,686	-	-	\$ 30,194,832	\$ 31,704,518
Other Local Revenues	-	-	-	\$ 2,810,122	\$ 2,810,122
TOTAL	\$ 4,085,946	\$ 16,714,717	\$ 5,198,883	\$ 101,355,517	\$ 127,355,063

COALITION STAFF AND RELATED EXPENDITURES

Total number of coalition staff and the related expenditures for salaries and benefits.

STAFF TYPE	NUMBER OF STAFF	EXPENDITURES FOR SALARY & BENEFITS
EARLY LEARNING COALITION STAFF	141	\$ 12,745,750
SUBRECIPIENT STAFF	0	-
TOTAL	141	\$ 12,745,750



BOARD OF DIRECTORS

AAKASH PATEL

Board Chair
Elevate, Inc.

DR. SHAWN H. ROBINSON

Board Vice-Chair
Law Office of Shawn H. Robinson

BOB HYDE

Board Secretary
Suncoast Credit Union

DR. DAIRA AVILA BARAKAT

Sunshine Dentistry

REBECCA BACON

The Children's Board of Hillsborough County

TRACYE H. BROWN

Hillsborough County Public Schools

GINO CASANOVA

Shumaker Advisors

ANNETTE EBERHART

Private Provider Representative
Kidd's R Us Family Childcare

KELLEY FLANNERY

South Tampa Chamber of Commerce

ADAM GIERY

Strategos Group

JOHNATHAN FERRO

Synovus Bank

AMANDA JAE

Faith - Based Provider Representative
Palma Ceia United Methodist Day School

DR. JACQUELINE JENKINS

Hillsborough County Head Start/
Early Head Start

GWEN MYERS

Hillsborough Board of County Commissioners

BETH PASEK

Florida Department of Children and Families

CHANTAL PORTE

Florida Department of Children and Families

ASHLEY PORCH

Americas Mortgage Professionals, LLC

DR. LARISSA RUIZ BAÍA

Hillsborough College (HC)
Ybor City Campus

ALINA SHAFFER

Tampa Electric Company (TECO)

FELICIA THOMAS

Sunshine Health

BRIAN L. MAYS

Patriot Mark Realty

NOELLE WOSTAL

RE/MAX Action First

CAMERON CASSEDY

Cassedy Financial Group

WYNTON GEARY

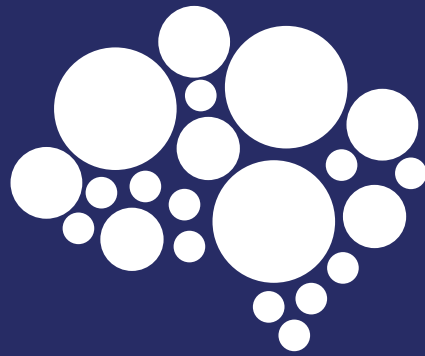
Florida Department of Health
in Hillsborough County

KEIDRIAN KUNKEL

CareerSource Tampa Bay

EMILY SHAFFER-HUDKINS

Bay Area Early Steps



Funded by:



DIVISION OF
Early Learning

LEARN EARLY. LEARN FOR LIFE.