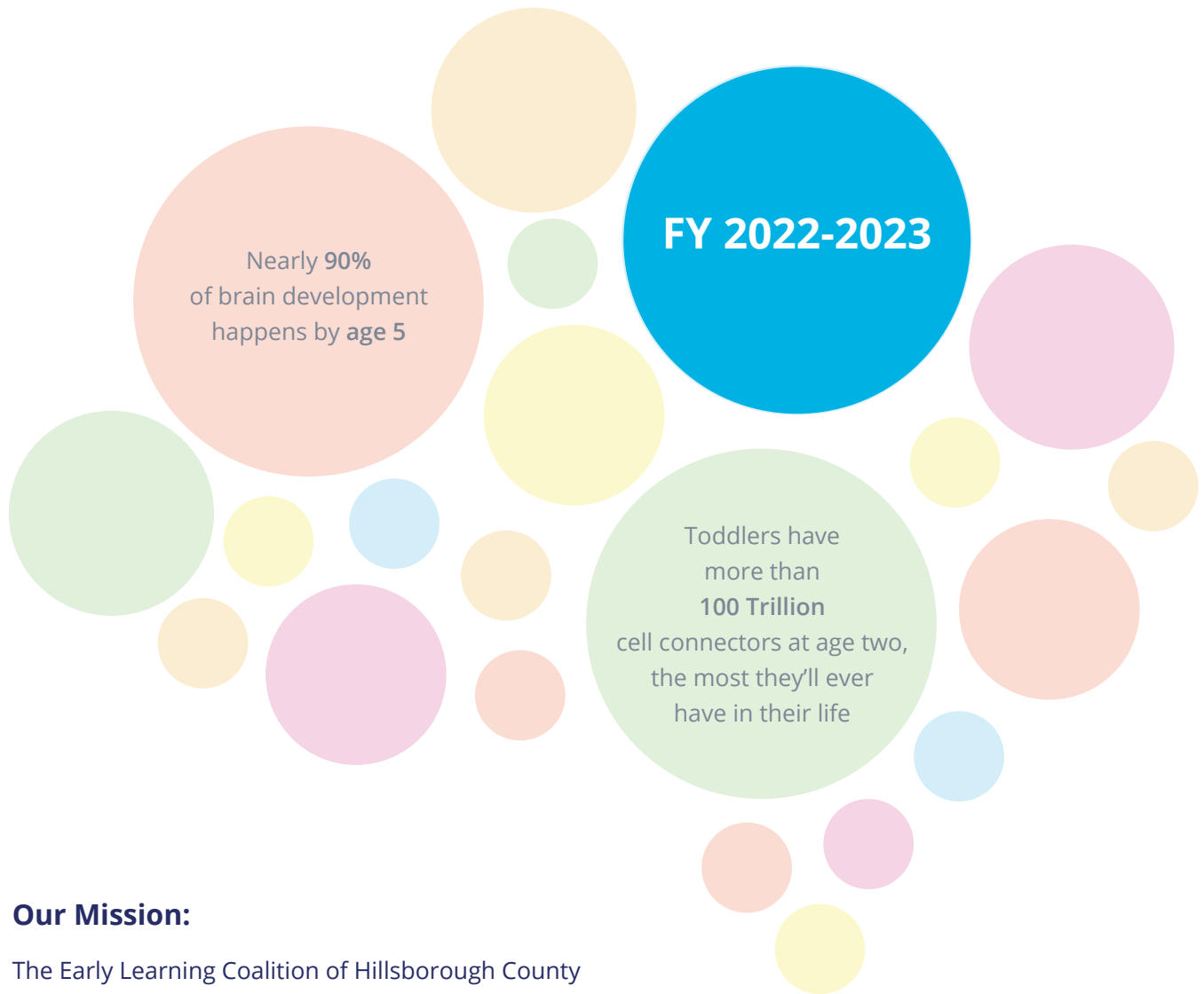


ANNUAL REPORT



Our Mission:

The Early Learning Coalition of Hillsborough County provides children, birth to 5 years, high quality, equitable and inclusive early learning experiences, preparing them for success in school and life through the collaboration of families, educators and the community.

TABLE OF CONTENTS



Evaluation of Direct Enhancement Service

Message from the CEO	3
Comprehensive Consumer Education	4
Provider Financial Supports	6
Training and Technical Assistance	10
Quality Activities for Infant and Toddler Care.....	18
Monitoring.....	20
Screening and Support Services	21

Data Summary

Children Served in School Readiness.....	22
Child Disenrollment	25
Provider Type.....	26
School Readiness Provider Revocation.....	27*
Voluntary Prekindergarten Provider Revocation...	27*
Children Served by Provider	28

Fiscal Summary

Program Funds	53
Details of Expenditures by Fund Source	54
Coalition Staff and Related Expenditures.....	54

ELCHC Board of Directors

55

** Page 27 contains sensitive information. If you wish to view this page please contact Community Relations at communityrelations@elchc.org*

A LETTER FROM THE CEO



Dear Friends,

The Early Learning Coalition of Hillsborough County (ELCHC) provides children, birth to 5 years, high-quality, equitable, and inclusive early learning experiences, preparing them for success in school and life through the collaboration of families, educators, and the community. Regardless of our obstacles, we will keep working to find answers because we know the children we serve rely on us. ELCHC's devoted employees and childcare providers worked relentlessly to stabilize our early learning workforce, develop capacity, and support families. We spoke with providers, chatted with families, and worked with partners during 2022-2023. Most importantly, we paid attention.

2022-2023 was a pivotal year because of the post-pandemic and ongoing developments in the early learning community. Fortified in their commitment, our early learning programs continued to address the needs of Hillsborough children and families. We are grateful for these efforts! Highlights of the year included implementing new literacy requirements for those teaching Voluntary Prekindergarten (VPK), implementing program assessment in VPK programs, and keeping pace with the growing needs for childcare, especially for children under the age of five. With the assistance of the Florida Legislature, funding to support childcare subsidies (School Readiness) increased, allowing our Coalition's ability to continue the enrollment of children. During this year, we found new childcare partners to provide School Readiness services, helping us to meet that need. As Hillsborough continues to grow at a rapid rate, the challenge of ensuring the availability of high-quality early learning programs is a high priority for our Coalition. We are honored by the caring community of early learning professionals who continue to serve our community during changing times.

Throughout the year, the ELCHC team delivered several grant and stipend options to childcare providers to help early learning programs that were struggling to keep their doors open while child attendance fluctuated. Staff aided several families looking for childcare by using multiple communication channels. Regardless of how the ELCHC staff is tested, they rise to do the critical work behind the scenes to assist families and early learning programs. Thank you to the ELCHC team for your dedication to advancing our mission of "ensuring every child is ready for school!" Our Board of Directors is at the heart of our Coalition, and we thank them for volunteering to govern.

If you would like to volunteer or support the early education experience of children in Hillsborough County, we'd love to hear from you.

With gratitude,
Dr. Fred L. Hicks
Chief Executive Officer of ELCHC

EVALUATION OF DIRECT ENHANCEMENT SERVICES

COMPREHENSIVE CONSUMER EDUCATION

Parents who want or need childcare face the challenge of searching for quality services within a program that is also convenient, affordable, and aligns with their goals for their child's educational attainment. In response, the Early Learning Coalition of Hillsborough County's (ELCHC) Family Services Operations team developed a comprehensive approach to delivering various strategies and resources to support families seeking the proper childcare placement for their children. The ELCHC's Intake and Eligibility Counselors are certified to offer Childcare Resource and Referral services (CCR&R) and offer unbiased information and guidance to families about childcare options, information to help families identify quality early learning programs, financial assistance strategies, and referrals to other community programs and resources as needed. CCR&R is a free service for all families in Hillsborough County.

In fiscal year 2022-2023, the ELCHC Intake and Eligibility staff provided in-person services at the ELCHC office. The lobby was an essential resource to ensure families have the technology assistance needed to complete the online School Readiness (SR) and/or Voluntary Prekindergarten (VPK) application process.



ELCHC Average Response Metrics For Fiscal Year 2022-2023

680+ online submissions related to CCR&R

90% average response within 24 hours the Customer Relations Center responded to CC&R calls and online inquiries related to childcare needs

96,996+ phone calls from Hillsborough County families interested in SR, VPK and/or additional resources for young children

3752+ families were served in person, with 90% served within 10 minutes of arrival

The ELCHC plays a vital role in coordinating resource and referral programs, focusing on providing comprehensive consumer education to parents and the public regarding participation in the school readiness program and parental choice. ELCHC coordinates such initiatives by:

ELCHC maintains a website with detailed information about the School Readiness Program, including eligibility criteria, application processes, and providers. Parents and the public can access these resources at their convenience.

ELCHC collaborates closely with local childcare providers participating in the School Readiness Program. This collaboration included regular communication and training to ensure providers are well-informed about program requirements.

ELCHC places a strong emphasis on promotion family engagement in early childhood education. the team members encourage parents and guardians to actively participate in their child's education through initiatives such as On My Way to Kindergarten and Five 4 Five events and workshops. These programs educated parents on creating a supportive learning environment at home and celebrated parental involvement.

OUTREACH METRICS FOR FISCAL YEAR 2022- 2023:

200+ OUTREACH EVENTS AND
15,000+ BOOKS DISTRIBUTED
IN THE COMMUNITY.



During the fiscal year, the ELCHC hosted quarterly Family Engagement "Day of Play" events, providing opportunities for children to learn through play and for parents to learn more about the importance of early childhood education. The ELCHC also participated in over 200 community events and distributed 15,000 books to families and children in Hillsborough County.



PROVIDER FINANCIAL SUPPORTS

The ELCHC continues to incentivize and assist providers in meeting childcare performance standards, implement curricula, and provide professional development opportunities. These supports help improve the overall consistency and quality of School Readiness Programs throughout Hillsborough County.

The fiscal year 2022-2023 presented exciting opportunities for the ELCHC to support the childcare provider community by adding several new grants. Funding from the Coronavirus Response and Relief Supplemental Appropriations Act (CRRSA Act) facilitated the following financial support for our providers. These workforce initiatives were designed to recruit, upskill, and retain Early Childhood staff and providers.

EARLY LEARNING COALITION WORKFORCE INITIATIVES

Retention

Programs and educators were awarded stipends for hiring, training, and on-boarding new team members and paid an additional bonus if the employee was still employed after 3 months.

Eligibility:

- Staff must be employed at a program for at least 14 days for initial payment and employed after 3 months.
- The program must have an active School Readiness contract.
- Centers can apply for up to 5 staff members, and Family Childcare Homes (FCCHs) can apply for 1 staff member or substitute.

Total Awarded:

Educators: 63, totaling \$47,250

Programs: 29, totaling \$29,000

New School Readiness Programs

Programs that Executed a School Readiness (SR) contract with ELCHC between January 1, 2022, and May 31, 2023, were eligible to receive up to \$4,000 in classroom materials. The deadline to apply was May 15, 2023.

Eligibility:

- In good standing with Childcare Licensing (No Class 1 violations in the last 2 years)
- New School Readiness Provider Application emailed to providers once SR contract has been signed.

Total Awarded:

53 programs, totaling \$189,728



CLASS AND ACHIEVEMENT BONUSES

Educators received \$250.00 for the successful completion of Master CLASS (Classroom Assessment Scoring System) Group Coaching training (MMCI), and an Achievement bonus for all other courses offered at the Institute for Early Childhood Professionals.

Eligibility:

- Infant Toddler & Preschool MMCI from September 2022 to May 2023 time frame
- Successful Completion of trainings

Total Awarded:

1,261 Achievement bonuses totaling \$216,810

BUSINESS LEADERSHIP TRAINING

Business and leadership development workshops focused on the “Business of your Childcare Business” Finance Course. Offered in English and Spanish by the Business Leadership Institute (BLI).

Eligibility:

- Owners, Directors, or administrative positions, SR educators were eligible for a \$500 stipend and technology package after successfully completing the course.

Total Awarded:

133 programs, totaling \$65,500, technology package \$489,432.

VPK TRAINING ACHIEVEMENT BONUS

The Voluntary Pre-Kindergarten (VPK) Training Stipend was specifically for VPK Staff that were listed on the 2022-2023 VPK APP. Once the VPK Staff have completed the new Division of Early Learning (DEL) VPK training requirements, they were eligible for a one-time maximum of \$150.00 stipend.

Eligibility:

All applicants must have obtained the required training between June 24th, 2022, and December 30th, 2022.

Total Awarded:

860 educators, totaling \$51,000.

45 HOUR/CDA/CDA RENEWAL ACHIEVEMENT BONUSES

Stipend for successful completion of DCF 45-hour mandated training and/or their CDA for educators in SR and VPK sites.

Eligibility:

Completion must be reflected in a current DCF transcript and completed between January 1, 2021, and May 31, 2023. Early Childhood staff may apply for both stipends if applicable.

- DCF 45-hour Mandated Training (DCF Transcript)- \$500
- CDA (DCF transcript) – \$500, CDA Renewal (DCF Transcript)- \$300

Total awarded:

1,036 educators, totaling \$434,800.

DIRECTOR'S CREDENTIAL & RENEWAL BONUSES

Stipend for successful completion of the Director Credential or Renewal for administrators and educators working in SR and VPK sites.

- Director Credential renewal- \$300
- Director Credential- \$500

Total awarded:

292 directors, totaling \$116,000.

LONGEVITY STIPENDS

Stipend Awards of up to \$1,000 based on how many years educators have worked at a childcare site, specifically for School Readiness and VPK contracted programs.

Eligibility:

- \$375.00 for 18 months-3 years at the same site or within the same company
- \$750.00 for 3-5 years at the same site or within the same company
- \$1,000.00 5+ years at the same site or within the same company

Total awarded:

1st Round	1,390 educators	\$546,800
2nd Round	2,033 educators	\$1,725,575
Bonus	649 educators	\$324,500

LASTING EDUCATORS STIPENDS

Stipend Awards of up to \$1,000 based on how many years educators have worked at a childcare site, specifically for Non-School Readiness and VPK contracted programs and staff that did not qualify or apply for the Longevity stipend.

Eligibility:

- \$375.00 for 18 months-3 years at the same site or within the same company
- \$750.00 for 3-5 years at the same site or within the same company
- \$1,000.00 5+ years at the same site or within the same company

Total awarded:

1,205 educators, totaling \$530,250.

TEACHER APPRECIATION BONUS

Stipend awards were available to all early childhood educators working in contracted and non-contracted programs to show appreciation for their dedication to the profession.

Eligibility:

- \$600 for at least 18 months at the same early childhood site

Total award:

2,154 educators, totaling \$1,032,000.

INCENTIVE\$

INCENTIVE\$ rewards teachers, directors and family childcare providers working with children ages birth to five with financial payments based on their level of education and sustained employment.

Eligibility:

- Earn less than \$25.00 per hour as an early childhood educator in Hillsborough County.
- Work in a School Readiness or VPK contracted site
- Be employed for at least six months with children birth to 5 years of age for at least 20 hours per week.
- Have at least one of the education levels listed on the INCENTIVE\$ Scale.

Total awarded:

671 educators, totaling \$745,448.21.

UNITED WAY

The Quality Childcare Initiative is a three-year partnership led by United Way Suncoast in partnership with the Early Childhood Council and Early Learning Coalition of Hillsborough County with a goal of improving outcomes for children attending childcare in areas with a high concentration of ALICE (Asset Limited, Income Constrained, Employed) families.

Total awarded:

34 educators, 3 programs totaling \$16,631.

"CELEBRATE YOU" WEEK

A week-long celebration for providers, titled "Celebrate You" to recognize the quality efforts of programs. Each day, ELCHC team members, staff, and board members visited programs to recognize programs and teachers that meet specific criteria.

Eligibility:

- 80% Kindergarten readiness rate or higher
- 4.5 CLASS score or higher with 30% or more School Readiness
- Includes 4 sites with the most improved CLASS scores.

Total awarded:

108 educators, totaling \$108,000.

14 programs, totaling \$54,000.

Description	# Issued	Total Amount
Recruitment Bonus	372	\$185,000
Health & Safety Bonus	285	\$185,000
CLASS Bonus - PreK	47	\$28,200
CLASS Bonus - Infant/Toddler	18	\$10,800
Upskill Directors	67	\$50,250
Child Success Grants	191	\$120,900
CLASS Performance Bonus	81	\$41,300
Continuous Quality Improvement Grants	113	\$2,029,983
CLASS Observer Director Training	372	\$25,200

TRAINING AND TECHNICAL ASSISTANCE

The ELCHC partnered with the Early Child Council (ECC) of Hillsborough County, University of South Florida (USF) program-wide Behavioral Supports, Florida State University's (FSU) 10 Components for Quality Care for Infants and Toddlers, Champions for Children, DEL, Frameworks, The Crisis Center of Tampa Bay, Teachstone, and WEDU to offer over 150 virtual, in-person, and asynchronous trainings and learning events in English and Spanish, if possible, to our providers and families.

Early learning teachers and professionals have one of the most important jobs: caring for our community's youngest citizens. While we are at work, teachers focus on providing quality early learning to our children so they are ready for kindergarten and life. To recognize and celebrate the positive impact that early learning teachers and professionals have on our children and community, the ELCHC hosted an event that provides professional development in a fun, playful, and purposeful way.



Teacher's Night Out at the Glazer Children's Museum: Play with Purpose provided an opportunity for educators to tap into their inner child and play with the interactive exhibits at the museum that they could then translate back to the classroom to improve child outcomes. A total of 235 educators, 45 volunteers, 17 vendors, and 2 ELCHC board members were in attendance.

TARGETED TECHNICAL ASSISTANCE WAS OFFERED FOR THE FOLLOWING TRAININGS:

Master CLASS Series, Jump Start your CLASS, HITI, Quality Improvement and CLASS Group Coaching

Technical Assistance consists of:

Master CLASS (Classroom Assessment Scoring System) Series:

After attending an orientation session, teachers will review individual score reports from the CLASS assessment tool with Coaches to identify areas for growth and patterns or trends in their score report. Teachers are also able to reflect on their observation and identify behaviors or interactions they can improve on and improve their practice.

Jump Start Your CLASS:

Providers clarification of terminology used during observations: 1 cycle of CLASS is completed to provide feedback for improvements and suggestions for strategies to implement are given to the teacher.

Hillsborough Infant & Toddler Initiative (HITI):

Teachers select a topic of their choice in which they would like support. DAP, Classroom Management, CLASS, etc. 2 cycles of the CLASS tool are completed and feedback for improvements and suggestions for strategies to implement are given to the teacher.

Quality Improvement Plan (QIP):

Various forms of TA are provided based on teachers wants/needs including Room Arrangement for improved visibility of children and effective interactions.

CLASS Group Coaching:

Additional resources from Teachstone such as assigned readings, exemplar videos and reflection journals with instructor or coach feedback are provided to participants.

CURRICULUM

Creative Curriculum for Infants, Toddlers, and Twos

This training explores the three volumes (The Foundation, Routines, and Experiences, The Objectives for Development and Learning) and the supplemental materials (Mighty Minutes, Intentional Teaching Cards, Book Discussion Cards) included in the curriculum kit that outlines the importance and benefits of a responsive environment and individualized care. The 38 research-based objectives will provide teachers with the guidance to focus on the factors that are most important for very young children.

Creative Curriculum for Infants, Toddlers, & Twos Espanol

La capacitación explorará los tres volúmenes del Currículo Creativo (La Fundación, Rutinas y Experiencias, Los Objetivos para el Desarrollo y el Aprendizaje) y los materiales complementarios (Mighty Minutes, Tarjetas de Enseñanza Intencional, Tarjetas de Discusión de Libros) incluidos en el paquete curricular que describe la importancia y los beneficios de un entorno receptivo y atención individualizada. Los 38 objetivos basados en la investigación proporcionarán a los maestros la orientación para centrarse en los factores que son más importantes para los niños muy pequeños.

Creative Curriculum for Preschool - 6th Edition

This highly interactive 3-day learning event is designed to help teachers of all levels implement The Creative Curriculum for Preschool in their classroom. Teachers will become familiar with the 38 objectives for Development and Learning that inform every aspect of teaching. Teachers can explore and practice using the knowledge-building volumes and daily resources. Through small and large group discussions and activities, teachers will learn how to implement a study, use Teaching Guides, create a lesson plan, and discover how to integrate content into daily events through intentional teaching experiences.

Frog Street PreK 2013 Edition

A comprehensive and interactive implementation course is designed to help teachers get started with the Frog Street curriculum in the best possible way. Through hands-on training, teachers can review all the components of the curriculum and gain a better understanding of how to use it for instructional purposes. Daily, intentional lesson sequences for social-emotional development using Conscious Discipline strategies are modeled. Additionally, teachers learn how to integrate content area skills into daily lessons for all domains (Social, Emotional, Cognitive, Language, and Physical). This course includes group activities to help teachers apply learning in a fun and engaging way.

Frog Street PreK 2020

A comprehensive and interactive implementation course is designed to help teachers get started with the Frog Street curriculum in the best possible way. Through hands-on training, teachers can review all the components of the curriculum and gain a better understanding of how to use it for instructional purposes. Daily, intentional lesson sequences for social-emotional development using Conscious Discipline strategies are modeled. Additionally, teachers learn how to integrate content area skills into daily lessons for all domains (Social, Emotional, Cognitive, Language, and Physical). This course includes group activities to help teachers apply learning in a fun and engaging way.

Frog Street Curriculum- Toddler *ENGLISH*

Frog Street is a comprehensive, research-based curriculum that integrates instruction across developmental domains and early learning disciplines.

Frog Street Curriculum- Toddler *SPANISH*

Frog Street es un currículo, basado en investigaciones, que integra la instrucción en todos los dominios del desarrollo y disciplinas de aprendizaje temprano.

FSU 10 Components of Quality Care for Infants & Toddlers Curriculum & Individualization

This training looks at the curriculum for infants and toddlers and the importance of individualized programming. Practitioners will explore curriculum within the context of relationships and the importance of observing children for individualization.

EARLY LEARNING ENVIRONMENTS

FSU 10 Components of Quality Care for Infants and Toddlers - Environments for Learning

Participants will look at the importance of providing environments for infants and toddlers that support their unique developmental needs. The focus areas include comfortable environments, social surroundings, thoughtfully planned caregiving settings, settings for exploration, opportunities for active movement & learning, and fresh-air living environments.

FSU 10 Components of Quality Care for Infants/ Toddlers - Small Groups with Optimal Ratios

To allow teachers and young children the opportunity to develop close and caring relationships with children, Component 4 addresses: Optimal ratios and workable group sizes.

Master CLASS and Outdoor Play

This highly interactive course introduces learners to strategies they can use with their class outside and during gross motor activities. Learners will explore how to adapt their current classroom practices to make the most of their time with children while increasing the effectiveness of the interactions they have with children.

HEALTH, SAFETY AND NUTRITION

FSU 10 Components of Quality Care for Infants & Toddlers-Safe & Healthy Program Practices

This training looks at the context of close relationships, social-emotional development, and best program practices for health and safety and how these practices affect quality care.

Workplace Wellness Series-Sessions 1 & 2: Resiliency/Managing Stress & Self-Care

Session 1 - Resiliency in the Workplace:

In this workshop, participants learn to define resiliency and different factors that may enhance or hinder a person's resiliency in the workplace. Participants can complete a resiliency test that helps them identify their levels of resiliency, which will help them create a resiliency plan.

Session 2 - Managing Stress & Self-Care:

In this workshop, participants learn about the concept of PERMA (positive emotion, engagement, positive relationships, meaning, accomplishments/ achievements) and how to apply it in the workplace and their personal lives. This workshop is broken down into five individual activities that will go through each element of PERMA to help provide practical applications of the concepts.

Workplace Wellness Series-Sessions 3 & 4: Burnout/ Mindfulness

Session 3 - Burnout

In this workshop, participants learn to define and identify burnout in themselves and others in their workplace. Participants gain knowledge of burnout, what increases the likelihood of experiencing burnout, how to help ease burnout, and develop a burnout plan for themselves through group discussions and selected activities.

Session 4 - Mindfulness

In this workshop, participants learn mindfulness and the effects associated with actively practicing mindfulness. Participants will engage in a variety of activities related to mindfulness both individually and within a group setting.

CPR, First Aid & Fire Extinguisher Training

This training, in accordance with guidelines released by national, state, and local governments, is designed to train and prepare our childcare providers with CPR, First Aid, and Fire Extinguisher skills.

Entrenamiento de RCP, Primeros Auxilios y Extintor de Fuegos

Este entrenamiento, de acuerdo a las guías publicadas por el gobierno nacional, del estado y locales, está diseñada para capacitar y preparar a nuestros proveedores de cuidado infantil en técnicas de resucitación cardiopulmonar, primeros auxilios y extinción de incendios.

LEADERSHIP AND BUSINESS ADMINISTRATION

Complaints Welcomed

This training is designed to help childcare business owners and staff effectively receive and respond to complaints from frustrated parents, teachers, and stakeholders. The training covers strategies to become an effective complainer, which can improve communication skills with others. Participants can increase their professionalism and lower their stress levels when dealing with complaints.

Las Quejas y Conflictos son Bienvenidos

Esta capacitación está diseñada para ayudar a los propietarios y al personal de empresas de cuidado infantil a recibir y responder eficazmente a las quejas de padres, maestros y partes interesadas frustrados. La capacitación cubre estrategias para convertirse en un quejoso eficaz que puede mejorar las habilidades de comunicación con los demás. Los participantes pueden aumentar su profesionalismo y reducir sus niveles de estrés al abordar las quejas.¿

Business Leadership Training

This series of powerful business and leadership development workshops helps early-learning childcare entrepreneurs, operators, and educators develop their skills in business and leadership. These workshops focus on the “business of your childcare business.” With the current economic disruption caused by COVID, this training is important to help participants thrive in their roles and achieve their goals.

Cohorte de Liderazgo

Esta serie de poderosos talleres de desarrollo empresarial y de liderazgo ayuda a empresarios, operadores y educadores de cuidado infantil de aprendizaje temprano a desarrollar sus habilidades comerciales y de liderazgo. Estos talleres se centran en el “negocio de su negocio de cuidado infantil”. Con la actual perturbación económica causada por COVID, esta capacitación es importante para ayudar a los participantes a prosperar en sus funciones y alcanzar sus objetivos.

A Beginners Course: In Becoming A Marketing Boss In Child Care

This free marketing training session is designed to equip businesses with effective online marketing strategies, marketing solution tools, social media tactics, and content creation techniques to enable them to succeed.

Un curso para principiantes: cómo convertirse en un experto en marketing de cuidado infantil

Esta sesión gratuita de capacitación en marketing está diseñada para equipar a las empresas con estrategias efectivas de marketing en línea, herramientas de soluciones de marketing, tácticas de redes sociales y técnicas de creación de contenido que les permitan tener éxito.

FSU 10 Components of Quality Care for Infants & Toddlers -Component 2: Staff Well-Trained

This learning event provides information on writing purposeful, objective observations of children. Participants will have many opportunities to distinguish between subjective and objective observations and write factual, purposeful observations. Participants can explore various strategies for recording, organizing, and documenting observations to inform planning, assessment, and communication with families. These activities will benefit early childhood teachers using any curriculum or assessment of learning.

SOCIAL AND EMOTIONAL COMPETENCE

Early Childhood Social and Emotional Growth

The training includes using PBS online resources to share ways to promote healthy social-emotional growth in preschoolers. The facilitator shares videos, hands-on activities, books, games, and creative ideas to help children navigate emotions and social situations, as well as communication strategies to use with families. Learners gain ideas to use immediately in their learning centers.

Circle of Security

The Circle of Security is a way of thinking about emotion and behavior. It enables early childhood professionals to look beyond a child's immediate behavior and think about how to meet their genuine relationship needs. This 8-week series focuses on supporting and strengthening caregiver-child relationships by guiding early childhood professionals through new ways to understand and respond to children's behavior.

Guia Positiva del Comportamiento

Este taller tiene el propósito de identificar las conductas retantes de los niños y las estrategias que pueden usar los maestros y padres para guiar de manera positiva el comportamiento. En el mismo se definirán conceptos, se presentarán estrategias y se dialogara sobre la importancia de la reflexión y presencia de los adultos en la vida de los menores.

Que Hacer Cuando Estás Enojado

Durante cuatro sesiones nocturnas, los alumnos participarán en actividades para ayudar a los niños a comprender sus sentimientos de enojo, aprender estrategias apropiadas para ayudar a los niños a manejar esos sentimientos y ayudarlos a desarrollar el autocontrol. Este evento de aprendizaje se basa en las creencias e ideas de Fred Roger sobre los niños y los sentimientos de ira.

What To Do With the Mad You Feel

For four evening sessions, learners will participate in activities to help children understand their angry feelings, learn appropriate strategies to assist children in managing those feelings, and helping children to develop self-control. This learning event is based on Fred Roger's beliefs and ideas about children and angry feelings.

FSU 10 Component of Quality Care for Infant/Toddler Primary Caregiving/Continuity of Care

To promote ongoing, meaningful relationships that extend over time between teachers, children, and families, Component 5 includes the Assignment of Primary Caregivers and Continuity of Care.

FSU 10 Components of Quality Care for Infant/Toddler: Active & Responsive Caregiving

Responsive caregiving helps infants and toddlers begin to understand and regulate their emotions and provides predictability, safety, and security. Responsive caregivers take cues from each child and know when to expand on their initiative, when to guide, and when to intervene. They respond to signs of stress in children and provide comfort and security as needed. Caregivers promote the child's emerging sense of self and relationships with others and show acceptance and respect for all children. This training provides strategies to support children's relationships with adults, support for transitions, how to nurture young children during routines, and provide responsive guidance.

LANGUAGE AND LITERACY

Master CLASS- Toddler CLASS Language and Literacy

This highly interactive course is designed to introduce learners to strategies they can use in the classroom and explore how to adapt current classroom practices to make the most of their time with children while increasing the effectiveness of their interactions.

FSU 10 Components of Quality Care for Infant & Toddlers-Emerging Language & Literacy

The path to language and literacy begins with interactions between adults and young children. In quality programs, teachers build language experiences within daily routines. When possible, teachers speak the primary or home language of the children. They respond to the sounds made by infants and toddlers and use words to give meaning to what children express. Teachers maintain a balance between listening to and talking with each child. Books and other print materials are available throughout the classroom. Shared reading is enjoyed daily, and families are encouraged to read with their children at home. Songs, nursery rhymes, finger plays, and pre-writing materials promote the development of language and literacy. This training provides strategies to promote early language and literacy for children from birth to 36 months.

Hook Them with Books

This learning event is designed for new and veteran preschool teachers. Learners will learn how to create a literacy-rich environment, preparing preschoolers for kindergarten. Learners will also have an opportunity to create developmentally appropriate literacy activities and materials.

Master CLASS Language, Literacy, Communication with Planning for I/T

This training offers an opportunity to gain a closer understanding of the CLASS tool and the requirements for the School Readiness Program Assessment. Participants can benefit from two sessions that provide strategies for improving Infant and Toddler Language, Literacy, and Communication skills, as well as Planning and Exploration techniques that can help improve their CLASS score.

Master CLASS Lenguaje, alfabetización, comunicación con planificación para infantes/ niños

Esta capacitación ofrece la oportunidad de obtener una comprensión más cercana de la herramienta CLASS y los requisitos para la Evaluación del Programa de Preparación Escolar. Los participantes pueden beneficiarse de dos sesiones que brindan estrategias para mejorar las habilidades de lenguaje, alfabetización y comunicación de bebés y niños pequeños, así como técnicas de planificación y exploración que pueden ayudar a mejorar su puntaje de CLASS.

Comienzo, Rima, y Escritura Alfabética

Este evento de aprendizaje está diseñado para discutir los diferentes métodos acerca de las habilidades de enseñanza emergente de literatura, incluyendo la escritura durante los años en pre-escolar así como las diferencias entre conocimiento fonológico y habilidades fónicas.

Onset, Rime, Alphabet Time & Writing Tool!

This learning event is designed to discuss the many hands-on methods for teaching emergent literacy skills including writing in the preschool years as well as the differences between phonological awareness and phonics skills.

FAMILY INVOLVEMENT

FSU 10 Components of Quality Care Infant\ Toddler Family Engagement & Cultural Continuity

In the context of meaningful relationships with families who are essential partners in their child's care, Component 9 addresses: Approach to Working with Families, Ongoing Communication, Family Input and Engagement, and Cultural Continuity.

Emergency Preparedness

Participants will receive training on how to help families and children cope with and prepare for emergencies. Emergencies such as natural disasters, house/building fires, and community violence will be discussed. Strategies for preparation will be shared using PBS and Sesame Street Characters and resources. Additional resources are provided that can help providers in helping grief-stricken children and families cope after a loss. There is a specific section of the training dedicated to COVID and its impact on families, as well as ideas for providers to support families.

MAKING THE MOST OF CLASSROOM INTERACTIONS (MMCI)

CLASS Group Coaching (MMCI) Infant Toddler

Making the Most of Classroom Interactions (MMCI) helps early childhood professionals engage with the Classroom Assessment Scoring System (CLASS) as they identify and understand the interactions that increase children's learning and development. Participants will learn how to use the CLASS observation tool to consider teaching practices and guide classroom video observations and real-life interactions.

CLASS Group Coaching (MMCI) Infant Toddler *Español*

Aprovechar al máximo las interacciones en el aula (MMCI) ayuda a los profesionales de la primera infancia a interactuar con el Sistema de puntuación de evaluación en el aula (CLASS) a medida que identifican y comprenden las interacciones que aumentan el aprendizaje y el desarrollo de los niños. Los participantes aprenderán a utilizar la herramienta de observación CLASS para considerar las prácticas de enseñanza y guiar las observaciones en video en el aula y las interacciones de la vida real.

CLASS Group Coaching (MMCI) PreK

CLASS group Coaching (MMCI) helps early childhood professionals engage with the Classroom Assessment Scoring System (CLASS) as they identify and understand the interactions that increase children's learning and development. Participants will learn how to use the CLASS observation tool for considering teaching practices and guiding observations of classroom videos and real-life interactions.

CLASS Group Coaching (MMCI) PreK en Español

Aprovechar al máximo las interacciones en el salón de clase (MMCI) ayuda a los profesionales de la primera infancia a participar con el Sistema de puntuación de evaluación del salón de clases (CLASS) mientras identifican y comprenden las interacciones que aumentan el aprendizaje y el desarrollo de los niños. Los participantes aprenderán a usar la herramienta de observación CLASS para considerar las prácticas de enseñanza y guiar las observaciones de los videos del aula y las interacciones de la vida real.

CHILD DEVELOPMENT

School Preparedness

Learners are provided with PBS digital resources for School Readiness, and ideas for activities both in the center and for families at home.

Traumatic Experiences

This training focuses on traumatic experiences that students may bring to learning centers and preschools. With helpful resources like the PBS online resources, participants can identify different traumas that children may experience, the behaviors that may be present after or during trauma, and how to help these children cope. Participants also discuss ways to work with families experiencing trauma. There is a specific section of the training dedicated to COVID and its impact on families, as well as ideas for providers to support families

Art Attack! Promoting Children's Creativity

This learning event will review the developmental stages of art for children birth through 9 years of age and examine how this informs appropriate expectations for their artwork. Learners will compare teacher-directed projects with child-directed art experiences, discuss how each affects children's development and learning, and discuss strategies for facilitating children's creativity and free-expression. Ultimately, learners will connect the provision of appropriate art experiences in the classroom with intentional, effective interactions (CLASS) with preschool children.

Master CLASS Toddler CLASS and Supporting Independence

What is the connection between encouraging toddlers' independence and helping them develop important basic skills? Toddlers need many meaningful opportunities to make decisions, develop responsibility, practice self-care skills, and engage with other toddlers...this interactive course is designed to give learners strategies to facilitate toddlers' competency in navigating and exploring their world. Using Toddler CLASS Dimensions as a guide, learners will explore how to adapt their current classroom practices and increase the intentionality of their interactions with children to promote autonomy and success in the classroom effectively.

FSU 10 Components of Quality Care for Infants and Toddlers- Comprehensive Support Services

This training is designed to link together the needs of children and families with services in the community. Infants, toddlers, and their families are strengthened when programs help link them to needed community support.

Master CLASS Toddlers and Centers

Participants learn how to set up, equip, and use their classroom centers to engage Toddlers in play-based instruction and effective interactions.

Mente en Proceso

Mente en Proceso consiste en una serie de 8 sesiones interactivas y reflexivas de dos horas. Los participantes examinarán las siete habilidades para la vida, basadas en investigaciones, que determinan el poderoso potencial para ayudar a los niños a tener éxito social, emocional e intelectualmente a corto y largo plazo. Estas siete habilidades para la vida incluyen: enfoque y autocontrol, toma de perspectiva, comunicación, hacer conexiones, pensamiento crítico, asumir desafíos y aprendizaje autodirigido y comprometido. Debido a que estas son habilidades que todos los adultos pueden enseñar y todos los niños pueden aprender, esta capacitación está abierta a todas las personas que trabajan con niños pequeños, incluidos los padres/cuidadores.

SCREENING AND ASSESSMENT

Introduction to Teaching Strategies Gold

Teaching Strategies Gold is an authentic, ongoing, observation-based assessment system that helps teachers and administrators focus on what matters most for children's success. This training explores the basic Gold platform, which allows documentation to be added and used to track a child's educational progress.

SCIENCE AND MATH

Early Childhood STEM

Learners are provided with PBS digital resources for Early Childhood STEM and ideas for activities in the center and for families at home.

Beyond Colored Water Bottles: Easy DIY Science/Nature Activities/Materials for PreK

Children learn science through trial and error. They need time to experiment, try things out, and think independently. This learning event will provide examples of activities and materials teachers can create for use in their classroom. Teachers will also be introduced to language that prompts open-ended questions.

Building Future Engineers through STEM

This training is specifically designed to incorporate all Dimensions of the PRE-K CLASS Observation and educate learners on how to solve design challenges with young children. In this training, Participants can make and tinker while learning how to conduct design challenges, which include Math and Literacy.

Construyendo Futuros Ingenieros Atraves de STEM

Esta capacitación está diseñada específicamente para incorporar todas las dimensiones de la observación de CLASE PRE-K y educar a los estudiantes sobre cómo resolver los desafíos de diseño con niños pequeños. Los practicantes tendrán la oportunidad de hacer y jugar mientras aprenden a realizar desafíos de diseño que incluyen matemáticas y alfabetización.

Steam

Children learn STEAM through trial and error. They need time to experiment, try things out, and think independently. This learning event will provide examples of activities and materials teachers can create for use in their classroom. Teachers will also be introduced to language that prompts open-ended questions.

QUALITY IMPROVEMENT PLAN

Quality Improvement Plan (QIP) Orientation

This course supports providers who are on a Quality Improvement plan to understand better what a Quality Improvement plan is, the different strategies that are available for QIPs, and the roles and responsibilities of participants who are placed on the QIP.

QUALITY ACTIVITIES FOR INFANT AND TODDLER CARE

THE HILLSBOROUGH INFANT & TODDLER INITIATIVE (HITI)

The Hillsborough Infant & Toddler Initiative (HITI) has impacted children and families in Hillsborough County for four years after launching in May 2019. The goals of the Initiative are to increase families' access to infant/toddler care in their local community and to improve the quality of care children and families receive.

For the fiscal year 2022-2023, twelve early childhood programs (7 centers, 5 FCCHs) executed contracts with the ELCHC to participate in the Initiative, with one center withdrawing in January 2023.

Infant/toddler quality efforts were achieved through infant/toddler staff professional development strategies, which included training, coaching, and technical assistance. Teachers and administrators at the participating sites completed over 670 professional development training hours. Improved quality at the sites was gauged by the variance in pre/post-School Readiness Program Assessment (SRPA) scores. The average pre-SRPA score for all programs having been assessed was 4.98, and the post-SRPA score for all non-exempt programs was 5.12.

During the year, six infant/toddler classrooms were opened, and 17 environments were enhanced with safe, age-appropriate materials, furnishings, and equipment.

HITI's impact on family's increased access to Infant/toddler care was captured by each program tracking their enrollment for the three targeted age groups. During the fiscal year 2022-2023, 139 infants and toddlers were newly enrolled in the participating HITI programs. Families became aware of open slots at the programs through marketing strategies implemented by the sites. The opening of new classrooms created space to provide care to children and families on center waitlists.

ANYTIME IS 3T'S TIME

Anytime is 3T's Time was launched in early childhood programs as a family engagement activity to impact infants and toddlers in Hillsborough County. Current and previous HITI programs were recruited to market Anytime is 3T's Time to their families. Parents of children birth to 3 then completed 7 online modules on the website that provided strategies to support their child's development at home. A certificate was then emailed to parents that qualified them to receive Discovery Kits based on their child's age, which were shipped to their home. As a result of this activity, 70 families completed the online modules, resulting in 91 children receiving Discovery Kits.

THE PRESCHOOL TO HOME LIBRARY PROJECT

The Preschool to Home Library Project was launched as a pilot program on May 1, 2023, through June 30, 2023, in 1 early childhood program in the county. The project focused on supporting language and literacy development by having parents engage in activities at the preschool each month to earn a book bin and books to create a home library. The pilot targeted children from birth to 36 months. During the pilot 24 library bins and 47 sets of books were issued to children and families for home libraries.



QUALITY ACTIVITIES FOR CHILDREN AGES 3 – 5 YEARS OLD

ON MY WAY TO KINDERGARTEN (OMW2K)

The OMW2K program is composed of two components: the anchor project called “5 for 5” and its spin-off “Literacy all Year”. The 5 for 5 program is designed to provide quick 5-minute activities in the 5 learning domains to families to continue bridging learning at home. The Literacy all Year program aims to create home libraries for children and is designed to equip preschool teachers with literacy materials and training to help close the literacy gap and better prepare children for kindergarten entry while also forming community partnerships with their neighboring elementary schools through a Zoom/Pen Pal program.

A total of four community 5 for 5 events were hosted for our families and providers, two of which are held at the Coalition and two that are held in the community. The events provided books to children as well as hands-on activities to support learning at home in the 5 learning domains: Physical, Literacy, STEM, Social Studies, and Social-Emotional. Children and families were able to take these activities and books home as well as connect with many community partners. The final 5 for 5 event provided 250 backpacks for our rising kindergarteners and topped 175 attendees.

The 2022-2023 contract year saw the launching of our Literacy all Year program. The ELCHC was able to on-board 4 programs with 5 Four-year-old classrooms and 4 Three-year-old classrooms. Classrooms received Big Book stands, a set of 10 Big Books, a fully stocked listening center with hardware, and lesson plans to accompany each big book. Additionally, the children in the Four-Year-old rooms received a full home library of the same titles from the big books provided to the teachers and take-home games to continue hands-on practice of literacy skills at home.

JUMPSTART

A total of 225 providers, with 268 teachers took part in participating in our Quarterly Jumpstart Your Class Community of Practices. 94% of those sites showed gains in their scores from the previous year, with a total of 100% of VPK programs achieving a 4.0 or higher. The average School Readiness Program Assessment score for providers who participated in Jumpstart was 5.15 with VPK providers who participated in our Jumpstart averaging a 5.01.

iSPY TAMPA BAY PROGRAM

The iSpy Tampa Bay Program is designed to introduce and engage young learners in the exciting world of STEM, equipping them with foundational skills and knowledge that will support their academic and career trajectories. During the 2022-2023 fiscal year, iSpy Tampa Bay reached 33 programs with a total of 705 children participating. Of the 33 programs participating there are 22 programs returning from year 1. Teachers and Directors participating are provided with on-sight coaching addressing their specific classroom and how to encourage loose item play using natural materials, specialized training to effectively teach STEM topics, and workshops and resource sharing helping teachers integrate STEM concepts into their lesson plans and classroom activities through the Communities of Practice throughout the year.

Research states children who receive access to cultural experiences before age 5 become lifelong learners. The goal of the iSpy Tampa Bay Program is to increase the exposure of local Tampa Bay attractions to SR/VPK providers and their families. By increasing children’s vocabulary and enhancing conceptual understanding of the world around them, nurturing natural curiosity in children, and encouraging family activities that invite children to observe, explore and investigate. Classroom environments were enhanced by providing programs with new materials and equipment. Annual passes were provided to the following local attractions: Zoo Tampa, Glazer Children’s Museum, and the Florida Aquarium for both the children and teachers participating and up to 4 family members may accompany the child or teachers for each visit. Professional development was provided that focuses on nurture critical thinking, problem-solving, creativity,



and collaboration skills through hands-on activities and projects.

Through the iSpy Tampa Bay Program teachers and directors completed over 300 hours of professional development, 61 classrooms received STEM and Science based materials to enhance learning and the classroom environment, the partnering attractions were visited by our providers and families over 1000 times from January-June of 2023 and \$34,250.00 were issued in stipends to teachers and directors for successful completion of the iSpy Tampa Bay program.

VOLUNTARY PRE-KINDERGARTEN PROGRAM

In 2023, 258 VPK Programs were offered a targeted professional development using the Frame Their Learning program to help promote Early Literacy and develop CLASS instructional support. Providers received Frame Their Learning Kits for their VPK classroom to assist in creating higher-quality teacher and child interactions as well as encouraging teachers to focus on high level and meaningful exchanges.

VPK programs across Hillsborough County completed the FAST Star Early Literacy Assessments for the first time. Each program completed 3 Progress Monitoring Windows. Between the Progress Monitoring Window 1 and Progress Monitoring Window 3 for the 2022-2023 School Year, students who scored "Kindergarten Ready" (Scaled Score: 690), increased by 44.82% (4,183 students). Hillsborough County saw an increase in students "At/Above Benchmark" by 18.03% (1,612 students) and students falling in the Intervention and Urgent Intervention benchmarks (Below the 24th Percentile) decreased by 12.34% between progress monitoring window 1 and 3.

MONITORING

The ELCHC Provider Supports Team monitors contracted School Readiness and Voluntary Prekindergarten (VPK) programs on-site to ensure contract compliance. Consequences for noncompliance are determined in accordance with State of Florida Rule and law as well as the ELCHC's Progressive Enforcement Procedures.

SCHOOL READINESS PROGRAM (SR)

Staff monitored to ensure each provider's program met the terms and conditions of the State of Florida Statewide Voluntary Prekindergarten (VPK) Provider Contract. ELCHC staff monitored private providers and Hillsborough County Public Schools (HCPS). *Hillsborough County Public Schools (HCPS) conducted the monitoring of HCPS Voluntary Prekindergarten schools.*

SCREENING AND SUPPORT SERVICES

The Early Learning Coalition of Hillsborough County (ELCHC) provides Screening and Support services to providers and families in Hillsborough County. The ELCHC Warm Line is available to all childcare centers, family childcare homes, and parents who seek assistance regarding childcare arrangements or concerns for their children with special needs.

FY 2022- 2023 the ELCHC Warm Line Services provided documented support to approximately 212 Families and Childcare Providers.

Each year, all children in the School Readiness (SR) program age birth-kindergarten entry are screened for developmental concerns using the Ages and Stages Questionnaire 3 (ASQ-3). The results of the ASQ-3 are reported to the ELCHC's Screening and Support Team for follow-up. This follow-up may include intervention support plans, additional developmental and behavioral screening, and referral for development evaluation. During the 2022-2023 fiscal year, the ELCHC expanded Screening and Support services by adding two (2) Behavior Support Specialists to address the increasing need for Social Emotional and Behavior Support requested by the early childhood SR community in an attempt to decrease expulsion rates. This allowed the ELCHC screening staff to develop an intervention plan that focuses on the whole child and all areas of development.

FY 2022-2023 THE ELCHC SCREENING AND SUPPORT TEAM PROCESSED ALMOST 15,500 ASQ'S:

ASQ-3: **9,499**

ASQ-SE: **5,232**

ADDITIONAL SUPPORTS ISSUED

Intervention Support Plans assist families and providers in supporting areas of developmental concern per the ASQ-3 screening results.



Intervention Support Plans: **2,289**

Birth-5 Years Old - Developmental Evaluation Referral to Early Steps: **156 Children**

3-5 Years Old - Developmental Evaluation Referral to Hillsborough County Public School Child Find: **190 Children**

ELCHC worked with the Early Childhood Council to provide thirty (30) classrooms with supportive coaching, training, and materials to build their capacity to provide adaptations for children with special needs.

Utilizing Preschool Development Grant funding, the ELCHC distributed 200+ Pyramid kits to childcare providers. These kits aim to increase positive social-emotional experiences at home and in the childcare community. A community partner, the University of South Florida- PWPBS, collaborated with the ELCHC to provide training in implementing the practices.

DATA SUMMARY

CHILDREN SERVED IN SCHOOL READINESS

The information on the following pages is based on data collected from July 1, 2022 - June 30, 2023.

The chart on the next pages represents the number of children served in the School Readiness Program by age, priority in which served, and provider type. This The final column on the chart reflects the average enrollment by category for the funding year.



CHILDREN SERVED IN SCHOOL READINESS PROGRAMS

2022													
2023													
CATEGORIES	JUL	AUG	SEP	OCT	NOV	DEC	JAN	FEB	MAR	APR	MAY	JUN	MONTHLY AVERAGE
1. Licensed Private Centers	9,745	10,174	9,807	9,876	10,184	10,059	10,487	10,417	10,731	10,631	10,681	10,023	10,235
01 TCA	66	60	50	47	66	61	44	35	39	42	40	58	49
0-2 Years	21	20	16	16	25	19	14	11	16	18	17	12	17
02 At Risk < 9	1,364	1,380	1,319	1,320	1,334	1,278	1,303	1,330	1,346	1,340	1,356	1,329	1,333
03 Econ Disadvantage < SCH Age	5,891	5,706	5,520	5,689	5,808	5,816	6,167	6,213	6,471	6,512	6,474	6,214	6,040
04 TCC < SCH Age	36	34	35	39	41	40	53	46	43	38	38	34	40
05 At Risk Age 9-12	87	102	82	81	85	86	82	77	92	75	83	74	84
06 Econ Disadvantage - SCH Age	2,263	2,826	2,741	2,642	2,790	2,720	2,777	2,661	2,687	2,570	2,643	2,307	2,636
07 TCC SCH Age	28	28	21	20	19	16	19	12	9	9	7	8	16
09 Head Start and VPK	0	26	29	29	31	32	31	29	29	29	24	0	24
08 Special Needs	10	12	10	9	10	10	11	14	15	16	16	17	13
3. Large Family Child Care Home	281	288	298	299	303	296	312	305	317	320	324	318	305
01 TCA	1	0	0	0	0	0	0	0	0	0	0	0	0
02 At Risk < 9	19	23	27	22	23	22	23	20	18	19	21	19	21
03 Econ Disadvantage < SCH Age	205	204	212	214	215	211	225	228	243	250	252	254	226
04 TCC < SCH Age	1	1	1	0	0	0	0	0	0	0	0	0	0
05 At Risk Age 9-12	1	1	0	0	0	0	0	0	0	0	0	0	0
06 Econ Disadvantage - SCH Age	52	56	54	63	65	63	63	56	55	50	50	44	56
07 TCC SCH Age	2	3	3	0	0	0	0	0	0	0	0	0	1
08 Special Needs	0	0	1	0	0	0	1	1	1	1	1	1	1
4. Licensed Family Child Care Home	649	619	640	654	670	668	664	654	638	650	628	632	647
01 TCA	9	5	4	8	7	8	7	6	6	2	2	5	6
02 At Risk < 9	62	63	57	55	59	55	57	58	53	58	52	51	57
03 Econ Disadvantage < SCH Age	412	363	385	401	411	416	414	414	417	430	416	415	408
04 TCC < SCH Age	1	2	2	3	3	3	1	1	1	2	2	2	2
05 At Risk Age 9-12	6	5	5	5	4	3	2	2	1	0	0	1	3
06 Econ Disadvantage - SCH Age	158	180	186	179	183	180	180	170	157	155	153	155	170
07 TCC SCH Age	0	0	0	1	1	1	1	1	1	1	1	1	1
08 Special Needs	1	1	1	2	2	2	2	2	2	2	2	2	2

2022							2023						
CATEGORIES	JUL	AUG	SEP	OCT	NOV	DEC	JAN	FEB	MAR	APR	MAY	JUN	MONTHLY AVERAGE
7. Public School	423	908	1,069	1,139	1,132	1,139	1,193	1,195	1,240	1,247	1,239	646	1,048
01 TCA	2	7	5	4	4	4	6	7	7	6	8	8	6
02 At Risk < 9	21	43	56	67	71	62	71	72	74	66	68	32	59
05 At Risk Age 9-12	10	20	29	32	31	28	36	38	44	46	47	29	33
06 Econ Disadvantage - SCH Age	389	831	970	1,025	1,015	1,034	1,072	1,071	1,108	1,122	1,112	576	944
07 TCC SCH Age	1	7	9	11	11	11	8	7	7	7	4	1	7
2. License - Exempt Centers	111	347	376	375	380	349	374	365	382	386	354	92	324
01 TCA	2	0	0	1	0	0	0	0	2	2	2	0	1
02 At Risk < 9	17	42	42	38	39	32	40	41	38	40	34	5	34
03 Econ Disadvantage < SCH Age	68	67	71	73	74	62	70	66	85	71	76	76	72
04 TCC < SCH Age	2	2	0	0	2	2	2	2	2	2	2	2	2
05 At Risk Age 9-12	0	7	8	12	14	11	16	17	18	19	18	0	12
06 Econ Disadvantage - SCH Age	22	229	255	251	251	242	246	239	237	252	222	9	205
6. Private School	5	13	10	31	28	27	28	27	22	21	18	13	20
02 At Risk < 9	0	0	0	0	1	1	1	1	1	1	0	0	1
03 Econ Disadvantage < SCH Age	0	4	4	4	6	6	6	6	6	5	4	0	4
06 Econ Disadvantage - SCH Age	5	9	6	27	21	20	21	20	15	15	14	13	16
School Age	5	9	6	27	21	20	21	20	15	15	14	13	16
Monthly Total	11,214	12,349	12,200	12,374	12,697	12,538	13,058	12,963	13,330	13,255	13,244	11,724	12,579

Data is from the EFS Modernization Database as of August 17, 2023.

CHILD DISENROLLMENT

Total number of children disenrolled from Child Care Provider during the year and the reasons for disenrollment.

REASON FOR DISENROLLMENT	NUMBER OF CHILDREN DISENROLLED
Child care provider dismisses child due to child's behavior	52
Child care provider does not meet parent's or guardian's expectations	54
Child care provider has closed for economic or other business reasons	27
Child care setting not challenging enough for child	3
Child care setting provided too much stimulation for the child	5
Child deceased	3
Child has a duplicate record	1
Child has exceeded the age-limit for services	48
Child is no longer residing with the guardian who completed the initial application New paperwork must be completed by new guardian	78
Child poses safety risk to other children at program	10
Child was determined eligible for services but never enrolled with a child care provider	31
Client deceased	15
Client does not show up for redetermination	184
Client failed to comply with program requirements	6
Client failed to provide required documentation to maintain eligibility	9
Client is eligible for services under a different funder (i.e., non funder 1)	1
Client is no longer eligible for services because the family income exceeds the allowable amount for eligibility	89
Client moved out of the county in which funding is currently provided	125
Client no longer has a valid purpose for care	289
Client's contact information is no longer valid and fails to provide updated information by a specified date	11
Custodian is involved in seasonal work (such as migrant or school district employees) and the child's enrollment is temporarily suspended while custodian is not working	430
Parent declined Terms and Conditions	11
Parent or guardian lacks resources necessary to keep child in care	34
Parent/guardian withdrew child from the program	2,078
Physical limitations of child care provider	4
Provider dismissed child for noncompliance with the provider's attendance policy	560
Provider dropped child from the provider's program	226
Provider no longer receiving SR or VPK funds due to noncompliance or low performance	189
Provider remains open, but no longer provides VPK or SR services.	46
Referral from referring agency has expired.	189
Referring agency has terminated the referral.	23
Suspected Fraud Case.	23
The enrollment record was updated.	1,179
The next authorization period was approved.	54
The program where the child was receiving services changed ownership. The new owner has a new provider record.	25
Transfer from one SR funding source to another (i.e. BG3 to BG8).	30
Transfer to another provider record (even if the second record is owned by the same provider).	115
TOTAL	6,257

Data is from the EFS Modernization Database as of August 17, 2023.

PROVIDER TYPE

Total number of providers by provider type.

PROVIDER TYPE	TOTAL PROVIDERS	OFFERED SR ONLY	OFFERED VPK ONLY	BOTH
1. Licensed Private Centers	416	96	110	210
2. License-Exempt Centers	38	33	2	3
3. Large Family Child Care Home	57	50	1	6
4. Licensed Family Child Care Home	179	177	1	1
6. Private School	21	2	17	2
7. Public School	168	60	36	72
TOTAL	879	418	167	294

Data is from the EFS Modernization Database as of August 17, 2023.



SCHOOL READINESS PROVIDER REVOCATION

PROVIDER NAME	ADDRESS	CITY	COUNTY	PROVIDER TYPE	NARRATIVE
					Threatened Life-Saving
					and safety of children
					1
					abuse charge

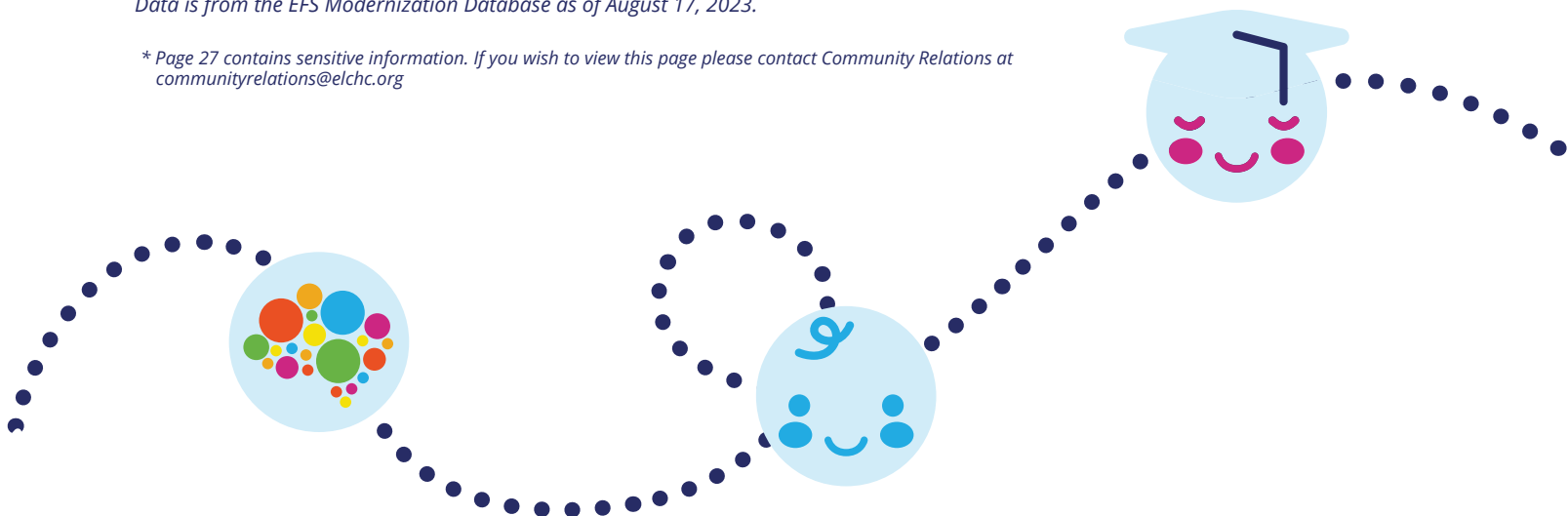
Data is from the EFS Modernization Database as of August 17, 2023.

VOLUNTARY PREKINDERGARTEN PROVIDER REVOCATION

PROVIDER NAME	ADDRESS	CITY	COUNTY	PROVIDER TYPE	NARRATIVE
[REDACTED]	[REDACTED]	[REDACTED]	[REDACTED]	[REDACTED]	[REDACTED]
[REDACTED]	[REDACTED]	[REDACTED]	[REDACTED]	[REDACTED]	[REDACTED]
[REDACTED]	[REDACTED]	[REDACTED]	[REDACTED]	[REDACTED]	[REDACTED]
[REDACTED]	[REDACTED]	[REDACTED]	[REDACTED]	[REDACTED]	[REDACTED]

Data is from the EFS Modernization Database as of August 17, 2023.

* Page 27 contains sensitive information. If you wish to view this page please contact Community Relations at communityrelations@elchc.org



CHILDREN SERVED BY PROVIDER

PROVIDER NAME	ADDRESS	CITY	CHILDREN SERVED		
			UNDUPLICATED TOTAL	SCHOOL READINESS	VPK
3 THREE LETTERS LEARNING CENTER	6710 N ARMENIA AVE	TAMPA	31	31	0
A + LEARNING CENTER	1109 W GRANT ST	PLANT CITY	124	124	0
A BRIDGE OF LEARNING, CHILD DEVELOPMENT & LEARNING CENTER	3902 CORPOREX PARK DR SUITE 100	TAMPA	42	42	0
A BRIGHTER COMMUNITY, INC.	1613 N MARION ST	TAMPA	27	16	16
A CHILDREN'S KASTLE E.L.C. INC. AT WINTHROP	11297 WINTHROP MAIN ST	RIVERVIEW	19	19	0
A CHILD'S HAVEN PRIVATE PRESCHOOL	1520 BRENTWOOD HILLS BLVD	VALRICO	90	30	66
A CHILD'S WORLD LEARNING ACADEMY II	8474 W HILLSBOROUGH AVE	TAMPA	152	138	22
A CHILD'S WORLD LEARNING ACADEMY, INC.	3223 ALENE ST	TAMPA	218	201	32
A LITTLE KIDS ACADEMY	11105 E US HIGHWAY 92	SEFFNER	152	152	0
A PERFECT START EARLY LRNG CHILDCARE CTR	2005 E 21ST AVE	TAMPA	59	59	0
A READINESS LEARNING ACADEMY INC	489 APOLLO BEACH BLVD	APOLLO BEACH	81	61	25
A TODAY'S CHILD	2150 W. DR. M.L. KING JR. BLVD	TAMPA	80	76	11
A.J.'S ANGELS II	1139 1ST ST NW	RUSKIN	97	85	20
ABRAHANTES, DANIA	4411 W HANNA AVE	TAMPA	2	2	0
ACADEMY FOR LITTLE SCHOLARS	1216 E LINEBAUGH AVE	TAMPA	39	39	0
ACADEMY OF ACHIEVERS	536 MAYDELL DR	TAMPA	46	33	19
ACADEMY OF BRANDON	722 LITHIA PINECREST RD	BRANDON	70	66	9
ACADEMY OF MONTESSORI INTERNATIONAL INC	15421 MORRIS BRIDGE RD	THONOTOSASSA	15	0	15
ACADEMY OF TAMPA D/B/A/ THE VILLAGE C.C.C.	1206 E. 124TH STREET	TAMPA	107	107	0
ACADEMY OF TAMPA DBA KIDS CORNER	5511 N. 40TH STREET	TAMPA	152	146	11
ACADEMY OF TAMPA DBA UNIVERSITY CCC	1902 E. 131ST AVENUE	TAMPA	175	175	0
ACADEMY OF TAMPA DBA WEE CARE	1823 E. 142ND AVE.	TAMPA	118	118	0
ACADEMY OF TAMPA INC. D/B/A CHILDREN'S DISCOVERY	13101 N. 23RD STREET	TAMPA	283	276	19
ACHIEVEMENT CENTER	4601 E BUSCH BLVD	TAMPA	236	236	0
ACHIEVEMENT CENTER DALE MABRY	5714 S DALE MABRY HWY	TAMPA	166	166	0
AEA WESTCHASE LLC	8080 COUNTRYWAY BLVD	TAMPA	44	0	44
ALBERTINA PEREZ-GONZALEZ DBA ALBERTINA'S CHILD CARE, LLC	3105 W ABDELLA ST	TAMPA	2	2	0
ALEXANDRA, FELICIA RENA DBA GOLDEN HANDS CHILDCARE	6920 TROUT ST	TAMPA	6	6	0

Data is from the EFS Modernization Database as of August 17, 2023.

PROVIDER NAME	ADDRESS	CITY	CHILDREN SERVED		
			UNDUPLICATED TOTAL	SCHOOL READINESS	VPK
ALEXIS, MAUREEN V	12305 N TALIAFERRO AVE	TAMPA	4	4	0
ALFONSO ALVAREZ, LIZET	7915 WOODGLEN CIR	TAMPA	5	5	0
ALFORD AND ASHE ACADEMY	7739 GIBSONTON DR	GIBSONTON	70	66	15
ALL 4 KIDS LEARNING CENTER	608 E MORGAN ST	BRANDON	22	18	6
ALL GODS KIDS ACADEMY	6501 N CENTRAL AVE	TAMPA	118	118	0
ALL NATIONS ACADEMY	10022 CHRISTINA DRIVE	RIVERVIEW	22	0	22
ALPHABET LEARNING CENTER INC.	4423 KELLY RD	TAMPA	63	54	18
ALVAREZ VAZQUEZ, JUANA DBA FCCH FANTASIAS	5108 SALEM ST	TAMPA	9	9	0
AMARO IBANEZ, YOLEIVI	1511 W KNOLLWOOD ST	TAMPA	6	6	0
AMARO REYNIER, ADELYN	9122 CAMINO VILLA BLVD	TAMPA	9	9	0
AMERICAN MONTESSORI PREP SCHOOL LLC	15102 AMBERLY DR	TAMPA	9	0	9
AMERICAN YOUTH ACADEMY	5905 E 130TH AVE	TAMPA	46	0	46
ANDERSON, JENNIFER C.	2434 WISHING WELL CIR	TAMPA	27	27	0
ANDES SMART ACADEMY LLC	19215 LIVINGSTON AVE.	LUTZ	50	32	21
ANOTHER HOME DAYCARE CENTER LLC	706 N PARSONS AVE	BRANDON	9	0	9
APOLLO BEACH CHRISTIAN PRESCHOOL	6414 GOLF AND SEA BLVD	APOLLO BEACH	56	0	56
ARAGON TORRIJOS, AYSIS	3226 LAS BRISAS DR	RIVERVIEW	3	3	0
ARENAS, FACUNDA U	3901 W OKLAHOMA AVE	TAMPA	7	7	0
ARGUELLES SILVA, REINA DBA TINY FLOWERS HOME DAYCARE LLC	4827 ALVARADO DR	TAMPA	4	4	0
AUTUMN LEAF ACADEMY	3007 S. DANIELS ROAD	PLANT CITY	58	50	15
B & G DAY CARE AND KINDERGARTEN INC.	14419 DR MLK BOULEVARD	DOVER	29	23	10
BABY STEPS EARLY STEPS	811 S CASTLE COURT	TAMPA	36	36	0
BACKYARD BEARS DAY SCHOOLS	6602 N HABANA AVE	TAMPA	134	106	35
BAKANANSA FARIDAH DBA AMERICAN HOME CHILD DC LLC	7110 N WHITTIER ST	TAMPA	6	6	0
BALLOON, SAMEESE L. DBA DEVINED LITTLE STEPS	2004 E HAMILTON AVE	TAMPA	14	11	4
BAMBOO BAMBINO LEARNING ACADEMY	914 N CASTLE CT	TAMPA	34	34	0
BARR, RHONDA F DBA NURTURED SPROUTS CC	2117 W KIRBY ST	TAMPA	10	10	0
BARRERO ANDRIA I	2501 KRUEGER LN	TAMPA	12	12	0
BARRIERA JIMENEZ, MARLYN DBA CHILDREN'S TREE HOUSE	7001 ALMENDARIZ WAY	TAMPA	1	1	0
BARRIOS CABRERA, MARIA M.	2911 W BRADDOCK ST	TAMPA	1	1	0
BAY HOPE DAY SCHOOL	17030 LAKESHORE RD	LUTZ	103	0	103
BAYCREST ACADEMY AT BRANDON	202 PAULS DR	BRANDON	82	73	12
BAYCREST ACADEMY CHILD CARE CENTER I	105 W MLK BLVD	TAMPA	96	96	0
BELL SHOALS BAPTIST ACADEMY	2102 BELL SHOALS RD	BRANDON	54	0	54
BELLO-ESTRADA, BELKIS Y.	6021 WILSHIRE DR	TAMPA	6	6	0

Data is from the EFS Modernization Database as of August 17, 2023.

PROVIDER NAME	ADDRESS	CITY	CHILDREN SERVED		
			UNDUPLICATED TOTAL	SCHOOL READINESS	VPK
BEST FRIENDS FOR KIDZ LEARNING LABORATORY	408 E LUMSDEN RD	BRANDON	161	143	30
BETHUNE, ANGELENA M	514 9TH STREET NORTHEAST	RUSKIN	2	2	0
BIBLE TRUTH MINISTRIES ACADEMY	4902 N 22ND ST	TAMPA	35	31	7
BIBLE TRUTH MINISTRIES INTL, INC. SCHOOL AGE	4902 N 22ND ST	TAMPA	19	19	0
BIBLE-BASED FELLOWSHIP CHILD CARE CENTER	8718 N 46TH ST	TEMPLE TERR	83	73	20
BIONDOLILLO, ALANA DBA THE B HIVE HOME DAYCARE	2303 WASHINGTON RD	VALRICO	1	1	0
BLAIR, MARGARET DIANE	1611 HARTLEY RD	TAMPA	2	2	0
BLOOMINGDALE CHILDREN'S HOUSE	3920 S KINGS AVE	BRANDON	15	0	15
BOCC BEALSVILLE HEAD START CENTER	5100 HORTON ROAD	PLANT CITY	7	0	7
BOCC BRANDON COMMUNITY HEAD START	9547 E. COLUMBUS DRIVE	TAMPA	26	0	26
BOCC DEBORAH MCNAIR-CALHOUN HS/EHS	2911 E. HENRY STREET	TAMPA	32	0	32
BOCC DELORIS MCCLOUD HEAD START	2103 N. ROME AVENUE	TAMPA	42	0	42
BOCC GRANT PARK HEAD START	4422 E COLUMBUS DR	TAMPA	17	0	17
BOCC JACKSON SPRINGS HEAD START	7345 JACKSON SPRINGS ROAD	TAMPA	19	0	19
BOCC LA PALOMA HEAD START	3419 N. NEBRASKA	TAMPA	21	0	21
BOCC LEE DAVIS HEAD START	3402 N 22ND ST	TAMPA	14	0	14
BOCC MANGO HEAD START/EHS	11210 E. BROADWAY AVENUE	SEFFNER	39	0	39
BOCC MOSI HEAD START & PRESCHOOL CENTER	4901 E. FOWLER AVENUE	TAMPA	25	0	25
BOCC NORTH TAMPA COMMUNITY HEAD START	14013 N. 22ND AVENUE	TAMPA	48	0	48
BOCC NYE PARK HEAD START	630 SUNSET LANE	LUTZ	13	0	13
BOCC PLANT CITY HEAD START CENTER	1304 ALSOBROOK STREET	PLANT CITY	17	0	17
BOCC ROBLES PARK HEAD START CENTER	3814 N. CENTRAL AVENUE	TAMPA	22	0	22
BOCC SOUTH COUNTY HEAD START CENTER	215 SE. 14TH AVENUE	RUSKIN	29	0	29
BOCC STRAWBERRY HILLS HS EHS	701 TILLMAN PLACE	PLANT CITY	8	0	8
BOCC TOWN AND COUNTRY COMMONS HDST	7606 PAULA DRIVE	TAMPA	34	0	34
BONNEBAL, KATIA DBA KATY'S KID CAVE LLC	8333 FOUNTAIN AVE	TAMPA	11	11	0
BOWEN, YENNY M. DBA YCDC LLC	15114 CARLTON LAKE ROAD	WIMAUMA	3	3	0
BRADLEY, ROSALIND (LISA) DBA BRADLEY'S LITTLE ANGEL	3004 LAUREL LN	PLANT CITY	6	6	0
BRIDGES AT WESLEY EARLY LEARNING CENTER	6100 MEMORIAL HIGHWAY	TAMPA	25	0	25
BRIGHT HORIZONS AT TAMPA GENERAL	25 COLUMBIA DR	TAMPA	16	0	16
BRIGHT HORIZONS CHILDREN'S CENTER- HUNTER'S OAK	18002 HUNTERS OAK CT	TAMPA	42	0	42
BRIGHT HORIZONS CHILDREN'S CENTERS- TAMPA PALMS	5171 CYPRESS PRESERVE DR	TAMPA	35	0	35

Data is from the EFS Modernization Database as of August 17, 2023.

PROVIDER NAME	ADDRESS	CITY	CHILDREN SERVED		
			UNDUPLICATED TOTAL	SCHOOL READINESS	VPK
BRIGHT STARS CHILDCARE & EARLY LEARNING CENTER LLC	325 WEST BUSCH BLVD -	TAMPA	107	105	6
BRIGHT STARS LEARNING ACADEMY	7815 TIDEWATER TRL	TAMPA	58	58	0
BRIGHTER DAYS LLC D/B/A STEPPING STONE	5506 E KIRBY ST	TAMPA	175	166	16
BRIGHTER DAYS-HWY 92	11825 E US HIGHWAY 92	SEFFNER	164	145	27
BRIGHTER DAYS-LAKEWOOD	119 S LAKEWOOD DR	BRANDON	142	131	19
BRIGHTER DAYS-PARSONS	1502 N PARSONS AVE	BRANDON	101	95	13
BROOKINS, STEPHANIE Y.	4108 E FERN ST	TAMPA	11	11	0
BRUCE, DESIREE A.	1949 GREGORY DR	TAMPA	3	3	0
BRYANT, NIKIAH FAMILY CHILD CARE HOME	1125 W ARCH ST	TAMPA	6	6	0
BURNEY, ALISON D.	444 DUNAWAY DR	VALRICO	5	5	0
BUTLER, JEANNETTE JONES	10029 MERRY FAWN COURT	SUN CITY CENTER	4	4	0
CABRERA HERNANDEZ, LESYANE	8917 SABODA CT	TAMPA	4	4	0
CABRERA, MARIA J.	6425 AMUNDSON STREET	TAMPA	3	3	0
CAMPBELL, CATHERINE ANN	8610 TUPELO DR	TAMPA	10	10	0
CAMPBELL, LATONYA S.	203 W BOUGAINVILLEA AVE	TAMPA	12	12	0
CARE BEARS LEARNING ACADEMY LLC	115 MARGARET ST STE A	BRANDON	78	78	0
CARE-A-LOT CHILD CARE CENTER, INC.	4002 W HUMPHREY ST	TAMPA	16	16	0
CARLTON ACADEMY DAY SCHOOL	205 N BRUSH ST	TAMPA	20	0	20
CARR, GWENDOLYN M. DBA INFINITY HOUSE OF LOVE	1806 E 115TH AVE	TAMPA	23	23	0
CARRERAS FERNANDEZ, ALIAGNA	8909 BRIAR HOLLOW CT	TAMPA	2	2	0
CARRERO, ANA R. DBA SWEET DREAMS F.C.C.	2105 W FLORA ST	TAMPA	8	8	0
CARRILLO, MARIA E.	10909 RIVERVIEW DR	RIVERVIEW	15	11	9
CARRILLO-OCCHOA, ANTONIA	310 E 120TH AVE	TAMPA	6	6	0
CARROLLWOOD VILLAGE KIND. & DAY NURSERY INC.	4405 EHRlich RD	TAMPA	27	27	0
CASITA 4 KIDS LEARNING CENTER LLC	7415 DESTIN DR	TAMPA	23	23	0
CASTANO, SANDY	8009 DELL DR	TAMPA	6	6	0
CASTILLO, SANDRA DBA SANDRA'S FAMILY CC INC	8532 BRIAR GROVE CIR	TAMPA	5	5	0
CASTILLO-ALFONSO, MAITE	209 W AZALEA AVE	TAMPA	2	2	0
CASTLES OF IMAGINATION	820 BRYAN RD	BRANDON	66	66	0
CATHERINE'S EARLY LEARNING ACADEMY	11418 BLOOMINGDALE AVE	RIVERVIEW	38	34	10
CENTRAL BAPTIST CHRISTIAN SCHOOL	402 E WINDHORST ROAD	BRANDON	12	0	12
CFM ROSA VALDEZ CENTER AT OAK GROVE	2707 W WATERS AVE	TAMPA	31	31	0
CFM-ROSA VALDEZ CENTER	1802 N ALBANY AVE	TAMPA	52	48	13
CHARLES, MARQUILA J.	1013 E 12TH AVE	TAMPA	9	9	0
CHECA VALDIVIA, WENDY L. DBA SMILE HOME DAY CARE	10515 BLACKMORE DR	TAMPA	1	1	0
CHILDCARE OF BRANDON	730 BRANDON TOWN CENTER DR	BRANDON	47	0	47

Data is from the EFS Modernization Database as of August 17, 2023.

PROVIDER NAME	ADDRESS	CITY	CHILDREN SERVED		
			UNDUPLICATED TOTAL	SCHOOL READINESS	VPK
CHILDCARE OF BRANDON BIG BEND	6050 BIG BEND ROAD	GIBSONTONT	33	0	33
CHILDCARE OF BRANDON BLOOMINGDALE HILLS	10811 BLOOMINGDALE AVE	RIVERVIEW	37	0	37
CHILDCARE OF BRANDON BROADWAY	11002 E BROADWAY AVE	SEFFNER	99	82	29
CHILDCARE OF BRANDON LITHIA	3105 LITHIA PINECREST RD	VALRICO	33	0	33
CHILDCARE OF BRANDON LYNWOOD	5063 WHITE CHICORY DR	APOLLO BEACH	17	0	17
CHILDCARE OF BRANDON MISSOURI	10710 MISSOURI AVE	RIVERVIEW	33	0	33
CHILDLIFE PRESCHOOL-CARROLLWOOD/CITRUS PARK	13140 LYNN RD	TAMPA	98	58	46
CHILDLIFE PRESCHOOL-COUNTRYWAY/WESTCHASE	11201 W WATERS AVE	TAMPA	62	38	28
CHILDREN FIRST ACADEMY ORG.	9129 MEMORIAL HWY	TAMPA	28	28	0
CHILDREN OF THE WORLD ACADEMY I INC.	6033 MEMORIAL HWY	TAMPA	96	90	10
CHILDREN OF THE WORLD ACADEMY II INC.	8731 JACKSON SPRINGS RD	TAMPA	142	117	41
CHILDREN OF THE WORLD ACADEMY III INC	4901 N HABANA AVE	TAMPA	102	82	31
CHILDREN'S ACADEMY FISHHAWK	10560 BROWNING RD	LITHIA	80	52	31
CHILDREN'S ACADEMY INC.	506 LIMONA RD	BRANDON	109	63	54
CHILDREN'S ARK EARLY LEARNING	950 S MULRENNAN RD	VALRICO	90	68	27
CHILDREN'S LAND OF IMAGINATION ACADEMY	17409 GUNN HWY	ODESSA	40	26	17
CHILDREN'S NEST DAY SCHOOL - 62ND ST	11504 N 62ND ST	TEMPLE TERR	89	70	30
CHILDREN'S NEST DAY SCHOOL - BRYAN	3221 BRYAN RD	BRANDON	116	89	36
CHILDREN'S NEST DAY SCHOOL - DELEON	2601 W DE LEON ST	TAMPA	41	19	26
CHILDREN'S NEST DAY SCHOOL - JACKSON SPRINGS	7345 JACKSON SPRINGS RD	TAMPA	36	23	16
CHILDREN'S NEST DAY SCHOOL - MAPLEDALE	15713 MAPLEDALE DR	TAMPA	66	41	30
CHILDREN'S NEST DAY SCHOOL - MENDONSA	1311 MENDONSA RD	PLANT CITY	114	85	38
CHIPP, CYNTHIA A DBA HEAVENLY ANGELS FAMILY CHILD CARE HOME	1502 HEATHER AVE	TAMPA	21	21	0
CHIRINO, LILLIAM R DBA LILY'S DAYCARE LLC	4544 W FERN ST	TAMPA	15	15	0
CIRCA LRNG CTR/DBA KIDS R KIDS #15	5815 KIDS CROSSING DR	LITHIA	54	0	54
CIRCLE C RANCH ACADEMY	6204 INTERBAY BLVD	TAMPA	57	0	57
CITIGROUP FAMILY CENTER	3701 QUEEN PALM DRIVE	TAMPA	13	0	13
CITRUS PARK DAY SCHOOL	11112 HENDERSON RD	TAMPA	133	85	60
CITRUS PARK DAY SCHOOL NORTH	11602 N HENDERSON ROAD	TAMPA	15	15	0
CLARK, SHANNON L	8707 N WICK PL	TAMPA	9	9	0
CLIMBING THE LATTA CHILDCARE LLC	1609 E LOUISIANA AVE	TAMPA	49	49	0
COGIC DEVELOPMENTAL CHILD CARE CENTER, INC. DBA COLLEGE HILL COGIC PRESCHOOL	1002 E. MLK BLVD.	TAMPA	67	63	6

Data is from the EFS Modernization Database as of August 17, 2023.

PROVIDER NAME	ADDRESS	CITY	CHILDREN SERVED		
			UNDUPLICATED TOTAL	SCHOOL READINESS	VPK
COLLAZO, YIGSYS DBA WORLD OF COLORS	9022 TREE VALLEY CIR	TAMPA	10	10	0
COLLINS, CAROLYN J.	8422 N RIVER DUNE ST	TAMPA	12	12	0
COPELAND, CHEMETRIA Y.	8317 CROTON AVE	TAMPA	6	6	0
COUNTRY WAY VILLAGE CHILD CARE, INC.	8810 W NORFOLK ST	TAMPA	40	40	0
CREATIVE KIDZ LEARNING ACADEMY	6130 FLORENCE ST	GIBSONTOWN	66	55	13
CREATIVE LEARNING ACADEMY	5557 W WATERS AVE	TAMPA	101	78	26
CREATIVE LEARNING ACADEMY ARMENIA	7912 N ARMENIA AVE	TAMPA	48	41	11
CREATIVE WORLD CAUSEWAY	9815 CAUSEWAY BLVD	TAMPA	174	126	64
CREATIVE WORLD FISHHAWK	5525 OSPREY RIDGE DR	LITHIA	71	29	43
CREATIVE WORLD RIVERVIEW	11361 SYMMES RD	RIVERVIEW	93	12	82
CREATIVE WORLD SCHOOL APOLLO BEACH	5931 FROND WAY	APOLLO BEACH	220	119	116
CREATIVE WORLD SCHOOL CROSS CREEK	10693 CROSS CREEK BLVD	TAMPA	61	0	61
CREATIVE WORLD SCHOOL TAMPA PALMS	5365 PRIMROSE LAKE CIR	TAMPA	57	0	57
CROSSROADS BAPTIST CHURCH OF LITHIA INC	10405 S COUNTY ROAD 39	LITHIA	33	28	10
CURBELO, YDELSA	7012 COBBLEWOOD CT	TAMPA	8	8	0
CURRY, DAYNA W DBA DREAMLAND CHILDCARE LLC	1810 HEATHER AVE	TAMPA	18	18	0
DAVIS, PRECIOUS Y.	1110 FERLITA WAY	TAMPA	7	4	4
DE LA ROSA DE LA ROSA,NELIA	6405 BROOK HOLLOW CT	TAMPA	6	6	0
DE LA ROSA, BARBARA	3407 W KIRBY ST	TAMPA	10	10	0
DE LA ROSA, DIUSMARI	2612 ARMENIA CT	TAMPA	2	2	0
DEAN, ROBIN DBA NANA'S LEARNING POST	3709 CASABA LOOP	VALRICO	6	1	5
DEL VALLE-MORENO, YURITZA DBA MY CARROUSELL FCCH	14502 FARM HILLS PL	TAMPA	15	15	0
DIAZ CABRERA, CARMEN	8706 N PACKWOOD AVE	TAMPA	2	2	0
DIAZ, MARIUSKA DBA DONDE SIEMPRE BRILLA EL SOL LLC	406 W SITKA ST	TAMPA	3	3	0
DIAZ, YUSIMI	13101 N ROME AVE	TAMPA	1	1	0
DIAZ-DELGADO, MIRTHA	4537 W HENRY AVENUE	TAMPA	3	3	0
DIAZ-ESPINOSA, YAIMA	4530 W HIAWATHA ST	TAMPA	4	4	0
DISCOVERY POINT #54	3472 KINGS COMMERCIAL CT	VALRICO	104	64	45
DISCOVERY POINT #70	13011 SUMMERFIELD CROSSING BLVD	RIVERVIEW	57	0	57
DISCOVERY POINT CHILD DEVELOPMENT CENTER #60	11719 SYMMES RD	RIVERVIEW	39	0	39
DISCOVERY POINT DEVELOPMENT CENTER 34	5203 W LUTZ LAKE FERN RD	LUTZ	57	9	48
DOMINION LIFE CHRISTIAN ACADEMY	9390 N FLORIDA AVE	TAMPA	121	110	18
DREAM CHASERS ACADEMY PRESCHOOL AND CHILDCARE	14324 N BOULEVARD	TAMPA	72	69	8
DRUMMER, MAGGIE L.	8323 BAHÍ AVE	TAMPA	6	6	0
EARLY CHILD DEVELOPMENT CENTER OF TAMPA LLC	8405 N 40TH ST	TAMPA	136	136	10

Data is from the EFS Modernization Database as of August 17, 2023.

PROVIDER NAME	ADDRESS	CITY	CHILDREN SERVED		
			UNDUPLICATED TOTAL	SCHOOL READINESS	VPK
EARLY SCHOLARS LEARNING ACADEMY	9321 N ARMENIA AVE	TAMPA	45	26	19
EARLY STEPS MONTESSORI ACADEMY	10701 ANDERSON RD	TAMPA	19	0	19
EARTH ANGEL'S LEARNING ACADEMY	9714 N BOULEVARD	TAMPA	136	124	17
EAST TAMPA ACADEMY EARLY LEARNING PROGRAM	4309 N 34TH ST	TAMPA	48	40	14
EASTER SEALS CHILD DEVELOPMENT CENTER	2401 E HENRY AVE	TAMPA	38	38	0
EBERHART, ANNETTE C DBA KIDD'S R US FCC	1907 E BOUGAINVILLEA AVE	TAMPA	20	20	0
ECHO LEARNING CENTER BILINGUAL	6535 E HILLSBOROUGH AVE	TAMPA	44	37	12
EDUCATED MINDS ACADEMY INC.	10025 W HILLSBOROUGH AVE	TAMPA	96	65	34
ELLIE'S SMALL WORLD LLC	3115 W LAMBRIGHT ST	TAMPA	42	37	11
ELSA KIDS DAYCARE CENTER LLC	6315 W CHELSEA ST	TAMPA	41	30	14
ENGLISH, ZANDRA E.	7910 ALLAMANDA AVE	TAMPA	5	5	0
ENRIQUEZ GARCIA, YUDITH	8220 DONALDSON DR	TAMPA	5	5	0
ENRIQUEZ-MEDEROS, EVELYN	8219 TANGLEWOOD LANE	TAMPA	2	2	0
ERVIN-ROBINSON, RAMONA	1736 WINDSOR WAY	TAMPA	10	10	0
ESPAILLAT, GUADALUPE G. DBA MORNINGSTAR JOY CC	7805 GARRISON ST	TAMPA	7	7	0
ESPINOSA BETANCOURT, GLADYS DBA GLADYS HOME DAYCARE	7608 W LOUISIANA AVE	TAMPA	2	2	0
ESPINOSA NASCO, YURELKYS DBA YURELKYS FAMILY CHILD CARE LLC	12701 TROWBRIDGE LN	TAMPA	2	2	0
ESSENTIAL LEARNING ACADEMY INC.	1000 N MACDILL AVE	TAMPA	40	40	0
EVERETT, LASHAN D.	3420 SAND DUNE LN	TAMPA	11	11	0
FAITH CHRISTIAN ACADEMY PRESCHOOL	1202 S COLLINS ST	PLANT CITY	32	28	7
FAITH OUTREACH ACADEMY	7607 SHELDON RD	TAMPA	18	14	6
FAJARDO, TAIMY E DBA HAPPY PLACE CC, LLC	7507 PARADISE PL	TAMPA	11	11	0
FAMILY LEARNING CENTER	4422 COLUMBUS DR.	TAMPA	6	6	0
FAMILY LOVING DAYCARE INC	9912 N MYRTLE ST	TAMPA	59	59	0
FAMILY OF CHRIST LUTHERAN CHILD DEV CTR	16190 BRUCE B DOWNS BLVD	TAMPA	62	0	62
FAT ALBERT'S DAY CARE	4201 E HANNA AVE	TAMPA	39	39	0
FERNANDEZ VAZQUEZ, CRISTINA DBA CRISTI'S LITTLE OWLS LLC	8408 WOODDRIFT DR	TAMPA	3	3	0
FERNANDEZ, ALICIA	6716 W CLIFTON ST	TAMPA	1	1	0
FERNANDEZ-VERNERO, YUMILA	2308 W ORIENT ST	TAMPA	5	5	0
FERRER, LAIMA	2519 W DIANA ST	TAMPA	2	2	0
FIGUEREDO, MISLEISY	4912 N ARRAWANA AVE	TAMPA	3	3	0
FIGUEREDO-SOTTO, ANIS LEIDIS	10927 TAILFEATHER CT	TAMPA	2	2	0
FINLEY, JOYCE ANNE	4116 W GRACE ST	TAMPA	2	2	0
FIRST BAPTIST BRANDON CHRISTIAN ACADEMY	216 N PARSONS AVE	BRANDON	33	0	33
FIRST BAPTIST CHURCH TEMPLE TERRACE WEE WORLD	10002 N 56TH ST	TEMPLE TERR	50	0	50
FIRST BAPTIST LEARNING CENTER	3309 JAMES L. REDMAN PKWY	PLANT CITY	56	0	56

Data is from the EFS Modernization Database as of August 17, 2023.

PROVIDER NAME	ADDRESS	CITY	CHILDREN SERVED		
			UNDUPLICATED TOTAL	SCHOOL READINESS	VPK
FIRST BAPTIST RUSKIN CHRISTIAN SCHOOL	820 W COLLEGE AVE	RUSKIN	40	0	40
FIRST DISCOVERIES ACADEMY	1311 BROOKER RD	BRANDON	33	20	17
FIRST PRESB PRESCHOOL OF BRANDON INC	121 CARVER AVE	BRANDON	24	0	24
FISH HAWK EARLY LEARNING CENTER	5632 OSPREY PARK PL	LITHIA	51	0	51
FISHER, AGNES V.	5454 SMITH RYALS RD	PLANT CITY	3	3	0
FISHHAWK EARLY LEARNING PRESCHOOL	6001 PARKSET DR	LITHIA	92	0	92
FLORES NUNEZ, CLARITZA	8103 RIDEIN RD	TAMPA	4	4	0
FLYNN, LINDA DBA KIDDIE KOLLEGE 4 U, LLC	2236 E 113TH AVE	TAMPA	11	11	0
FOREST HILLS PRESBYTERIAN LEARNING CTR	709 W LINEBAUGH AVE	TAMPA	54	35	23
FOSTER, THUMBELINA	2712 E 24TH AVE	TAMPA	10	10	0
FOUNDATION CHRISTIAN ACADEMY	3955 LITHIA PINECREST RD	VALRICO	19	0	19
FRANQUI, MARIA C. DBA NANA'S DAYCARE	6414 N GRADY AVE	TAMPA	5	5	0
FREDDIE JEAN LEARNING ACADEMY #3	4215 ORIENT RD	TAMPA	139	137	14
FUTURE LEADERS ACHIEVEMENT LLC II	10030 N 30TH STREET	TAMPA	96	96	0
FUTURE LEADERS ACHIEVEMENT LLC III	6910 KARIN CT	TAMPA	67	67	0
GALILEO MONTESSORI ACADEMY	6620 GUNN HWY	TAMPA	21	10	13
GARCIA GARCÍA, MERKIS DBA BRIGHT FUTURES OF MERKIS	704 BELT CT, TAMPA FL, 33612	TAMPA	1	1	0
GARCIA, MORAIMA	6204 N HUBERT AVE	TAMPA	2	2	0
GARCIA, RAQUEL DBA LOS ZAPATICOS DE ROSA LLC	3108 W LEROY ST	TAMPA	4	4	0
GARCIA-RIVERO, ANAIRSY DBA ANAIRSY THE LITTLE ANGELS, LLC	5459 PENTAIL CIRCLE	TAMPA	10	10	0
GOD'S GARDEN PRESCHOOL	3223 GALLAGHER RD	DOVER	37	0	37
GOLDEN RULE CHILD CARE CENTER RULE LANE	104 GOLDEN RULE LN	PLANT CITY	134	134	0
GOMEZ SUAREZ, MADELAINE DBA EL ARCA DE NOE FCC	14606 KNOLL RIDGE DR	PLANT CITY	1	1	0
GONZALEZ HERNANDEZ, JERIANNE DBA JERIANNE GONZALEZ CHILD CARE HOME LLC	8421 WOODHURST DR	TAMPA	4	4	0
GONZALEZ RODRIGUEZ, YAHIMA	8502 PADDOCK AVENUE	TAMPA	6	6	0
GONZALEZ SANJURJO, MABEL DBA LITTLE LOVELIES	702 PEARL CIR	BRANDON	1	1	0
GONZALEZ, CARMEN	809 PAPAYA DR	TAMPA	9	9	0
GONZALEZ, JANEE Y. DBA MINNIE MOUSE FAMILY HOME CHILDCARE, LLC	7510 CAROLTON CIR	TAMPA	26	26	0
GONZALEZ, MAURA A	7002 N OREGON AVE	TAMPA	1	1	0
GOOD SHEPHERD DAY SCHOOL	501 S DALE MABRY HWY	TAMPA	16	0	16
GOODWIN, JOHN JR.	407 W SADIE ST APT B	BRANDON	6	6	0
GORT APONTE, YENELIS DBA FUTURE STARS DAY CARE	2608 W HENRY AVE	TAMPA	3	3	0

Data is from the EFS Modernization Database as of August 17, 2023.

PROVIDER NAME	ADDRESS	CITY	CHILDREN SERVED		
			UNDUPLICATED TOTAL	SCHOOL READINESS	VPK
GRAHAM, RENEE M.	2009 BALFOUR CIR	TAMPA	18	18	0
GRANT PARK CHRISTIAN ACADEMY	5107 E 32ND AVE	TAMPA	18	7	11
GREAT HOPE PRESCHOOL - LAKE MAGDALENE	1745 W FLETCHER AVE	TAMPA	39	39	0
GREEN HOUSE LEARNING ACADEMY OF TAMPA	4121 W COMANCHE AVE	TAMPA	33	20	15
GREY, KESHA J DBA ALLOMOTHER DAYCARE LLC	8301 STEAMBOAT LN	TAMPA	2	2	0
GUERRA, MICHELLE A	10207 TAKOMAH TRL	TAMPA	6	6	0
GUIO MIRIELA DBA THE MAGIC TREE FAMILY CC LLC	13911 CHERRY BROOK LN	TAMPA	2	2	0
GUZMAN, SHAUNTANE M. DBA LITTLE WONDERS FCC CTR	10923 N LANTANA AVE	TAMPA	6	6	0
HAMMOND, TONIA F DBA MIRACLE ACAD. FCCH	3819 BEECHWOOD BLVD	TAMPA	1	1	0
HARMON PREP SCHOOL	5030 E BUSCH BLVD 400	TAMPA	15	9	6
HCPS ADAMS MIDDLE	10201 N. BOULEVARD	TAMPA	2	2	0
HCPS ALAFIA ELEM	3535 CULBREATH ROAD	VALRICO	48	0	48
HCPS ALEXANDER ELEM	5602 NORTH LOIS AVENUE	TAMPA	31	31	0
HCPS APOLLO BEACH ELEM	501 APOLLO BEACH BLVD.	APOLLO BEACH	15	15	0
HCPS BAILEY ELEM	4630 GALLAGHER RD.	DOVER	48	37	11
HCPS BALLAST POINT ELEM	2802 BALLAST POINT BLVD.	TAMPA	23	12	11
HCPS BARRINGTON MIDDLE	5925 VILLAGE CENTER DR.	LITHIA	1	1	0
HCPS BAY CREST ELEM	4925 WEBB RD	TAMPA	79	17	62
HCPS BELLAMY ELEM	9720 WILSKY BOULEVARD	TAMPA	69	29	40
HCPS BELMONT ELEM	14150 GATE DANCER RD	SUN CITY CTR	10	0	10
HCPS BENITO MIDDLE	10101 CROSS CREEK BLVD.	TAMPA	1	1	0
HCPS BING ELEM	6409 36TH AVENUE SOUTH	TAMPA	27	27	0
HCPS BOYETTE SPRINGS ELEM	10141 SEDGEBROOK DRIVE	RIVERVIEW	37	2	35
HCPS BROOKER ELEM	812 DEWOLF ROAD	BRANDON	10	0	10
HCPS BROWARD ELEM	400 WEST OSBORNE AVENUE	TAMPA	31	21	10
HCPS BRYAN ELEM	2006 WEST OAK AVENUE	PLANT CITY	67	55	12
HCPS BRYANT ELEM	13910 NINE EAGLES ROAD	TAMPA	13	3	10
HCPS BUCHANAN MIDDLE	1001 WEST BEARS AVENUE	TAMPA	3	3	0
HCPS BUCKHORN ELEM	2420 BUCKHORN SCHOOL CT.	VALRICO	27	16	11
HCPS BURNETT MIDDLE	1010 NORTH KINGSWAY ROAD	SEFFNER	2	2	0
HCPS BURNEY ELEM	901 S. EVERS STREET	PLANT CITY	13	13	0
HCPS BURNS MIDDLE	615 BROOKER ROAD	BRANDON	5	5	0
HCPS CANNELLA ELEM	10707 NIXON ROAD	TAMPA	85	32	53
HCPS CARROLLWOOD ELEM	3516 MCFARLAND ROAD	TAMPA	12	0	12
HCPS CHIARAMONTE ELEM	6001 SOUTH HIMES AVENUE	TAMPA	29	18	11
HCPS CHILES ELEM	16541 TAMPA PALMS BLVD. W.	TAMPA	22	22	0
HCPS CIMINO ELEM	4329 CULBREATH ROAD	VALRICO	15	0	15
HCPS CITRUS PARK ELEM	7700 GUNN HWY	TAMPA	10	0	10
HCPS CLARK ELEM	19002 WOOD SAGE DRIVE	TAMPA	28	18	10
HCPS CLAYWELL ELEM	4500 NORTHDAL BLVD	TAMPA	41	20	21
HCPS CLEVELAND ELEM	723 EAST HAMILTON AVENUE	TAMPA	10	10	0

Data is from the EFS Modernization Database as of August 17, 2023.

PROVIDER NAME	ADDRESS	CITY	CHILDREN SERVED		
			UNDUPLICATED TOTAL	SCHOOL READINESS	VPK
HCPS COLLINS ELEM	12424 SUMMERFIELD BLVD.	RIVERVIEW	20	10	10
HCPS COLSON ELEM	1520 LAKEVIEW AVENUE	SEFFNER	44	34	10
HCPS CORK ELEM	3501 N. CORK ROAD	PLANT CITY	35	12	23
HCPS CORR ELEM	13020 KINGS LAKE DRIVE	GIBSONTON	51	28	23
HCPS CRESTWOOD ELEM	7824 NORTH MANHATTAN AVE.	TAMPA	50	32	18
HCPS CYPRESS CREEK ELEM	4040 19TH AVENUE NE	RUSKIN	56	46	10
HCPS DAVIDSEN MIDDLE	10501 MONTAGUE STREET	TAMPA	8	8	0
HCPS DAVIS ELEM	10907 MEMORIAL HIGHWAY	TAMPA	32	14	18
HCPS DEER PARK ELEM	11605 CITRUS PARK DRIVE	TAMPA	28	17	11
HCPS DICKENSON ELEM	4720 KELLY ROAD	TAMPA	9	9	0
HCPS DOBY ELEM	6720 COVINGTON GARDEN DR.	APOLLO BEACH	16	7	9
HCPS DOROTHY C. YORK PREK-8 MAGNET SCHOOL	5995 COVINGTON GARDEN DRIVE	APOLLO BEACH	28	7	21
HCPS DOVER ELEM	3035 NELSON AVENUE	DOVER	97	29	68
HCPS DR CARTER G WOODSON K-8 SCHOOL	8715 N 22ND ST	TAMPA	31	20	11
HCPS DUNBAR ELEM	1730 UNION STREET	TAMPA	31	31	0
HCPS EDISON ELEM	1607 EAST CURTIS STREET	TAMPA	72	40	32
HCPS EGYPT LAKE ELEM	6707 NORTH GLEN AVENUE	TAMPA	10	10	0
HCPS EISENHOWER MIDDLE	7620 OLD BIG BEND ROAD	GIBSONTON	5	5	0
HCPS ESSRIG ELEM	13131 LYNN ROAD	TAMPA	20	0	20
HCPS FERRELL MIDDLE	4302 24TH STREET	TAMPA	3	3	0
HCPS FOLSOM ELEM	9855 HARNEY ROAD	THONOTOSASSA	42	32	10
HCPS FOREST HILLS ELEM	10112 N OLA AVE	TAMPA	47	36	11
HCPS FOSTER ELEM	2014 EAST DIANA STREET	TAMPA	10	0	10
HCPS FRANKLIN MIDDLE	3915 21ST. AVENUE	TAMPA	7	7	0
HCPS FROST ELEM	3950 FAULKENBURG ROAD	RIVERVIEW	9	0	9
HCPS GIBSONTON ELEM	7723 GIBSONTON DRIVE	GIBSONTON	25	14	11
HCPS GIUNTA MIDDLE	4202 SOUTH FALKENBURG RD.	RIVERVIEW	2	2	0
HCPS GORRIE ELEM	706 W DE LEON ST	TAMPA	71	0	71
HCPS GRADY ELEM	3910 W. MORRISON AVENUE	TAMPA	10	0	10
HCPS GRAHAM ELEM	2915 MASSACHUSETTS AVENUE	TAMPA	23	23	0
HCPS HAMMOND ELEM	8008 NORTH MOBLEY ROAD	ODESSA	17	9	8
HCPS HERITAGE ELEM	18201 EAST MEADOWS ROAD	TAMPA	10	0	10
HCPS HILL MIDDLE	5200 EHRlich ROAD	TAMPA	6	6	0
HCPS HUNTER'S GREEN ELEM	9202 HIGHLAND OAK DRIVE	TAMPA	43	23	20
HCPS IPPOLITO ELEM	6874 S FALKENBURG RD	RIVERVIEW	11	0	11
HCPS JACKSON ELEM	502 EAST GILCHRIST ST.	PLANT CITY	28	17	11
HCPS JAMES ELEM	4302 EAST ELLICOTT STREET	TAMPA	16	16	0
HCPS JUST ELEM	1315 SPRUCE STREET	TAMPA	20	20	0
HCPS KENLY ELEM	2909 66TH STREET	TAMPA	39	31	8
HCPS KIMBELL ELEM	8406 NORTH 46TH STREET	TAMPA	61	39	22
HCPS KINGSWOOD ELEM	3102 SOUTH KINGS AVENUE	BRANDON	10	0	10
HCPS KNIGHTS ELEM	4815 NORTH KEENE ROAD	PLANT CITY	17	6	11
HCPS LAKE MAGDALENE ELEM	2002 PINE LAKE DRIVE	TAMPA	21	0	21
HCPS LAMB ELEM	6274 S 78TH STREET	TAMPA	20	3	17

Data is from the EFS Modernization Database as of August 17, 2023.

PROVIDER NAME	ADDRESS	CITY	CHILDREN SERVED		
			UNDUPLICATED TOTAL	SCHOOL READINESS	VPK
HCPS LANIER ELEM	4704 MONTGOMERY AVENUE	TAMPA	45	13	32
HCPS LEWIS ELEM	6700 EAST WHITEWAY DRIVE	TEMPLE TERRACE	27	16	11
HCPS LIBERTY MIDDLE	17400 COMMERCE PARK BLVD.	TAMPA	1	1	0
HCPS LINCOLN ELEM	1207 EAST RENFRO STREET	PLANT CITY	6	6	0
HCPS LOCKHART ELEM.	3719 NORTH 17TH STREET	TAMPA	32	32	0
HCPS LOMAX ELEM	4207 26TH STREET	TAMPA	41	26	15
HCPS LOPEZ ELEM	200 NORTH KINGSWAY ROAD	SEFFNER	35	14	21
HCPS LOWRY ELEM	11505 COUNTRY HOLLOW DRIVE	TAMPA	36	16	20
HCPS LUTZ ELEM	202 5TH AVENUE SE	LUTZ	19	9	10
HCPS MABRY ELEM	4201 ESTRELLA STREET	TAMPA	41	0	41
HCPS MACFARLANE ELEM	1721 NORTH MACDILL AVENUE	TAMPA	8	8	0
HCPS MADISON MIDDLE	4444 W BAY VISTA AVE	SEFFNER	2	2	0
HCPS MANISCALCO ELEM	939 DEBUEL ROAD	LUTZ	22	12	10
HCPS MANN MIDDLE	409 EAST JERSEY AVE	BRANDON	4	4	0
HCPS MARTINEZ MIDDLE	5601 LUTZ LAKE FERN ROAD	LUTZ	2	2	0
HCPS MCDONALD ELEM	501 W. PRUETT ROAD	SEFFNER	22	12	10
HCPS MCKITRICK ELEM	5503 LUTZ LAKE FERN ROAD	LUTZ	5	5	0
HCPS MENDENHALL ELEM	5202 MENDENHALL DRIVE	TAMPA	32	20	12
HCPS MILES ELEM	317 E. 124TH AVENUE	TAMPA	46	16	30
HCPS MINTZ ELEM	1510 HEATHER LAKES BLVD	BRANDON	21	0	21
HCPS MONROE MIDDLE	4716 MONTGOMERY AVENUE	TAMPA	1	1	0
HCPS MORGAN WOODS ELEM	7001 ARMAND DRIVE	TAMPA	20	0	20
HCPS MORT ELEM	1806 BEARSS AVENUE	TAMPA	35	13	22
HCPS MULLER ELEM	13615 NORTH 22ND STREET	TAMPA	22	22	0
HCPS MULRENNAN MIDDLE	4215 DURANT ROAD	VALRICO	3	3	0
HCPS NELSON ELEM	5413 DURANT ROAD	DOVER	21	0	21
HCPS NORTHWEST ELEM	16438 HUTCHINSON ROAD	TAMPA	21	1	21
HCPS OAK GROVE ELEM	6315 N ARMENIA AVE	TAMPA	92	28	64
HCPS OAK PARK ELEM	2716 NORTH 46TH STREET	TAMPA	14	14	0
HCPS ORANGE GROVE MIDDLE	3415 16TH STREET	TAMPA	9	9	0
HCPS PALM RIVER ELEM	805 MAYDELL DRIVE	TAMPA	29	19	10
HCPS PINECREST ELEM	7950 LITHIA PINECREST RD	LITHIA	10	0	10
HCPS PIZZO ELEM	11701 USF BULL RUN DRIVE	TAMPA	8	0	8
HCPS PLANT CITY HIGH LITTLE SCHOOL	ONE RAIDER PLACE	PLANT CITY	6	0	6
HCPS POTTER ELEM	3224 EAST CAYUGA	TAMPA	78	78	0
HCPS PRIDE ELEM	10310 LION'S DEN DRIVE	TAMPA	42	31	11
HCPS PROGRESS VILLAGE MIDDLE MAGNET SCHOOL	8113 ZINNIA DRIVE	TAMPA	5	5	0
HCPS RAMPELLO DOWNTOWN K-8TH	802 EAST WASHINGTON STREET	TAMPA	33	33	0
HCPS RANDALL MIDDLE	16510 FISHHAWK BOULEVARD	LITHIA	2	2	0
HCPS REDDICK ELEM	325 WEST LAKE DRIVE	WIMAUMA	35	24	11
HCPS RIVERHILLS ELEMENTARY MAGNET SCHOOL	405 RIVERHILLS DRIVE	TEMPLE TERRACE	21	0	21
HCPS RIVERVIEW ELEM	10809 HANNAWAY ROAD	RIVERVIEW	44	24	20
HCPS ROBINSON ELEM	4801 SOUTH TURKEY CREEK RD.	PLANT CITY	29	7	22

Data is from the EFS Modernization Database as of August 17, 2023.

PROVIDER NAME	ADDRESS	CITY	CHILDREN SERVED		
			UNDUPLICATED TOTAL	SCHOOL READINESS	VPK
HCPS ROBLES ELEM	4405 EAST SLIGH AVENUE	TAMPA	22	22	0
HCPS RODGERS MIDDLE	11910 TUCKER ROAD	RIVERVIEW	2	2	0
HCPS ROLAND PARK ELEM	1510 NORTH MANHATTAN AVE.	TAMPA	16	16	0
HCPS ROOSEVELT ELEM	3205 FERDINAND AVE SOUTH	TAMPA	10	0	10
HCPS RUSKIN ELEM	101 EAST COLLEGE AVENUE	RUSKIN	102	39	63
HCPS SCHMIDT ELEM	1250 WILLIAMS ROAD	BRANDON	95	60	35
HCPS SCHWARZKOPF ELEM	18333 CALUSA TRACE BLVD	LUTZ	36	14	22
HCPS SEFFNER ELEM	109 CACTUS RD	SEFFNER	19	0	19
HCPS SEMINOLE ELEM	6201 CENTRAL AVENUE	TAMPA	27	17	10
HCPS SERGEANT PAUL R SMITH MIDDLE SCHOOL	14303 CITRUS POINTE DRIVE	TAMPA	3	3	0
HCPS SESSUMS ELEM	11525 RAMBLE CREEK DRIVE	RIVERVIEW	9	0	9
HCPS SHAW ELEM	11311 NORTH 15TH STREET	TAMPA	29	19	10
HCPS SHEEHY ELEM	6402 NORTH 40TH STREET	TAMPA	47	47	0
HCPS SHORE ELEM	1908 EAST 2ND AVENUE	TAMPA	58	24	34
HCPS SPRINGHEAD ELEM	3208 NESMITH ROAD	PLANT CITY	33	33	0
HCPS STEWART MIDDLE	1125 SPRUCE STREET	TAMPA	16	16	0
HCPS STOWERS ELEM	13915 BARRINGTON STOWERS DR.	LITHIA	11	0	11
HCPS SUMMERFIELD CROSSINGS ELEM	11050 FAIRWAY MEADOW DRIVE	RIVERVIEW	10	0	10
HCPS SUMMERFIELD ELEM	11990 BIG BEND ROAD	RIVERVIEW	12	0	12
HCPS SUMNER HIGH SCHOOL	10650 COUNTY ROAD 672	RIVERVIEW	2	2	0
HCPS SYMMES ELEM	6280 WATSON ROAD	RIVERVIEW	10	0	10
HCPS TAMPA BAY BLVD ELEM	3111 TAMPA BAY BLVD	TAMPA	31	19	12
HCPS TAMPA HEIGHTS ELEM	305 E COLUMBUS DR	TAMPA	24	24	0
HCPS TAMPA PALMS ELEM	6100 TAMPA PALMS BLVD.	TAMPA	9	0	9
HCPS TEMPLE TERRACE ELEM	124 FLOTTO AVENUE	TEMPLE TERR	64	47	17
HCPS THOMPSON ELEM	2020 E. SHELL POINT RD.	RUSKIN	28	18	10
HCPS THONOTOSASSA ELEM	10050 SKEW LEE ROAD	THONOTOSASSA	53	29	24
HCPS TINKER ELEM	8207 TINKER STREET	MACDILL AFB	21	0	21
HCPS TOMLIN MIDDLE	501 NORTH WOODROW WILSON ST.	PLANT CITY	4	4	0
HCPS TOWN AND COUNTRY ELEM	6025 HANLEY RD	TAMPA	16	0	16
HCPS TRAPNELL ELEM	1605 WEST TRAPNELL S	PLANT CITY	11	11	0
HCPS TURKEY CREEK MIDDLE	5005 SOUTH TURKEY CREEK RD.	PLANT CITY	2	2	0
HCPS TURNER-BARTELS K-8	9190 IMPERIAL OAK BOULEVARD	TAMPA	61	26	35
HCPS TWIN LAKES ELEM	8507 N HABANA AVENUE	TAMPA	19	0	19
HCPS VALRICO ELEM	609 SOUTH MILLER ROAD	VALRICO	10	0	10
HCPS WALDEN LAKE ELEM	2800 TURKEY CREEK ROAD	PLANT CITY	49	35	14
HCPS WARREN HOPE DAWSON ELEM	12961 BOGGY CREEK DRIVE	RIVERVIEW	22	0	22
HCPS WASHINGTON ELEM	1407 E. ESTELLE STREET	TAMPA	34	34	0
HCPS WEST SHORE ELEM	7110 SOUTH WEST SHORE BLVD	TAMPA	47	18	29
HCPS WEST TAMPA ELEM	2700 WEST CHERRY STREET	TAMPA	62	28	34
HCPS WESTCHASE ELEM	9517 WEST LINEBAUGH AVENUE	TAMPA	6	6	0
HCPS WILLIAMS MIDDLE	5020 NORTH 47TH STREET	TAMPA	18	18	0
HCPS WILSON ELEM	702 ENGLISH STREET	PLANT CITY	6	6	0

Data is from the EFS Modernization Database as of August 17, 2023.

PROVIDER NAME	ADDRESS	CITY	CHILDREN SERVED		
			UNDUPLICATED TOTAL	SCHOOL READINESS	VPK
HCPS WILSON MIDDLE	1005 SWANN AVENUE	TAMPA	4	4	0
HCPS WIMAUMA ELEM	5709 HICKMAN	WIMAUMA	45	24	9
HCPS WITTER ELEM	10801 NORTH 22ND STREET	TAMPA	39	29	10
HCPS WOODBRIDGE ELEM	8301 WOODBRIDGE BLVD	TAMPA	28	6	22
HCPS YATES ELEM	301 KINGSWAY ROAD	BRANDON	52	30	22
HCPS YOUNG MIDDLE	1807 E. MARTIN LUTHER KING BLVD	TAMPA	4	4	0
HEAVEN SENT DAYCARE OF BRANDON, INC.	3003 S KINGS AVE	BRANDON	47	36	16
HEBREW ACADEMY	14908 PENNINGTON RD	TAMPA	16	11	7
HECK, VALDINE T. DBA LITTLE HEARTS HAPPY FEET CC	14009 N 20TH ST	TAMPA	17	14	4
HELPING HAND DAY NURSERY INC. II	6406 N 43RD STREET	TAMPA	66	61	11
HELPING HAND DAY NURSERY IV	12535 TINSLEY CIR	TAMPA	28	25	8
HENDERSON, EUGENIA JONES	4814 S. 87TH STREET	TAMPA	35	35	0
HERE WE GROW LEARNING CENTER	1211 WISHING WELL WAY	TAMPA	125	121	12
HERNANDEZ NUNEZ, AYMARA J. DBA AYMARA'S LITTLE ANGELS HOME DAYCARE LLC	8825 OAK CIR	TAMPA	2	2	0
HIGH 5 INC AT BEVIS	5720 OSPREY RIDGE DR	LITHIA	6	6	0
HIGH 5 INC AT BROOKER	812 DEWOLF RD.	BRANDON	18	18	0
HIGH 5 INC AT CIMINO	4329 CULBREATH RD.	VALRICO	13	13	0
HIGH 5 INC AT FISHHAWK CREEK	16815 DORMAN RD	LITHIA	3	3	0
HIGH 5 INC AT KINGSWOOD	3102 S KINGS AVE	BRANDON	13	13	0
HIGH 5 INC AT LITHIA SPRINGS	4332 LYNX PAW TRL	VALRICO	10	10	0
HIGH 5 INC AT MINTZ	1510 HEATHER LAKES BLVD.	BRANDON	36	36	0
HIGH 5 INC.	405 BEVERLY BLVD	BRANDON	40	40	0
HIGH 5 INC. AT SYMMES	6280 WATSON RD	RIVERVIEW	31	31	0
HIGHER CALLING LEARNING ACADEMY INC.	808 E OKALOOSA AVE	TAMPA	78	71	11
HILLEL SCHOOL OF TAMPA, INC. DBA HILLEL ACADEMY	2020 W FLETCHER AVE	TAMPA	14	0	14
HILLSBOROUGH BAPTIST SCHOOL	6021 WILLIAMS RD	SEFFNER	62	45	18
HILLSBOROUGH COMMUNITY COLLEGE YBOR CHILD DEV. CTR	1505 E PALM AVE	TAMPA	21	13	10
HILLSDALE PRESCHOOL & ACADEMY	6201 EHRLICH RD	TAMPA	31	0	31
HOLMES, MARIAN	3601 E MOHAWK AVE	TAMPA	30	30	0
HOLY TRINITY LUTHERAN SCHOOL	3712 W EL PRADO BLVD	TAMPA	55	0	55
HOME AWAY FROM HOME LEARNING CENTER 1	3002 S 78TH ST	TAMPA	44	44	0
HUNDLEY, KENDRA T	6420 GONDOLA DR	RIVERVIEW	5	5	0
IMMANUEL LUTHERAN PRESCHOOL	2913 JOHN MOORE RD	BRANDON	20	0	20
INCARNATION CATHOLIC SCHOOL	5111 WEBB RD	TAMPA	21	0	21
INDA, DAYAMI DBA DAYAMI HAPPY GROW LLC	8420 WOODLAKE DR	TAMPA	13	13	0
ISTABA PEACE ACADEMY	7326 E SLIGH AVE	TAMPA	73	21	55
JACKSON, HARRIETTE D	1623 CARNEGIE CIRCLE	TAMPA	4	4	0
JACKSON, MARIE	1101 S 58TH ST	TAMPA	6	6	0
JACKSON, REBECCA E.	732 S 58TH ST	TAMPA	13	13	0

Data is from the EFS Modernization Database as of August 17, 2023.

PROVIDER NAME	ADDRESS	CITY	CHILDREN SERVED		
			UNDUPLICATED TOTAL	SCHOOL READINESS	VPK
JIMENEZ ESPONDA,DAISY DBA THE DREAMS FACTORY	6203 N COOLIDGE AVENUE	TAMPA	9	9	0
JIMENEZ HURTADO, YANEISI	7013 TWELVE OAKS BLVD	TAMPA	1	1	0
JIMENEZ HURTADO, YANEISI DBA VERODAVID HOME CHILDCARE CORP	6805 GRAPEVINE CT	TAMPA	3	3	0
JIMENEZ JIMENEZ, MARIA ANTONIA DBA LITTLE ANGELS	2817 W MARQUETTE AVE	TAMPA	3	3	0
JIMENEZ PARYLAK, KLAUDIA DBA KINGS TOTALLY KIDS	9601 KINGSBURGH CT	TAMPA	8	8	0
JIMENEZ-SOTO, EMILY	3812 N 57TH ST	TAMPA	1	1	0
JOLON, ALISON E	1604 E MULBERRY DR	TAMPA	4	4	0
JONES, JUNE L	3221 N. 47TH STREET	TAMPA	10	10	0
JONES, LATOYA	10220 GEESE TRAIL CIR	SUN CITY CTR	18	18	0
JOYAS DEL FUTURO ACADEMY	7501 N HIMES AVE	TAMPA	79	71	17
JUNCO-CRUZ, BENITA C	8204 PENNYWELL PL	TAMPA	4	4	0
JUST FOR TOTS ACADEMY	4417 N LOIS AVE	TAMPA	86	58	34
KENDRICK, MARY G. DBA FRESH BEGINNINGS AND BEYOND	1909 N 35TH ST	TAMPA	6	6	0
KEYSTONE CHILDREN'S ACADEMY	8643 GUNN HWY	ODESSA	38	16	26
KEYSTONE CHRISTIAN PRESCHOOL	16301 RACE TRACK RD	ODESSA	36	0	36
KID CITY USA PLANT CITY	105 THRASHER RD	PLANT CITY	42	34	11
KID CITY USA RIVERVIEW	11329 BIG BEND RD	RIVERVIEW	154	126	41
KIDDIE ACADEMY OF BLOOMINGDALE	1283 BLOOMINGDALE AVE	VALRICO	115	61	60
KIDDIE ACADEMY OF CARROLLWOOD	15320 CASEY RD	TAMPA	96	67	33
KIDDIE ACADEMY OF WESTCHASE	12101 W HILLSBOROUGH AVE	TAMPA	60	0	60
KIDDIE CAMPUS UNIVERSITY	111 MYRTLE RIDGE RD	LUTZ	155	131	30
KIDDIE CAMPUS UNIVERSITY	111 MYRTLE RIDGE RD	LUTZ	86	86	0
KIDDIE COUNTRY	5301 MEMORIAL HWY	TAMPA	14	0	14
KIDDIE KOLLEGE DAY CARE	4319 W FAIR OAKS AVE	TAMPA	23	0	23
KIDLIFE PRESCHOOL	1511 S US HIGHWAY 301	TAMPA	117	103	20
KIDS CLUB EARLY LEARNING CENTER LLC	608 N ALEXANDER ST	PLANT CITY	71	67	10
KID'S COMMUNITY COLLEGE	10550 JOHANNA AVE	RIVERVIEW	75	64	25
KID'S COMMUNITY COLLEGE RIVERVIEW SOUTH PRESCHOOL	10030 MATHOG RD	RIVERVIEW	88	37	57
KID'S COMMUNITY COLLEGE SOUTHEAST	11519 MCMULLEN RD	RIVERVIEW	43	0	43
KIDS CORNER ACADEMY	3401 W COLUMBUS DR	TAMPA	64	48	18
KIDS COVE LEARNING ACADEMY	12010 BALM RIVERVIEW RD	RIVERVIEW	169	117	64
KIDS R KIDS #6 FL	9802 WESTCHASE DR	TAMPA	55	0	55
KIDS R KIDS SOUTHSORE	13151 KINGS LAKE DR	GIBSONTOWN	102	0	102
KIDS R KIDS WATERSET	6406 COVINGTON GARDEN DR	APOLLO BEACH	108	0	108
KIDS R TOPS	215 KINGSWAY RD	BRANDON	146	125	36
KIDS WORLD 9 LLC	121 W PROSSER DRIVE	PLANT CITY	35	29	7
KIDS ZONE LEARNING CENTER	6432 W LINEBAUGH AVE	TAMPA	65	55	14
KIDZ CARE ACADEMY	4936 NORTHDAL BLVD	TAMPA	12	13	10

Data is from the EFS Modernization Database as of August 17, 2023.

PROVIDER NAME	ADDRESS	CITY	CHILDREN SERVED		
			UNDUPLICATED TOTAL	SCHOOL READINESS	VPK
KIDZ CLUB ACADEMY LLC	1202 E SHELLPOINT RD	RUSKIN	38	38	0
KIDZ IN PLAY CHILDCARE CENTER 2	4201 E OSBORNE AVE	TAMPA	94	88	8
KIDZ PLANET	606 E WINDHORST RD	BRANDON	76	76	0
KINDERCARE LEARNING CENTER #1138 PREMIERE	15609 PREMIERE DR	TAMPA	101	93	20
KINDERCARE LEARNING CENTER #1139	4304 BELL SHOALS RD	VALRICO	73	68	8
KINDERCARE LEARNING CENTER #1264	1701 W TIMBERLANE DR	PLANT CITY	93	81	19
KINDERCARE LEARNING CENTER #1290	2524 S PARSONS AVE	SEFFNER	114	99	24
KINDERCARE LEARNING CENTER #30087 GUNN HWY	4250 GUNN HWY	TAMPA	62	53	18
KINDERCARE LEARNING CENTER #342 WEBB	4934 WEBB RD	TAMPA	97	88	17
KINDERCARE LEARNING CENTER 1254	11501 N 53RD ST	TEMPLE TERR	168	157	22
KINGDOM KIDS LEARNING CENTER OF TAMPA, LLC	4922 S 84TH ST	TAMPA	32	31	6
KINGS AVENUE CHRISTIAN PRESCHOOL	2602 S KINGS AVE	BRANDON	28	28	0
KING'S KIDS CHRISTIAN ACADEMY OF TPA INC	3000 N 34TH ST	TAMPA	62	56	10
KINGZ KIDZ CHRISTIAN PRESCHOOL	2908 BELL SHOALS RD	BRANDON	9	9	0
KOUASSI, BETTY NICOLAS	808 E OSBORNE AVE	TAMPA	3	3	0
KRESTVIEW KID'S ACADEMY LLC	11425 BALM RIVERVIEW RD	RIVERVIEW	22	0	22
L,G LEARNING EXPRESS LLC	10302 N NEBRASKA AVE	TAMPA	38	38	0
LA PETITE ACADEMY 7405	10025 CRISTINA DR	RIVERVIEW	206	180	38
LA PETITE ACADEMY 7409	9005 REGENTS PARK DR	TAMPA	123	97	31
LA PETITE ACADEMY BLOOMINGDALE	808 W BLOOMINGDALE AVE	BRANDON	145	128	29
LA PETITE ACADEMY GREENHOLLOW	1011 GREENHOLLOW LN	VALRICO	76	62	19
LA PETITE ACADEMY HUMPHREY	3818 W HUMPHREY ST	TAMPA	113	90	31
LA PETITE ACADEMY MAPLEDALE	15707 MAPLEDALE DR	TAMPA	65	48	22
LA PETITE ACADEMY PAULA	7511 PAULA DR	TAMPA	137	117	31
LA PETITE ACADEMY SOUTH VILLAGE	13502 S VILLAGE DR	TAMPA	55	39	20
LA PETITE ACADEMY WINDHORST	606 E WINDHORST RD	BRANDON	61	49	19
LA ROCA CHRISTIAN ACADEMY	109 APRIL LN	TAMPA	14	14	0
LADYBIRD ACADEMY OF FISHHAWK	16470 HAMMOCK CROSSING DR	LITHIA	33	0	33
LAKA CHILDCARE LLC	4701 N 15TH ST	TAMPA	92	92	0
LAKE MAGDALENE CHRISTIAN SCHOOL	2902 W FLETCHER AVE	TAMPA	69	0	69
LAND OF LEARNING ACADEMY	8809 W ROBSON ST	TAMPA	140	89	60
LARA-RODRIGUEZ, MARIA R. DBA MARIA'S LEARNING SUCESS LLC	7706 W CLIFTON ST	TAMPA	13	3	12
LAUNCHPAD LEARNING CENTER INC.	1405 S. SAINT CLOUD AVE	VALRICO	30	30	0
LAVETI INC. DBA THE GODDARD SCHOOL	14106 SPECTOR RD	LITHIA	42	0	42
LEARN & GROW PRE-SCHOOL CORP.	2501 DURANT RD	VALRICO	10	0	10
LEVY, SHAMBRAY L.	8003 BEATY GROVE DRIVE	TAMPA	2	2	0
LEYVA-MANZANARES, YURINA	8703 SOMERSWORTH PL	TAMPA	2	2	0

Data is from the EFS Modernization Database as of August 17, 2023.

PROVIDER NAME	ADDRESS	CITY	CHILDREN SERVED		
			UNDUPLICATED TOTAL	SCHOOL READINESS	VPK
LIBERTY CHRISTIAN SCHOOL	2505 W GRANFIELD AVE	PLANT CITY	12	0	12
LIC SUSAN F SCANNON CHRISTIAN LEARNING CENTER	9612 N 26TH ST	TAMPA	33	33	0
LIL EXPLORERS CHRISTIAN ACADEMY INC.	301 E ALSOBROOK ST	PLANT CITY	207	207	0
LIL MUNCHKINS LEARNING CENTER INC	702 S EVERS ST	PLANT CITY	140	140	0
LIL PALS	1010 S 76TH ST	TAMPA	67	52	22
LIL TOTS' LEARNING CENTER LLC	3042 S 78TH ST	TAMPA	66	62	10
LIMONA VILLAGE CHAPEL CHILDREN'S CENTER	408 LIMONA RD	BRANDON	40	0	40
LINDA'S DAY CARE CENTER	3402 E 32ND AVE	TAMPA	30	30	0
LINDA'S LITTLE PEOPLE, INC.	1406 N WHEELER ST	PLANT CITY	42	42	0
LITHIA LEARNING CENTER D/B/A KIDS R KIDS FL #8	4321 LYNX PAW TRL	VALRICO	42	0	42
LITTLE ACHIEVERS DAYCARE LLC	18268 N US HIGHWAY 41	LUTZ	9	9	0
LITTLE GIANTS LEARNING ACADEMY NORTH	10891 HACKNEY DR	RIVERVIEW	144	114	43
LITTLE GIANTS LEARNING ACADEMY SOUTH	13250 US 301 S	RIVERVIEW	213	169	55
LITTLE HOUSE KINDER LEARNING CENTER	6333 MEMORIAL HWY	TAMPA	58	50	9
LITTLE LEARNERS ACADEMY OF TAMPA PHASE II	5240 E SLIGH AVE	TAMPA	111	111	0
LITTLE STEPS LEARNING ACADEMY	8325 N PACKWOOD AVE	TAMPA	93	93	0
LITTLE TEAM LEARNING ACADEMY	6929 N MANHATTAN AVE	TAMPA	98	86	20
LITTLE TOTS BUILDING BLOCKS ACADEMY, INC	812 MAYDELL DR	TAMPA	108	108	0
LITTLE WONDERS LEARNING CENTER	7916 N HIMES AVE	TAMPA	32	18	18
LIVINGSTON, CECELIA W	3002 N 46TH ST	TAMPA	4	4	0
LOLA'S CHILD CARE CENTER, INC.	4017 N 34TH ST	TAMPA	70	68	7
LONDONO, PAULA A.	6530 SPANISH MOSS CIR	TAMPA	1	1	0
LOVE & GLORY LEARNING CENTER INC.	4911 N 42ND STREET	TAMPA	80	79	6
LUIS, MIDIALA V. DBA RAYITO DE SOL	5504 CARROLLWOOD MEADOWS DR	TAMPA	11	11	0
LUTZ LEARNING CENTER INC	621 SUNSET LN	LUTZ	34	0	34
LUTZ MONTESSORI SCHOOL	5604 W LUTZ LAKE FERN RD	LUTZ	24	0	24
LUTZ PRE-PREP	17951 N US HIGHWAY 41	LUTZ	88	0	88
MACHADO-CORREA, ELIZABETH	813 PATBUR AVE	TAMPA	5	5	0
MAGIC KINDER PRESCHOOL	16641 FISHHAWK BLVD	LITHIA	66	52	16
MANIFESTATIONS EARLY CHILDCARE CENTER	3102 E LAKE AVE	TAMPA	156	149	17
MANIFESTATIONS EARLY CHILDCARE CENTER EAST	2709 N 34TH ST	TAMPA	11	11	0
MANN, EILEEN P	4203 S COVINA CIR	TAMPA	5	5	0
MARI LEDESMA, MAYELIN DBA SWEETHARTS HOME DAYCARE INC	810 W WHATLEY PL	TAMPA	4	4	0
MARIN SUAREZ, ARASAY	214 TERRACE DR	BRANDON	6	6	0
MARK OF EXCELLENCE ACADEMY, LLC	1905 LENNA AVE	SEFFNER	62	53	11

Data is from the EFS Modernization Database as of August 17, 2023.

PROVIDER NAME	ADDRESS	CITY	CHILDREN SERVED		
			UNDUPLICATED TOTAL	SCHOOL READINESS	VPK
MARTA M. GONZALEZ FAMILY CHILD CARE HOME DBA MARTA'S CHILD CARE, LLC	2522 W CORDELIA ST	TAMPA	2	2	0
MARTINEZ, MABEL	2122 W HANNA AVE	TAMPA	3	3	0
MARTIN-SANTOS, IDARME MARIA DBA CAMPANITAS DE	2801 W ROBSON ST	TAMPA	5	5	0
MARY GO ROUND CHILD CARE CENTER, INC.	10810 HANNAWAY DR	RIVERVIEW	42	16	27
MARY GO ROUND SOUTH POINTE	10615 SOUTHERN POINTE BLVD	RIVERVIEW	63	15	49
MARY'S LITTLE LAMB PRESCHOOL INC	7311 N ARMENIA AVE	TAMPA	19	12	11
MAYEA ARTEAGA, YAIMET DBA YAIMET MAYEA HDC LCC	907 COOLWOOD PL	BRANDON	11	11	0
MAYNARD, QUEEN E. DBA WHERE'S MY BLANKET	6228 TRAVIS BLVD	TAMPA	4	4	0
MCCALISTER, LISHIA C	8711 RUTH PL	TAMPA	6	6	0
MCCOY, TRINA V	1770 LAKEVIEW VILLAGE DR	BRANDON	11	11	0
MCDUFFIE, VANESSA N	1814 FLAT BRANCH CT	VALRICO	12	12	0
MCGHIE, VERONICA E (DBA) MELODY MAKERS KIDZ FCCH	1440 FOXBORO DR	BRANDON	12	12	0
MCLEAN, LAVERN ANN-MARIE DBA GENTLE HANDS ACADEMY	10709 CARLOWAY HILLS DR	WIMAUMA	6	1	5
MCMILLAN, ARNEATRA T.	4009 N 27TH ST	TAMPA	10	10	0
MEDEROS-HERNANDEZ, IDAIVI	4528 W CLIFTON ST	TAMPA	1	1	0
MEDINA GARCIA, GEORGINA ADAIMY DBA MIMI'S DAYCARE	1415 W YUKON ST	TAMPA	7	7	0
MENENDEZ, ODALIS DBA MENENDEZ FAMILY CHILDCARE	7205 BEASLEY RD	TAMPA	3	3	0
MESSIAH LUTHERAN CHURCH PRESCHOOL	14920 HUTCHISON RD	TAMPA	12	0	12
METROPOLITAN MINISTRIES DBA PROMISE LAND	2010 N FLORIDA AVE	TAMPA	229	229	0
METROPOLITAN MINISTRIES -DBA- CREATE-MANGO	4220 COUNTY ROAD 579	SEFFNER	33	33	0
MILESTONE ACADEMY, LLC	8801 N 78TH ST	TEMPLE TERR	173	160	19
MOFFITT CHILD DEVELOPMENT CENTER OPERATED BY BRIGHT HORIZONS	10950 MCKINLEY DR	TAMPA	20	0	20
MOLEIRO, CARIDAD	7702 WINGING WAY DR	TAMPA	3	3	0
MONTESSORI EARLY LEARNING CENTER	3823 HUDSON LN	TAMPA	42	0	42
MONTGOMERY, ARETRINA T. DBA ARETRINA'S FCCH, LLC	5805 34TH AVE S	TAMPA	4	4	0
MORNING GLORY ACADEMY	6001 CHRISTY LN	RIVERVIEW	118	96	31
MORRIS, JUDY J. DBA HAND IN HAND HOME CHILDCARE	4202 GAME DAY CT	TAMPA	24	24	0
MOTHER GOOSE PRESCHOOL	3407 N HABANA AVE	TAMPA	53	53	0
MOUNT CALVARY SEVENTH DAY ADVENTIST SCH	3111 E WILDER AVE	TAMPA	38	38	0
MUNOZ, ADRIANA L.	112 E 145TH AVE	TAMPA	4	4	0
MUNOZ-GUERRA, ADRIANA L.	8913 N BOULEVARD	TAMPA	3	3	0

Data is from the EFS Modernization Database as of August 17, 2023.

PROVIDER NAME	ADDRESS	CITY	CHILDREN SERVED		
			UNDUPLICATED TOTAL	SCHOOL READINESS	VPK
MURDOCK, JAMESENA	1520 E 26TH AVE	TAMPA	6	6	0
MURPHY, GRETCHEN DBA MURPHY'S CHILD DEVELOPMENT CENTER	1508 E MCBERRY ST	TAMPA	5	5	0
MY LITTLE GIANTS DAY SCHOOL	2828 W KIRBY ST	TAMPA	35	26	12
MY LITTLE GIANTS DAY SCHOOL	6503 N HIMES AVE	TAMPA	47	26	22
NELSIE'S DAY CARE LEARNING CENTER LLC	2708 N BOULEVARD	TAMPA	31	31	0
NEW HEAVEN LEARNING CENTER	16246 SAGEBRUSH ROAD	TAMPA	24	17	7
NEW HOPE EARLY LEARNING	120 N KNIGHTS AVE	BRANDON	22	0	22
NEW JERUSALEM CHRISTIAN ACADEMY	3101 S KINGSWAY RD	SEFFNER	5	5	0
NEW JERUSALEM CHRISTIAN ACADEMY VPK	3101 S KINGSWAY RD	SEFFNER	21	0	21
NEWTON, CAROLYN D.	1318 LARSEN LN	TAMPA	15	15	0
NEXT GENERATION KIDZ EARLY CDHD LRNG INC	1207 E JUNEAU ST	TAMPA	26	26	0
NEXT GENERATION KIDZ ECL CENTER 2 INC	3211 SANCHEZ ST	TAMPA	98	93	8
NEXT GENERATION KIDZ ECLC 3 INC	6815 E 21ST AVE	TAMPA	38	38	0
NEXT JEN'ERATION KIDS ACADEMY LLC	410 S COLLINS ST	PLANT CITY	45	45	0
NIKIAH BRYANT FCCH LLC	1125 W ARCH ST	TAMPA	5	5	0
NIXON, ESTERZIE N	4116 E 99TH AVE	TAMPA	2	2	0
NORTH TAMPA CHRISTIAN ACADEMY EXPLORERS, INC	5585 E COUNTY LINE RD	WESLEY CHAPEL	44	7	38
NORTH TAMPA HEIGHTS EARLY LEARNING CENTER	3717 N.CENTRAL AVE	TAMPA	1	1	0
NORTHDALE CHRISTIAN ACADEMY	15709 MAPLEDALE BLVD	TAMPA	10	0	10
NUNEZ LOPEZ, ANGELA M. DBA ANGELA M. NUNEZ	6807 MATILDA CT	TAMPA	6	6	0
NUNEZ, MARIA	6025 MORNAY DR	TAMPA	2	2	0
O2B KIDS RIVERVIEW	11616 BOYETTE RD	RIVERVIEW	108	73	43
O2B KIDS SOUTH TAMPA	3202 W GANDY BLVD	TAMPA	99	62	39
O2B KIDS SOUTH WESTSHORE	4302 W EUCLID AVE	TAMPA	43	22	21
OLIVERA-CARABALLOSO, YENICE DBA YENI CHILD CARE	4529 W CLIFTON ST	TAMPA	1	1	0
ORTEGA SANTIESTEBAN, ROSAURA M.	11311 N BOULEVARD	TAMPA	5	5	0
ORTIZ, BEVERLY D	14403 N 18TH ST	TAMPA	8	8	0
ORTIZ, BEVERLY DEWANDA	14401 N18TH STREET	TAMPA	6	6	0
PALMA CEIA ACADEMY INC	4230 HENDERSON BLVD	TAMPA	45	36	12
PALMA CEIA UNITED METHODIST CHURCH, INC	3723 W BAY TO BAY BLVD	TAMPA	28	0	28
PALMER RODRIGUEZ, ISARELIS L.	10704 WINGATE DR	TAMPA	3	3	0
PANDA HUGS ACADEMY LLC	15051 BRUCE B DOWNS BLVD	TAMPA	178	145	50
PARADISE LEARNING CENTER	5605 N LINCOLN AVE	TAMPA	68	55	18
PARADISE LEARNING CENTER II	1205 W. HILLSBOROUGH AVE.	TAMPA	76	65	14
PARADISE LEARNING CENTER III	820 W DR. MLK BLVD	TAMPA	49	40	11
PARADISE LEARNING CENTER IV	8012 N ARMENIA AVE	TAMPA	51	37	19
PARADISE LEARNING CENTER V	6704 N. HIMES AVENUE	TAMPA	125	101	28

Data is from the EFS Modernization Database as of August 17, 2023.

PROVIDER NAME	ADDRESS	CITY	CHILDREN SERVED		
			UNDUPLICATED TOTAL	SCHOOL READINESS	VPK
PARDUE CC LITHIA LLC DBA THE LEARNING EXPERIENCE	16232 BAYBERRY GLEN DR	LITHIA	89	34	57
PARDUE CC SERVICES LLC DBA THE LEARNING EXPERIENCE	20780 TROUT CREEK DRIVE	TAMPA	88	0	88
PARK A TOT DAY CARE CENTER, INC.	3809 W FIG ST	TAMPA	87	87	0
PEGUERO SANTOS, YINET DBA KIDDIE CITY DAYCARE	5560 PENTAIL CIR	TAMPA	2	2	0
PERDOMO QUESADA, REGLA M. DBA HAPPY PEQUES	8707 WOODVINE CT	TAMPA	13	13	0
PEREZ CAPDEVILLA, YANISLEYDI	1416 W BURGER ST	TAMPA	2	2	0
PEREZ GOMEZ, YANNERIS DBA YANNERIS PEREZ-GOMEZ DAYCARE LLC	4638 LANDSCAPE DR	TAMPA	3	3	0
PEREZ TORRES, YAIMA DBA LITTLE BUILDERS OF THE FUTURE LLC	7018 W POCAHONTAS AVE	TAMPA	3	3	0
PEREZ-LEAL, ANGELA M. DBA ANGELA'S DAY CARE LLC	409 DESIREE DR	BRANDON	10	10	0
PEREZ-VALDES, DAYAMIT M.	8107 BLOSSOM AVE	TAMPA	3	3	0
PEREZ-VALDES, MARIA E	7007 LAMBRIGHT CT	TAMPA	3	3	0
PINECREST MIRNIA'S ACADEMY	6605 N HALE AVE	TAMPA	92	75	20
PINOCCHIO LEARNING CENTER INC.	3303 W SAINT LOUIS ST	TAMPA	36	20	21
PITSTOP 4 KIDS AFTERSCHOOL PROGRAM, INC.	11207 US HIGHWAY 301 S	RIVERVIEW	76	55	23
PLANT CITY LEARNING CENTER INC	651 E ALEXANDER ST	PLANT CITY	147	147	0
PLATO ACADEMY PRESCHOOL TAMPA	7705 GUNN HWY	TAMPA	21	7	14
PLAY 'N' LEARN CHILDREN'S DEVELOPMENT CT	14706 N BOULEVARD	TAMPA	80	65	19
PLAYTIME LEARNING ACADEMY	4701 EHRLICH RD	TAMPA	97	36	68
PLAYWORLD ACADEMY LLC	5002A W LINEBAUGH AVE STE A	TAMPA	49	49	0
PORTER, FRANKIE C DBA FRANKIE'S FCCH INC	1004 YORK CT	BRANDON	12	12	0
POST SUNSHINE RANCH	1350 JOHN MOORE RD	BRANDON	31	3	28
POTRILLE, ADA	7806 FELICE AVE	TAMPA	12	12	0
POUS, ANELEY DBA WORLD OF LEARNING LLC.	6004 W JEAN ST	TAMPA	18	18	0
PRECIOUS GEMS ACADEMY INC.	736 MARTIN LUTHER KING BLVD	SEFFNER	92	83	20
PRECIOUS ONES LEARNING CENTER	5810 N HALE AVE	TAMPA	30	30	0
PRECIOUS PEARLS LEARNING ACADEMY LLC	11412 N CENTRAL AVE	TAMPA	121	121	0
PRIMAVERA PRESCHOOL, INC	12881 BAYOU BRANCH AVE	TAMPA	33	0	33
PRIMROSE SCHOOL OF BLOOMINGDALE	1280 BLOOMINGDALE AVE	VALRICO	41	0	41
PRIMROSE SCHOOL OF CARROLLWOOD	1770 W BEARSS AVE	TAMPA	43	0	43
PRIMROSE SCHOOL OF CROSS CREEK	10301 CROSS CREEK BLVD	TAMPA	62	0	62
PRIMROSE SCHOOL OF CROSS CREEK	10301 CROSS CREEK BLVD	TAMPA	60	0	60
PRIMROSE SCHOOL OF LUTZ 2	5001 W LUTZ LAKE FERN RD	LUTZ	41	0	41
PRIMROSE SCHOOL OF SOUTH TAMPA	1700 W KENNEDY BLVD	TAMPA	83	0	83

Data is from the EFS Modernization Database as of August 17, 2023.

PROVIDER NAME	ADDRESS	CITY	CHILDREN SERVED		
			UNDUPLICATED TOTAL	SCHOOL READINESS	VPK
PRIMROSE SCHOOL OF TAMPA PALMS - 3	5307 PRIMROSE LAKE CIR	TAMPA	65	0	65
PRIMROSE SCHOOL OF WESTCHASE	12051 WHITMARSH LN	TAMPA	68	0	68
PRODIGY EARLY LEARNING AT CREEKSIDE , LLC.	14036 US HIGHWAY 301 S	RIVERVIEW	38	0	38
PROGRESS VILLAGE CHRISTIAN ACADEMY	8616 PROGRESS BLVD	TAMPA	49	28	23
QUINTANA-GARCIA, YANELA	9522 W FLORA ST	TAMPA	6	6	0
QUINTANA-GARCIA, YANELA	6805 GRAPEVINE CT	TAMPA	6	6	0
QUINTERO-GARCELL, ODALYS	9016 W FLORA ST	TAMPA	3	3	0
RAINBOW KIDS CHILD CARE CENTER	4124 W WATERS AVE	TAMPA	63	53	12
RAINBOW OF KIDS ACADEMY	2708 N CENTRAL AVE	TAMPA	72	69	9
RAMOS LEARNING INC.	2118 N MACDILL AVE	TAMPA	27	27	0
RAMOS, CARMEN BLANCO	3409 W OSBORNE AVE	TAMPA	8	8	0
RCCG GSA PRESCHOOL	710 S KINGS AVE	TAMPA	11	11	0
REDDISH, TAMMY D	3010 E 24TH AVE	TAMPA	5	5	0
REINA, MIRIAM DBA KID'S PARADISE	14502 MARKLAND GREENS PL	TAMPA	3	3	0
REYES OSORIO, DALVIS S. DBA ABUELA'S HOUSE CC, LLC	2902 W IDLEWILD AVE	TAMPA	4	4	0
REYES, OLGA M. DBA HAPPY TIMES DAYCARE LLC	3708 ARGON DR	TAMPA	12	12	0
RICARDO-NAPOLES, YANIET A. DBA YANI PLAYLAND	4926 EL DORADO DR	TAMPA	8	8	0
RICHARDSON, DEBRA S. FAMILY CHILD CARE HOME DBA DEBRA S. RICHARDSON, LLC	8405 ASH AVE	TAMPA	5	5	0
RICHARDSON, SHANNON N. DBA A HEAD START FCCH	4106 EAST OKARA ROAD	TAMPA	14	14	0
ROBINSON BROWN, CYNTHIA DBA PALM RIVER EARLY CDFCC	1815 CADILLAC CIR FL 33619	TAMPA	15	15	0
ROBINSON, ARCHEKA C. DBA MY LITTLE GIANT'S CC LLC	3618 E OSBORNE AVE	TAMPA	13	13	0
ROBINSON, KELENE D.	9309 N 28TH ST	TAMPA	14	14	0
RODRIGUEZ REGALADO, OLGA	6819 N CLEARVIEW AVE	TAMPA	10	10	0
RODRIGUEZ, MARILIN DBA KIDS WONDERLAND	6326 FROST DR	TAMPA	4	4	0
RODRIGUEZ, TAHUMARA	8011 N CLARK AVE	TAMPA	4	4	0
RODRIGUEZ-FERNANDEZ, YOSLAINE	8530 N ASHLEY ST	TAMPA	3	3	0
RODRIGUEZ-PADRON, YOSLAYNE C. DBA YOSLAYNE FCCH	2120 W IVY ST	TAMPA	8	8	0
RONDON, TAMARA DBA KIDS FOREVER CHILD CARE	4540 W HENRY AVE	TAMPA	6	6	0
ROSA VALDEZ CENTER AT MORGAN WOODS	7001 ARMAND DR	TAMPA	19	5	19
ROSADO LOPEZ, TANIA	2102 W RIO VISTA AVE	TAMPA	2	2	0
ROSALES, MADELINE	10206 BONNIE BAY COURT	TAMPA	1	1	0
ROSALES-GOODWIN, MICHELLE C	407 W SADIE ST APT A	BRANDON	7	7	0
ROSE ACADEMY OF ACHIEVERS , LLC	4108 E ELLICOTT ST	TAMPA	77	76	6
RUIZ, DIANELIS	6646 COUNTY ROAD 579	SEFFNER	5	5	0

Data is from the EFS Modernization Database as of August 17, 2023.

PROVIDER NAME	ADDRESS	CITY	CHILDREN SERVED		
			UNDUPLICATED TOTAL	SCHOOL READINESS	VPK
RUSKIN U/M CHURCH DAY CARE CENTER	105 4TH AVE NW	RUSKIN	42	28	20
SAFE AND SOUND LEARNING CENTER LLC	8516 RIDEIN RD	TAMPA	31	31	0
SAFETYLAND DAY NURSERY & KINDERGARTEN	13122 N 15TH ST	TAMPA	193	193	0
SALGUEIRO DOMINGUEZ, BARBARA DBA BABY BLISS DAYCARE	5307 SOUTHWICK DR	TAMPA	2	2	0
SANCHEZ AGUIAR, ODALIS DBA ODALIS' HOME DAYCARE INC	9503 BAYTREE CT	TAMPA	3	3	0
SANCHEZ REDONDO, YOLENNY DBA YOLY HOME DAYCARE LLC	12693 N BOULEVARD	TAMPA	5	5	0
SANDRA THOMAS FAMILY ENRICHMENT CENTER INC.	1924 E. COMANCHE AVENUE	TAMPA	63	63	0
SANDY'S LEARNING CENTER	15923 N FLORIDA AVE	LUTZ	56	51	9
SANTIESTEBAN-VIDAL, MARITZA I.	9507 PEMBRIDGE CT	TAMPA	2	2	0
SEBASCO-GONZALEZ, DANAY	9013 HICKORY CIR	TAMPA	1	1	0
SEE SAW JUNCTION DAYCARE AND LEARNING CENTER INC	6812 N DIXON AVE	TAMPA	64	64	0
SEE SAW JUNCTION LEARNING CTR II	8720 NORTH 40TH STREET	TAMPA	38	38	0
SEFFNER EARLY CHILDHOOD DEVELOPMENT CENTER INC	205 E US HIGHWAY 92	SEFFNER	62	62	0
SEKIRIME, SHIRA	4604 SERENA DR	TAMPA	8	8	0
SEMINOLE HEIGHTS UNITED METHODIST PRESCHOOL	509 E HANNA AVE.	TAMPA	39	11	30
SHEPHERD, NICOLE DENISE	311 DOWN PINE DR	SEFFNER	21	21	0
SHINING STARS PRESCHOOL ACADEMY, INC.	603 E MORGAN ST	BRANDON	75	59	26
SIMMONS CHILD WORLD	107 E CLAY AVENUE	BRANDON	198	198	0
SKY HIGH LEARNING ACADEMY LLC	7912 N ARMENIA AVE	TAMPA	37	37	0
SMALL BLESSINGS PRESCHOOL	500 W. PLATT STREET	TAMPA	35	0	35
SMART KIDS ACADEMY LLC	3512 W BAKER ST	PLANT CITY	65	57	11
SMART START PRE-PREP LLC	13801 MCCORMICK DR	TAMPA	83	40	45
SMART STEPS LLC	9653 WILSKY BLVD	TAMPA	54	35	23
SMITH, AISHA L.	1509 EAST DR. MARTIN LUTHER KING JR. BLVD	PLANT CITY	5	5	0
SMITH, MARKITA M DBA KIDS R IN US	1311 WARRINGTON WAY	TAMPA	12	12	0
SMITH, TIFFANY D. DBA ALPHABET BOULEVARD FCCH	2412 E 19TH AVE	TAMPA	17	17	0
SOUTHSHORE MONTESSORI	7006 SAIL VIEW LN	APOLLO BEACH	38	0	38
ST. ANDREWS UNITED METHODIST PRESCHOOL	3315 BRYAN RD	BRANDON	42	0	42
ST. CLEMENT'S ACADEMY	706 W 113TH AVE	TAMPA	12	7	5
ST. JAMES UNITED METHODIST PRESCHOOL	16202 BRUCE B DOWNS BLVD	TAMPA	72	0	72
ST. JOSEPH CATHOLIC SCHOOL	2200 N GOMEZ AVE	TAMPA	30	0	30
ST. JOSEPH'S CHILD CARE CENTER	3001 W DR MARTIN LUTHER KING JR BLVD	TAMPA	29	11	19
ST. PAUL CATHOLIC PRESCHOOL	12708 N DALE MABRY HWY	TAMPA	42	0	42
ST. PETER CLAVER CATHOLIC SCHOOL	1401 N GOVERNOR ST	TAMPA	10	10	0

Data is from the EFS Modernization Database as of August 17, 2023.

PROVIDER NAME	ADDRESS	CITY	CHILDREN SERVED		
			UNDUPLICATED TOTAL	SCHOOL READINESS	VPK
ST. TIMOTHY CATHOLIC EARLY CHILDHOOD LEARNING CTR	17512 LAKESHORE RD	LUTZ	37	0	37
STARFISH SCHOLARS OF VALRICO	4321 LYNX PAW TRL	VALRICO	48	8	40
STEAM PRESCHOOL ACADEMY AT NETPARK TAMPA BAY	5015 N 56 ST	TAMPA	208	187	38
STEAM PRESCHOOL ACADEMY OF PLANT CITY	1108 GOLDFINCH DR	PLANT CITY	88	67	24
STEP AHEAD ACADEMY	308 E 124TH AVE	TAMPA	113	104	14
STEPS TO MATURITY LEARNING CENTER	9508 N NEBRASKA AVE	TAMPA	133	133	0
STORYBOOK RANCH PRESCHOOL INC.	8401 W LINEBAUGH AVE	TAMPA	18	0	18
STRAWBERRY CREST EARLY CHILDHOOD DEV CENTER INC	3802 GALLAGHER RD	PLANT CITY	48	48	0
STREETS, VERONICA E	603 OVERHILL DR	BRANDON	2	2	0
SUAREZ FORNAGUERA, MARGARITA	926 HILLRISE DRIVE	BRANDON	2	2	0
SUNCOAST ACADEMY INFANT AND TODDLER CENTER	4210 HENDERSON BLVD	TAMPA	2	2	0
SUNCOAST ACADEMY PRESCHOOL	4207 W SAN MIGUEL ST	TAMPA	27	5	23
SUNRISE CHILDREN'S SERVICES, INC	1114 W SLIGH AVE	TAMPA	34	32	8
SUNSHINE CHILDREN'S LEARNING CENTER LLC - KELLY	4405 KELLY ROAD	TAMPA	66	56	16
SUNSHINE CHILDREN'S LEARNING CENTER LLC - BAY	3923 W BAY AVE	TAMPA	70	61	13
TAMAYO, IRMA Y	2110 W HERMAN ST	TAMPA	1	1	0
TAMPA BAY ACADEMY INC.	14214 N NEBRASKA AVE	TAMPA	21	2	21
TAMPA BAY ACADEMY SCHOOL AGE	14214 N NEBRASKA AVE	TAMPA	1	1	0
TAMPA BAY CHRISTIAN ACADEMY OF FLORIDA, INC.	6815 N ROME AVE	TAMPA	108	77	38
TAMPA COMMUNITY CENTER	1725 E FOWLER AVE	TAMPA	57	50	9
TAMPA DAYCARE CENTER	7402 N 56TH STREET SUITE 200	TAMPA	152	149	15
TATE GREENE, SHAKEYBA L. DBA CHILDREN'S GARDEN	4106 N 15TH ST APT A	TAMPA	4	4	0
TAYLOR, CAROL DENISE	10424 STRAWBERRY TETRA DR	RIVERVIEW	16	16	0
TAYLOR, DEBORA DBA KIDDY KORNER FAM CC	1612 E OSBORNE AVE	TAMPA	13	13	0
TAYLOR, ELIZABETH D.	921 E LOTUS AVE	TAMPA	19	19	0
TEMPLE TERRACE PRESBYTERIAN WEEKDAY SCHOOL	420 BULLARD PKWY	TEMPLE TERR	119	81	46
THARPE, EDVENA S	2909 E EMMA ST	TAMPA	5	5	0
THE ACADEMY AT TRUE SANCTUARY OF PRAISE	6528 US HIGHWAY 301 S STE 114	RIVERVIEW	46	37	12
THE BRANDON MONTESSORI SCHOOL AT RIVERHILL	4223 LYNX PAW TRL	VALRICO	39	0	39
THE CHILDREN OF DESTINY EARLY LEARNING CENTER	121 W PROSSER DR	PLANT CITY	15	10	6
THE GODDARD SCHOOL	13401 TAMPA OAKS BLVD	TEMPLE TERR	57	31	31
THE GODDARD SCHOOL	12964 BOGGY CREEK DR	RIVERVIEW	61	0	61
THE GODDARD SCHOOL BRICK PLACE	14607 BRICK PL	TAMPA	44	0	44
THE GODDARD SCHOOL OF SOUTH TAMPA	2401 W KENNEDY BLVD	TAMPA	36	15	22

Data is from the EFS Modernization Database as of August 17, 2023.

PROVIDER NAME	ADDRESS	CITY	CHILDREN SERVED		
			UNDUPLICATED TOTAL	SCHOOL READINESS	VPK
THE GROWING TREE ACADEMY, INC.	8718 SOUTH MOBLEY RD	TAMPA	62	42	23
THE LEARNING CENTER AT ST. JOHN	4110 N MACDILL AVE	TAMPA	12	7	6
THE LEARNING CENTER AT LAKE CARROLL	12012 NORTH ROME AVE.	TAMPA	34	13	21
THE LEARNING EXPERIENCE	6302 30TH ST. NE	APOLLO BEACH	19	0	19
THE LEARNING EXPERIENCE	3705 US HIGHWAY 301 S	RIVERVIEW	78	0	78
THE LEARNING EXPERIENCE RIVERCREST	10709 CREST SIDE BLVD	RIVERVIEW	80	0	80
THE LEARNING EXPERIENCE BRANDON	413 E BLOOMINGDALE AVE	BRANDON	126	47	86
THE LEARNING EXPERIENCE RIVERVIEW	3705 S US HIGHWAY 301	RIVERVIEW	83	0	83
THE LEARNING GATE, INC.	16331 HANNA RD	LUTZ	22	0	22
THE LEARNING STATION, LLC	10611 CONE GROVE RD	RIVERVIEW	53	12	42
THE NEST SCHOOL INC.	23461 COLLIER PARKWAY	LUTZ	19	0	19
THE PEACOCK'S PLUME COMPANY	1094 BLOOMINGDALE AVE	VALRICO	103	86	29
THE RIVERVIEW MONTESSORI SCHOOL AT RIVERCREST, LLC	11520 RAMBLE CREEK DR	RIVERVIEW	31	0	31
THE TAMPA JCC/FEDERATION, INC.	13013 COMMUNITY CAMPUS DR	TAMPA	17	0	17
THE TAMPA JCC/FEDERATION, INC. - YSABELLA	2710 SOUTH YSABELLA AVE.	TAMPA	16	0	16
THE VILLAGE EARLY LEARNING CENTER	3741 CANOGA PARK DR	BRANDON	146	0	146
THOMPSON THERESA FAMILY CHILDCARE HOME LLC	5012 E. CLUSTER AVENUE	TAMPA	7	7	0
THOMPSON, NEOMI R. DBA TAMPA BAY'S BRIGHT FUTURE	9216 N 13TH ST	TAMPA	27	27	0
TIME OF WONDER ACADEMY	5130 SUNFOREST DR STE 180	TAMPA	38	25	16
TIMS PRESCHOOL INC.	601 SUNSET LN	LUTZ	58	0	58
TINY FEET LEARNING ACADEMY	7902 W WATERS AVENUE	TAMPA	53	43	13
TOGETHER TIME	15306 CASEY RD	TAMPA	60	52	11
TOP KIDS BILINGUAL PRESCHOOL	6701 S MANHATTAN AVE STE D	TAMPA	93	69	30
TOP KIDS BILINGUAL PRESCHOOL 7 INC.	3805 JOHN MOORE RD	BRANDON	66	40	30
TOP KIDS BILINGUAL PRESCHOOL RIVERVIEW	10530 LAKE ST CHARLES BLVD	RIVERVIEW	128	87	52
TOP KIDS PRESCHOOL 5	202 E BROAD ST	TAMPA	85	76	16
TORRES, ILEANA DBA ILEANA CHILDCARE INC	8334 W FOREST CIR	TAMPA	13	13	0
TPA ELITE SPORTS ACADEMY INC.	8001 SHELTON RD	TAMPA	112	92	27
TWO STEPS AHEAD EARLY LEARNING CENTER, LLC	3905 E REGNAS AVE	TAMPA	41	41	0
UMARAN-SOLARES, MAYLEN M. DBA SEA LIFE DAYCARE LLC	8402 CATALINA DR	TAMPA	1	1	0
UNIVERSAL ACADEMY OF FLORIDA	6801 ORIENT ROAD	TAMPA	28	0	28
USAA CHILD DEVELOPMENT CENTER	17200 COMMERCE PARK BLVD	TAMPA	7	0	7
USF PRESCHOOL FOR CREATIVE LEARNING	11811 BULL RUN DRIVE	TAMPA	22	1	21
V.I.P. CHILD CARE INC.	3712 W MCKAY AVE	TAMPA	9	9	0
VALDERA COLLAZO, LIDICE DBA MY HAPPY HOUSE, LLC	7005 FERN CT	TAMPA	5	5	0

Data is from the EFS Modernization Database as of August 17, 2023.

PROVIDER NAME	ADDRESS	CITY	CHILDREN SERVED		
			UNDUPLICATED TOTAL	SCHOOL READINESS	VPK
VALDES, ZORANGEL	6534 LA MESA CIR	TAMPA	4	4	0
VALDES-FERNANDEZ, NIURKA DBA MY BLUE STAR CORP	3003 W ROBSON ST	TAMPA	8	8	0
VALVERDE, MAGDA	7504 BRIGHTEN DR	TAMPA	6	0	6
VANGUARD KIDS	12660 SYDNEY RD	DOVER	88	80	11
VEITIA CHAVIANO, LIURIS	4932 ROCKLEDGE CIR	TAMPA	7	7	0
VERTICAL KIDS LEARNING CENTER	3820 COCONUT PALM DR	TAMPA	95	79	23
VICTORY LITTLE KNIGHTS ACADEMY LLC	13901 SHELDON ROAD	TAMPA	22	1	21
WALDEN LAKE EARLY LEARNING CENTER	2730 TURKEY CREEK ROAD	PLANT CITY	60	0	60
WALKER, SONYA J	4111 E RICHMERE ST	TAMPA	14	14	0
WALLACE, ANNETTE	5506 RAINWOOD MEADOWS DR.	APOLLO BEACH	5	5	0
WALTON ACADEMY BEFORE & AFTERSCHOOL ENRICHMENT	4817 N FLORIDA AVE	TAMPA	34	34	0
WARD, IVORY A FAMILY CHILD CARE HOME DBA KIDZ 1ST CHOICE DAYCARE LLC	3003 N 43RD ST	TAMPA	15	15	0
WEST TAMPA EARLY LEARNING CENTER LLC	3812 1/2 N ARMENIA AVE	TAMPA	68	68	0
WESTCHASE EARLY LEARNING CENTER LLC	9802 WESTCHASE DR	TAMPA	62	0	62
WESTMINSTER ACADEMY PRESCHOOL	402 E LUMSDEN RD	BRANDON	19	0	19
WESTTOWN CHRISTIAN ACADEMY	13521 RACE TRACK RD	TAMPA	49	0	49
WHITEHEAD, RAEALYN	1001 MALLETTWOOD DR	BRANDON	2	2	0
WILLIAMS, MARILYN L	1511 E. NEW ORLEANS AVENUE	TAMPA	15	15	0
WILLIAMS, PAMELA DIANE	706 E MADISON ST	PLANT CITY	5	5	0
WINDSOR LEARNING ACADEMY	6920 HANLEY RD	TAMPA	32	24	9
WONDER KIDZ ACADEMY II LLC	8018 HANLEY RD	TAMPA	97	86	16
WOODARD, ANGELIC R. DBA SUCCESSFUL HANDS LEARNING CENTER	4916 S 83RD STREET	TAMPA	5	0	5
WORLDS OF IMAGINATION INC	402 N. COLLINS ST.	PLANT CITY	43	0	43
WRIGHT-CASTILLO, SYLVIA ELIZABETH	10713 N SEMINOLE AVE	TAMPA	7	7	0
YBOR EARLY CHILDHOOD LEARNING CENTER	2003 N 36TH STREET	TAMPA	77	77	0
YBOR EARLY LEARNING CENTER	2003 N 36TH STREET	TAMPA	61	61	0
YMCA BOB SIERRA YOUTH AND FAMILY CENTER	4015 RAGG RD	TAMPA	14	14	0
YMCA CAMP CRISTINA	9840 BALM RIVERVIEW RD	RIVERVIEW	15	15	0
YMCA NORTHWEST HILLSBOROUGH FAMILY	8950 W WATERS AVE	TAMPA	18	18	0
YMCA SUCCESS AFTERSCHOOL ALAFIA	3535 CULBREATH DR	VALRICO	5	5	0
YMCA SUCCESS AFTERSCHOOL ANDERSON	3910 FAIR OAKS AVE	TAMPA	9	9	0
YMCA SUCCESS AFTERSCHOOL BELMONT ELEMENTARY	14150 GATE DANCER RD.	SUN CITY CENTER	28	28	0
YMCA SUCCESS AFTERSCHOOL CARROLLWOOD	3516 MCFARLAND RD	TAMPA	3	3	0

Data is from the EFS Modernization Database as of August 17, 2023.

PROVIDER NAME	ADDRESS	CITY	CHILDREN SERVED		
			UNDUPLICATED TOTAL	SCHOOL READINESS	VPK
YMCA SUCCESS AFTERSCHOOL CITRUS PARK	7700 GUNN HIGHWAY	TAMPA	7	7	0
YMCA SUCCESS AFTERSCHOOL ESSRIG	13131 LYNN ROAD	TAMPA	7	7	0
YMCA SUCCESS AFTERSCHOOL FROST	3950 FAULKENBURG ROAD	RIVERVIEW	17	17	0
YMCA SUCCESS AFTERSCHOOL GORRIE	705 WEST DELEON STREET	TAMPA	1	1	0
YMCA SUCCESS AFTERSCHOOL GRADY	3910 MORRISON AVE	TAMPA	5	5	0
YMCA SUCCESS AFTERSCHOOL HERITAGE	18201 MEADOWS RD	TAMPA	21	21	0
YMCA SUCCESS AFTERSCHOOL IPPOLITO	6874 S FALKENBURG ROAD	RIVERVIEW	18	18	0
YMCA SUCCESS AFTERSCHOOL LAKE MAGDALENE	2005 PINE LAKE DR	TAMPA	21	21	0
YMCA SUCCESS AFTERSCHOOL LIMONA	1115 TELFAIR	BRANDON	12	12	0
YMCA SUCCESS AFTERSCHOOL MITCHELL	205 BUNGALOW PARK AVE	TAMPA	14	14	0
YMCA SUCCESS AFTERSCHOOL NELSON	5413 DURANT RD	DOVER	12	12	0
YMCA SUCCESS AFTERSCHOOL PINECREST	7950 LITHIA-PINECREST RD	LITHIA	5	5	0
YMCA SUCCESS AFTERSCHOOL PIZZO/MOSI	11701 BULL RUN	TAMPA	20	20	0
YMCA SUCCESS AFTERSCHOOL RIVERHILLS	405 RIVERHILLS DRIVE	TEMPLE TERRACE	23	23	0
YMCA SUCCESS AFTERSCHOOL ROOSEVELT	3205 FERDINAND AVE	TAMPA	8	8	0
YMCA SUCCESS AFTERSCHOOL SEFFNER	109 CACTUS ROAD	SEFFNER	4	4	0
YMCA SUCCESS AFTERSCHOOL SESSUMS	11525 RAMBLE CREEK DRIVE	RIVERVIEW	12	12	0
YMCA SUCCESS AFTERSCHOOL SUMMERFIELD	11990 BIG BEND RD	RIVERVIEW	13	13	0
YMCA SUCCESS AFTERSCHOOL SUMMERFIELD CROSSINGS	11050 FAIRWAY MEADOW DR	RIVERVIEW	17	17	0
YMCA SUCCESS AFTERSCHOOL TAMPA PALMS	6100 TAMPA PALMS BLVD.	TAMPA	18	18	0
YMCA SUCCESS AFTERSCHOOL TWIN LAKES	8507 N HABANA AVE	TAMPA	12	12	0
YMCA SUCCESS AFTERSCHOOL WARREN HOPE DAWSON ELEMENTARY	12961 BOGGY CREEK DR	RIVERVIEW	11	11	0
YOUNG INNOVATORS ACADEMY FISHHAWK	16641 FISHHAWK BLVD	LITHIA	25	14	12

Data is from the EFS Modernization Database as of August 17, 2023. School Readiness counts based on enrollment data. VPK counts based on payment data as of the July 2023 reporting period.



FISCAL SUMMARY



PROGRAM FUNDS

Segregation of funds and other local revenues available to the coalition.

FUND TYPE	AMOUNT
School Readiness (SR) funds	\$81,064,782
SR Local Match funds	\$1,304,582
Voluntary Prekindergarten Education (VPK) Program funds	\$30,233,755
American Rescue Plan (ARP) Act funds	\$114,390,472
Coronavirus Aid, Relief, and Economic Security (CARES) Act funds	-
Coronavirus Response and Relief Supplemental Appropriations (CRRSA) Act funds	\$4,875,149
Preschool Development Grant (PDG) funds	\$294,295
Other Local Revenues (including in-kind)	\$2,319,047
TOTAL	\$234,482,081

DETAILS OF EXPENDITURES BY FUND SOURCE

Details of expenditures by fund source, including total expenditures for administrative activities, quality activities, nondirect services, and direct services for children.

FUND TYPE	ADMINISTRATIVE ACTIVITIES	QUALITY SERVICES	NON-DIRECT SERVICES	DIRECT SERVICES FOR CHILDREN	TOTAL
SR	\$3,605,740	\$5,914,508	\$4,652,427	\$66,774,110	\$80,946,784
SR Local Match Funders	-	-	-	\$1,304,582	\$1,304,582
ARPA	\$660,178	\$3,274,516	-	\$110,455,778	\$114,390,472
CARES	-	-	-	-	-
CRRSA	\$156,997	\$4,699,758	-	\$18,394	\$4,875,149
VPK	\$821,471	\$166,735	-	\$29,234,181	\$30,222,388
PDG	\$11,197	\$283,098	-	-	\$294,295
Other Local Revenues	-	-	-	\$2,268,421	\$2,268,421
TOTAL	\$5,255,582	\$14,338,615	\$ 4,652,427	\$ 210,055,466	\$ 234,302,090

COALITION STAFF AND RELATED EXPENDITURES

Total number of coalition staff and the related expenditures for salaries and benefits.



150 ELCHC STAFF



\$11,407,325
SALARY & BENEFITS

AAKASH PATEL

Board Chair
Elevate, Inc.

DR. SHAWN H. ROBINSON, ESQ.

Board Vice-Chair
Law Office of Shawn H. Robinson, Esq.

DR. STEPHANIE HOLMQUIST JOHNSON, PH.D

Board Secretary
Holmquist Educational Consultants (HEC, Inc.)

MICHELLE ZIEZIULA, MUP

Board Treasurer
CareerSource Tampa Bay

AMANDA JAE

Faith-Based Provider Representative
Palma Ceia United Methodist Day School

LEE BOWERS

Board Member
Sunshine Health

DR. DAPHNE FUDGE

Board Member
Your1 Resource Training

TRACYE H. BROWN

Board Member
Hillsborough County Public Schools

DR. DAIRA AVILA BARAKAT

Board Member
Sunshine Dentistry

CYNTHIA CHIPP

Private Provider Representative
Cynthia Chipp Family Child Care Home

DR. LISE FOX

Board Member
Florida Center for Inclusive Communities-
University of South Florida

ADAM GIERY

Board Member
Strategos Group

DR. JACQUELINE JENKINS

Board Member
Hillsborough County Head Start/Early Head Start

DR. JODI MARSHALL

Board Member
Learning Solutions

COMMISSIONER GWEN MYERS

Board Member
Hillsborough Board of County Commissioners

ALLISON NGUYEN, MPH, MCHES®

Board Member
Florida Department of Health-
Hillsborough County

KELLEY PARRIS

Board Member
The Children's Board of Hillsborough County

BETH PASEK

Board Member
Department of Children and Families

MELISSA RABURN

Board Member
Fischbach Land Company

DR. LARISSA RUIZ BAÍA

Board Member
Hillsborough Community College
(HCC) Ybor City Campus

STACIE WARD

Board Member
Vitero Retinal Surgeons, LLC.

DEREK ZITKO

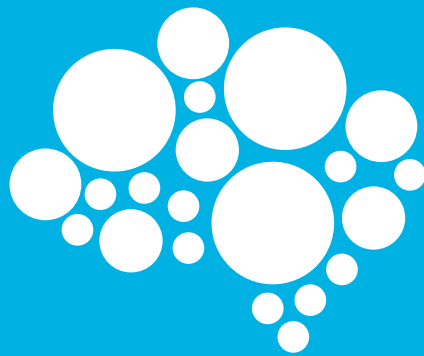
Board Member
Mosaic Company

GINO CASANOVA

Board Member
Shumaker Advisors

CHANTAL PORTE

Board Member
Florida Department of Children and Families



Funded by:



DIVISION OF
Early Learning
LEARN EARLY. LEARN FOR LIFE.