



ANNUAL REPORT

FY 2021-2022



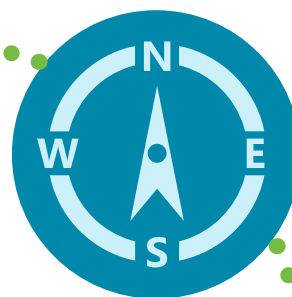
Our Mission:

The Early Learning Coalition of Hillsborough County provides children, birth to 5 years, high quality, equitable and inclusive early learning experiences, preparing them for success in school and life through the collaboration of families, educators and the community.



elhc.org

TABLE OF CONTENTS



Evaluation of Direct Enhancement Service

Comprehensive Consumer Education	1
Provider Financial Supports	3
Training and Technical Assistance	5
Quality Activities for Infant and Toddler Care.....	13
Monitoring.....	15
Inclusion	16

Data Summary

Children Served in School Readiness.....	17
Child Disenrollment	21
Provider Type	22
School Readiness Provider Revocation.....	23*
Voluntary Prekindergarten Provider Revocation..	23*
Children Served by Provider	24

Fiscal Summary

Program Funds	49
Details of Expenditures by Fund Source	50
Coalition Staff and Related Expenditures.....	50

ELCHC Board of Directors

51

* Page 23 contains sensitive information. If you wish to view this page please contact Community Relations at communityrelations@elchc.org



EVALUATION OF DIRECT ENHANCEMENT SERVICES

COMPREHENSIVE CONSUMER EDUCATION

Parents who want or need child care are faced with the challenging task of searching for quality services within a program that is also convenient, affordable, and aligns with their goals for their child's educational attainment. In response, Early Learning Coalition of Hillsborough County's (ELCHC) Operations team has developed a holistic approach to delivering a variety of strategies and resources to support families seeking the right child care placement for the child. The ELCHC's Intake and Eligibility Counselors are certified to offer Child Care Resource and Referrals services (CCR&R) and offer unbiased information and guidance to families about child care options, information to help families identify quality early learning programs, financial assistance strategies and referrals to other community programs and resources as needed. CCR&R is a free service for all families in Hillsborough County.



ELCHC Average Response For Fiscal Year 2021-2022

2,365+ online inquiries related to child care needs

87% average response rate within 24 hours the Customer Relations Center responded to Child Care Resource and Referral calls, online inquiries related to child care needs

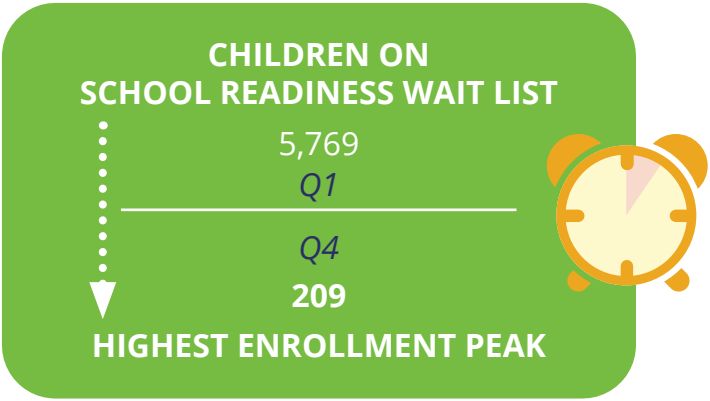
100,406+ phone calls from Hillsborough County families interested in School Readiness, VPK and/or additional resources for young children

1,747 (approximately) families served in person, with 90% served within 10 minutes of arrival

In fiscal year 2021-2022, the majority of ELCHC Intake and Eligibility counselors returned to in person appointments and services at the ELCHC office. The lobby was used as an essential resource to ensure families have the technology assistance needed to complete the online School Readiness (SR) and/or Voluntary Prekindergarten (VPK) application process. In addition, the ELCHC has partnered with seven Children's Board of Hillsborough County Family Resource Centers, which remained open during COVID-19.

In addition to supporting the School Readiness and VPK application processes, the ELCHC maintains a comprehensive database of child care providers throughout Hillsborough County, including licensed child care centers and family child care homes as well as license-exempt facilities. CCR&R-certified counselors use this data to create customized lists of facilities for families seeking child care.

The 2021-2022 fiscal year provided a financial opportunity for the ELCHC to open the wait list for School Readiness services. With an open wait list, the ELCHC was able to offer School Readiness financial assistance to all priorities for the program. During the first quarter of the fiscal year, the number of children on the School Readiness wait list peaked at 5,769. With the additional funding for services, the ELCHC reduced the number of children on the School Readiness wait list to 209 at its highest enrollment peak during the fourth quarter. On average, the wait list was completely clear of children waiting for service beginning in March 2022. During this time, the ELCHC provided CCR&R services to families on how to locate quality early learning environments, the importance of early literacy programs and age-appropriate milestones. Additionally, 300 parent education kits were distributed to child care providers in efforts to help support parents with positive social-emotional learning activities that can occur in the home.



To assist in promoting awareness for services and early childhood education, ELCHC team members participate in community outreach events. These events ranged from distribution of learning materials to families to education focused sponsorships. The Early Learning Coalition continued its partnership with Feeding Tampa Bay and Bess the Book Buss to provide literacy materials to families at the Feeding

Tampa Bay Mobile Pantry on-site in the Coalition's parking lot.

In addition to community outreach, the ELCHC staff continued the Five for Five series, which shares at home activities to develop the five stages of development in children before age 5. In December 2021, the ELCHC hosted a community outreach event sponsored by local funding, to distribute developmentally age-appropriate quality toys and learning resources to families during the holidays.



PROVIDER FINANCIAL SUPPORTS

The ELCHC continues to incentivize and assist providers in meeting child care performance standards, implement curricula, and provider professional development opportunities. These supports help improve the overall consistency and quality of School Readiness programs throughout Hillsborough County.

Fiscal year 2021-2022 presented exciting opportunities for the ELCHC to support the child care provider community with the addition of several new grants. Funding from the Coronavirus Response and Relief Supplemental Appropriations Act (CRRSA Act) facilitated the following financial support for our providers. These workforce initiatives were designed to recruit, upskill, and retain Early Childhood staff and providers.



- **Business Leadership Training**

We graduated 91 Early Childhood Professionals from a business course that focused on best practices in entrepreneurship, budgeting, and planning for the future. The coursework was supplemented by a technology package and training for a total cost of \$557,390

- **Longevity Bonuses**

We were able to give stipends to 1,285 practitioners who have shown a commitment to the Early Childhood field by providing a stable environment with continuity of care for children for a total cost of \$1,188,375

- **School Readiness Provider Recruitment**

We helped 17 new School Readiness providers set up developmentally appropriate environments by awarding them \$68,000 in classroom materials.

- **New Hire Stipends**

59 programs were awarded \$83,000 to offset the cost of recruiting and on-boarding 134 new teachers. The new teachers also received a retention bonus of \$250 after staying two weeks.

- **CLASS Stipends**

The Coalition was able to award 67 practitioners who successfully completed CLASS training by awarding them a \$250 stipend for a total cost of \$16,750

- **VPK Training Stipends**

We were also able to upskill 167 VPK staff by awarding them a \$150 achievement bonus upon completion of the new mandated trainings for a total cost of \$25,050

We continue to listen to our providers needs and develop innovative ways to recruit, upskill and retain personnel in the important work of caring for our children. Coronavirus-related funding also allowed for financial grants to child care programs. Two of those grants opportunities were presented through the CRSSA Act Phase VI grants and the American Rescue Plan Act (ARPA).

CRSSA ACT PHASE VI GRANT

Providers Applied & Received Funding: **800**

Amount Invested Back To Early Education Community: **\$16,891,674**

The intent of the Phase VI grants was to assist child care programs to remain open during the COVID-19 crisis. Phase VI grants allowed for upskilling and retention bonuses to child care and early education programs.

AMERICAN RESCUE PLAN ACT (ARPA)

Providers Applied & Received Funding: **974**

Amount Invested Back To Early Education Community: **\$52,376,239**

The American Rescue Plan Act (ARPA) grants aim to support early learning/child care providers that were licensed/regulating by or before March 11, 2021 or that are Child Care and Development Fund eligible at the time of application and are providing early learning/child care services on the date of the application to assist providers in remaining open. Applications were approved from March to June 2022. ARPA grants are paid in three installment payments.





TRAINING AND TECHNICAL ASSISTANCE

The ELCHC together with Champions for Children, Early Childhood Council of Hillsborough County, University of South Florida Program-Wide Behavioral Support, Frameworks, and WEDU, offered 60 in person and virtual trainings and learning events to our provider community.

ELCHC hosted its 3rd Early Childhood Conference on May 6, 2022, called “Teacher’s Night Out”. Teacher’s Night Out was specifically designed to reinvigorate and reward early educators for their dedication to the field. Early childhood professionals had an opportunity to gather with others safely and carefully outdoors, listen to hand-selected, informational speakers and spend an evening networking. Selected developmentally appropriate materials were given to providers to support learning in the classroom, and QR codes with links directly to lesson plans were available to connect those materials to resources. There were approximately 300 in attendance, including teachers, directors, staff, community partners and ELCHC board members.

TARGETED TECHNICAL ASSISTANCE WAS OFFERED FOR THE FOLLOWING TRAININGS:

Master CLASS Series, Jump Start your CLASS, HITI, Quality Improvement and CLASS Group Coaching

Technical Assistance consists of:

Master CLASS (Classroom Assessment Scoring System) Series:

After attending an orientation session, teachers will review individual score reports from the CLASS assessment tool with Coaches to identify areas for growth and patterns or trends in their score report. Teachers are also able to reflect on their observation and identify behaviors or interactions they can improve on and improve their practice.

Jump Start Your CLASS:

Providers clarification of terminology used during observations: 1 cycle of CLASS is completed to provide feedback for improvements and suggestions

for strategies to implement are given to the teacher.

Hillsborough Infant & Toddler Initiative (HITI):

Teachers select a topic of their choice in which they would like support. DAP, Classroom Management, CLASS, etc. 2 cycles of the CLASS tool are completed and feedback for improvements and suggestions for strategies to implement are given to the teacher.

Quality Improvement Plan (QIP):

Various forms of TA are provided based on teachers wants/needs including Room Arrangement for improved visibility of children and effective interactions.

CLASS Group Coaching:

Additional resources from Teachstone such as assigned readings, exemplar videos and reflection journals with

EARLY LEARNING STANDARDS

Implementing the Florida Standards In Preschool Classrooms: 3 Years Old To Kindergarten

This training is based on the newly revised Florida Early Learning and Developmental Standards and provides an overview of the standards used in preschool classrooms serving children ages three years old to Kindergarten. This training meets the lead VPK instructor training requirements and incorporates the standards approved for use in VPK programs. Examples of developmentally appropriate instructional strategies for preschool age children are provided throughout the training along with information about purposeful planning, reflective practice and qualities of an effective educator.

Integrating the Standards: Phonological Awareness

This 2-hour instructor-led training is designed for VPK instructors and directors. With a focus on the key elements of early language and literacy development, participants will gain an understanding of what phonological awareness is and how it connects to reading and writing. Through demonstration and experiencing activities, learners will move through the progression of acquiring phonological awareness. Learners will also gain practical information about how to plan activities and implement these activities in the preschool classroom.

Dialogic Reading: Language And Vocabulary Development for Preschoolers

This instructor-led course is appropriate for administrative staff, directors, and teachers of 3-, 4-, and 5-year-old children. Participants will learn Dialogic Reading as a strategy used with books to promote vocabulary and oral language skills. In Dialogic Reading, the book becomes a shared visual and verbal context in which you and your children can learn new words. This course consists of three learning components: the online or instructor-led component, a lesson planning and practice component, and a virtual reflection session.

CHILD SCREENINGS AND ASSESSMENTS

Child Assessment Orientation: What Now?

This orientation is for those who are currently participating in child assessment and will discuss expectations connected to child assessment. The expectations include roster information, assessment tool reliability, benchmark dates, how to document completion and technical assistance.

Introduction to Teaching Strategies Gold

Teaching Strategies Gold is an authentic, ongoing, observation-based assessment system that helps teachers and administrators focus on what matters most for children's success. This training will explore the basic Gold platform which allows documentation to be added and used to track a child's educational progress.

Ages and Stages Questionnaire 3rd Edition (ASQ-3)

This learning event is designed for teachers, directors and childcare providers who are implementing early care and education for Infant, Toddler and Preschool children. This event will assist with understanding the background and development of the ASQ-3 and it will provide the most recently designed training in administering, scoring and discussing the results of the questionnaire with families and appropriate agencies. Participants will leave this learning event ready to accurately administer, score and sensitively discuss the results of the ASQ-3.

Ages and Stages Questionnaire Social Emotional 2nd Edition

This learning event is designed for teachers and directors who are providing early care and education for preschool children, particularly those with social emotional concerns. This learning event will help you administer, score and discuss results of the questionnaire with families. This event will also address effective strategies that promote positive social and emotional development. The ASQ SE 2 training supports the CLASS Domains by providing insight into the social emotional needs of young children. The assessment and follow-up knowledge addressed in this training support the provision of emotional support that is a key in them being able to function in a classroom environment.

Observation, Documentation And Assessment In Early Childhood Classrooms

This learning event will provide information on writing purposeful, objective observations of children. Participants will have many opportunities to distinguish between subjective and objective observations and writing factual, purposeful observations. We will explore a variety of strategies for recording, organizing and documenting observations to inform planning, assessment and communication with families. These activities will benefit early childhood teachers using any curriculum or assessment of learning.

Orientación De La Clase Magistral Y Comprensión De Su Puntaje De CLASS

Únase a nosotros para ver más de cerca la herramienta CLASS, así como los requisitos para la Evaluación del Programa de Preparación Escolar. Ahora que ha tenido su observación CLASS, ¿cuál debería ser su próximo paso? ¡Sus puntajes de CLASS le brindan más información sobre su práctica docente de la que cree! Venga y explore cómo “leer” la historia de sus puntajes CLASS.

Master CLASS Orientation & Understanding Your CLASS Score

Join us to get a closer look at the CLASS tool, as well as the requirements for the School Readiness Program Assessment. Now that you have had your CLASS observation, what should be your next step? Your CLASS scores give you more information about your teaching practice than you think! Come and explore how to “read” the story of your CLASS scores.

VPK Assessment Instructional Implications

This professional development is appropriate for VPK directors, administrators, and teachers who have administered the VPK Assessment. Participants will review the VPK Assessment Online Reporting System score types, reports, and instructional resources for planning instruction based on VPK Assessment data.

DEVELOPMENTALLY APPROPRIATE CURRICULA AND CHARACTER DEVELOPMENT

Talk Read Sing Trusted Messenger Training

TALK READ SING is a community-wide initiative that aims to push the message that learning begins at birth and that early positive brain stimulation and development changes the trajectory of a child's life! The folks who deliver this message (like you!) are called Trusted Messengers.

Creative Curriculum for Infants, Toddlers & Twos 3rd Edition Refresher

This is a refresher for teachers/staff who have taken the full Creative Curriculum training previously. You should have all volumes and already be familiar with (The Foundation, Routines and Experiences, The Objectives for Development and Learning) and the supplemental materials (Mighty Minutes, Intentional Teaching Cards, Book Discussion Cards) included in the curriculum kit.

Creative Curriculum for Infants, Toddlers & Twos, 3rd Edition Refresher - Español

Este es un repaso para los maestros / personal que han tomado el curso completo del Creative Curriculum anteriormente. Debes tener todos los volúmenes y ya estar familiarizado con (The Foundation, Routines and Experiences, The Objectives for Development and Learning) y los materiales complementarios (Mighty Minutes, Intentional Teaching Cards, Book Discussion Cards) incluidos en el paquete del currículo.

Creative Curriculum For Preschool 3rd Edition Refresher

This is a refresher for teachers/staff who have taken the full Creative Curriculum training previously. You should have all volumes and already be familiar with (The Foundation, Routines and Experiences, The Objectives for Development and Learning) and the supplemental materials (Mighty Minutes, Intentional Teaching Cards, Book Discussion Cards) included in the curriculum kit.

Creative Curriculum for Preschool 3rd Edition Refresher *Español*

Este es un repaso para los maestros / personal que han tomado el curso completo del Creative Curriculum anteriormente. Debes tener todos los volúmenes y ya estar familiarizado con (The Foundation, Routines and Experiences, The Objectives for Development and Learning) y los materiales complementarios (Mighty Minutes, Intentional Teaching Cards, Book Discussion Cards) incluidos en el paquete del currículo.

Frog Street Curriculum- Infant/Toddler

Frog Street is a comprehensive, research-based curriculum that integrates instruction across developmental domains and early learning disciplines. Make sure you're ready for the new school year.

Frog Street Curriculum- Pre-K

Frog Street is a comprehensive, research-based curriculum that integrates instruction across developmental domains and early learning disciplines. Make sure you're ready for the new school year.

Frog Street Curriculum- Pre-K *ESPANOL*

Frog Street es un currículo integral basado en la investigación que integra la instrucción en todos los dominios del desarrollo y disciplinas de aprendizaje temprano. Asegúrese de estar listo para el nuevo año escolar!

FSU 10 Components of Quality Care for Infants & Toddlers Curriculum & Individualization

This training will look at curriculum for infants and toddlers and the importance of individualized programming. Practitioners will explore curriculum within the context of relationships and the importance of observing children for individualization.

Hook Them With Books

This learning event is designed for new and veteran preschool teachers. Learners will learn how to create a literacy-rich environment preparing preschoolers for kindergarten. Learners will also have an opportunity to create developmentally appropriate literacy activities and materials.

Master CLASS Infant Planning And Exploration

Come learn more about how you can incorporate the CLASS tool in your own classroom! This highly interactive course is designed to introduce learners to strategies they can use to be prepared for learning and child interactions in the classroom. Learners will explore how to adapt their current classroom planning practices to make the most of their time with children while increasing the effectiveness of the interactions they have with children.

Master CLASS Planning For Instruction

Now that you are writing objective observations on the children, what's next? Observations are a way for teachers to plan for instruction. Understanding the interest and needs of your children is key to planning activities and meaningful experiences that will enrich their learning. In this training we will use your observations to create lesson plans that will be intentionally created to meet the needs of the children in your classroom.

Master CLASS Toddlers And Centers

Please join us to learn how center time can be the most productive instructional time in your day. We will discuss how to set up, equip and use your classroom centers to engage toddlers in play-based instruction and effective interactions.

Master CLASS Language, Literacy, Communication with Planning for I/T

Join us for a closer look at the CLASS tool, as well as the requirements for the School Readiness Program Assessment. Now that you have had your CLASS observation, what should your next step be? There will be two sessions to provide Infant and Toddler Language, Literacy and Communication strategies as well as Planning and Exploration designed to help you improve your CLASS score.

Master CLASS Lenguaje, Alfabetización, Comunicación Con Planificación Para Infantes/Niños

Únase a nosotros para ver más de cerca la herramienta CLASS, así como los requisitos para la Evaluación del Programa de Preparación Escolar. Ahora que ha tenido su observación CLASS, ¿cuál debería ser su próximo paso? Habrá dos sesiones para proporcionar estrategias de lenguaje, alfabetización y comunicación para bebés y niños pequeños, así como planificación y exploración diseñadas para ayudarlo a mejorar su puntaje de CLASS.

Master CLASS Pre-K Language/Literacy With STEM

Come learn more about how you can incorporate the PRE-K CLASS tool in your own classroom! This highly interactive course is designed to introduce learners to strategies they can use in the classroom to incorporate literacy and language as well as STEM. Learners will explore how to adapt their current classroom practices to make the most of their time with children while increasing the effectiveness of the interactions they have with children

Master CLASS Pre-K Idioma/Literatura Con STEM

¡Venga a aprender más sobre cómo puede incorporar la herramienta PRE-K CLASS en su propio salón de clases! Este curso altamente interactivo está diseñado para presentar a los alumnos estrategias que pueden usar en el aula para incorporar la alfabetización y el lenguaje, así como STEM. Los alumnos explorarán cómo adaptar sus prácticas actuales en el aula para aprovechar al máximo su tiempo con los niños y, al mismo tiempo, aumentar la eficacia de las interacciones que tienen con los niños.

Master CLASS- Toddler CLASS Language And Literacy

Come learn more about how you can incorporate the Toddler CLASS tool in your own classroom! Opportunities to develop language and literacy skills happen all through the toddler's busy day from listening to stories, to participating in songs and finger plays, to conversations during play, lunch and diapering! This highly interactive course is designed to introduce learners to strategies they can use in the classroom and explore how to adapt current classroom practices to make the most of their time with children while increasing the effectiveness of their interactions.

Math 1: Making Sense Of Sets And Numbers

This 3-hour instructor-led training is designed for VPK instructors and directors but is suitable for teachers of preschool-age children. Participants will gain early math knowledge and practical information about how to structure the classroom environment and plan activities to integrate math concepts and skills throughout the learning day. The training focuses on using attributes to sort and compare sets, as well as exploring quantities, numerosity, subitizing, and cardinal numbers.

Math 2: Counting And Operating With Numbers

This 3-hour instructor-led training is designed for VPK instructors and directors but is also suitable for teachers of preschool-age children. Participants will gain early math knowledge and practical information about how to structure the classroom environment and plan activities to integrate math concepts and skills throughout the learning day. The training focuses on the big ideas of counting and number operations such as the principles of counting, common counting errors and strategies for helping children rectify these errors, adding, subtracting, and subitizing.

Math 3: Patterns, Measurement And Data

This 3-hour instructor-led training is designed for VPK instructors and directors but is suitable for teachers of Preschool-age children. Participants will gain early math knowledge and practical information about how to structure the classroom environment and plan activities to integrate math concepts and skills throughout the learning day. The training focuses on using the classroom to explore patterning, using different attributes in measurement (such as length, capacity, circumference, quantifying and direct & indirect comparisons), and answering authentic questions through representing, collecting and interpreting data.

Math 4: Shapes And Spatial Relationships

This 3-hour instructor-led training is designed for VPK instructors and directors but is suitable for teachers of Preschool-age children. Participants will gain early math knowledge and practical information about how to structure the classroom environment and plan activities to integrate math concepts and skills throughout the learning day. The training focuses on developmentally appropriate experiences for exploring geometry and spatial relationships with young children, such as defining and analyzing 1-, 2- and 3-dimensional shapes and symmetry, and perspective-taking and visualizing space.

Book Embedded Vocabulary Instruction: Language And Vocabulary Development For Preschoolers

This instructor-led course is appropriate for administrative staff, directors and teachers of 3-, 4-, and 5-year-old children. Participants will learn Dialogic Reading as a strategy used with books to promote vocabulary and oral language skills. In Dialogic Reading, the book becomes a shared visual and verbal context in which you and your children can learn new words.

Planning For Instruction

Now that you are writing objective observations on the children, what's next? Observations are a way for teachers to plan for instruction. Understanding the interest and needs of your children is key to planning activities and meaningful experiences that will enrich their learning. In this training we will use your observations to create lesson plans that will be intentionally created to meet the needs of the children in your classroom.

Phonological Awareness Development For Preschoolers

This training is appropriate for preschool educators and directors, and is open to all. Participants will have an opportunity to participate in hands-on activities supporting developmentally appropriate instruction in phonological awareness as well as explore the phonological awareness stages of development.

Creative Curriculum For Preschool - 6th Edition

This highly interactive 3-day learning event will help teachers of all levels implement The Creative Curriculum for Preschool in their classroom. Teachers will become familiar with the 38 objectives for Development and Learning that inform every aspect of teaching. They will explore and practice using the knowledge-building volumes and daily resources. Through small and large group discussions and activities, teachers will learn how to implement a study, use Teaching Guides, create a lesson plan, and discover how to integrate content into daily events through intentional teaching experiences.

TEACHER-CHILD INTERACTIONS

CLASS Observation Refresher For Regions 3 & 4

Are you prepared for your next CLASS (Classroom Assessment Scoring System) School Readiness Program assessment? Let us help you refresh your understanding of the CLASS tool! This course is for providers who have been through the CLASS observation process before but want to refresh their understanding of the observation & assessment process and the CLASS criteria for quality interactions for which they are being observed. This 2-hour online training addresses all three age groups - infant, toddler and preschool - and offers basic information, resources and time for questions and discussion about upcoming CLASS observations.

CLASS Group Coaching (MMCI) Infant Toddler

Making the Most of Classroom Interactions (MMCI) helps early childhood professionals engage with the Classroom Assessment Scoring System (CLASS) as they identify and understand the interactions that increase children's learning and development. Participants will learn how to use the CLASS observation tool for considering teaching practices and guiding observations of classroom videos and real-life interactions.

CLASS Group Coaching (MMCI) Infant Toddler - Español

Making the Most of Classroom Interactions (MMCI) ayuda a los profesionales de la primera infancia a involucrarse con el Sistema de puntuación de evaluación en el aula (CLASS) a medida que identifican y comprenden las interacciones que aumentan el aprendizaje y el desarrollo de los niños. Los participantes aprenderán a usar la herramienta de observación CLASS para considerar las prácticas de enseñanza y las observaciones de los videos del aula y las interacciones de la vida real.

CLASS Group Coaching (MMCI) Pre-K

CLASS Group Coaching (MMCI) helps early childhood professionals engage with the Classroom Assessment Scoring System (CLASS) as they identify and understand the interactions that increase children's learning and development. Participants will learn how to use the CLASS observation tool for considering teaching practices and guiding observations of classroom videos and real-life interactions.

Master CLASS Infant CLASS & Routines

Routines occur throughout the Infants' Day - arrival, play, meals, changing diapers, napping. Through routines, we introduce the infant to the world of safety, and knowledge of their surrounding environment. How can you make the most of routine times with the children while increasing the effectiveness of your interactions? We invite you to participate and learn more about how to incorporate the CLASS tool into your own classroom! This highly interactive virtual course is designed to introduce students to strategies they can use to make the most of routine times in the classroom! We will be using the ZOOM platform.

Master CLASS- Toddler CLASS & Routines

Routines happen all through the toddler's day - arrival, play, meals, diapering/toileting, napping - how can you make the most of your time with children while increasing the effectiveness of your interactions during these seemingly 'mundane' times? Come learn more about how to incorporate the CLASS tool in your own classroom! This highly interactive course is designed to introduce learners to strategies they can use to make the most out of routine times in the classroom!

Master CLASS - Pre-K CLASS & Routines

Come learn more about how you can incorporate the CLASS tool in your own classroom! This highly interactive course is designed to introduce learners to strategies they can use with their everyday classroom routines. Learners will explore how to adapt their current classroom practices to make the most of their time with children while increasing the effectiveness of the interactions they have with children.

Master CLASS Pre-K CLASS & Group Time: "Let's Talk Groups"

Come learn more about how you can incorporate the CLASS tool in your own classroom! This highly interactive course is designed to introduce learners to strategies they can use to be prepared for learning and child interactions in the classroom. Learners will explore how to adapt their current classroom planning practices to make the most of their time with children while increasing the effectiveness of the interactions they have with children.

FSU 10 Components of Quality Care for Infant & Toddlers-Emerging Language & Literacy

The path to language and literacy begins with interactions between adults and young children. In quality programs, teachers build language experiences within daily routines. When possible, teachers speak the primary or home language of the children. They respond to the sounds made by infants and toddlers and use words to give meaning to what children are expressing. Teachers maintain a balance between listening to and talking with each child. Books and other print materials are available throughout the classroom. Shared reading is enjoyed daily, and families are encouraged to read with their children at home. Songs, nursery rhymes, finger plays, and pre-writing materials promote the development of language and literacy. This training will provide strategies to promote these early language and literacy for children birth to 36 months.

Master CLASS- Toddler CLASS & Supporting Independence

Come learn more about how you can incorporate the Toddler CLASS tool in your own classroom! This highly interactive course is designed to introduce learners to strategies they can use in the classroom to facilitate toddlers' competency in navigating their world. Toddlers need many meaningful opportunities to make decisions, develop responsibility, practice self-care skills and engage with other toddlers. Learners will explore how to adapt their current classroom practices and increase the intentionality of their interactions with children to effectively promote toddlers' autonomy and independence. This learning event will be conducted on Zoom format.

Understanding Sensory Processing & Behavior

This learning event is designed for teachers and directors who are providing early care and education for children with special needs and/or developmental differences. This learning event will help learners understand how some children process sensory information differently than others and how their behavior may reflect either an over sensitivity or an under sensitivity to sensory information. Strategies for helping all children develop their sensory systems will be included in this interactive event.

AGE-APPROPRIATE DISCIPLINE PRACTICES

Active And Responsive Care-Giving

Responsive care-giving helps infants and toddlers begin to understand and regulate their emotions, and provides predictability, safety, and security. Responsive caregivers take cues from each child and know when to expand on their initiative, when to guide, and when to intervene. They respond to signs of stress in children and provide comfort and security as needed. Caregivers promote the child's emerging sense of self and relationships with others and show acceptance and respect for all children. This training will provide strategies to support children's relationships with adults, support for transitions, how to nurture young children during routines and provide responsive guidance.

Supporting Social and Emotional Learning (SEL) In The Preschool Years

Calling all directors, owners and program leaders! An exciting opportunity to incorporate social emotional learning in your program! Through a partnership with Frameworks we are excited to offer Social Emotional Trainings that will help you integrate Second Step curriculum. In this training, the SEL competencies will be introduced along with the Second Step® curriculum as a tool for including SEL throughout an early childhood program day. Videos will be shared, and participants will have an opportunity to discuss best practices for facilitation into their programs. Also, you will get a FREE Second Step curriculum kit and Conscious Discipline Parent Education kit!

Preschool Social Emotional Growth

The training will include the use of PBS online resources to share ways to promote healthy social-emotional growth in preschoolers. The facilitator will share videos, hands on activities, books, games and creative ideas to help children navigate emotions and social situations, as well as communications strategies to use with families. Learners will leave with ideas to use immediately in their learning centers.

HEALTH AND SAFETY

Traumatic Experiences

The training will focus on traumatic experiences that students may bring to learning centers and preschools. We will use PBS online resources to identify different traumas that children may experience, the behaviors that may be present after or during trauma, and how to help these children cope. We will also discuss ways to work with families experiencing trauma. There will be a segment of the training that will focus on Covid 19 and its potential impact on our communities, along with ways to help.

FIRST AID

CPR, First Aid, And Fire Safety Training

This training, in accordance with guidelines released by national, state, and local governments, is designed to train and prepare our childcare providers with CPR, First Aid and Fire Extinguisher skills.

BUSINESS ADMINISTRATION

Complaints Welcomed

Frustrated by complaints from parents, teachers and stakeholders? Explore the best way to receive and effectively respond to complaints in your child care business. Strategies to become an effective complainer will also be given to increase your communication skills with others. Increase your professionalism and lower your stress level with a plan.

Complaints Welcomed: Staff Edition

Frustrated by complaints from parents and colleagues? Explore the best way to receive and effectively respond to complaints in your classroom. Strategies to become an effective listener and complainer will also be given to increase your communication skills with others. Increase your professionalism and lower your stress level with a plan.

Effectively Communicating With Families

This learning event is designed for preschool teachers and directors, particularly those with developmental differences. This learning event will assist you in developing effective communication skills with families in order to successfully support inclusion for all children.



QUALITY ACTIVITIES FOR INFANT AND TODDLER CARE

During the 2021-2022 fiscal year, the Hillsborough Infant & Toddler Initiative (HITI) facilitated activities throughout the year to enhance infant & toddler care in the county. Recruitment efforts resulted in 7 early childhood programs (3 family child care homes and 4 centers) to participate in the Initiative to focus on improving the quality of care for children birth to 36 months. Fifteen previous HITI programs renewed their commitment to improving infant and toddler care through continued implementation of special projects and family engagement activities.

The goal of the initiative is to increase the quality of care provided to infants and toddlers. The ELCHC does this through coaching, technical assistance, professional development, training, and providing materials.

Early Childhood Administrators in HITI focused on program improvements targeted specifically for infant and toddler care by using the Florida State University 10 Components of Quality Care for Infants and Toddlers. The 10 Components training and program assessment tools were used to guide program improvement efforts and enhance teacher skills. Each program chose one Component to guide their program improvements for 2021-2022. Four trainings from the 10 Components (Curriculum & Individualization, Active and Responsive Care-giving, Emerging Language and Literacy and Environments for Learning) were conducted and offered to all infant/toddler providers. Pre and Post scores are used to assess learning gains from the FSU 10 Components training. The table below illustrates learning gains from those learner assessment tools.

Program	FSU Component (7 of 10)	Pre Score	Post Score
Program 1	Environments	65.3	95.9
Program 2	Family Engagement & Cultural Continuity	90.0	93.8
Program 3	Comprehensive Support Services	73.3	83.3
Program 4	Staff Well Trained	73.3	100.0
Program 5	Family Engagement & Cultural Continuity	78.1	100.0
Program 6	Family Engagement & Cultural Continuity	53.0	Post Score Pending
Program 7	Family Engagement & Cultural Continuity	90.6	Post Score Pending

The professional development/training hours reported by the infant/toddler teaching staff and administrators at the seven HITI sites totaled 496.5 training hours. One teacher completed all criteria to obtain her Infant/Toddler Child Development Associate in the Spring of 2022.

Classroom environments were enhanced by providing programs with new materials and equipment, and 5 new classrooms were created to serve infants and/or toddlers. Funding totaling \$75,675 went toward enhancing or creating new classrooms to serve more infants and toddlers.

Professional development funding totaling \$8,200 was disseminated to teachers to maintain staff and provide consistent continuity of care for infants and toddlers.

The improvement in the quality of care provided to infants and toddlers was measured by the Infant and Toddler CLASS observation results. There were HITI programs whose original CLASS School Readiness Program Assessment (SRPA) scores were in the range to be considered moderate to high-quality programs and therefore coaching was not provided. The average CLASS scores for the early childhood programs participating in the Hillsborough Infant & Toddler Initiative as of 6/30/2022 was 5.04.



Coaching and technical assistance was provided in infant and toddler classrooms receiving below 4.0 on the pre-CLASS assessment. Three teachers' CLASS scores fell below the 4.0 cut-and was eligible to receive coaching, however; due to staff turnover only 1 teacher completed coaching and received a post-CLASS assessment at the end of the year.



PRE/POST RESULTS:

Pre-Toddler CLASS score: 4.18

Post-Toddler CLASS score: 4.89

Kindermusik Curriculum for 1 and 2-year-olds was purchased for early childhood programs who participated in the Hillsborough Infant & Toddler Initiative for 2021-2022. Both program administrators and teachers received face-to-face training on the curriculum and received Kindermusik Curriculum Kits (materials) as well as online resources for parents to access music activities for their toddler or 2-year-old at home. The Kindermusik Curriculum will be used as a supplemental curriculum to increase children's overall learning and development through engaging in music and movement activities and exploring musical instruments.

Current and previous HITI programs participated in Anytime is 3Ts Time as a family engagement activity. Early childhood programs not in HITI were also invited to participate. A total of 17 early childhood programs participated in the Anytime is 3Ts Time Project. A total of 48 families visited the website and completed the 7 modules to earn the 3Ts Champions Certificate. Families received age-appropriate learning materials shipped to their home for earning their certificate. The project helped to build a bridge between home and school and with the intent to encourage language, literacy, math, cognitive and fine motor development.



MONITORING

The ELCHC Operations Team team conducts monitoring of contracted School Readiness and Voluntary Prekindergarten (VPK) programs to ensure contract compliance. Consequences for noncompliance are determined in accordance with state rule and law as well as the ELCHC's Progressive Enforcement Procedures. During the 2021-2022 fiscal year, the ELCHC went back to on-site monitoring for both the School Readiness and VPK programs.

Florida VPK

157 VPK Programs



Staff monitored to ensure each provider's program met the terms and conditions of the State of Florida Statewide Voluntary Prekindergarten (VPK) Provider Contract. ELCHC staff monitored private providers. Hillsborough County Public Schools (HCPS) conducted the monitoring of HCPS Voluntary Prekindergarten schools.

School Readiness Program (SR)

TIER 1

ELCHC Staff performed Tier 1 desk reviews in accordance with State requirements. The desk review analyzes if providers have met the several components of the School Readiness Provider Contract.

752 SR Programs

TIER 2

In addition, staff monitored contracted School Readiness program providers using the Statewide Provider Monitoring Tool for Tier 2 compliance. These providers were both randomly selected and providers who were considered high risk due to the results of a previous monitoring.

145 SR Programs

INCLUSION

The ELCHC provides inclusion support services to providers and families in Hillsborough County. The local Warm Line is available to all child care centers, family child care homes and parents who request assistance regarding child care arrangements or concerns for their children with special needs. The warm line is operated by the ELCHC and provides inclusion supports.



WARM LINES
SERVICES

287+
FAMILIES &
PROVIDERS

Screening and intervention services are also provided to children in the School Readiness program through the Screening and Assessment team at the ELCHC. Each year, all children in the School Readiness program birth-kindergarten entry are screened for developmental concerns using the Ages and Stages Questionnaire 3 (ASQ-3). The results of the ASQ-3 are reported to the ELCHC for follow up. This follow up may include intervention support plans or referral for development evaluation. During the 2021-2022 fiscal year, changes to the School Readiness rule requirements included the addition of the ASQ-SE, which focuses on the child's social-emotional development. Including the ASQ-SE in the screening process allowed for parents, caregivers and providers to gain access to appropriate screenings to assess a child's mental health. This also allowed for the ELCHC screening staff to develop a plan for intervention that focuses on the whole child and in all areas of development. In efforts to support the child care community in conducting these screenings, the ELCHC distributed 100 ASQ-3 kits to providers.

ASQ SCREENINGS PROCESSED

ASQ-3: **9,499**

ASQ-SE: **5,232**

ADDITIONAL SUPPORTS ISSUED

Intervention Support Plans: **2,289**

3-5 Years Old -
Developmental Evaluation Referral
With HCPS: **190 Children**

Birth-5 Years Old -
Developmental Evaluation Referral
With Early Steps: **156 Children**

Intervention Support Plans assist families and providers in supporting areas of developmental concern per the ASQ-3 screening results.

The ELCHC worked with the Early Childhood Council to provide one on one support for children related to adaptations and accommodations. The Early Childhood Council served nearly 48 children during the fiscal year, in a variety of child care settings. The Early Childhood Council also conducted trainings around Ages and Stages Questionnaire, adaptations and trauma informed practices.



300
SEL KITS

Through the use of Preschool Development Grant funding, the ELCHC distributed 300 Social Emotional Learning kits to the provider community. These kits aim to increase positive social emotional experiences both at home and in the child care community. A community partner, Frameworks, collaborated with the ELCHC to provide several trainings around Social Emotional Learning in preschool classrooms.

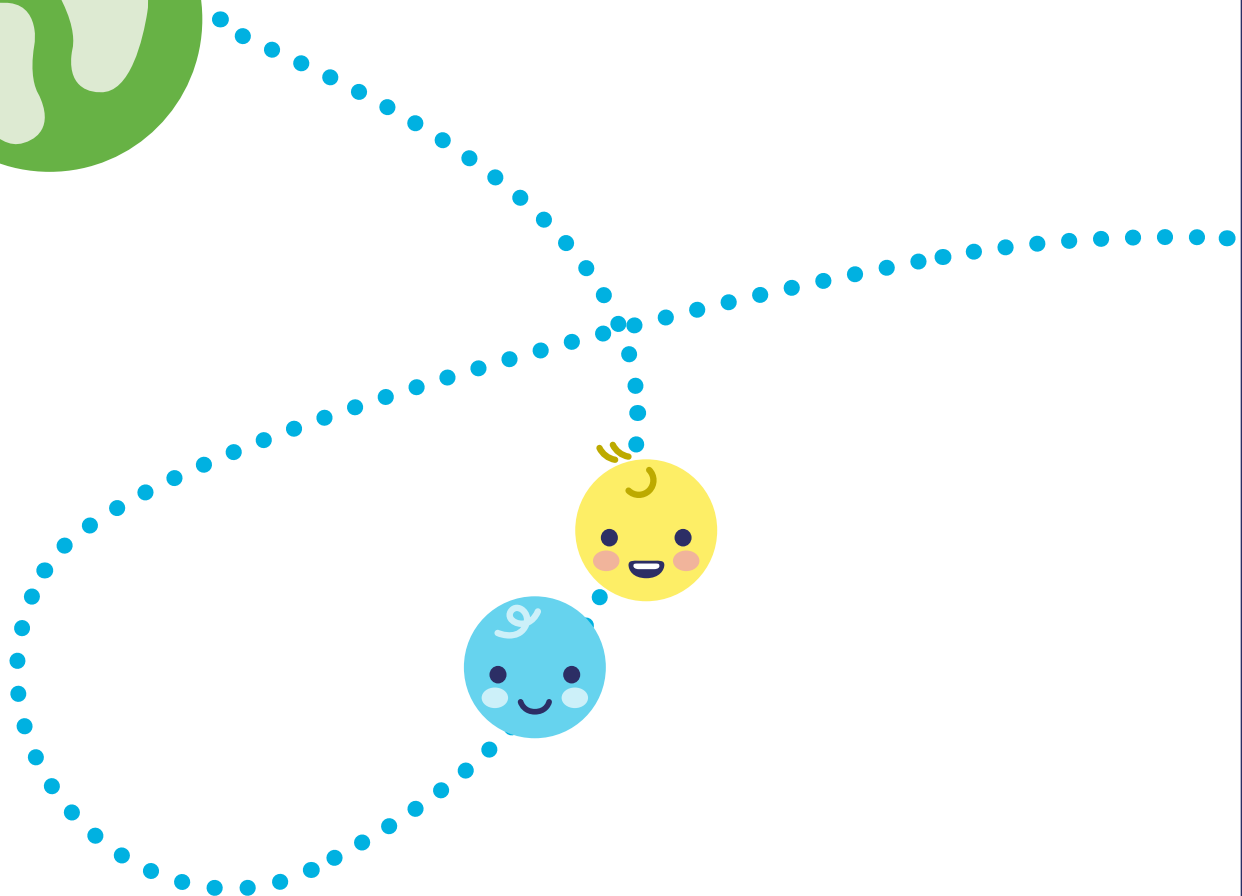


DATA SUMMARY

CHILDREN SERVED IN SCHOOL READINESS

The information on the following pages is based on data collected from July 1, 2021- June 30, 2022.

This chart represents the number of children served in the School Readiness Program by age, priority in which served, and provider type. This chart reflects the average enrollment by month during the year.



2021													
2022													
CATEGORIES	JUL	AUG	SEP	OCT	NOV	DEC	JAN	FEB	MAR	APR	MAY	JUN	MONTHLY AVERAGE
1. Licensed Private Centers	9,549	9,218	8,722	8,754	9,006	9,195	9,314	9,317	9,628	9,798	9,794	9,582	9,323
01 TCA	61	69	62	72	65	61	46	52	66	73	64	58	62
0-2 Years	24	29	27	28	22	19	14	22	23	26	19	16	22
3-5 Years	20	18	15	22	17	17	14	14	20	20	19	22	18
School Age	17	22	20	22	26	25	18	16	23	27	26	20	22
02 At Risk < 9	1,370	1,345	1,309	1,314	1,296	1,263	1,261	1,301	1,311	1,351	1,354	1,350	1,319
0-2 Years	508	543	564	581	574	546	547	563	570	565	570	565	558
3-5 Years	600	476	436	446	448	444	468	495	507	537	555	550	497
School Age	262	326	309	287	274	273	246	243	234	249	229	235	264
03 Econ Disadvantage < SCH Age	5,520	4,903	4,600	4,726	4,857	5,083	5,297	5,293	5,571	5,761	5,794	5,704	5,259
0-2 Years	2,198	2,134	2,084	2,093	2,104	2,163	2,225	2,147	2,219	2,301	2,297	2,334	2,192
3-5 Years	3,321	2,768	2,516	2,633	2,753	2,920	3,072	3,146	3,352	3,460	3,497	3,370	3,067
School Age	1	1	0	0	0	0	0	0	0	0	0	0	0
04 TCC < SCH Age	28	33	45	42	48	41	46	38	37	38	42	44	40
0-2 Years	14	17	23	21	23	21	24	21	19	19	20	21	20
3-5 Years	14	16	22	21	25	20	22	17	18	19	22	23	20
05 At Risk Age 9-12	85	78	68	68	83	87	82	84	95	90	76	93	82
0-2 Years	0	0	0	0	1	1	0	0	0	0	0	0	0
3-5 Years	1	0	0	0	1	1	1	0	0	0	0	0	0
School Age	84	78	68	68	81	85	81	84	95	90	76	93	82
06 Econ Disadvantage - SCH Age	2,472	2,754	2,579	2,479	2,603	2,599	2,522	2,493	2,493	2,427	2,410	2,292	2,510
School Age	2,472	2,754	2,579	2,479	2,603	2,599	2,522	2,493	2,493	2,427	2,410	2,292	2,510
07 TCC SCH Age	13	15	22	15	16	19	21	18	18	21	23	29	19
School Age	13	15	22	15	16	19	21	18	18	21	23	29	19
09 Head Start and VPK	0	21	37	38	38	42	39	38	37	37	30	4	30
3-5 Years	0	21	37	38	38	42	39	38	37	37	30	4	30
08 Special Needs	0	0	0	0	0	0	0	0	0	0	1	8	1
3-5 Years	0	0	0	0	0	0	0	0	0	0	1	8	1
3. Large Family Child Care Home	236	218	213	225	233	243	234	224	234	242	239	237	232
01 TCA	0	0	2	3	1	1	1	1	1	1	1	1	1
0-2 Years	0	0	2	2	0	0	0	0	0	0	0	0	0
3-5 Years	0	0	0	1	1	1	1	1	1	1	1	1	1
02 At Risk < 9	18	19	21	27	28	24	20	23	22	21	16	13	21
0-2 Years	10	12	13	16	16	12	9	11	10	7	6	4	11
3-5 Years	7	5	5	6	6	6	6	8	8	10	6	5	7
School Age	1	2	3	5	6	6	5	4	4	4	4	4	4
03 Econ Disadvantage < SCH Age	180	157	150	159	160	166	164	159	168	182	183	177	167
0-2 Years	87	85	87	91	94	97	89	84	86	96	96	86	90
3-5 Years	93	72	63	68	66	69	75	75	82	86	87	91	77

CATEGORIES	2021						2022						MONTHLY AVERAGE
	JUL	AUG	SEP	OCT	NOV	DEC	JAN	FEB	MAR	APR	MAY	JUN	
04 TCC < SCH Age	0	0	0	0	1	2	1	1	1	1	1	1	1
0-2 Years	0	0	0	0	1	1	1	1	1	1	1	1	1
3-5 Years	0	0	0	0	0	1	0	0	0	0	0	0	0
06 Econ Disadvantage - SCH Age	38	42	40	35	40	47	46	37	39	35	36	43	40
School Age	38	42	40	35	40	47	46	37	39	35	36	43	40
07 TCC SCH Age	0	0	0	0	2	2	2	2	2	2	2	2	1
School Age	0	0	0	0	2	2	2	2	2	2	2	2	1
09 Head Start and VPK	0	0	0	1	1	1	0	1	1	0	0	0	0
3-5 Years	0	0	0	1	1	1	0	1	1	0	0	0	0
4. Licensed Family Child Care Home	596	601	580	572	621	644	615	581	621	644	632	634	612
01 TCA	4	3	3	4	4	10	6	3	6	5	2	8	5
0-2 Years	2	1	2	2	2	2	1	0	2	1	0	2	1
3-5 Years	1	1	0	1	1	4	2	2	3	3	1	4	2
School Age	1	1	1	1	1	4	3	1	1	1	1	2	2
02 At Risk < 9	80	91	81	70	81	78	78	67	81	79	75	80	78
0-2 Years	45	50	44	41	47	43	43	36	44	43	40	46	44
3-5 Years	27	31	25	21	24	24	26	24	26	27	27	26	26
School Age	8	10	12	8	10	11	9	7	11	9	8	8	9
03 Econ Disadvantage < SCH Age	358	319	311	322	343	362	363	346	366	383	390	390	354
0-2 Years	189	192	190	192	208	218	223	203	212	222	221	231	208
3-5 Years	169	127	121	130	135	144	140	143	154	161	169	159	146
04 TCC < SCH Age	2	2	2	2	2	3	3	3	2	1	1	1	2
0-2 Years	2	2	2	2	2	3	3	3	2	1	1	1	2
05 At Risk Age 9-12	6	6	6	6	8	7	7	6	5	7	6	6	6
School Age	6	6	6	6	8	7	7	6	5	7	6	6	6
06 Econ Disadvantage - SCH Age	146	180	176	168	183	184	158	156	161	168	157	148	165
School Age	146	180	176	168	183	184	158	156	161	168	157	148	165
09 Head Start and VPK	0	0	1	0	0	0	0	0	0	1	0	0	0
3-5 Years	0	0	1	0	0	0	0	0	0	1	0	0	0
08 Special Needs	0	0	0	0	0	0	0	0	0	0	1	1	0
3-5 Years	0	0	0	0	0	0	0	0	0	0	1	1	0
7. Public School	425	707	751	807	776	769	843	857	888	882	893	456	755
01 TCA	2	2	1	1	2	5	3	4	4	4	6	4	3
School Age	2	2	1	1	2	5	3	4	4	4	6	4	3
02 At Risk < 9	54	60	64	72	67	66	68	66	61	58	54	24	60
School Age	54	60	64	72	67	66	68	66	61	58	54	24	60
05 At Risk Age 9-12	24	25	21	21	23	24	27	24	21	20	20	12	22
School Age	24	25	21	21	23	24	27	24	21	20	20	12	22

2021													
2022													
CATEGORIES	JUL	AUG	SEP	OCT	NOV	DEC	JAN	FEB	MAR	APR	MAY	JUN	MONTHLY AVERAGE
06 Econ Disadvantage - SCH Age	345	618	657	705	679	669	737	757	796	794	807	415	665
School Age	345	618	657	705	679	669	737	757	796	794	807	415	665
07 TCC SCH Age	0	2	8	8	5	5	8	6	6	6	6	1	5
School Age	0	2	8	8	5	5	8	6	6	6	6	1	5
2. License-Exempt Centers	92	232	247	246	255	231	240	256	272	283	280	84	227
01 TCA	0	3	3	1	1	0	0	0	0	0	0	0	1
0-2 Years	0	2	2	0	0	0	0	0	0	0	0	0	0
School Age	0	1	1	1	1	0	0	0	0	0	0	0	0
02 At Risk < 9	15	36	42	43	42	36	36	34	31	31	30	14	33
0-2 Years	7	9	9	8	8	9	8	6	4	3	4	5	7
3-5 Years	5	4	4	5	5	6	6	7	6	7	6	7	6
School Age	3	23	29	30	29	21	22	21	21	21	20	2	20
03 Econ Disadvantage < SCH Age	55	46	43	42	42	43	41	49	48	54	51	52	47
0-2 Years	23	22	24	21	19	17	16	18	20	22	20	20	20
3-5 Years	32	24	19	21	23	26	25	31	28	32	31	32	27
04 TCC < SCH Age	0	0	0	2	2	2	2	2	2	2	2	2	2
0-2 Years	0	0	0	2	2	2	2	2	2	2	2	2	2
05 At Risk Age 9-12	1	9	10	10	11	11	12	13	12	13	14	0	10
School Age	1	9	10	10	11	11	12	13	12	13	14	0	10
06 Econ Disadvantage - SCH Age	21	138	149	148	157	139	149	158	179	183	183	16	135
School Age	21	138	149	148	157	139	149	158	179	183	183	16	135
6. Private School	7	7	10	12	13	8	12	8	14	16	12	5	10
02 At Risk < 9	0	0	0	1	0	0	0	0	0	0	0	0	0
3-5 Years	0	0	0	1	0	0	0	0	0	0	0	0	0
03 Econ Disadvantage < SCH Age	0	0	0	0	1	1	1	1	2	2	2	0	1
3-5 Years	0	0	0	0	1	1	1	1	2	2	2	0	1
06 Econ Disadvantage - SCH Age	7	7	10	11	12	7	11	7	12	14	10	5	9
School Age	7	7	10	11	12	7	11	7	12	14	10	5	9
Monthly Total	10,905	10,983	10,523	10,616	10,904	11,090	11,258	11,243	11,657	11,865	11,850	10,998	11,158

CHILD DISENROLLMENT

Total number of children disenrolled from Child Care Provider during the year and the reasons for disenrollment.

REASON FOR DISENROLLEMT	NUMBER OF CHILDREN DISENROLLED
Child care provider dismisses child due to child's behavior	49
Child care provider does not meet parent's or guardian's expectations.	33
Child care provider has closed for economic or other business reasons.	50
Child care setting provided too much stimulation for the child.	4
Child deceased.	2
Child has a duplicate record.	2
Child has exceeded the age-limit for services.	35
Child is no longer residing with the guardian who completed the initial application. New paperwork must be completed by new guardian.	40
Child poses safety risk to other children at program.	5
Child was determined eligible for services but never enrolled with a child care provider.	52
Child was enrolled in a program that changed provider types. Only used if new provider ID is assigned in EFS.	1
Client deceased.	4
Client does not show up for redetermination.	111
Client failed to comply with program requirements.	8
Client failed to provide required documentation to maintain eligibility.	38
Client is no longer eligible for services because the family income exceeds the allowable amount for eligibility.	73
Client moved out of the county in which funding is currently provided.	94
Client no longer has a valid purpose for care.	237
Client's contact information is no longer valid and fails to provide updated information by a specified date.	6
Custodian is involved in seasonal work (such as migrant or school district employees) and the child's enrollment is temporarily suspended while custodian is not working.	244
Parent declined Terms and Conditions	23
Parent or guardian lacks resources necessary to keep child in care.	11
Parent/guardian withdrew child from the program.	1746
Physical limitations of child care provider	1
Provider dismissed child for noncompliance with the provider's attendance policy.	488
Provider dropped child from the provider's program.	162
Provider no longer receiving SR or VPK funds due to noncompliance or low performance	66
Provider remains open, but no longer provides VPK or SR services.	34
Referral from referring agency has expired.	178
Referring agency has terminated the referral.	12
Suspected Fraud Case.	32
The enrollment record was updated.	1099
The next authorization period was approved.	33
The program where the child was receiving services changed ownership. The new owner has a new provider record.	16
Transfer from one SR funding source to another (i.e. BG3 to BG8).	63
Transfer to another provider record (even if the second record is owned by the same provider).	82
TOTAL	5134

PROVIDER TYPE

Total number of providers by provider type.

PROVIDER TYPE	TOTAL PROVIDERS	OFFERED SR ONLY	OFFERED VPK ONLY	BOTH
1. Licensed Private Centers	410	96	94	220
2. License-Exempt Centers	35	32	1	2
3. Large Family Child Care Home	51	45	1	5
4. Licensed Family Child Care Home	176	172	2	2
6. Private School	24	2	21	1
7. Public School	164	57	35	72
TOTAL	860	404	154	302



CHILDREN SERVED BY PROVIDER

PROVIDER NAME	ADDRESS	CITY	CHILDREN SERVED		
			UNDUPLICATED TOTAL	SCHOOL READINESS	VPK
3 THREE LETTERS LEARNING CENTER	6710 N ARMENIA AVE	TAMPA	16	16	0
A + LEARNING CENTER	1109 W GRANT ST	PLANT CITY	115	115	0
A + LEARNING CENTER	1109 W GRANT ST	PLANT CITY	101	101	0
A BRIDGE OF LEARNING, CHILD DEVELOPMENT & LEARNING CENTER	3902 CORPOREX PARK DR SUITE 100	TAMPA	60	50	18
A BRIGHTER COMMUNITY, INC.	1613 N MARION ST	TAMPA	27	16	14
A CHILDREN'S KASTLE E.L.C. INC. AT WINTHROP	11297 WINTHROP MAIN ST	RIVERVIEW	17	17	0
A CHILD'S HAVEN PRIVATE PRESCHOOL	1520 BRENTWOOD HILLS BLVD	VALRICO	62	23	41
A CHILD'S WORLD LEARNING ACADEMY II	8474 W HILLSBOROUGH AVE	TAMPA	153	142	19
A CHILD'S WORLD LEARNING ACADEMY, INC.	3223 ALENE ST	TAMPA	237	220	37
A LITTLE KIDS ACADEMY	11105 E US HIGHWAY 92	SEFFNER	120	112	15
A PERFECT START EARLY LRNG CHILDCARE CTR	2005 E 21ST AVE	TAMPA	69	69	0
A READINESS LEARNING ACADEMY INC	489 APOLLO BEACH BLVD	APOLLO BEACH	71	45	29
A TODAY'S CHILD	2150 W. DR. M.L. KING JR. BLVD	TAMPA	89	81	12
A.J.'S ANGELS II	1139 1ST ST NW	RUSKIN	116	101	20
ABRAHANTES, DANIA	4411 W HANNA AVE	TAMPA	3	3	0
ACADEMY FOR LITTLE SCHOLARS	1216 E LINEBAUGH AVE	TAMPA	37	37	0
ACADEMY KIDS LEARNING CENTER	3916 E HILLSBOROUGH AVE	TAMPA	11	0	11
ACADEMY OF ACHIEVERS	536 MAYDELL DR	TAMPA	45	33	13
ACADEMY OF ACTIVE EDUCATION	6716 S MACDILL AVE ATTN M PELAEZ	TAMPA	45	45	0
ACADEMY OF BRANDON	722 LITHIA PINECREST RD	BRANDON	66	59	10
ACADEMY OF MONTESSORI INTERNATIONAL INC	15421 MORRIS BRIDGE RD	THONOTOSASSA	11	0	11
ACADEMY OF TAMPA D/B/A/ THE VILLAGE C.C.C.	1206 E. 124TH STREET	TAMPA	110	110	0
ACADEMY OF TAMPA DBA KIDS CORNER	5511 N. 40TH STREET	TAMPA	160	153	11
ACADEMY OF TAMPA DBA UNIVERSITY CCC	1902 E. 131ST AVENUE	TAMPA	173	173	0
ACADEMY OF TAMPA DBA WEE CARE	1823 E. 142ND AVE.	TAMPA	116	116	0
ACADEMY OF TAMPA INC. D/B/A CHILDREN'S DISCOVERY	13101 N. 23RD STREET	TAMPA	314	291	33
ACADEMY TO SUCCESS	3203 W DE LEON ST	TAMPA	7	7	0
ACHIEVEMENT CENTER	4601 E BUSCH BLVD	TAMPA	196	182	22
ACHIEVEMENT CENTER DALE MABRY	5714 S DALE MABRY HWY	TAMPA	190	184	10
ACOSTA-PALOMINO, AYME	5608 HALIFAX DR	TAMPA	1	1	0
AGA SCHOLARS PRESCHOOL	13901 SHELDON RD	TAMPA	21	1	20

PROVIDER NAME	ADDRESS	CITY	CHILDREN SERVED		
			UNDUPLICATED TOTAL	SCHOOL READINESS	VPK
ALEXIS, MAUREEN V	12305 N TALIAFERRO AVE	TAMPA	3	3	0
ALFONSO ALVAREZ, LIZET	7915 WOODGLEN CIR	TAMPA	4	4	0
ALFORD AND ASHE ACADEMY	7739 GIBSONTON DR	GIBSONTON	71	64	8
ALL 4 KIDS LEARNING CENTER	608 E MORGAN ST	BRANDON	19	16	5
ALL GODS KIDS ACADEMY	6501 N CENTRAL AVE	TAMPA	114	114	0
ALL NATIONS ACADEMY	10022 CHRISTINA DRIVE	RIVERVIEW	21	0	21
ALPHABET LEARNING CENTER INC.	4423 KELLY RD	TAMPA	52	43	13
ALVAREZ VAZQUEZ, JUANA DBA FCCH FANTASIAS	5108 SALEM ST	TAMPA	8	8	0
AMARO IBANEZ, YOLEIVI	1511 W KNOLLWOOD ST	TAMPA	2	2	0
AMARO REYNIER, ADELYN	9122 CAMINO VILLA BLVD	TAMPA	5	5	0
AMAZING EXPLORERS ACADEMY WESTCHASE	8080 COUNTRYWAY BLVD	TAMPA	22	0	22
AMERICAN MONTESSORI PREP SCHOOL LLC	15102 AMBERLY DR	TAMPA	6	0	6
AMERICAN YOUTH ACADEMY	5905 E 130TH AVE	TAMPA	28	0	28
ANDERSON, JENNIFER C.	2434 WISHING WELL CIR	TAMPA	32	32	0
ANDES SMART ACADEMY LLC	19215 LIVINGSTON AVE.	LUTZ	46	26	21
APOLLO BEACH CHRISTIAN PRESCHOOL	6414 GOLF AND SEA BLVD	APOLLO BEACH	55	0	55
APOSTLES LUTHERAN CHURCH PRESCHOOL	200 KINGSWAY RD	BRANDON	7	0	7
ARAGON TORRIJOS, AYSIS	3226 LAS BRISAS DR	RIVERVIEW	4	4	0
ARENAS, FACUNDA U	3901 W OKLAHOMA AVE	TAMPA	13	13	0
ATELONIE, LISA L DBA LOTS OF LOVE FAMILY DAYCARE	4008 1/2 E BIRD ST	TAMPA	1	1	0
AUTUMN LEAF ACADEMY	3007 S. DANIELS ROAD	PLANT CITY	68	52	22
B & G DAY CARE AND KINDERGARTEN INC.	14419 DR MLK BOULEVARD	DOVER	23	18	7
BABY STEPS EARLY STEPS	811 S CASTLE COURT	TAMPA	51	51	0
BACKYARD BEARS DAY SCHOOLS	6602 N HABANA AVE	TAMPA	139	116	36
BAKANANSA FARIDAH DBA AMERICAN HOME CHILD DC LLC	7110 N WHITTIER ST	TAMPA	3	3	0
BALLOON, SAMEESE L. DBA DEVINED LITTLE STEPS	2004 E HAMILTON AVE	TAMPA	10	6	4
BAMBOO BAMBINO LEARNING ACADEMY	914 N CASTLE CT	TAMPA	34	34	0
BARR, RHONDA F DBA NURTURED SPROUTS CC	2117 W KIRBY ST	TAMPA	11	11	0
BARRERO ANDRIA I	2501 KRUEGER LN	TAMPA	8	8	0
BARRIERA JIMENEZ, MARLYN DBA CHILDREN'S TREE HOUSE	7001 ALMENDARIZ WAY	TAMPA	3	3	0
BAY HOPE DAY SCHOOL	17030 LAKESHORE RD	LUTZ	95	0	95
BAYAAN ACADEMY INC	10917 N 56TH ST	TEMPLE TERR	11	0	11
BAYCREST ACADEMY AT BRANDON	202 PAULS DR	BRANDON	94	84	11
BAYCREST ACADEMY CHILD CARE CENTER I	105 W MLK BLVD	TAMPA	140	138	4
BELL SHOALS BAPTIST ACADEMY	2102 BELL SHOALS RD	BRANDON	74	0	74
BELLO-ESTRADA, BELKIS Y.	6021 WILSHIRE DR	TAMPA	11	11	0

PROVIDER NAME	ADDRESS	CITY	CHILDREN SERVED		
			UNDUPLICATED TOTAL	SCHOOL READINESS	VPK
BEST FRIENDS FOR KIDZ LEARNING LABORATORY	408 E LUMSDEN RD	BRANDON	129	109	29
BETHUNE, ANGELENA M	514 9TH STREET NORTHEAST	RUSKIN	6	6	0
BIBLE TRUTH MINISTRIES ACADEMY	4902 N 22ND ST	TAMPA	29	23	11
BIBLE TRUTH MINISTRIES ACADEMY SA	4902 N 22ND ST	TAMPA	9	9	0
BIBLE-BASED FELLOWSHIP CHILD CARE CENTER	8718 N 46TH ST	TEMPLE TERR	95	81	21
BLAIR, MARGARET DIANE	1611 HARTLEY RD	TAMPA	1	1	0
BLANCO RAMOS, CARMEN	3409 W OSBORNE AVE	TAMPA	11	11	0
BLOOMINGDALE ACADEMY	11418 BLOOMINGDALE AVENUE	RIVERVIEW	32	27	11
BLOOMINGDALE CHILDREN'S HOUSE	3920 S KINGS AVE	BRANDON	20	0	20
BOCC DELORIS MCCLOUD HEAD START	2103 N. ROME AVENUE	TAMPA	22	0	22
BOCC GRANT PARK HEAD START	4422 E COLUMBUS DR	TAMPA	7	0	7
BOCC JACKSON SPRINGS HEAD START	7345 JACKSON SPRINGS ROAD	TAMPA	4	0	4
BOCC LA PALOMA HEAD START	3419 N. NEBRASKA	TAMPA	16	0	16
BOCC MANGO HEAD START/EHS	11210 E. BROADWAY AVENUE	SEFFNER	24	0	24
BOCC NORTH TAMPA COMMUNITY HEAD START	14013 N. 22ND AVENUE	TAMPA	26	0	26
BOCC ROBLES PARK HEAD START CENTER	3814 N. CENTRAL AVENUE	TAMPA	18	0	18
BOCC SOUTH COUNTY HEAD START CENTER	215 SE. 14TH AVENUE	RUSKIN	18	0	18
BOCC TOWN AND COUNTRY COMMONS HDST	7606 PAULA DRIVE	TAMPA	22	0	22
BONNEBAL, KATIA DBA KATY'S KID CAVE	6801 MATILDA CT	TAMPA	6	6	0
BONNEBAL, KATIA DBA KATY'S KID CAVE LLC	8333 FOUNTAIN AVE	TAMPA	8	8	0
BRADLEY, ROSALIND (LISA) DBA BRADLEY'S LITTLE ANGEL	3004 LAUREL LN	PLANT CITY	7	7	0
BRIDGES AT WESLEY EARLY LEARNING CENTER	6100 MEMORIAL HIGHWAY	TAMPA	17	0	17
BRIGHT ACHIEVERS PRESCHOOL	1609 E LOUISIANA AVE	TAMPA	48	48	0
BRIGHT ACHIEVERS PRESCHOOL II L.L.C.	8405 N 40TH ST	TAMPA	193	193	0
BRIGHT HORIZONS AT TAMPA GENERAL	25 COLUMBIA DR	TAMPA	12	0	12
BRIGHT HORIZONS CHILDREN'S CENTER, LLC	18002 HUNTERS OAK CT	TAMPA	34	0	34
BRIGHT HORIZONS CHILDREN'S CENTERS- TAMPA PALMS	5171 CYPRESS PRESERVE DR	TAMPA	23	0	23
BRIGHT STARS CHILDCARE & EARLY LEARNING CENTER LLC	325 WEST BUSCH BLVD -	TAMPA	69	69	0
BRIGHT STARS LEARNING ACADEMY	7815 TIDEWATER TRL	TAMPA	52	52	0
BRIGHTER DAYS LLC D/B/A STEPPING STONE	5506 E KIRBY ST	TAMPA	224	212	22
BRIGHTER DAYS-HWY 92	11825 E US HIGHWAY 92	SEFFNER	181	166	24
BRIGHTER DAYS-LAKEWOOD	119 S LAKEWOOD DR	BRANDON	185	168	24
BRIGHTER DAYS-PARSONS	1502 N PARSONS AVE	BRANDON	131	119	16

PROVIDER NAME	ADDRESS	CITY	CHILDREN SERVED		
			UNDUPLICATED TOTAL	SCHOOL READINESS	VPK
BROOKINS, STEPHANIE Y.	4108 E FERN ST	TAMPA	13	13	0
BROOKWOOD ACADEMY	3820 COCONUT PALM DR	TAMPA	36	27	11
BROWN, CYNTHIA E DBA PALM RIVER EARLY CDFCC	1834 CADILLAC CIR	TAMPA	15	15	0
BROWN, KRISTINA E	1502 VALRICO LAKE RD	VALRICO	13	13	0
BRUCE, DESIREE A.	1949 GREGORY DR	TAMPA	2	2	0
BRYANT, VONDALYN G.	1125 W ARCH ST	TAMPA	6	6	0
CABRERA, MARIA J.	6425 AMUNDSON STREET	TAMPA	3	3	0
CAMPBELL, CATHERINE ANN	8610 TUPELO DR	TAMPA	6	6	0
CAMPBELL, LATONYA S.	203 W BOUGAINVILLEA AVE	TAMPA	14	14	0
CARDONA-CAPELLA, KEILA DBA TIME 4 KIDS CHILDCARE LLC	8303 STEAMBOAT LN	TAMPA	1	1	0
CARE BEARS LEARNING ACADEMY LLC	115 MARGARET ST STE A	BRANDON	87	87	0
CARE-A-LOT CHILD CARE CENTER, INC.	4002 W HUMPHREY ST	TAMPA	21	21	0
CARLTON ACADEMY DAY SCHOOL	205 N BRUSH ST	TAMPA	27	0	27
CARR, GWENDOLYN M. DBA INFINITY HOUSE OF LOVE	1806 E 115TH AVE	TAMPA	14	14	0
CARR, TIARA S. DBA LAUGH & PLAY FAMILY CHILDCARE HOME	5030 TERRACE VILLAGE LN	TAMPA	7	7	0
CARRERO, ANA R. DBA SWEET DREAMS F.C.C.	2105 W FLORA ST	TAMPA	7	7	0
CARRILLO, MARIA E.	10909 RIVERVIEW DR	RIVERVIEW	19	13	7
CARRILLO-OCHOA, ANTONIA	310 E 120TH AVE	TAMPA	3	3	0
CARROLLWOOD VILLAGE KIND. & DAY NURSERY INC.	4405 EHRlich RD	TAMPA	19	19	0
CASITA 4 KIDS LEARNING CENTER LLC	7415 DESTIN DR	TAMPA	4	4	0
CASTANO, SANDY	8009 DELL DR	TAMPA	14	14	0
CASTILLO, SANDRA DBA SANDRA'S FAMILY CC INC	8532 BRIAR GROVE CIR	TAMPA	5	5	0
CASTILLO-ALFONSO, MAITE	209 W AZALEA AVE	TAMPA	3	3	0
CASTLES OF IMAGINATION	820 BRYAN RD	BRANDON	63	63	0
CATHERINE'S EARLY LEARNING ACADEMY	11418 BLOOMINGDALE AVE	RIVERVIEW	34	27	10
CATHERINE'S EARLY LEARNING ACADEMY	733 W LUMSDEN RD	BRANDON	30	26	6
CELEBRITY KIDS CLUB DBA PRECIOUS BUNDLE	3314 N NEBRASKA AVE	TAMPA	36	36	0
CENTRAL BAPTIST CHRISTIAN SCHOOL	402 E WINDHORST ROAD	BRANDON	23	0	23
CFM-ROSA VALDEZ CENTER	1802 N ALBANY AVE	TAMPA	58	50	14
CHARLES, MARQUILA J.	1013 E 12TH AVE	TAMPA	2	2	0
CHECA VALDIVIA, WENDY L. DBA SMILE HOME DAY CARE	10515 BLACKMORE DR	TAMPA	4	4	0
CHILDCARE OF BRANDON	730 BRANDON TOWN CENTER DR	BRANDON	105	58	51
CHILDCARE OF BRANDON BIG BEND	6050 BIG BEND ROAD	GIBSONTON	54	0	54
CHILDCARE OF BRANDON BLOOMINGDALE HILLS	10811 BLOOMINGDALE AVE	RIVERVIEW	34	0	34
CHILDCARE OF BRANDON BROADWAY	11002 E BROADWAY AVE	SEFFNER	95	72	26

PROVIDER NAME	ADDRESS	CITY	CHILDREN SERVED		
			UNDUPLICATED TOTAL	SCHOOL READINESS	VPK
CHILDCARE OF BRANDON LITHIA	3105 LITHIA PINECREST RD	VALRICO	62	23	43
CHILDCARE OF BRANDON MISSOURI	10710 MISSOURI AVE	RIVERVIEW	42	0	42
CHILDLIFE PRESCHOOL (LYNN ROAD)	13140 LYNN RD	TAMPA	52	21	31
CHILDLIFE PRESCHOOL (WATERS AVENUE)	11201 W WATERS AVE	TAMPA	29	11	20
CHILDLIFE PRESCHOOL-CARROLLWOOD/CITRUS PARK	13140 LYNN RD	TAMPA	74	46	29
CHILDLIFE PRESCHOOL-COUNTRYWAY/WESTCHASE	11201 W WATERS AVE	TAMPA	52	33	22
CHILDREN FIRST ACADEMY ORG.	9129 MEMORIAL HWY	TAMPA	16	16	0
CHILDREN OF THE WORLD ACADEMY I INC.	6033 MEMORIAL HWY	TAMPA	97	88	18
CHILDREN OF THE WORLD ACADEMY II INC.	8731 JACKSON SPRINGS RD	TAMPA	134	114	27
CHILDREN OF THE WORLD ACADEMY III INC	4901 N HABANA AVE	TAMPA	100	75	32
CHILDREN'S ACADEMY FISHHAWK	10560 BROWNING RD	LITHIA	76	42	42
CHILDREN'S ACADEMY INC.	506 LIMONA RD	BRANDON	122	63	66
CHILDREN'S ARK EARLY LEARNING	950 S MULRENNAN RD	VALRICO	100	71	34
CHILDREN'S LAND OF IMAGINATION ACADEMY	17409 GUNN HWY	ODESSA	75	47	33
CHILDREN'S NEST DAY SCHOOL - 62ND ST	11504 N 62ND ST	TEMPLE TERR	100	73	33
CHILDREN'S NEST DAY SCHOOL - BRYAN	3221 BRYAN RD	BRANDON	110	79	36
CHILDREN'S NEST DAY SCHOOL - DELEON	2601 W DE LEON ST	TAMPA	47	26	23
CHILDREN'S NEST DAY SCHOOL - JACKSON SPRINGS	7345 JACKSON SPRINGS RD	TAMPA	53	41	13
CHILDREN'S NEST DAY SCHOOL - MAPLEDALE	15713 MAPLEDALE DR	TAMPA	65	37	32
CHILDREN'S NEST DAY SCHOOL - MENDONSA	1311 MENDONSA RD	PLANT CITY	122	88	41
CHIPP, CYNTHIA A DBA HEAVENLY ANGELS FAMILY CHILD CARE HOME	1502 HEATHER AVE	TAMPA	18	18	0
CHIRINO, LILLIAM R DBA LILY'S DAYCARE LLC	4544 W FERN ST	TAMPA	13	13	0
CIRCA LRNG CTR/DBA KIDS R KIDS #15	5815 KIDS CROSSING DR	LITHIA	52	5	47
CIRCLE C RANCH ACADEMY	6204 INTERBAY BLVD	TAMPA	97	0	97
CITRUS PARK DAY SCHOOL	11112 HENDERSON RD	TAMPA	126	75	60
CLARK, SHANNON L	8707 N WICK PL	TAMPA	11	11	0
COGIC DEVELOPMENTAL CHILD CARE CENTER, INC. DBA COLLEGE HILL COGIC PRESCHOOL	1002 E. MLK BLVD.	TAMPA	70	62	10
COLLAZO, YIGSYS DBA WORLD OF COLORS	9022 TREE VALLEY CIR	TAMPA	10	10	0
COLLINS, CAROLYN J.	8422 N RIVER DUNE ST	TAMPA	10	10	0
COPELAND, CHEMETRIA Y.	8317 CROTON AVE	TAMPA	7	7	0
COUNTRY WAY VILLAGE CHILD CARE, INC.	8810 W NORFOLK ST	TAMPA	49	49	0
CREATIVE KIDZ LEARNING ACADEMY	6130 FLORENCE ST	GIBSONTON	79	70	16

PROVIDER NAME	ADDRESS	CITY	CHILDREN SERVED		
			UNDUPLICATED TOTAL	SCHOOL READINESS	VPK
CREATIVE LEARNING ACADEMY	5557 W WATERS AVE	TAMPA	111	82	37
CREATIVE WORLD CAUSEWAY	9815 CAUSEWAY BLVD	TAMPA	198	100	105
CREATIVE WORLD FISHHAWK	5525 OSPREY RIDGE DR	LITHIA	62	22	42
CREATIVE WORLD RIVERVIEW	11361 SYMMES RD	RIVERVIEW	93	9	85
CREATIVE WORLD SCHOOL APOLLO BEACH	5931 FROND WAY	APOLLO BEACH	168	94	86
CREATIVE WORLD SCHOOL CROSS CREEK	10693 CROSS CREEK BLVD	TAMPA	59	0	59
CREATIVE WORLD SCHOOL TAMPA PALMS	5365 PRIMROSE LAKE CIR	TAMPA	23	0	23
CROSSROADS BAPTIST CHURCH OF LITHIA INC	10405 S COUNTY ROAD 39	LITHIA	27	23	4
CURBELO, YDELSA	7012 COBBLEWOOD CT	TAMPA	7	7	0
CURRY, DAYNA W	1810 HEATHER AVE	TAMPA	24	24	0
DAVIS, EVELYN A.	1008 E CAYUGA ST	TAMPA	3	3	0
DAVIS, PRECIOUS Y.	1110 FERLITA WAY	TAMPA	9	6	4
DE LA ROSA DE LA ROSA,NELIA	6405 BROOK HOLLOW CT	TAMPA	6	6	0
DE LA ROSA, BARBARA	3407 W KIRBY ST	TAMPA	10	10	0
DE LA ROSA, DIUSMARI	2612 ARMENIA CT	TAMPA	3	3	0
DEAN, ROBIN DBA NANA'S LEARNING POST	3709 CASABA LOOP	VALRICO	6	2	4
DEL VALLE-MORENO, YURITZA DBA MY CARROUSELL FCCH	14502 FARM HILLS PL	TAMPA	14	14	0
DIAZ CABRERA, CARMEN	8706 N PACKWOOD AVE	TAMPA	2	2	0
DIAZ, MARIUSKA DBA DONDE SIEMPRE BRILLA EL SOL LLC	406 W SITKA ST	TAMPA	3	3	0
DIAZ, YUSIMI	13101 N ROME AVE	TAMPA	1	1	0
DIAZ-DELGADO, MIRTHA	4537 W HENRY AVENUE	TAMPA	3	3	0
DIAZ-ESPINOSA, YAIMA	4530 W HIAWATHA ST	TAMPA	5	5	0
DISCOVERY POINT #54	3472 KINGS COMMERCIAL CT	VALRICO	83	41	44
DISCOVERY POINT #70	13011 SUMMERFIELD CROSSING BLVD	RIVERVIEW	60	0	60
DISCOVERY POINT CHILD DEVELOPMENT CENTER #60	11719 SYMMES RD	RIVERVIEW	50	0	50
DISCOVERY POINT DEVELOPMENT CENTER 34	5203 W LUTZ LAKE FERN RD	LUTZ	74	23	54
DISCOVERY WORLD ACADEMY	10602 COUNTY ROAD 672	RIVERVIEW	21	0	21
DOMINION LIFE CHRISTIAN ACADEMY	9390 N FLORIDA AVE	TAMPA	93	87	14
DREAM CHASERS ACADEMY	7415 DESTIN DR	TAMPA	53	47	9
DREAM CHASERS ACADEMY PRESCHOOL AND CHILDCARE	14324 N BOULEVARD	TAMPA	25	25	0
DRUMMER, MAGGIE L.	8323 BAHIA AVE	TAMPA	10	10	0
EARLY SCHOLARS LEARNING ACADEMY	9321 N ARMENIA AVE	TAMPA	45	22	27
EARLY STEPS MONTESSORI ACADEMY	10701 ANDERSON RD	TAMPA	17	0	17
EARTH ANGEL'S LEARNING ACADEMY	9714 N BOULEVARD	TAMPA	130	121	18
EAST TAMPA ACADEMY	4309 N 34TH ST	TAMPA	41	26	20
EASTER SEALS CHILD DEVELOPMENT CENTER	2401 E HENRY AVE	TAMPA	47	47	0

PROVIDER NAME	ADDRESS	CITY	CHILDREN SERVED		
			UNDUPLICATED TOTAL	SCHOOL READINESS	VPK
EBERHART, ANNETTE C DBA KIDD'S R US FCC	1907 E BOUGAINVILLEA AVE	TAMPA	25	25	0
ECHO LEARNING CENTER BILINGUAL	6535 E HILLSBOROUGH AVE	TAMPA	17	17	0
ECHO LEARNING CENTER INC	6535 E HILLSBOROUGH AVE	TAMPA	30	23	8
ECOPIA DAY SCHOOL	23461 COLLIER PKWY	LUTZ	14	0	14
EDUCATED MINDS ACADEMY INC.	10025 W HILLSBOROUGH AVE	TAMPA	88	45	48
ELLIE'S SMALL WORLD LLC	3115 W LAMBRIGHT ST	TAMPA	39	32	9
ELSA KIDS DAYCARE CENTER LLC	6315 W CHELSEA ST	TAMPA	43	30	18
ENGLISH, ZANDRA E.	11456 DUTCH IRIS DR	RIVERVIEW	9	9	0
ENGLISH, ZANDRA E.	7910 ALLAMANDA AVE	TAMPA	5	5	0
ENRIQUEZ GARCIA, YUDITH	8220 DONALDSON DR	TAMPA	3	3	0
ENRIQUEZ-MEDEROS, EVELYN	8219 TANGLEWOOD LANE	TAMPA	2	2	0
ERVIN-ROBINSON, RAMONA	1736 WINDSOR WAY	TAMPA	8	8	0
ESPAILLAT, GUADALUPE G. DBA MORNINGSTAR JOY CC	7805 GARRISON ST	TAMPA	5	5	0
ESPINOSA NASCO, YURELKYS DBA YURELKYS FAMILY CHILD CARE LLC	12701 TROWBRIDGE LN	TAMPA	2	2	0
ESSENTIAL LEARNING ACADEMY INC.	1000 N MACDILL AVE	TAMPA	23	23	0
EVERETT, LASHAN D.	3420 SAND DUNE LN	TAMPA	10	10	0
FAITH CHRISTIAN ACADEMY PRESCHOOL	1202 S COLLINS ST	PLANT CITY	29	21	12
FAITH OUTREACH ACADEMY	7607 SHELDON RD	TAMPA	16	10	7
FAJARDO, TAIMY E DBA HAPPY PLACE CC, LLC	7507 PARADISE PL	TAMPA	12	12	0
FAMILY LEARNING CENTER	4422 COLUMBUS DR.	TAMPA	6	6	0
FAMILY LOVING DAYCARE INC	9912 N MYRTLE ST	TAMPA	60	60	0
FAMILY OF CHRIST LUTHERAN CHILD DEV CTR	16190 BRUCE B DOWNS BLVD	TAMPA	67	0	67
FANTASY ACADEMY	7501 N HIMES AVE	TAMPA	31	31	0
FAT ALBERT'S DAY CARE	4201 E HANNA AVE	TAMPA	30	30	0
FERNANDEZ VAZQUEZ, CRISTINA DBA CRISTI' S LITTLE OWLS LLC	8408 WOODDRIFT DR	TAMPA	3	3	0
FERNANDEZ, ALICIA	6716 W CLIFTON ST	TAMPA	2	2	0
FERNANDEZ-VERNEREO, YUMILA	2308 W ORIENT ST	TAMPA	4	4	0
FERRER, LAIMA	2519 W DIANA ST	TAMPA	2	2	0
FIGUEREDO, MISLEISY	4912 N ARRAWANA AVE	TAMPA	2	2	0
FINLEY, JOYCE ANNE	4116 W GRACE ST	TAMPA	2	2	0
FIRST BAPTIST BRANDON CHRISTIAN ACADEMY	216 N PARSONS AVE	BRANDON	49	0	49
FIRST BAPTIST CHURCH TEMPLE TERRACE WEE WORLD	10002 N 56TH ST	TEMPLE TERR	67	0	67
FIRST BAPTIST LEARNING CENTER	3309 JAMES L. REDMAN PKWY	PLANT CITY	57	0	57
FIRST BAPTIST RUSKIN CHRISTIAN SCHOOL	820 W COLLEGE AVE	RUSKIN	45	0	45
FIRST DISCOVERIES	4302 W EUCLID AVE	TAMPA	17	2	15
FIRST DISCOVERIES ACADEMY	1311 BROOKER RD	BRANDON	23	11	13
FIRST PRESB PRESCHOOL OF BRANDON INC	121 CARVER AVE	BRANDON	20	0	20
FISH HAWK EARLY LEARNING CENTER	5632 OSPREY PARK PL	LITHIA	46	0	46

PROVIDER NAME	ADDRESS	CITY	CHILDREN SERVED		
			UNDUPLICATED TOTAL	SCHOOL READINESS	VPK
FISH HAWK EARLY LEARNING CENTER	5632 OSPREY PARK PL	LITHIA	47	0	47
FISH HAWK EARLY LEARNING CENTER II	6001 PARKSET DR	LITHIA	88	0	88
FISH HAWK EARLY LEARNING CENTER II	6001 PARKSET DR	LITHIA	82	0	82
FISHER, AGNES V.	5454 SMITH RYALS RD	PLANT CITY	3	3	0
FLORES NUNEZ, CLARITZA	8103 RIDEIN RD	TAMPA	3	3	0
FLYNN, LINDA DBA KIDDIE KOLLEGE 4 U, LLC	2236 E 113TH AVE	TAMPA	9	9	0
FORD, ALETA J.	8312 N 13TH ST	TAMPA	18	18	0
FOREST HILLS PRESBYTERIAN LEARNING CTR	709 W LINEBAUGH AVE	TAMPA	58	34	24
FOSTER, THUMBELINA	2712 E 24TH AVE	TAMPA	17	17	0
FOUNDATION CHRISTIAN ACADEMY	3955 LITHIA PINECREST RD	VALRICO	16	0	16
FRANQUI, MARIA C. DBA NANA'S DAYCARE	6414 N GRADY AVE	TAMPA	7	7	0
FREDDIE JEAN LEARNING ACADEMY #3	4215 ORIENT RD	TAMPA	130	130	0
FUTURE ACHIEVERS PRESCHOOL	3905 E REGNAS AVE	TAMPA	63	63	0
FUTURE LEADERS ACHIEVEMENT LLC	5240 E SLIGH AVE	TAMPA	70	70	0
FUTURE LEADERS ACHIEVEMENT LLC II	10030 N 30TH STREET	TAMPA	86	86	0
FUTURE LEADERS ACHIEVEMENT LLC III	6910 KARIN CT	TAMPA	102	102	0
GALILEO MONTESSORI ACADEMY	6620 GUNN HWY	TAMPA	25	9	17
GARCIA GARCÍA, MERKIS DBA BRIGHT FUTURES OF MERKIS	704 BELT CT, TAMPA FL, 33612	TAMPA	3	3	0
GARCIA, RAQUEL DBA LOS ZAPATICOS DE ROSA LLC	3108 W LEROY ST	TAMPA	2	2	0
GOD'S GARDEN PRESCHOOL	3223 GALLAGHER RD	DOVER	35	0	35
GOLDEN RULE CHILD CARE CENTER RULE LANE	104 GOLDEN RULE LN	PLANT CITY	146	146	0
GONZALEZ HERNANDEZ, JERIANNE	8421 WOODHURST DR	TAMPA	3	3	0
GONZALEZ, CARMEN	809 PAPAYA DR	TAMPA	9	9	0
GONZALEZ, JANEY Y	7510 CAROLTON CIR	TAMPA	26	26	0
GONZALEZ, MARTA M	2522 W CORDELIA ST	TAMPA	4	4	0
GONZALEZ-SANJURJO, MABEL	2706 1/2 W LAKE AVE	TAMPA	7	7	0
GOOD SHEPHERD DAY SCHOOL	501 S DALE MABRY HWY	TAMPA	18	0	18
GOODWIN, JOHN JR.	407 W SADIE ST APT B	BRANDON	14	14	0
GORT APONTE, YENELIS DBA FUTURE STARS DAY CARE	2608 W HENRY AVE	TAMPA	2	2	0
GRAHAM, RENEE M.	2009 BALFOUR CIR	TAMPA	10	10	0
GRANT PARK CHRISTIAN ACADEMY	5107 E 32ND AVE	TAMPA	21	3	18
GREAT HOPE PRESCHOOL - LAKE MAGDALENE	1745 W FLETCHER AVE	TAMPA	35	35	0
GREEN HOUSE LEARNING ACADEMY OF TAMPA	4121 W COMANCHE AVE	TAMPA	34	21	16
GREY, KESHA J DBA ALLOMOTHER DAYCARE LLC	8301 STEAMBOAT LN	TAMPA	4	4	0
GUERRA, MICHELLE A	10207 TAKOMAH TRL	TAMPA	8	8	0

PROVIDER NAME	ADDRESS	CITY	CHILDREN SERVED		
			UNDUPLICATED TOTAL	SCHOOL READINESS	VPK
GUIO, MIRIELA	13911 CHERRY BROOK LN	TAMPA	4	4	0
GUZMAN, SHAUNTANE M. DBA LITTLE WONDERS FCC CTR	10923 N LANTANA AVE	TAMPA	3	3	0
HCPS ADAMS MIDDLE	10201 N. BOULEVARD	TAMPA	1	1	0
HCPS ALAFIA ELEM	3535 CULBREATH ROAD	VALRICO	10	0	10
HCPS ALEXANDER ELEM	5602 NORTH LOIS AVENUE	TAMPA	19	8	11
HCPS APOLLO BEACH ELEM	501 APOLLO BEACH BLVD.	APOLLO BEACH	7	7	0
HCPS BAILEY ELEM	4630 GALLAGHER RD.	DOVER	46	15	31
HCPS BALLAST POINT ELEM	2802 BALLAST POINT BLVD.	TAMPA	18	7	11
HCPS BARRINGTON MIDDLE	5925 VILLAGE CENTER DR.	LITHIA	1	1	0
HCPS BAY CREST ELEM	4925 WEBB RD	TAMPA	47	3	44
HCPS BELLAMY ELEM	9720 WILSKY BOULEVARD	TAMPA	56	25	31
HCPS BELMONT ELEM	14150 GATE DANCER RD	SUN CITY CENTER	16	0	16
HCPS BENITO MIDDLE	10101 CROSS CREEK BLVD.	TAMPA	3	3	0
HCPS BING ELEM	6409 36TH AVENUE SOUTH	TAMPA	13	13	0
HCPS BOYETTE SPRINGS ELEM	10141 SEDGEBROOK DRIVE	RIVERVIEW	23	13	10
HCPS BROWARD ELEM	400 WEST OSBORNE AVENUE	TAMPA	29	18	11
HCPS BRYAN ELEM	2006 WEST OAK AVENUE	PLANT CITY	80	45	35
HCPS BRYANT ELEM	13910 NINE EAGLES ROAD	TAMPA	12	2	10
HCPS BUCHANAN MIDDLE	1001 WEST BEARS AVENUE	TAMPA	3	3	0
HCPS BUCKHORN ELEM	2420 BUCKHORN SCHOOL CT.	VALRICO	17	7	10
HCPS BURNETT MIDDLE	1010 NORTH KINGSWAY ROAD	SEFFNER	5	5	0
HCPS BURNEY ELEM	901 S. EVERS STREET	PLANT CITY	13	13	0
HCPS BURNS MIDDLE	615 BROOKER ROAD	BRANDON	6	6	0
HCPS CANNELLA ELEM	10707 NIXON ROAD	TAMPA	50	11	39
HCPS CARROLLWOOD ELEM	3516 MCFARLAND ROAD	TAMPA	9	0	9
HCPS CHIARAMONTE ELEM	6001 SOUTH HIMES AVENUE	TAMPA	23	13	10
HCPS CHILES ELEM	16541 TAMPA PALMS BLVD. W.	TAMPA	11	11	0
HCPS CIMINO ELEM	4329 CULBREATH ROAD	VALRICO	10	0	10
HCPS CITRUS PARK ELEM	7700 GUNN HWY	TAMPA	42	0	42
HCPS CLARK ELEM	19002 WOOD SAGE DRIVE	TAMPA	22	12	10
HCPS CLAYWELL ELEM	4500 NORTHDAL BLVD	TAMPA	49	17	32
HCPS CLEVELAND ELEM	723 EAST HAMILTON AVENUE	TAMPA	5	5	0
HCPS COLLINS ELEM	12424 SUMMERFIELD BLVD.	RIVERVIEW	28	18	10
HCPS COLSON ELEM	1520 LAKEVIEW AVENUE	SEFFNER	39	29	10
HCPS CORK ELEM	3501 N. CORK ROAD	PLANT CITY	24	5	19
HCPS CORR ELEM	13020 KINGS LAKE DRIVE	GIBSONTOWN	43	25	18
HCPS CRESTWOOD ELEM	7824 NORTH MANHATTAN AVE.	TAMPA	36	20	16
HCPS CYPRESS CREEK ELEM	4040 19TH AVENUE NE	RUSKIN	72	38	34
HCPS DAVIDSEN MIDDLE	10501 MONTAGUE STREET	TAMPA	3	3	0
HCPS DAVIS ELEM	10907 MEMORIAL HIGHWAY	TAMPA	24	7	17
HCPS DICKENSON ELEM	4720 KELLY ROAD	TAMPA	13	13	0
HCPS DOBY ELEM	6720 COVINGTON GARDEN DR.	APOLLO BEACH	23	13	10
HCPS DOVER ELEM	3035 NELSON AVENUE	DOVER	31	10	21
HCPS DR CARTER G WOODSON K-8 SCHOOL	8715 N 22ND ST	TAMPA	30	20	10

PROVIDER NAME	ADDRESS	CITY	CHILDREN SERVED		
			UNDUPLICATED TOTAL	SCHOOL READINESS	VPK
HCPS DUNBAR ELEM	1730 UNION STREET	TAMPA	20	20	0
HCPS EDISON ELEM	1607 EAST CURTIS STREET	TAMPA	44	33	11
HCPS EGYPT LAKE ELEM	6707 NORTH GLEN AVENUE	TAMPA	17	17	0
HCPS ESSRIG ELEM	13131 LYNN ROAD	TAMPA	10	0	10
HCPS FERRELL MIDDLE	4302 24TH STREET	TAMPA	2	2	0
HCPS FOLSOM ELEM	9855 HARNEY ROAD	THONOTOSASSA	37	28	9
HCPS FOREST HILLS ELEM	10112 N OLA AVE	TAMPA	11	0	11
HCPS FOSTER ELEM	2014 EAST DIANA STREET	TAMPA	10	0	10
HCPS FRANKLIN MIDDLE	3915 21ST. AVENUE	TAMPA	1	1	0
HCPS FROST ELEM	3950 FAULKENBURG ROAD	RIVERVIEW	29	0	29
HCPS GIBSONTON ELEM	7723 GIBSONTON DRIVE	GIBSONTON	20	6	14
HCPS GIUNTA MIDDLE	4202 SOUTH FALKENBURG RD.	RIVERVIEW	2	2	0
HCPS GRADY ELEM	3910 W. MORRISON AVENUE	TAMPA	10	0	10
HCPS GRAHAM ELEM	2915 MASSACHUSETTS AVENUE	TAMPA	19	19	0
HCPS HAMMOND ELEM	8008 NORTH MOBLEY ROAD	ODESSA	25	16	9
HCPS HERITAGE ELEM	18201 EAST MEADOWS ROAD	TAMPA	38	27	11
HCPS HILL MIDDLE	5200 EHRLICH ROAD	TAMPA	8	8	0
HCPS HUNTER'S GREEN ELEM	9202 HIGHLAND OAK DRIVE	TAMPA	39	19	20
HCPS IPPOLITO ELEM	6874 S FALKENBURG RD	RIVERVIEW	9	0	9
HCPS JACKSON ELEM	502 EAST GILCHRIST ST.	PLANT CITY	13	4	9
HCPS JAMES ELEM	4302 EAST ELLICOTT STREET	TAMPA	12	12	0
HCPS JUST ELEM	1315 SPRUCE STREET	TAMPA	33	33	0
HCPS KENLY ELEM	2909 66TH STREET	TAMPA	37	26	11
HCPS KIMBELL ELEM	8406 NORTH 46TH STREET	TAMPA	45	22	23
HCPS KINGSWOOD ELEM	3102 SOUTH KINGS AVENUE	BRANDON	11	0	11
HCPS KNIGHTS ELEM	4815 NORTH KEENE ROAD	PLANT CITY	27	17	10
HCPS LAKE MAGDALENE ELEM	2002 PINE LAKE DRIVE	TAMPA	32	0	32
HCPS LAMB ELEM	6274 S 78TH STREET	TAMPA	30	20	10
HCPS LANIER ELEM	4704 MONTGOMERY AVENUE	TAMPA	25	10	15
HCPS LEWIS ELEM	6700 EAST WHITEWAY DRIVE	TEMPLE TERRACE	21	10	11
HCPS LIBERTY MIDDLE	17400 COMMERCE PARK BLVD.	TAMPA	3	3	0
HCPS LINCOLN ELEM	1207 EAST RENFRO STREET	PLANT CITY	6	6	0
HCPS LOCKHART ELEM.	3719 NORTH 17TH STREET	TAMPA	23	23	0
HCPS LOMAX ELEM	4207 26TH STREET	TAMPA	30	30	0
HCPS LOPEZ ELEM	200 NORTH KINGSWAY ROAD	SEFFNER	43	21	22
HCPS LOWRY ELEM	11505 COUNTRY HOLLOW DRIVE	TAMPA	33	23	10
HCPS LUTZ ELEM	202 5TH AVENUE SE	LUTZ	36	25	11
HCPS MABRY ELEM	4201 ESTRELLA STREET	TAMPA	10	0	10
HCPS MACFARLANE ELEM	1721 NORTH MACDILL AVENUE	TAMPA	5	5	0
HCPS MANGO ELEM	4220 HWY 579	SEFFNER	13	13	0
HCPS MANISCALCO ELEM	939 DEBUEL ROAD	LUTZ	15	7	8
HCPS MANN MIDDLE	409 EAST JERSEY AVE	BRANDON	2	2	0
HCPS MARTINEZ MIDDLE	5601 LUTZ LAKE FERN ROAD	LUTZ	3	3	0
HCPS MCDONALD ELEM	501 W. PRUETT ROAD	SEFFNER	21	11	10
HCPS MCKITRICK ELEM	5503 LUTZ LAKE FERN ROAD	LUTZ	2	2	0

PROVIDER NAME	ADDRESS	CITY	CHILDREN SERVED		
			UNDUPLICATED TOTAL	SCHOOL READINESS	VPK
HCPS MENDENHALL ELEM	5202 MENDENHALL DRIVE	TAMPA	42	15	27
HCPS MILES ELEM	317 E. 124TH AVENUE	TAMPA	23	15	8
HCPS MINTZ ELEM	1510 HEATHER LAKES BLVD	BRANDON	20	0	20
HCPS MITCHELL ELEM	205 BUNGALOW PARK	TAMPA	47	0	47
HCPS MONROE MIDDLE	4716 MONTGOMERY AVENUE	TAMPA	1	1	0
HCPS MORGAN WOODS ELEM	7001 ARMAND DRIVE	TAMPA	18	0	18
HCPS MORT ELEM	1806 BEARSS AVENUE	TAMPA	35	13	22
HCPS MULLER ELEM	13615 NORTH 22ND STREET	TAMPA	8	8	0
HCPS MULRENNAN MIDDLE	4215 DURANT ROAD	VALRICO	1	1	0
HCPS NELSON ELEM	5413 DURANT ROAD	DOVER	21	0	21
HCPS NORTHWEST ELEM	16438 HUTCHINSON ROAD	TAMPA	13	3	10
HCPS OAK GROVE ELEM	6315 N ARMENIA AVE	TAMPA	20	10	10
HCPS OAK PARK ELEM	2716 NORTH 46TH STREET	TAMPA	13	13	0
HCPS ORANGE GROVE MIDDLE	3415 16TH STREET	TAMPA	6	6	0
HCPS PALM RIVER ELEM	805 MAYDELL DRIVE	TAMPA	23	13	10
HCPS PINECREST ELEM	7950 LITHIA PINECREST RD	LITHIA	11	0	11
HCPS PIZZO ELEM	11701 USF BULL RUN DRIVE	TAMPA	10	0	10
HCPS PLANT CITY HIGH LITTLE SCHOOL	ONE RAIDER PLACE	PLANT CITY	8	0	8
HCPS POTTER ELEM	3224 EAST CAYUGA	TAMPA	103	65	38
HCPS PRIDE ELEM	10310 LION'S DEN DRIVE	TAMPA	58	22	36
HCPS RAMPOLLO DOWNTOWN K-8TH	802 EAST WASHINGTON STREET	TAMPA	20	20	0
HCPS RANDALL MIDDLE	16510 FISHHAWK BOULEVARD	LITHIA	1	1	0
HCPS REDDICK ELEM	325 WEST LAKE DRIVE	WIMAUMA	43	22	21
HCPS RIVERHILLS ELEMENTARY MAGNET SCHOOL	405 RIVERHILLS DRIVE	TEMPLE TERRACE	20	0	20
HCPS RIVERVIEW ELEM	10809 HANNAWAY ROAD	RIVERVIEW	72	28	44
HCPS ROBINSON ELEM	4801 SOUTH TURKEY CREEK RD.	PLANT CITY	27	7	20
HCPS ROBLES ELEM	4405 EAST SLIGH AVENUE	TAMPA	37	37	0
HCPS RODGERS MIDDLE	11910 TUCKER ROAD	RIVERVIEW	2	2	0
HCPS ROLAND PARK ELEM	1510 NORTH MANHATTAN AVE.	TAMPA	15	15	0
HCPS ROOSEVELT ELEM	3205 FERDINAND AVE SOUTH	TAMPA	11	0	11
HCPS RUSKIN ELEM	101 EAST COLLEGE AVENUE	RUSKIN	31	21	10
HCPS SCHMIDT ELEM	1250 WILLIAMS ROAD	BRANDON	33	24	9
HCPS SCHWARZKOPF ELEM	18333 CALUSA TRACE BLVD	LUTZ	21	11	10
HCPS SEFFNER ELEM	109 CACTUS RD	SEFFNER	11	0	11
HCPS SEMINOLE ELEM	6201 CENTRAL AVENUE	TAMPA	36	26	10
HCPS SERGEANT PAUL R SMITH MIDDLE SCHOOL	14303 CITRUS POINTE DRIVE	TAMPA	3	3	0

PROVIDER NAME	ADDRESS	CITY	CHILDREN SERVED		
			UNDUPLICATED TOTAL	SCHOOL READINESS	VPK
HCPS SEFFNER ELEM	109 CACTUS RD	SEFFNER	11	0	11
HCPS SEMINOLE ELEM	6201 CENTRAL AVENUE	TAMPA	36	26	10
HCPS SERGEANT PAUL R SMITH MIDDLE SCHOOL	14303 CITRUS POINTE DRIVE	TAMPA	3	3	0
HCPS SESSUMS ELEM	11525 RAMBLE CREEK DRIVE	RIVERVIEW	9	0	9
HCPS SHAW ELEM	11311 NORTH 15TH STREET	TAMPA	56	18	38
HCPS SHEEHY ELEM	6402 NORTH 40TH STREET	TAMPA	18	18	0
HCPS SHORE ELEM	1908 EAST 2ND AVENUE	TAMPA	52	17	35
HCPS SPRINGHEAD ELEM	3208 NESMITH ROAD	PLANT CITY	8	8	0
HCPS STEWART MIDDLE	1125 SPRUCE STREET	TAMPA	7	7	0
HCPS STOWERS ELEM	13915 BARRINGTON STOWERS DR.	LITHIA	10	0	10
HCPS SUMMERFIELD CROSSINGS ELEM	11050 FAIRWAY MEADOW DRIVE	RIVERVIEW	10	0	10
HCPS SUMMERFIELD ELEM	11990 BIG BEND ROAD	RIVERVIEW	11	0	11
HCPS SUMNER HIGH SCHOOL	10650 COUNTY ROAD 672	RIVERVIEW	3	3	0
HCPS SYMMES ELEM	6280 WATSON ROAD	RIVERVIEW	10	0	10
HCPS TAMPA BAY BLVD ELEM	3111 TAMPA BAY BLVD	TAMPA	17	7	10
HCPS TAMPA HEIGHTS ELEM	305 E COLUMBUS DR	TAMPA	32	32	0
HCPS TAMPA PALMS ELEM	6100 TAMPA PALMS BLVD.	TAMPA	8	0	8
HCPS TEMPLE TERRACE ELEM	124 FLOTTO AVENUE	TEMPLE TERRACE	23	13	10
HCPS THOMPSON ELEM	2020 E. SHELL POINT RD.	RUSKIN	44	34	10
HCPS THONOTOSASSA ELEM	10050 SKEW LEE ROAD	THONOTOSASSA	22	22	0
HCPS TINKER ELEM	8207 TINKER STREET	MACDILL AFB	22	0	22
HCPS TOMLIN MIDDLE	501 NORTH WOODROW WILSON ST.	PLANT CITY	2	2	0
HCPS TOWN AND COUNTRY ELEM	6025 HANLEY RD	TAMPA	17	0	17
HCPS TRAPNELL ELEM	1605 WEST TRAPNELL S	PLANT CITY	17	17	0
HCPS TURKEY CREEK MIDDLE	5005 SOUTH TURKEY CREEK RD.	PLANT CITY	3	3	0
HCPS TURNER-BARTELS K-8	9190 IMPERIAL OAK BOULEVARD	TAMPA	28	18	10
HCPS TWIN LAKES ELEM	8507 N HABANA AVENUE	TAMPA	15	0	15
HCPS VALRICO ELEM	609 SOUTH MILLER ROAD	VALRICO	30	0	30
HCPS WALDEN LAKE ELEM	2800 TURKEY CREEK ROAD	PLANT CITY	35	26	9
HCPS WALKER MIDDLE	8282 NORTH MOBLEY ROAD	ODESSA	2	2	0
HCPS WARREN HOPE DAWSON ELEM	12961 BOGGY CREEK DRIVE	RIVERVIEW	20	0	20
HCPS WASHINGTON ELEM	1407 E. ESTELLE STREET	TAMPA	49	20	29
HCPS WEST SHORE ELEM	7110 SOUTH WEST SHORE BLVD	TAMPA	13	3	10
HCPS WEST TAMPA ELEM	2700 WEST CHERRY STREET	TAMPA	34	25	9
HCPS WILLIAMS MIDDLE	5020 NORTH 47TH STREET	TAMPA	15	15	0
HCPS WILSON ELEM	702 ENGLISH STREET	PLANT CITY	6	6	0
HCPS WILSON MIDDLE	1005 SWANN AVENUE	TAMPA	1	1	0
HCPS WIMAUMA ELEM	5709 HICKMAN	WIMAUMA	16	7	9
HCPS WITTER ELEM	10801 NORTH 22ND STREET	TAMPA	21	12	10
HCPS WOODBRIDGE ELEM	8301 WOODBRIDGE BLVD	TAMPA	25	5	20
HCPS YATES ELEM	301 KINGSWAY ROAD	BRANDON	47	27	20
HCPS YOUNG MIDDLE	1807 E.MARTIN LUTHER KING BLVD	TAMPA	2	2	0

PROVIDER NAME	ADDRESS	CITY	CHILDREN SERVED		
			UNDUPLICATED TOTAL	SCHOOL READINESS	VPK
HEAVEN SENT DAYCARE OF BRANDON, INC.	3003 S KINGS AVE	BRANDON	43	37	12
HEBREW ACADEMY	14908 PENNINGTON RD	TAMPA	16	16	0
HECK, VALDINE T. DBA LITTLE HEARTS HAPPY FEET CC	14009 N 20TH ST	TAMPA	16	11	6
HELPING HAND DAY NURSERY INC. II	6406 N 43RD STREET	TAMPA	70	62	16
HELPING HAND DAY NURSERY IV	12535 TINSLEY CIR	TAMPA	24	22	6
HENDERSON, EUGENIA JONES	4814 S. 87TH STREET	TAMPA	40	40	0
HERE WE GROW LEARNING CENTER	1211 WISHING WELL WAY	TAMPA	97	91	12
HICKMAN, SHEILA L	3611 E CARACAS ST	TAMPA	19	19	0
HIGH 5 INC AT BEVIS	5720 OSPREY RIDGE DR	LITHIA	1	1	0
HIGH 5 INC AT BROOKER	812 DEWOLF RD.	BRANDON	4	4	0
HIGH 5 INC AT KINGSWOOD	3102 S KINGS AVE	BRANDON	5	5	0
HIGH 5 INC AT LITHIA SPRINGS	4332 LYNX PAW TRL	VALRICO	6	6	0
HIGH 5 INC AT MINTZ	1510 HEATHER LAKES BLVD.	BRANDON	19	19	0
HIGH 5 INC.	405 BEVERLY BLVD	BRANDON	58	58	0
HIGH 5 INC. AT SYMMES	6280 WATSON RD	RIVERVIEW	7	7	0
HIGHER CALLING LEARNING ACADEMY	808 E OKALOOSA AVE	TAMPA	43	39	4
HILLEL SCHOOL OF TAMPA, INC. DBA HILLEL ACADEMY	2020 W FLETCHER AVE	TAMPA	14	0	14
HILLSBOROUGH BAPTIST SCHOOL	6021 WILLIAMS RD	SEFFNER	72	58	21
HILLSBOROUGH COMMUNITY COLLEGE YBOR CHILD DEV. CTR	1505 E PALM AVE	TAMPA	28	13	21
HILLSDALE PRESCHOOL & ACADEMY	6201 EHRlich RD	TAMPA	32	0	32
HOLMES, MARIAN	3601 E MOHAWK AVE	TAMPA	29	29	0
HOLY TRINITY LUTHERAN SCHOOL	3712 W EL PRADO BLVD	TAMPA	63	0	63
HOME AWAY FROM HOME LEARNING CENTER 1	3002 S 78TH ST	TAMPA	50	50	0
HUDGINS, SHEILA C	8712 N 39TH ST	TAMPA	1	1	0
HUNDLEY, KENDRA T	6420 GONDOLA DR	RIVERVIEW	12	12	0
INCARNATION CATHOLIC SCHOOL	5111 WEBB RD	TAMPA	33	0	33
INDA, DAYAMI DBA DAYAMI HAPPY GROW LLC	8420 WOODLAKE DR	TAMPA	15	15	0
ISTABA PEACE ACADEMY	7326 E SLIGH AVE	TAMPA	72	24	53
IT'S KIDZ TIME OF RIVERVIEW INC	11329 BIG BEND RD	RIVERVIEW	71	30	46
J.E. BRANHAM CHRISTIAN ACADEMY	912 E. SLIGH AVE.	TAMPA	1	1	0
JACKSON, HARRIETTE D	1623 CARNEGIE CIRCLE	TAMPA	3	3	0
JACKSON, MARIE	1101 S 58TH ST	TAMPA	13	13	0
JACKSON, REBECCA E.	732 S 58TH ST	TAMPA	5	5	0
JAMES, CHARMYNE L. DBA CHARMYNE JAMES FAMILY HOMEDAYCARE	1102 KIRKLAND DR	TAMPA	19	19	0
JEFFERY, AKILA I. DBA LITTLE BLESSINGS HOME DC	733 SAILFISH DR	BRANDON	3	3	0
JEWISH COMMUNITY CENTER OF TAMPA	2710 SOUTH YSABELLA AVE.	TAMPA	19	0	19
JEWISH COMMUNITY CENTER OF TAMPA	13013 COMMUNITY CAMPUS DR	TAMPA	17	0	17

PROVIDER NAME	ADDRESS	CITY	CHILDREN SERVED		
			UNDUPLICATED TOTAL	SCHOOL READINESS	VPK
JIMENEZ ESPONDA,DAISY DBA THE DREAMS FACTORY	6203 N COOLIDGE AVENUE	TAMPA	5	5	0
JIMENEZ JIMENEZ, MARIA ANTONIA DBA LITTLE ANGELS	2817 W MARQUETTE AVE	TAMPA	3	3	0
JIMENEZ PARYLAK, KLAUDIA DBA KINGS TOTALLY KIDS	9601 KINGSBURGH CT	TAMPA	10	10	0
JIMENEZ-ESPONDA, DAISY	2710 W CLUSTER AVE	TAMPA	4	4	0
JOLON, ALISON E	1604 E MULBERRY DR	TAMPA	5	5	0
JONES, JUNE L	3221 N. 47TH STREET	TAMPA	15	11	4
JONES, LATOYA	10220 GEESE TRAIL CIR	SUN CITY CTR	21	21	0
JOYAS DEL FUTURO ACADEMY	7501 N HIMES AVE	TAMPA	71	62	13
JUNCO-CRUZ, BENITA C	8204 PENNYWELL PL	TAMPA	4	4	0
JUST FOR TOTS ACADEMY	4417 N LOIS AVE	TAMPA	98	67	43
KENDRICK, MARY G. DBA FRESH BEGINNINGS AND BEYOND	1909 N 35TH ST	TAMPA	8	8	0
KEYSTONE CHILDREN'S ACADEMY	8643 GUNN HWY	ODESSA	43	21	25
KEYSTONE CHRISTIAN PRESCHOOL	16301 RACE TRACK RD	ODESSA	29	0	29
KID CITY USA PLANT CITY	105 THRASHER RD	PLANT CITY	17	17	0
KID CITY USA RIVERVIEW	11329 BIG BEND RD	RIVERVIEW	31	31	0
KID LIFE PRESCHOOL	1511 S US HIGHWAY 301	TAMPA	97	83	19
KIDDIE ACADEMY OF BLOOMINGDALE	1283 BLOOMINGDALE AVE	VALRICO	112	73	42
KIDDIE ACADEMY OF CARROLLWOOD	15320 CASEY RD	TAMPA	102	67	41
KIDDIE ACADEMY OF WESTCHASE	12101 W HILLSBOROUGH AVE	TAMPA	56	0	56
KIDDIE CAMPUS UNIVERSITY	111 MYRTLE RIDGE RD	LUTZ	174	145	42
KIDDIE COUNTRY	5301 MEMORIAL HWY	TAMPA	16	0	16
KIDDIE KOLLEGE DAY CARE	4319 W FAIR OAKS AVE	TAMPA	16	0	16
KIDS CLUB EARLY LEARNING CENTER LLC	608 N ALEXANDER ST	PLANT CITY	92	83	10
KID'S COMMUNITY COLLEGE	10550 JOHANNA AVE	RIVERVIEW	81	58	31
KID'S COMMUNITY COLLEGE RIVERVIEW SOUTH	10030 MATHOG RD	RIVERVIEW	94	39	61
KID'S COMMUNITY COLLEGE SOUTHEAST	11519 MCMULLEN RD	RIVERVIEW	59	0	59
KIDS CORNER ACADEMY	3401 W COLUMBUS DR	TAMPA	69	53	18
KIDS COVE LEARNING ACADEMY	12010 BALM RIVERVIEW RD	RIVERVIEW	106	88	26
KIDS R KIDS #6 FL	9802 WESTCHASE DR	TAMPA	65	0	65
KIDS R KIDS SOUTHSORE	13151 KINGS LAKE DR	GIBSONTON	100	0	100
KIDS R KIDS WATERSET	6406 COVINGTON GARDEN DR	APOLLO BEACH	108	0	108
KIDS R TOPS	215 KINGSWAY RD	BRANDON	143	116	42
KIDS' RAINBOW LEARNING CENTER	4124 W. WATERS AVENUE	TAMPA	42	40	8
KIDS WORLD 9 LLC	121 W PROSSER DRIVE	PLANT CITY	37	29	9
KIDS ZONE LEARNING CENTER	6432 W LINEBAUGH AVE	TAMPA	71	57	17
KIDZ CARE ACADEMY	4936 NORTHDAL BLVD	TAMPA	15	4	11
KIDZ CLUB ACADEMY LLC	1202 E SHELLPOINT RD	RUSKIN	23	23	0
KIDZ IN PLAY CHILDCARE CENTER 2	4201 E OSBORNE AVE	TAMPA	60	60	0
KINDER CARE LEARNING CENTER #1138	15609 PREMIERE DR	TAMPA	104	94	19

PROVIDER NAME	ADDRESS	CITY	CHILDREN SERVED		
			UNDUPLICATED TOTAL	SCHOOL READINESS	VPK
KINDERCARE LEARNING CENTER #1254	11501 N 53RD ST	TEMPLE TERR	185	173	24
KINDERCARE LEARNING CENTER #1264	1701 W TIMBERLANE DR	PLANT CITY	131	100	45
KINDERCARE LEARNING CENTER #1290	2524 S PARSONS AVE	SEFFNER	125	111	23
KINDERCARE LEARNING CENTER #300887	4250 GUNN HWY	TAMPA	68	59	14
KINDERCARE LEARNING CENTER #342	4934 WEBB RD	TAMPA	129	112	24
KINGDOM KIDS LEARNING CENTER	4922 S 84TH ST	TAMPA	35	29	10
KINGS AVENUE CHRISTIAN SCHOOL	2602 S KINGS AVE	BRANDON	34	34	0
KING'S KIDS CHRISTIAN ACADEMY OF TPA INC	3000 N 34TH ST	TAMPA	47	40	8
KOUASSI, BETTY NICOLAS	808 E OSBORNE AVE	TAMPA	7	7	0
KRESTVIEW KID'S ACADEMY LLC	11425 BALM RIVERVIEW RD	RIVERVIEW	37	19	21
L,G LEARNING EXPRESS LLC	10302 N NEBRASKA AVE	TAMPA	37	37	0
LA PETITE ACADEMY 7405	10025 CRISTINA DR	RIVERVIEW	194	172	35
LA PETITE ACADEMY 7407	15707 MAPLEDALE DR	TAMPA	69	41	34
LA PETITE ACADEMY 7408	7511 PAULA DR	TAMPA	135	115	32
LA PETITE ACADEMY 7409	9005 REGENTS PARK DR	TAMPA	129	106	33
LA PETITE ACADEMY 7410	13502 S VILLAGE DR	TAMPA	62	45	21
LA PETITE ACADEMY BLOOMINGDALE	808 W BLOOMINGDALE AVE	BRANDON	92	82	22
LA PETITE ACADEMY GREENHOLLOW	1011 GREENHOLLOW LN	VALRICO	66	52	22
LA PETITE ACADEMY HUMPHREY	3818 W HUMPHREY ST	TAMPA	100	78	30
LA PETITE ACADEMY WINDHORST	606 E WINDHORST RD	BRANDON	98	80	23
LA ROCA CHRISTIAN ACADEMY	109 APRIL LN	TAMPA	21	21	0
LADYBIRD ACADEMY OF FISHHAWK	16470 HAMMOCK CROSSING DR	LITHIA	47	0	47
LAKA CHILDCARE LLC	4701 N 15TH ST	TAMPA	103	103	0
LAKE MAGDALENE ACADEMY	2011 PINE LAKE DR	TAMPA	24	24	0
LAKE MAGDALENE CHRISTIAN SCHOOL	2902 W FLETCHER AVE	TAMPA	62	0	62
LAND OF LEARNING ACADEMY	8809 W ROBSON ST	TAMPA	179	107	74
LARA-RODRIGUEZ, MARIA R. DBA MARIA'S LEARNING SUCESS LLC	7706 W CLIFTON ST	TAMPA	9	1	8
LAVETI INC. DBA THE GODDARD SCHOOL	14106 SPECTOR RD	LITHIA	41	0	41
LEARN & GROW PRE-SCHOOL CORP.	2501 DURANT RD	VALRICO	8	0	8
LEYVA-MANZANARES, YURINA	8703 SOMERSWORTH PL	TAMPA	2	2	0
LIBERTY CHRISTIAN SCHOOL	2505 W GRANFIELD AVE	PLANT CITY	7	0	7
LIC SUSAN F SCANNON CHRISTIAN LEARNING CENTER	9612 N 26TH ST	TAMPA	18	18	0
LIL EXPLORERS CHRISTIAN ACADEMY INC.	301 E ALSOBROOK ST	PLANT CITY	206	206	0
LIL MUNCHKINS LEARNING CENTER INC	702 S EVERS ST	PLANT CITY	118	118	0
LIL PALS	1010 S 76TH ST	TAMPA	79	67	21
LIL TOTS' LEARNING CENTER LLC	3042 S 78TH ST	TAMPA	73	73	0
LIMONA VILLAGE CHAPEL CHILDREN'S CENTER	408 LIMONA RD	BRANDON	41	0	41

PROVIDER NAME	ADDRESS	CITY	CHILDREN SERVED		
			UNDUPLICATED TOTAL	SCHOOL READINESS	VPK
LINDA'S DAY CARE CENTER	3402 E 32ND AVE	TAMPA	42	42	0
LINDA'S LITTLE PEOPLE, INC.	1406 N WHEELER ST	PLANT CITY	51	51	0
LITHIA LEARNING CENTER D/B/A KIDS R KIDS FL #8	4321 LYNX PAW TRL	VALRICO	47	3	44
LITTLE GIANTS LEARNING ACADEMY NORTH	10891 HACKNEY DR	RIVERVIEW	118	103	20
LITTLE GIANTS LEARNING ACADEMY SOUTH	13250 US 301 S	RIVERVIEW	183	121	75
LITTLE HOUSE KINDER LEARNING CENTER	6333 MEMORIAL HWY	TAMPA	52	38	17
LITTLE LEARNERS ACADEMY OF TAMPA PHASE II	5240 E SLIGH AVE 5240 EAST SLIGH AVENUE	TAMPA	34	34	0
LITTLE STEPS LEARNING ACADEMY	8325 N PACKWOOD AVE	TAMPA	115	110	9
LITTLE TEAM LEARNING ACADEMY	6929 N MANHATTAN AVE	TAMPA	120	107	19
LITTLE TOTS BUILDING BLOCKS ACADEMY	812 MAYDELL DR	TAMPA	80	80	0
LITTLE WONDERS LEARNING CENTER	7916 N HIMES AVE	TAMPA	43	25	22
LIVINGSTON, CECELIA W	3002 N 46TH ST	TAMPA	3	3	0
LOLA'S CHILD CARE	4017 N 34TH ST	TAMPA	67	61	11
LOVE & GLORY LEARNING CENTER INC.	4911 N 42ND STREET	TAMPA	80	76	7
LUIS, MIDIALA V. DBA RAYITO DE SOL	5504 CARROLLWOOD MEADOWS DR	TAMPA	5	5	0
LUTZ LEARNING CENTER INC	621 SUNSET LN	LUTZ	27	0	27
LUTZ MONTESSORI SCHOOL	5604 W LUTZ LAKE FERN RD	LUTZ	21	0	21
LUTZ PRE-PREP	17951 N US HIGHWAY 41	LUTZ	82	0	82
MACHADO-CORREA, ELIZABETH	813 PATBUR AVE	TAMPA	4	4	0
MAGIC KINDER PRESCHOOL	16641 FISHHAWK BLVD	LITHIA	81	56	28
MANIFESTATIONS EARLY CHILDCARE CENTER	3102 E LAKE AVE	TAMPA	151	141	18
MANIFESTATIONS EARLY CHILDCARE CENTER EAST	2709 N 34TH ST	TAMPA	3	3	0
MANN, EILEEN	4203 S COVINA CIR	TAMPA	2	2	0
MARI LEDESMA, MAYELIN DBA SWEETHARTS HOME DAYCARE INC	810 W WHATLEY PL	TAMPA	2	2	0
MARIN SUAREZ, ARASAY	214 TERRACE DR	BRANDON	2	2	0
MARK OF EXCELLENCE ACADEMY, LLC	1905 LENNA AVE	SEFFNER	55	35	21
MARTINEZ, MABEL	2122 W HANNA AVE	TAMPA	3	3	0
MARTIN-SANTOS, IDARME MARIA DBA CAMPANITAS DE	2801 W ROBSON ST	TAMPA	7	7	0
MARY GO ROUND CHILD CARE CENTER, INC.	10810 HANNAWAY DR	RIVERVIEW	37	16	22
MARY GO ROUND SOUTH POINTE	10615 SOUTHERN POINTE BLVD	RIVERVIEW	69	18	53
MARY'S LITTLE LAMB PRESCHOOL INC	7311 N ARMENIA AVE	TAMPA	25	14	12
MAYEA ARTEAGA, YAIMET	907 COOLWOOD PL	BRANDON	9	9	0
MAYNARD, QUEEN E. DBA WHERE'S MY BLANKET	6228 TRAVIS BLVD	TAMPA	5	5	0
MCCALISTER, LISHIA C	8711 RUTH PL	TAMPA	7	7	0
MCCOY, TRINA V	1770 LAKEVIEW VILLAGE DR	BRANDON	11	11	0

PROVIDER NAME	ADDRESS	CITY	CHILDREN SERVED		
			UNDUPLICATED TOTAL	SCHOOL READINESS	VPK
MCDUFFIE, VANESSA N	1814 FLAT BRANCH CT	VALRICO	13	13	0
MCGHIE, VERONICA E (DBA) MELODY MAKERS KIDZ FCCH	1440 FOXBORO DR	BRANDON	5	5	0
MCLEAN, LAVERN ANN-MARIE DBA GENTLE HANDS ACADEMY	10709 CARLOWAY HILLS DR	WIMAUMA	1	1	0
MCMILLAN, ARNEATRA T.	4009 N 27TH ST	TAMPA	4	4	0
MEDEROS-HERNANDEZ, IDAIVI	4528 W CLIFTON ST	TAMPA	2	2	0
MEDINA GARCIA, GEORGINA ADAIMY DBA MIMI'S DAYCARE	1415 W YUKON ST	TAMPA	1	1	0
MENENDEZ, ODALIS LARGE FAMILY CHILD CARE HOME DBA MENENDEZ FAMILY CHILDCARE	7205 BEASLEY RD	TAMPA	4	4	0
MESSIAH LUTHERAN CHURCH PRESCHOOL	14920 HUTCHISON RD	TAMPA	18	0	18
METROPOLITAN MINISTRIES DBA PROMISE LAND	2010 N FLORIDA AVE	TAMPA	238	238	0
MILESTONE ACADEMY	8801 N 78TH ST	TEMPLE TERR	169	156	20
MOFFITT CHILD DEVELOPMENT CENTER OPERATED BY BRIGHT HORIZONS	10950 MCKINLEY DR	TAMPA	19	0	19
MOLEIRO, CARIDAD	7702 WINGING WAY DR	TAMPA	2	2	0
MONTESSORI EARLY LEARNING CENTER	3823 HUDSON LN	TAMPA	35	0	35
MONTESSORI HOUSE DAY SCHOOL - HANLEY	7010 HANLEY RD	TAMPA	5	0	5
MONTGOMERY, ARETRINA T. DBA ARETRINA'S FCCH LLC	5805 34TH AVE S	TAMPA	5	5	0
MORNING GLORY ACADEMY	6001 CHRISTY LN	RIVERVIEW	118	95	33
MORRIS, JUDY J. DBA HAND IN HAND HOME CHILDCARE	4202 GAME DAY CT	TAMPA	23	23	0
MOTHER GOOSE PRESCHOOL	3407 N HABANA AVE	TAMPA	59	59	0
MOUNT CALVARY SEVENTH DAY ADVENTIST SCH	3111 E WILDER AVE	TAMPA	27	27	0
MUNOZ-GUERRA, ADRIANA L.	8913 N BOULEVARD	TAMPA	2	2	0
MURDOCK, JAMESENA	1520 E 26TH AVE	TAMPA	7	7	0
MURPHY, GRETCHEN DBA MURPHY'S CHILD DEVELOPMENT CENTER	1508 E MCBERRY ST	TAMPA	12	12	0
MY LITTLE GIANTS DAY SCHOOL	2828 W KIRBY ST	TAMPA	27	19	10
MY LITTLE GIANTS DAY SCHOOL	6503 N HIMES AVE	TAMPA	25	14	11
NELSIE'S DAY CARE LEARNING CENTER LLC	2708 N BOULEVARD	TAMPA	23	23	0
NEW FRIENDSHIP EDUCATION & CULTURE CTR	3107 E LAKE AVE	TAMPA	36	36	0
NEW HEAVEN LEARNING CENTER	16246 SAGEBRUSH ROAD	TAMPA	19	14	5
NEW HOPE EARLY LEARNING	120 N KNIGHTS AVE	BRANDON	11	0	11
NEW JERUSALEM CHRISTIAN ACADEMY	3101 S KINGSWAY RD	SEFFNER	2	2	0
NEW JERUSALEM CHRISTIAN ACADEMY VPK	3101 S KINGSWAY RD	SEFFNER	21	0	21
NEWTON, CAROLYN D	2519 W WALNUT ST	TAMPA	16	16	0
NEWTON, CAROLYN D.	1318 LARSEN LN	TAMPA	12	12	0

PROVIDER NAME	ADDRESS	CITY	CHILDREN SERVED		
			UNDUPLICATED TOTAL	SCHOOL READINESS	VPK
NEXT GENERATION KIDZ EARLY CDHD LRNG INC	1207 E JUNEAU ST	TAMPA	26	26	0
NEXT GENERATION KIDZ ECL CENTER 2 INC	3211 SANCHEZ ST	TAMPA	51	51	0
NEXT GENERATION KIDZ ECLC 3 INC	6815 E 21ST AVE	TAMPA	61	61	0
NEXT JEN'ERATION KIDS ACADEMY	410 S COLLINS ST	PLANT CITY	61	57	10
NIXON, ESTERZIE N	4116 E 99TH AVE	TAMPA	4	4	0
NORTH TAMPA CHRISTIAN ACADEMY EXPLORERS, INC	5585 E COUNTY LINE RD	WESLEY CHAPEL	46	11	40
NORTHDALE CHRISTIAN ACADEMY	15709 MAPLEDALE BLVD	TAMPA	10	0	10
NUNEZ LOPEZ, ANGELA M. DBA ANGELA M. NUNEZ	6807 MATILDA CT	TAMPA	7	7	0
NUNEZ, MARIA	6025 MORNAY DR	TAMPA	4	4	0
O2B KIDS RIVERVIEW	11616 BOYETTE RD	RIVERVIEW	102	55	53
O2B KIDS SOUTH TAMPA	3202 W GANDY BLVD	TAMPA	65	39	28
O2B KIDS SOUTH WESTSHORE	4302 W EUCLID AVE	TAMPA	5	5	0
OLIVERA-CARABALLOSO, YENICE DBA YENI CHILD CARE	4529 W CLIFTON ST	TAMPA	3	3	0
ORTEGA SANTIESTEBAN, ROSAURA M.	11311 N BOULEVARD	TAMPA	4	4	0
ORTIZ, BEVERLY D	14403 N 18TH ST	TAMPA	8	8	0
PALMA CEIA ACADEMY INC	4230 HENDERSON BLVD	TAMPA	51	42	11
PALMA CEIA UNITED METHODIST DAY SCHOOL	3723 W BAY TO BAY BLVD	TAMPA	26	0	26
PALMER RODRIGUEZ, ISARELIS L.	10704 WINGATE DR	TAMPA	4	4	0
PANDA HUGS ACADEMY LLC	15051 BRUCE B DOWNS BLVD	TAMPA	209	161	62
PARADISE LEARNING CENTER	5605 N LINCOLN AVE	TAMPA	56	44	20
PARADISE LEARNING CENTER II	1205 W. HILLSBOROUGH AVE.	TAMPA	72	63	12
PARADISE LEARNING CENTER III	820 W DR. MLK BLVD	TAMPA	52	44	12
PARADISE LEARNING CENTER IV	8012 N ARMENIA AVE	TAMPA	51	32	22
PARADISE LEARNING CENTER V	6704 N. HIMES AVENUE	TAMPA	111	91	29
PARDUE CC LITHIA LLC DBA THE LEARNING EXPERIENCE	16232 BAYBERRY GLEN DR	LITHIA	57	19	39
PARDUE CC SERVICES LLC DBA THE LEARNING EXPERIENCE	20780 TROUT CREEK DRIVE	TAMPA	85	0	85
PARK A TOT DAY CARE CENTER, INC.	3809 W FIG ST	TAMPA	89	89	0
PEGUERO SANTOS, YINET DBA KIDDIE CITY DAYCARE	5560 PENTAIL CIR	TAMPA	4	4	0
PELAEZ-MACKLEM, LENA MARIA	217 W SENECA AVE	TAMPA	5	0	5
PERDOMO QUESADA, REGLA M. DBA HAPPY PEQUES	8707 WOODVINE CT	TAMPA	12	12	0
PEREZ GOMEZ, YANNERIS DBA YANNERIS PEREZ-GOMEZ DAYCARE LLC	4638 LANDSCAPE DR	TAMPA	5	5	0
PEREZ TORRES, YAIMA DBA LITTLE BUILDERS OF THE FUTURE LLC	7018 W POCAHONTAS AVE	TAMPA	2	2	0
PEREZ-GONZALEZ, ALBERTINA	3105 W ABDELLA ST	TAMPA	4	4	0
PEREZ-LEAL, ANGELA M. DBA ANGELA'S DAY CARE LLC	409 DESIREE DR	BRANDON	7	7	0
PEREZ-VALDES, DAYAMIT M.	8107 BLOSSOM AVE	TAMPA	3	3	0

PROVIDER NAME	ADDRESS	CITY	CHILDREN SERVED		
			UNDUPLICATED TOTAL	SCHOOL READINESS	VPK
PEREZ-VALDES, MARIA E	7007 LAMBRIGHT CT	TAMPA	4	4	0
PINECREST MIRNIA'S ACADEMY	6605 N HALE AVE	TAMPA	93	85	11
PINOCCHIO LEARNING CENTER INC.	3303 W SAINT LOUIS ST	TAMPA	31	20	16
PITSTOP 4 KIDS AFTERSCHOOL PROGRAM, INC.	11207 US HIGHWAY 301 S	RIVERVIEW	74	52	23
PLANT CITY LEARNING CENTER INC	651 E ALEXANDER ST	PLANT CITY	148	148	0
PLATO ACADEMY PRESCHOOL TAMPA	7705 GUNN HWY	TAMPA	19	3	16
PLAY 'N' LEARN CHILDREN'S DEVELOPMENT CT	14706 N BOULEVARD	TAMPA	79	60	23
PLAYTIME LEARNING ACADEMY	4701 EHRlich RD	TAMPA	104	44	62
PLAYWORLD ACADEMY LLC	5002A W LINEBAUGH AVE STE A	TAMPA	51	51	0
PORTER, FRANKIE C DBA FRANKIE'S FCCH INC	1004 YORK CT	BRANDON	17	17	0
POST SUNSHINE RANCH	1350 JOHN MOORE RD	BRANDON	40	5	35
POTRILLE, ADA	7806 FELICE AVE	TAMPA	14	14	0
POUS, ANELEY	6004 W JEAN ST	TAMPA	15	15	0
PRECIOUS GEMS ACADEMY	736 MARTIN LUTHER KING BLVD	SEFFNER	85	76	17
PRECIOUS ONES LEARNING CENTER	5810 N HALE AVE	TAMPA	29	29	0
PRECIOUS PEARLS LEARNING ACADEMY LLC	11412 N CENTRAL AVE	TAMPA	51	51	0
PRIMAVERA PRESCHOOL, INC	12881 BAYOU BRANCH AVE	TAMPA	34	0	34
PRIMROSE SCHOOL OF BLOOMINGDALE	1280 BLOOMINGDALE AVE	VALRICO	43	0	43
PRIMROSE SCHOOL OF CARROLLWOOD	1770 W BEARSS AVE	TAMPA	40	0	40
PRIMROSE SCHOOL OF CROSS CREEK	10301 CROSS CREEK BLVD	TAMPA	53	0	53
PRIMROSE SCHOOL OF LUTZ 2	5001 W LUTZ LAKE FERN RD	LUTZ	41	0	41
PRIMROSE SCHOOL OF SOUTH TAMPA	1700 W KENNEDY BLVD	TAMPA	79	0	79
PRIMROSE SCHOOL OF TAMPA PALMS - 3	5307 PRIMROSE LAKE CIR	TAMPA	57	0	57
PRIMROSE SCHOOL OF WESTCHASE	12051 WHITMARSH LN	TAMPA	57	0	57
PRODIGY EARLY LEARNING AT CREEKSIDE , LLC.	14036 US HIGHWAY 301 S	RIVERVIEW	46	0	46
PROGRESS VILLAGE CHRISTIAN ACADEMY	8616 PROGRESS BLVD	TAMPA	56	36	26
QUINTANA-GARCIA, YANELA	6805 GRAPEVINE CT	TAMPA	7	7	0
R' CLUB EARLY LEARNING ACADEMY TELECOM	12420 TELECOM DR	TEMPLE TERR	33	28	12
RAINBOW KIDS CHILD CARE CENTER	4124 W WATERS AVE	TAMPA	55	53	7
RAINBOW OF KIDS ACADEMY	2708 N CENTRAL AVE	TAMPA	76	71	7
REDDISH, TAMMY D	3010 E 24TH AVE	TAMPA	4	4	0
REINA, MIRIAM DBA KID'S PARADISE	14502 MARKLAND GREENS PL	TAMPA	2	2	0
REYES OSORIO, DALVIS S. DBA ABUELA'S HOUSE CC, LLC	2902 W IDLEWILD AVE	TAMPA	2	2	0
REYES, OLGA M	3708 ARGON DR	TAMPA	11	11	0
RICARDO, MARILIN	6414 N CLARK AVE	TAMPA	6	6	0
RICARDO-NAPOLES, YANIET A. DBA YANI PLAYLAND	4926 EL DORADO DR	TAMPA	7	7	0

PROVIDER NAME	ADDRESS	CITY	CHILDREN SERVED		
			UNDUPLICATED TOTAL	SCHOOL READINESS	VPK
RICHARDSON, SHANNON N. DBA A HEAD START FCCH	4106 EAST OKARA ROAD	TAMPA	8	8	0
ROBINSON, KELENE D.	9309 N 28TH ST	TAMPA	10	10	0
RODRIGUEZ REGALADO, OLGA	6819 N CLEARVIEW AVE	TAMPA	7	7	0
RODRIGUEZ, MARILIN DBA KIDS WONDERLAND	6326 FROST DR	TAMPA	4	4	0
RODRIGUEZ, TAHUMARA	8011 N CLARK AVE	TAMPA	4	4	0
RODRIGUEZ-FERNANDEZ, YOSLAINE	8530 N ASHLEY ST	TAMPA	3	3	0
RODRIGUEZ-LEMES, YUSLEISY DBA PLANET CHILDREN	1423 W MEADOWBROOK AVE	TAMPA	2	2	0
RODRIGUEZ-PADRON, YOSLAYNE C. DBA YOSLAYNE FCCH	2120 W IVY ST	TAMPA	10	10	0
RODRIGUEZ-REGALADO, OLGA	2706 W LAKE AVE	TAMPA	7	7	0
RONDON, TAMARA DBA KIDS FOREVER CHILD CARE	4540 W HENRY AVE	TAMPA	6	6	0
ROSA VALDEZ CENTER AT MORGAN WOODS	7001 ARMAND DR	TAMPA	13	4	11
ROSALES, MADELINE	10206 BONNIE BAY COURT	TAMPA	2	2	0
ROSALES-GOODWIN, MICHELLE C	407 W SADIE ST APT A	BRANDON	10	10	0
ROSE ACADEMY OF ACHIEVERS	4108 E ELLICOTT ST	TAMPA	72	72	0
RUIZ, DIANELIS	6646 COUNTY ROAD 579	SEFFNER	4	4	0
RUSKIN U/M CHURCH DAY CARE CENTER	105 4TH AVE NW	RUSKIN	67	45	31
SAFE AND SOUND LEARNING CENTER LLC	8516 RIDEIN RD	TAMPA	25	22	6
SAFETYLAND DAY NURSERY & KINDERGARTEN	13122 N 15TH ST	TAMPA	183	183	0
SALGUEIRO DOMINGUEZ, BARBARA DBA BABY BLISS DAYCARE	5307 SOUTHWICK DR	TAMPA	2	2	0
SALVADOR CIFUENTES, ODALYS	6914 N OREGON AVE	TAMPA	9	9	0
SANCHEZ AGUIAR, ODALIS	9503 BAYTREE CT	TAMPA	4	4	0
SANCHEZ REDONDO, YOLENNY DBA YOLY HOME DAYCARE LLC	12693 N BOULEVARD	TAMPA	5	5	0
SANCHEZ, JENNIFER DBA JENNIS FCCH LLC	7508 CLEARVIEW DR	TAMPA	4	4	0
SANDRA THOMAS FAMILY ENRICHMENT CENTER INC.	1924 E. COMANCHE AVENUE	TAMPA	52	52	0
SANDY'S LEARNING CENTER	15923 N FLORIDA AVE	LUTZ	47	43	8
SANTIESTEBAN-VIDAL, MARITZA I.	9507 PEMBRIDGE CT	TAMPA	2	2	0
SANTOS GUTIERREZ, KATIANA	2138 W JUNEAU ST	TAMPA	2	2	0
SEBASCO-GONZALEZ, DANAY	9013 HICKORY CIR	TAMPA	1	1	0
SEE SAW JUNCTION LEARNING CENTER	6812 N DIXON AVE	TAMPA	80	80	0
SEE SAW JUNCTION LEARNING CTR II	8720 NORTH 40TH STREET	TAMPA	50	50	0
SEFFNER EARLY CHILDHOOD DEVELOPMENT CENTER	205 E US HIGHWAY 92	SEFFNER	59	52	9
SEKIRIME, SHIRA	4604 SERENA DR	TAMPA	7	7	0
SEMINOLE HEIGHTS UNITED METHODIST PRESCHOOL	509 E HANNA AVE.	TAMPA	20	2	18
SHEPHERD, NICOLE DENISE	311 DOWN PINE DR	SEFFNER	20	20	0

PROVIDER NAME	ADDRESS	CITY	CHILDREN SERVED		
			UNDUPLICATED TOTAL	SCHOOL READINESS	VPK
SHINING STARS PRESCHOOL ACADEMY, INC.	603 E MORGAN ST	BRANDON	49	35	19
SIMMONS CHILD WORLD	107 E CLAY AVENUE	BRANDON	187	179	18
SKY HIGH LEARNING ACADEMY LLC	7912 N ARMENIA AVE	TAMPA	43	43	0
SMART KIDS ACADEMY LLC	3512 W BAKER ST	PLANT CITY	64	56	11
SMART START PRE-PREP	13801 MCCORMICK DR	TAMPA	70	33	41
SMART STEPS LLC	9653 WILSKY BLVD	TAMPA	37	28	13
SMITH, AISHA L	1507 E. DR. MLK JR BLVD.	PLANT CITY	1	1	0
SMITH, AISHA L.	1509 EAST DR. MARTIN LUTHER KING JR. BLVD	PLANT CITY	2	2	0
SMITH, MARKITA M DBA KIDS R IN US	1311 WARRINGTON WAY	TAMPA	15	15	0
SMITH, TIFFANY D. DBA ALPHABET BOULEVARD FCCH	2412 E 19TH AVE	TAMPA	3	3	0
SOTTO-FUENTES, LLILIANA	7511 N CAMERON AVE	TAMPA	4	4	0
SOUTHSHORE MONTESSORI	7006 SAIL VIEW LN	APOLLO BEACH	60	0	60
ST. ANDREWS UNITED METHODIST PRESCHOOL	3315 BRYAN RD	BRANDON	36	0	36
ST. JAMES UNITED METHODIST PRESCHOOL	16202 BRUCE B DOWNS BLVD	TAMPA	80	0	80
ST. JOSEPH CATHOLIC SCHOOL	2200 N GOMEZ AVE	TAMPA	30	0	30
ST. JOSEPH'S CHILD CARE CENTER	3001 W DR MARTIN LUTHER KING JR BLVD	TAMPA	27	9	19
ST. PAUL CATHOLIC PRESCHOOL	12708 N DALE MABRY HWY	TAMPA	38	0	38
ST. PETER CLAVER CATHOLIC SCHOOL	1401 N GOVERNOR ST	TAMPA	15	15	0
ST. TIMOTHY CATHOLIC EARLY CHILDHOOD LEARNING CTR	17512 LAKESHORE RD	LUTZ	39	0	39
STEAM PRESCHOOL ACADEMY AT NETPARK TAMPA BAY	5015 N 56 ST	TAMPA	212	183	44
STEAM PRESCHOOL ACADEMY OF PLANT CITY	1108 GOLDFINCH DR	PLANT CITY	63	54	12
STEP AHEAD ACADEMY	308 E 124TH AVE	TAMPA	136	126	14
STEP ONE SCHOOL, INCORPORATED	11602 HENDERSON RD	TAMPA	25	20	6
STEPS TO MATURITY LEARNING CENTER	9508 N NEBRASKA AVE	TAMPA	130	130	0
STORYBOOK RANCH PRESCHOOL INC.	8401 W LINEBAUGH AVE	TAMPA	20	0	20
STRAWBERRY CREST EARLY CHILDHOOD DEV CENTER INC	3802 GALLAGHER RD	PLANT CITY	54	46	10
SUNCOAST ACADEMY INC.	4207 W SAN MIGUEL ST	TAMPA	27	7	22
SUNCOAST ACADEMY INFANT AND TODDLER CENTER	4210 HENDERSON BLVD	TAMPA	1	1	0
SUNRISE CHILDREN'S SERVICES, INC	1114 W SLIGH AVE	TAMPA	43	39	8
SUNSHINE CHILDREN'S LEARNING CENTER LLC - BAY	3923 W BAY AVE	TAMPA	76	64	18
SUNSHINE CHILDREN'S LEARNING CENTER LLC - KELLY	4405 KELLY ROAD	TAMPA	55	45	11
TAMAYO, IRMA Y	2110 W HERMAN ST	TAMPA	1	1	0
TAMPA BAY ACADEMY	14214 N NEBRASKA AVE	TAMPA	5	5	0
TAMPA BAY ACADEMY VPK	14214 N NEBRASKA AVE	TAMPA	24	0	24
TAMPA BAY CHRISTIAN ACADEMY OF FL. INC	6815 N ROME AVE	TAMPA	66	53	20

PROVIDER NAME	ADDRESS	CITY	CHILDREN SERVED		
			UNDUPLICATED TOTAL	SCHOOL READINESS	VPK
TAMPA COMMUNITY CENTER	1725 E FOWLER AVE	TAMPA	21	14	7
TAMPA DAYCARE CENTER	7402 N 56TH STREET SUITE 200	TAMPA	144	126	23
TAMPA ELITE SPORTS ACADEMY	8001 SHELDON RD	TAMPA	102	88	19
TATE GREENE, SHAKEYBA L. DBA CHILDREN'S GARDEN	4106 N 15TH ST APT A	TAMPA	7	7	0
TAYLOR, CAROL DENISE	10424 STRAWBERRY TETRA DR	RIVERVIEW	15	15	0
TAYLOR, DEBORA DBA KIDDY KORNER FAM CC	1612 E OSBORNE AVE	TAMPA	9	9	0
TAYLOR, ELIZABETH D.	921 E LOTUS AVE	TAMPA	16	16	0
TEMPLE TERRACE PRESBYTERIAN WEEKDAY SCHOOL	420 BULLARD PKWY	TEMPLE TERR	105	60	52
THARPE, EDVENA S	2909 E EMMA ST	TAMPA	6	6	0
THE ACADEMY AT TRUE SANCTUARY OF PRAISE	6528 US HIGHWAY 301 S STE 114	RIVERVIEW	52	47	11
THE BRANDON MONTESSORI SCHOOL AT RIVERHILL	4223 LYNX PAW TRL	VALRICO	34	0	34
THE GODDARD SCHOOL	13401 TAMPA OAKS BLVD	TEMPLE TERR	74	43	36
THE GODDARD SCHOOL BRICK PLACE	14607 BRICK PL	TAMPA	39	0	39
THE GODDARD SCHOOL OF SOUTH TAMPA	2403 W KENNEDY BLVD	TAMPA	11	11	0
THE GROWING TREE ACADEMY	8718 SOUTH MOBLEY RD	TAMPA	64	42	26
THE LEARNING CENTER AT ST. JOHN	4110 N MACDILL AVE	TAMPA	19	9	12
THE LEARNING CENTER AT LAKE CARROLL	12012 NORTH ROME AVE.	TAMPA	39	18	21
THE LEARNING EXPERIENCE AT RIVERCREST	10709 CREST SIDE BLVD	RIVERVIEW	65	0	65
THE LEARNING EXPERIENCE BRANDON	413 E BLOOMINGDALE AVE	BRANDON	132	51	90
THE LEARNING EXPERIENCE RIVERVIEW	3705 S US HIGHWAY 301	RIVERVIEW	83	0	83
THE LEARNING GATE, INC.	16331 HANNA RD	LUTZ	20	0	20
THE LEARNING STATION, LLC	10611 CONE GROVE RD	RIVERVIEW	49	5	46
THE NEST SCHOOL INC.	23461 COLLIER PARKWAY	LUTZ	18	0	18
THE PEACOCK'S PLUME COMPANY	1094 BLOOMINGDALE AVE	VALRICO	101	79	32
THE RIVERVIEW MONTESSORI SCHOOL AT RIVERCREST, LLC	11520 RAMBLE CREEK DR	RIVERVIEW	41	0	41
THE VILLAGE EARLY LEARNING CENTER	3741 CANOGA PARK DR	BRANDON	152	0	152
THOMPSON, NEOMI R. DBA TAMPA BAY'S BRIGHT FUTURE	9216 N 13TH ST	TAMPA	21	21	0
TIME OF WONDER ACADEMY	5130 SUNFOREST DR STE 180	TAMPA	47	33	20
TIMS PRESCHOOL INC.	601 SUNSET LN	LUTZ	53	0	53
TINY FEET LEARNING ACADEMY	7902 W WATERS AVENUE	TAMPA	46	39	12
TOGETHER TIME	15306 CASEY RD	TAMPA	49	45	8
TOP KIDS BILINGUAL PRESCHOOL	6701 S MANHATTAN AVE STE D	TAMPA	78	52	35
TOP KIDS BILINGUAL PRESCHOOL 7 INC.	3805 JOHN MOORE RD	BRANDON	25	25	0
TOP KIDS BILINGUAL PRESCHOOL RIVERVIEW	10530 LAKE ST CHARLES BLVD	RIVERVIEW	141	90	63
TOP KIDS PRESCHOOL 5	202 E BROAD ST	TAMPA	114	103	19

PROVIDER NAME	ADDRESS	CITY	CHILDREN SERVED		
			UNDUPLICATED TOTAL	SCHOOL READINESS	VPK
TORRES, ILEANA DBA ILEANA CHILDCARE INC	8334 W FOREST CIR	TAMPA	11	11	0
TWEETY LEARNING CENTER	2118 N MACDILL AVE	TAMPA	17	10	8
TWO STEPS AHEAD EARLY LEARNING CENTER, LLC	3905 E REGNAS AVE	TAMPA	32	32	0
UMARAN-SOLARES, MAYLEN M. DBA SEA LIFE DAYCARE LLC	8402 CATALINA DR	TAMPA	1	1	0
UNIVERSAL ACADEMY OF FLORIDA	6801 ORIENT ROAD	TAMPA	21	0	21
USAA CHILD DEVELOPMENT CENTER	17200 COMMERCE PARK BLVD	TAMPA	4	0	4
USF PRESCHOOL FOR CREATIVE LEARNING	11811 BULL RUN DRIVE	TAMPA	23	1	22
V.I.P. CHILD CARE INC.	3712 W MCKAY AVE	TAMPA	18	0	18
VALDERA COLLAZO, LIDICE DBA MY HAPPY HOUSE, LLC	7005 FERN CT	TAMPA	7	7	0
VALDES, ZORANGEL	6534 LA MESA CIR	TAMPA	7	7	0
VALDES-FERNANDEZ, NIURKA DBA MY BLUE STAR CORP	3003 W ROBSON ST	TAMPA	8	8	0
VALVERDE, MAGDA	8015 JACKSON SPRINGS RD	TAMPA	8	0	8
VANGUARD KIDS	12660 SYDNEY RD	DOVER	50	41	10
VEITIA CHAVIANO, LIURIS	4932 ROCKLEDGE CIR	TAMPA	4	4	0
VERTICAL KIDS LEARNING CENTER	3820 COCONUT PALM DR	TAMPA	24	24	0
VICTORY LITTLE KNIGHTS ACADEMY LLC	13901 SHELDON ROAD	TAMPA	19	0	19
WALDEN LAKE EARLY LEARNING CENTER	2730 TURKEY CREEK ROAD	PLANT CITY	62	0	62
WALKER, SONYA J	4111 E RICHMERE ST	TAMPA	18	18	0
WALLACE, ANNETTE	5506 RAINWOOD MEADOWS DR.	APOLLO BEACH	1	1	0
WALTON ACADEMY BEFORE & AFTERSCHOOL ENRICHMENT	4817 N FLORIDA AVE	TAMPA	24	24	0
WARD, IVORY A FAMILY CHILD CARE HOME DBA KIDZ 1ST CHOICE DAYCARE LLC	3003 N 43RD ST	TAMPA	15	15	0
WEST TAMPA EARLY LEARNING CENTER LLC	3812 1/2 N ARMENIA AVE	TAMPA	63	63	0
WESTMINSTER ACADEMY PRESCHOOL	402 E LUMSDEN RD	BRANDON	29	0	29
WESTTOWN CHRISTIAN ACADEMY	13521 RACE TRACK RD	TAMPA	47	0	47
WHITEHEAD, RAEYN	1001 MALLEWOOD DR	BRANDON	2	2	0
WILLIAMS, MARILYN L	1511 E. NEW ORLEANS AVENUE	TAMPA	16	16	0
WILLIAMS, PAMELA DIANE	706 E MADISON ST	PLANT CITY	4	4	0
WINDSOR LEARNING ACADEMY	6920 HANLEY RD	TAMPA	36	29	11
WONDER KIDZ ACADEMY II LLC	8018 HANLEY RD	TAMPA	97	82	18
WOODARD, ANGELIC R. DBA SUCCESSFUL HANDS LEARNING CENTER	4916 S 83RD STREET	TAMPA	9	0	9
WORLDS OF IMAGINATION INC	402 N. COLLINS ST.	PLANT CITY	63	23	43
WRIGHT-CASTILLO, SYLVIA ELIZABETH	10713 N SEMINOLE AVE	TAMPA	13	13	0
YANES, ALINA	2708 BELLWOOD DR	BRANDON	8	8	0
YBOR EARLY CHILDHOOD LEARNING CENTER	2003 N 36TH STREET	TAMPA	121	121	0

PROVIDER NAME	ADDRESS	CITY	CHILDREN SERVED		
			UNDUPLICATED TOTAL	SCHOOL READINESS	VPK
YMCA BOB SIERRA YOUTH AND FAMILY CENTER	4015 RAGG RD	TAMPA	7	7	0
YMCA CAMP CRISTINA	9840 BALM RIVERVIEW RD	RIVERVIEW	15	15	0
YMCA NORTHWEST HILLSBOROUGH FAMILY	8950 W WATERS AVE	TAMPA	20	20	0
YMCA SUCCESS AFTERSCHOOL ALAFIA	3535 CULBREATH DR	VALRICO	3	3	0
YMCA SUCCESS AFTERSCHOOL ANDERSON	3910 FAIR OAKS AVE	TAMPA	9	9	0
YMCA SUCCESS AFTERSCHOOL BELMONT ELEMENTARY	14150 GATE DANCER RD.	SUN CITY CENTER	22	22	0
YMCA SUCCESS AFTERSCHOOL CARROLLWOOD	3516 MCFARLAND RD	TAMPA	2	2	0
YMCA SUCCESS AFTERSCHOOL CITRUS PARK	7700 GUNN HIGHWAY	TAMPA	6	6	0
YMCA SUCCESS AFTERSCHOOL ESSRIG	13131 LYNN ROAD	TAMPA	6	6	0
YMCA SUCCESS AFTERSCHOOL FOREST HILLS	10112 OLA AVE	TAMPA	10	10	0
YMCA SUCCESS AFTERSCHOOL FROST	3950 FAULKENBURG ROAD	RIVERVIEW	16	16	0
YMCA SUCCESS AFTERSCHOOL GORRIE	705 WEST DELEON STREET	TAMPA	1	1	0
YMCA SUCCESS AFTERSCHOOL GRADY	3910 MORRISON AVE	TAMPA	1	1	0
YMCA SUCCESS AFTERSCHOOL IPPOLITO	6874 S FALKENBURG ROAD	RIVERVIEW	18	18	0
YMCA SUCCESS AFTERSCHOOL LAKE MAGDALENE	2005 PINE LAKE DR	TAMPA	17	17	0
YMCA SUCCESS AFTERSCHOOL LIMONA	1115 TELFAIR	BRANDON	8	8	0
YMCA SUCCESS AFTERSCHOOL MITCHELL	205 BUNGALOW PARK AVE	TAMPA	5	5	0
YMCA SUCCESS AFTERSCHOOL NELSON	5413 DURANT RD	DOVER	9	9	0
YMCA SUCCESS AFTERSCHOOL PINECREST	7950 LITHIA-PINECREST RD	LITHIA	3	3	0
YMCA SUCCESS AFTERSCHOOL PIZZO/MOSI	11701 BULL RUN	TAMPA	11	11	0
YMCA SUCCESS AFTERSCHOOL RIVERHILLS	405 RIVERHILLS DRIVE	TEMPLE TERRACE	28	28	0
YMCA SUCCESS AFTERSCHOOL ROOSEVELT	3205 FERDINAND AVE	TAMPA	3	3	0
YMCA SUCCESS AFTERSCHOOL SEFFNER	109 CACTUS ROAD	SEFFNER	7	7	0
YMCA SUCCESS AFTERSCHOOL SESSUMS	11525 RAMBLE CREEK DRIVE	RIVERVIEW	6	6	0
YMCA SUCCESS AFTERSCHOOL SUMMERFIELD	11990 BIG BEND RD	RIVERVIEW	5	5	0
YMCA SUCCESS AFTERSCHOOL SUMMERFIELD CROSSINGS	11050 FAIRWAY MEADOW DR	RIVERVIEW	11	11	0
YMCA SUCCESS AFTERSCHOOL TAMPA PALMS	6100 TAMPA PALMS BLVD.	TAMPA	10	10	0
YMCA SUCCESS AFTERSCHOOL TWIN LAKES	8507 N HABANA AVE	TAMPA	6	6	0

PROVIDER NAME	ADDRESS	CITY	CHILDREN SERVED		
			UNDUPLICATED TOTAL	SCHOOL READINESS	VPK
YMCA SUCCESS AFTERSCHOOL WARREN HOPE DAWSON ELEMENTARY	12961 BOGGY CREEK DR	RIVERVIEW	5	5	0

Data is from the EFS Modernization Database as of August 29, 2022. School Readiness counts based on enrollment data. VPK counts based on payment data as of the July 2022 reporting period.



FISCAL SUMMARY



PROGRAM FUNDS

Segregation of funds and other local revenues available to the coalition.

FUND TYPE	AMOUNT
School Readiness (SR) funds	\$66,291,147
SR Local Match funds	\$1,197,591
Voluntary Prekindergarten Education (VPK) Program funds	\$24,926,226
American Rescue Plan (ARP) Act funds	\$14,057,246
Coronavirus Response and Relief Supplemental Appropriations (CRRSA) Act funds	\$21,207,854
Preschool Development Grant (PDG) funds	\$231,464
Other Local Revenues (including in-kind)	\$2,484,634
TOTAL	\$130,104,473

DETAILS OF EXPENDITURES BY FUND SOURCE

Details of expenditures by fund source, including total expenditures for administrative activities, quality activities, nondirect services, and direct services for children.

FUND TYPE	ADMINISTRATIVE ACTIVITIES	QUALITY SERVICES	NON-DIRECT SERVICES	DIRECT SERVICES FOR CHILDREN	TOTAL
SR	\$2,835,169	\$6,908,904	\$3,955,573	\$52,591,501	\$66,291,147
SR Local Match Funders	-	-	-	\$1,197,591	\$1,197,591
ARPA	\$85,663	-	-	\$13,971,583	\$14,057,246
CRRSA	\$373,736	\$2,301,402	-	\$18,532,716	\$21,207,584
VPK	\$748,696	-	-	\$24,173,400	\$24,922,096
PDG	\$10,420	\$216,043	-	-	\$226,463
Other Local Revenues	\$34,279	-	-	\$2,167,797	\$2,202,076
TOTAL	\$4,087,963	\$ 9,426,349	\$ 3,995,573	\$ 112,634,588	\$ 130,104,473

COALITION STAFF AND RELATED EXPENDITURES

Total number of coalition staff and the related expenditures for salaries and benefits.



144 ELCHC STAFF



\$9,579,921
SALARY & BENEFITS



AAKASH PATEL

Board Chair
Elevate, Inc.

DR. SHAWN H. ROBINSON, ESQ.

Board Vice-Chair
Law Office of Shawn H. Robinson, Esq.

DR. STEPHANIE HOLMQUIST JOHNSON, PH.D

President
Holmquist Educational Consultants (HEC, Inc.)

CYNTHIA CHIPP

Private Provider Representative
Elevate, Inc.

AMANDA JAE

Faith-Based Provider Representative
Palma Ceia United Methodist Day School

LEE BOWERS

Board Member
Sunshine Health

TRACYE H. BROWN

Board Member
Hillsborough County Public Schools

DR. LISE FOX

Board Member
Florida Center for Inclusive Communities-
University of South Florida

DR. DAPHNE FUDGE

Board Member
Your1 Resource Training

ADAM GIERY

Board Member
Strategos Group

CARL S. HARNESS

Board Member
Hillsborough County

DIANNE JACOB

Board Member
PNC Bank

DR. JACQUELINE JENKINS

Board Member
Hillsborough County Head Start/Early Head Start

DR. JODI MARSHALL

Board Member
Learning Solutions

GWEN MYERS

Board Member
Hillsborough Board of County Commissioners

ALLISON NGUYEN, MPH, MCHES®

Board Member
Florida Department of Health-
Hillsborough County

KELLEY PARRIS

Board Member
The Children's Board of Hillsborough County

BETH PASEK

Board Member
Department of Children and Families

DUSTIN PORTILLO

Board Member
Workforce Development Partners

MELISSA RABURN

Board Member
Fischbach Land Company

SHEILA RIOS

Board Member
Hillsborough Community College - Ybor

STACIE WARD

Board Member
Vitro Retinal Surgeons, LLC.

MICHELLE ZIEZIULA, MUP

Board Member
CareerSource Tampa Bay





Funded by:



DIVISION OF
Early Learning
LEARN EARLY. LEARN FOR LIFE.