



# EARLY LEARNING

COALITION OF HILLSBOROUGH COUNTY

## 2016-2017 ANNUAL REPORT

---

*The Early Learning Coalition of  
Hillsborough County  
(Coalition #19)*

**ADDRESS**

6800 N. Dale Mabry Highway  
Suite 158  
Tampa, FL 33614

**PHONE**

(813) 515-2340

**FAX**

(813) 435-2299

**WEBSITE**

[www.elchc.org](http://www.elchc.org)



# ELCHC BOARD OF DIRECTORS

## OUR MISSION

To promote school and life success for all young children and their families through quality school readiness services and supports.

**SCOTT D. BARRISH**

Choice Legal, Inc.

**MARIE CARACCIOLA**

Hillsborough County Public Schools

**ANGELA CHOWNING**

Hillsborough County Child Care Licensing

**JILL HAMMOND**

Family of Christ Lutheran Church Child Dev. Ctr.

**LYNNE HILDRETH (SECRETARY)**

Moffit Cancer Center

**DIANNE JACOB**

PNC Bank

**JOSEPH N. MCELROY (TREASURER)**

DEX Imaging

**SANDRA MURMAN**

Hillsborough Board of County Commissioners

**AAKASH PATEL (CHAIR)**

Elevate, Inc.

**DR. SHAWN H. ROBINSON, ESQ., (VICE CHAIR)**

Hillsborough Community College

**TRACYE H. BROWN**

Hillsborough County Public Schools

**LUKE A. BUZARD, CPA, CIA**

TECO Energy

**CARLOS DEL CASTILLO**

Charter Communications

**DR. DAPHNE FUDGE**

Your 1 Resource Training

**MARY HANCOCK**

Mary Go Round Child Care Centers

**DR. DOUGLAS HOLT**

Hillsborough County Health Department

**DR. JACQUELINE JENKINS**

Hillsborough County Head Start/Early Head Start

**JENNIFER KUHN**

Florida Department of Children & Families

**DR. BRIAN MCEWEN**

Champions for Children

**KELLEY PARRIS**

Children's Board of Hillsborough County

**EDWARD PEACHEY**

Career Source Tampa Bay

**LIZ WELCH**

Keller Williams Realty

# TABLE OF CONTENTS

## Evaluation of Direct Enhancement Services

- 04** Comprehensive Consumer Education
- 05** Provider Financial Supports
- 06** Training and Technical Assistance  
Coaching
- 07** Quality Activities for Infant and Toddler Care  
Monitoring
- 08** Inclusion

## Data Summary

- 09** Number of Children Served in School Readiness Program
- 10** Total Number of Children Disenrolled
- 11** Total Number of Providers by Provider Type
- List of School Readiness Providers – Eligibility Revoked
- Total Number of Children Served at Each Provider Facility

## Fiscal Summary

- 12** Segregation of School Readiness Program funds, Voluntary Prekindergarten Education Program funds, Child Care Executive Partnership Program (CCEP) funds, and other local revenue
- 13** Details of Expenditures by Fund Source
- 15** Total Number of Coalition Staff and Related Expenditures for Salaries and Benefits

## Attachments

- 17** Attachment A – List of Trainings by Topic Area
- 24** Attachment B - Number of children served in the school readiness program, by provider type, enumerated by eligibility priority category, reported as the number of children served during the month, the average participation throughout the month, and the number of children served during the month.
- 25** Attachment C - A listing of any school readiness program provider, by type, whose eligibility to deliver the school readiness program is revoked, including a brief description of the state or federal violation that resulted in the revocation.
- 26** Attachment D - Total number of children served in each provider facility.



# EVALUATION OF DIRECT ENHANCEMENT SERVICES

## Comprehensive Consumer Education

Parents who need child care for their children are faced with the challenging task of learning how quality care is defined, locating a program that provides that level of quality, and securing a spot for their child. Parents must also find a place that is convenient, affordable, and aligns with their family's philosophy of care and education for their child. In response, ELCHC's Family Services team has developed a holistic approach to delivering a variety of strategies and resources to support parents seeking the right place for their child.

ELCHC's Family Services Specialists are trained as Child Care Resource and Referral Specialists and offer unbiased information and guidance to families about child care options, information to help families identify quality early learning programs, financial assistance strategies and referrals to other community programs and resources as needed.

ELCHC has four kiosks available in its Family Services Department to ensure families have access to the technology needed to complete the on line School Readiness and/or Voluntary Prekindergarten application process. In addition, the ELCHC has partnered with seven Family Resource Centers (FRC) to ensure families in all areas of Hillsborough County can easily access technology. The Family Services Coordinator provided training to case management staff at seven Family Resource Centers regarding the Online application processes and a local company, Dex Imaging, donated seven scanners which were distributed to the FRCs.

In addition to supporting the School Readiness and Voluntary Prekindergarten application processes,

ELCHC's staff maintains a comprehensive database of child care providers throughout Hillsborough County, including licensed child care centers and family child care homes as well as license-exempt facilities. Family Services Specialists use this data to create customized lists of facilities for families seeking child care. All Child Care Resource and Referral Services are available to families and child care providers free of charge.

During FY16-17 staff:

- Provided 18,150 child care referrals to families
- Responded to over 1,500 Online inquiries related to child care
- Distributed over 3,000 consumer education packets to families visiting eligibility locations
- Distributed 2,000 Quality Child Care Listing booklets to families and case managers to help foster families access high-quality programs that are Gold Seal Accredited and/or participating in Quality Counts (local quality rating improvement system)
- Responded to 37,694 phone calls
- Provided face-to-face service to 10,180 parents at the Dale Mabry Family Services office.

### Provider Financial Supports

The ELC of Hillsborough operates a comprehensive provider QRIS (Quality Recognition and Improvement System) program entitled *Quality Counts for Kids* (QCFK). During the course of this year, revisions were made to QCFK to better reflect standards having the most positive impact on child outcomes: Ambitious Instruction, Supportive Environment, Collaborative Teachers and Effective Leaders. The new name for QCFK is *Quality Counts!*

Providers participating in the QCFK program had access to training, technical assistance and coaching along with grant funds to support their programs' continuous quality improvement efforts. Additional funds were approved by the ELCHC Board for programs achieving a new star level after October 2016. In order to apply for these support dollars, participating programs are required to undergo a formal assessment and validation and then receive an official Quality Star Rating from the Coalition. Based on that validation and quality rating, programs subsequently develop and submit a Quality Action Plan. Upon approval of the action plan, programs submit an application for grant funds along with any required supporting documentation for items to be purchased with grant dollars. Once awarded grant

dollars, programs must submit regular progress reports that are in alignment with their approved Quality Action Plan. For FY16-17, 110 programs received \$305,986.34 in financial supports to aid in improving the quality of their programs.

ELCHC coaching staff continued to provide support for the third year to the 23 teachers in the five coaching pilot programs focused on the implementation of the Creative Curriculum and the use of Teaching Strategies Gold (TSG). Coaching was also provided to an additional 95 teachers (15 centers) and 11 family child care home providers for the second year while 17 new teachers in five centers received coaching for the first time. Three Creative Curriculum for Infants, Toddlers and Twos systems, plus three Creative Curriculum for Preschool systems, were provided to four of the first time coaching sites. The cost of these six sets that were purchased in a previous fiscal year is \$9,894.

Fourteen of the centers and one family child care home participating in coaching also implemented Teaching Strategies GOLD assessments of learning for all enrolled children. The ELCHC paid for the annual cost of maintaining subscriptions for all active (993) and archived (1,100) children.

Subscriptions to *my Teachstone* were purchased for the second year for both teaching staff and administrators from those programs receiving coaching. Those interested in receiving one of the subscriptions to *my Teachstone* were asked to apply for it and if selected, commit to fully implementing it. This is an online subscription service designed to combine CLASS observation data with individualized professional development resources. It enables CLASS observers to enter observation results and coaches to recommend the numerous videos, articles and courses to support quality improvement goals. Fifty (50) subscriptions were purchased for \$5,000.

The Creative Curriculum for Family Child Care Home Providers became available for the first time in April, 2017. Eleven of these new systems were purchased at a cost of \$12,749.

The ELCHC Institute for Early Childhood Professionals (IECP) offers a membership program for \$25 annually. The IECP is a space dedicated to supporting early childhood professionals through a variety of resources, services and events. Member benefits include discounts on consumable materials in the IECP work room used for die cutting, lamination and book making including 20 feet of free lamination per year and a 25% discount on all trainings offered by the ELCHC and its partners. Members can also borrow teacher resource books as well as classroom materials such as prop boxes, manipulatives, block and construction items and children's books. Members and community partners may also use the IECP meeting and training spaces at no cost. There are currently 320 IECP members.

## Training and Technical Assistance

The ELC of Hillsborough continued to partner with the Early Childhood Council of Hillsborough County (ECC), University of South Florida Program Wide Positive Behavior Support, Champions for Children, Hillsborough County Public Schools-School Readiness Program, Hillsborough Community College Early Literacy Matters (ELM), and University of Florida Hillsborough County Extension to offer an extensive variety of trainings. Training information was distributed through the Coalition's training publication entitled The Bulletin. The ELCHC Learning Management System (LMS), which was rolled out in January of 2016, serves as the platform for training registration. Providers create their own account and access the course catalogue through the LMS. Partner agencies have access to their own training coursework information and registrations through the LMS. A total of fifty-one (51) different trainings were offered to 357 unduplicated early childhood practitioners.

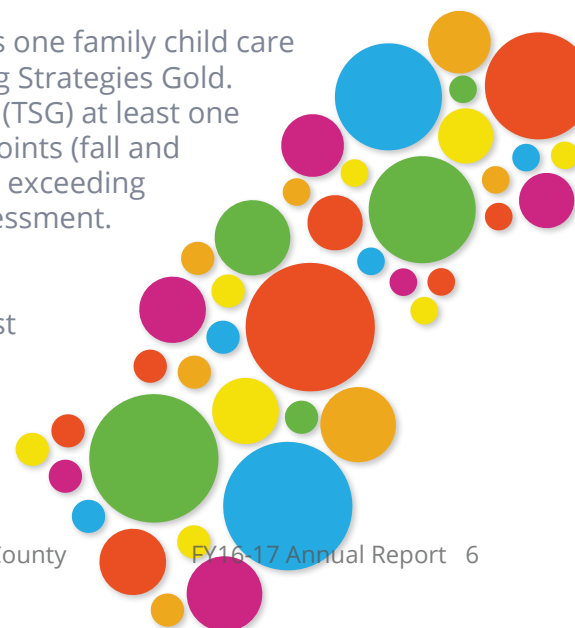
For a complete list and description of trainings offered to school readiness program providers, staff, and parents, see **Attachment A, pages 17 - 23**.

## Coaching

Coalition staff continued to provide coaching for a third year to support the implementation of Creative Curriculum in 121 classrooms serving children birth to 5 in 25 child care centers and 11 family child care homes. A total of 146 practitioners in these programs received coaching to enhance curriculum usage, staff-child interactions and global quality. Applicable pre and post ERS or CLASS Observations were conducted to determine individual teacher growth. Of the 96 post assessments conducted prior to June 30, 2017, 91 (95%) demonstrated growth.

All classrooms in 14 of the centers participating in coaching, as well as one family child care home, received technical assistance in the implementation of Teaching Strategies Gold. 993 children are being served with levels in Teaching Strategies GOLD (TSG) at least one time during this past school year. Of those children, 824 had 2 checkpoints (fall and spring). 690 (84%) of the children with two checkpoints are meeting or exceeding widely held expectations in all six domains at the time of the post assessment.

The Coalition's contractor provided coaching to 164 practitioners with 141 of those showing significant improvement based on a pre and post Environment Rating Scale or Classroom Assessment Scoring System (CLASS).





## Quality Activities for Infants & Toddler Care

Forty-eight of the classrooms in the 25 centers, and six of the family child care homes, receiving coaching by ELCHC staff were infant, toddler or two-year-old classrooms. These practitioners received at least 12 coaching visits over the course of a minimum of six months. Pre and Post ITERS or CLASS observations were conducted to determine individual teacher growth. Teachers completed 12 hours of training in the Creative Curriculum for Infants, Toddlers and Twos and if their program implements Teaching Strategies Gold (TSG) child assessments, they also completed 12 hours of training in TSG. Of the 34 post observations conducted by June 30, 2017, 29 or 85.3% demonstrated growth. The Coalition's contractor provided coaching to 77 infant/toddler practitioners.

Trainings were offered specifically for those working with infants and toddlers:

- Creative Curriculum for Infants, Toddlers and Twos
- Early Childhood Symposium for Infants & Toddlers
- Ready, Set, PLAY
- The Learning Adventure - Planning for Young Children (Infant/Toddler/2)
- Safe Baby Training
- CARA's Kit for Toddlers: Creating Adaptation for Routines and Activities
- Introduction to the Infant Toddler Environment Rating Scale (ITERS-R)

## Monitoring

### School Readiness

ELCHC staff performed desk reviews (Tier I) of the 839 School Readiness Program providers. This monitoring reviewed submission dates of required School Readiness Contract Documents, the date of completion and submission of the annual CCR&R Provider Updates, verification that the provider conducted the required developmental screenings using the Ages & Stages Questionnaire (ASQ) in a timely manner and the accuracy of monthly enrollment and attendance documentation.

In addition, staff monitored a random sample of 141 contracted School Readiness program providers using the Statewide Provider Monitoring Tool for Tier Two compliance.

Also, during FY16-17, the Coalition's sub-recipient's Compliance/Fraud Department reviewed 311 cases

that identified and reported to the Department of Financial Assistance/Division of Public Assistance Fraud approximately \$839,906.05 in potential fraud. The Florida Office of Early Learning received from the Hillsborough County State Attorney's Office, restitution orders for more than \$237,000 based on fraudulent client applications and documents.

### Voluntary Prekindergarten Program

ELCHC Provider Services staff monitored 388 Voluntary Prekindergarten Programs (VPK) to ensure each provider's program met the terms and conditions of the State of Florida Statewide Voluntary Prekindergarten Provider Contract. ELCHC staff monitored each private provider site; Hillsborough County Public Schools (HCPS) conducted the monitoring of all HCPS Voluntary Prekindergarten sites.

## Inclusion

The Early Childhood Council of Hillsborough County (ECC) provides inclusion support services to providers and families in Hillsborough County. The local Warm Line is available to all child care centers and family child care homes as well as parents who request assistance regarding child care arrangements or concerns for their children with special needs. The goals of the Inclusion Initiative at the ELCHC are:

1. To increase the number of providers who offer quality inclusive programs for children with disabilities and special health care needs.
2. To enhance the confidence, ability level, and education of caregivers who care for children with disabilities and special health care needs.
3. To assist providers and the families they serve in understanding and accessing the community resources and services available for children with disabilities and special health care needs.

4. To increase community awareness of the need for, requirements of, and benefits associated with inclusive child care for children with disabilities and special health care needs.
5. ECC Inclusion Services Program offers trainings on a variety of issues, including health, child development, environmental adaptations, curriculum, and laws and regulations. During FY15-16, ECC reports the following activities:

Number of trainings offered\* - 11  
Number of trainings held - 5  
Number of practitioners trained - 48  
Number of Warm Line calls - 101  
Number of children referred for inclusion support Services - 147  
Number of teachers provided with technical assistance - 175

*\*Due to low registration 6 of the trainings were canceled.*







# DATA SUMMARY

The information that follows in this section is based on data collected from July 1, 2016 through June 30, 2017.

**Number of children served in the school readiness program, by provider type, enumerated by eligibility priority category, reported as the number of children served during the month, the average participation throughout the month, and the number of children served during the month.**

Below is a table illustrating a summary of the above information. Detailed information can be found in **Attachment B, page 24.**

Billing Group Category	Licensed Private Centers	Licensed Exempt Centers	Licensed Large FCCH	Licensed FCCH	Public Schools
TCA (TANF-Cash Assistance)	294	5	4	20	30
At-Risk < Age 9	2,072	32	35	157	142
Econ Disadvantage<SCH Age	3,338	19	109	393	26
Transitional Child Care < SCH Age	323	6	5	46	3
At Risk Age 9-12	60	11	1	8	24
Econ Disadvantage - SCH Age	1,852	83	29	164	575
Transitional Child Care SCH Age	123	9	5	15	42
Head Start and VPK	5	-	-	3	-
Child Care Purchasing Pool (CCEP)	904	22	29	122	157
<b>Total</b>	<b>8,519</b>	<b>173</b>	<b>195</b>	<b>866</b>	<b>907</b>

**Total number of children disenrolled during the year and reasons for disenrollment.**

During FY16-17 a total of 5,935 children were disenrolled. The total number of children disenrolled by reason are listed below.

Reason for Disenrollment	Number of Children Disenrolled
Child care provider has closed for economic or other business reasons.	10
Child completed the VPK program that he/she was attending or child completed the full 540/300 hours, whichever comes first.	1
Child deceased.	2
Child has a duplicate record.	1
Child has exceeded the age-limit for services.	33
Child is no longer residing with the guardian who completed the initial application. New paperwork must be completed by new guardian.	32
Child was enrolled in a program that changed provider types. Only used if new provider ID is assigned in EFS.	8
Client does not show up for redetermination.	1,085
Client failed to comply with program requirements.	277
Client failed to provide required documentation to maintain eligibility.	9
Client is no longer eligible for services because the family income exceeds the allowable amount for eligibility.	137
Client moved out of the county in which funding is currently provided.	87
Client no longer has a valid purpose for care.	28
Custodian is involved in seasonal work (such as migrant or school district employees) and the child's enrollment is temporarily suspended while custodian is not working.	369
Parent/guardian withdrew child from the program.	206
Physical limitations of child care provider.	1
Provider dropped child from the provider's program.	2,047
Provider is under investigation for suspected fraud.	76
Provider no longer receiving SR or VPK funds due to noncompliance or low performance.	55
Provider remains open, but no longer provides VPK or SR services.	45
Referral from referring agency has expired.	812
Referring agency has terminated the referral.	583
The program where the child was receiving services changed ownership. The new owner has a new provider record.	13
Transfer to another provider record (even if the second record is owned by the same provider).	18
<b>Total</b>	<b>5,935</b>

*Data is from the Consolidated Database as of June 2017*

## Total number of providers by provider type.

Provider Type	Total Providers	Offered SR Only	Offered VPK Only	Both
1. Licensed Private Centers	439	81	100	258
2. License-Exempt Centers	41	34	5	2
3. Large Family Child Care Home	47	40	1	6
4. Licensed Family Child Care Home	272	268	0	4
7. Public School	228	141	87	0

Data is from the Consolidated Database as of June 2017

## A listing of any school readiness program provider, by type, whose eligibility to deliver the school readiness program is revoked, including a brief description of the state or federal violation that resulted in the revocation.

The Early Learning Coalition of Hillsborough County had 6 school readiness programs whose eligibility to deliver the school readiness program was revoked during FY16-17. **Attachment C, page 25** lists those providers and information regarding the revocation.

## Total number of children served in each provider facility.

The Early Learning Coalition of Hillsborough County has 1,026 early childhood programs that served 35,762 children in FY16-17. For a complete list of the total number of children served at each provider facility, see **Attachment D, pages 26 - 43**.



# EARLY LEARNING

COALITION OF HILLSBOROUGH COUNTY





# FISCAL SUMMARY

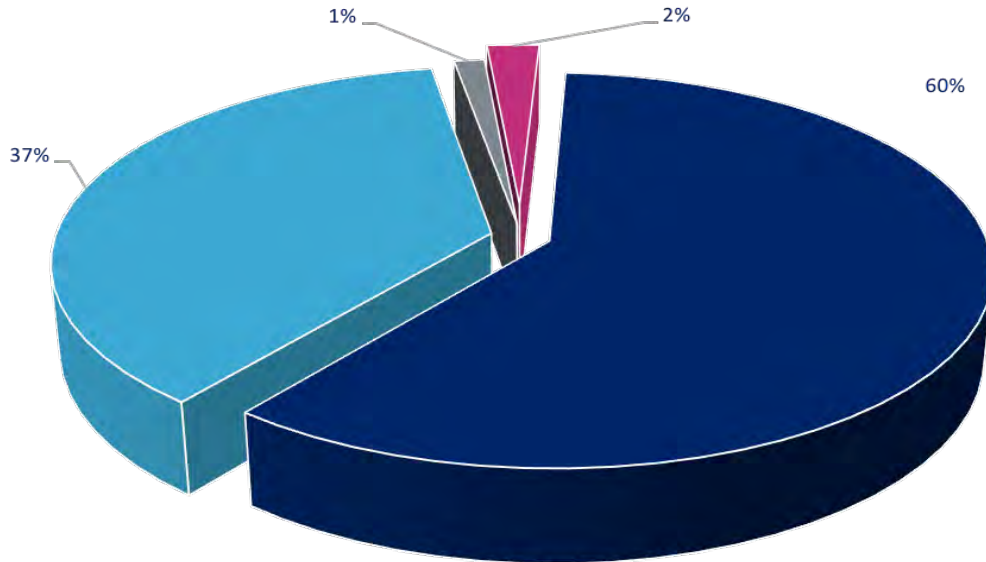
**Segregation of School Readiness Program funds, Voluntary Prekindergarten Education Program funds, Child Care Executive Partnership Program funds and other revenues available to the coalition.**

During FY16-17 the Coalition’s total operating budget was **\$76,505,717**. The table below illustrates the budget by program. The chart on the following page illustrates percentage of budget.

PROGRAM FUNDS	AMOUNT
School Readiness Funds	\$45,323,467
Voluntary Prekindergarten Education Program Funds	\$28,480,247
Child Care Executive Partnership Program funds	\$983,579
Other Local Revenues	\$1,718,425
<b>Total</b>	<b>\$76,505,717</b>



## PROGRAM FUNDS



- School Readiness Funds
- Voluntary Prekindergarten Education Program Funds
- Child Care Executive Partnership Program funds
- Other Local Revenues

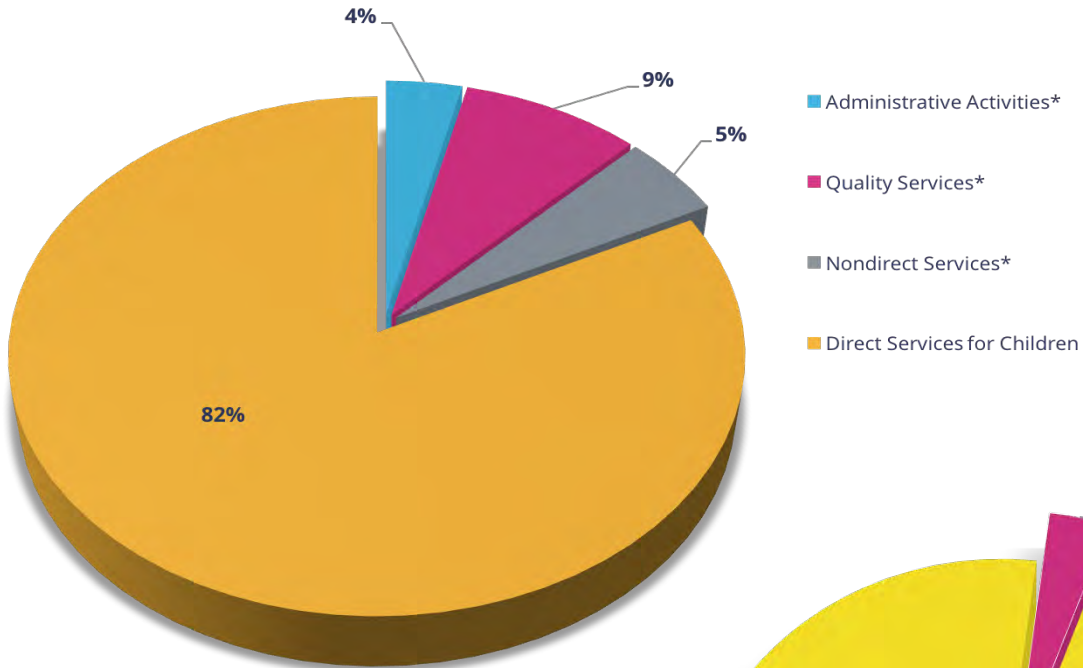
### Details of expenditures by fund source, including total expenditures for administrative activities, quality activities, non-direct services, and direct services for children.

	SCHOOL READINESS	VPK	CCEP	OTHER LOCAL REVENUES	TOTAL
Administrative Activities*	\$1,660,665	\$986,593	___	\$73,308	\$2,720,566
Quality Services*	\$3,933,168	___	___	\$1,645,117	\$5,578,285
Non-direct Services*	\$2,335,702	___	___	___	\$2,335,702
Direct Services for Children	\$37,393,932	\$27,493,654	\$983,579	___	\$65,871,164
<b>Total</b>	<b>\$45,323,467</b>	<b>\$28,480,247</b>	<b>\$983,579</b>	<b>\$1,718,425</b>	<b>\$76,505,717</b>

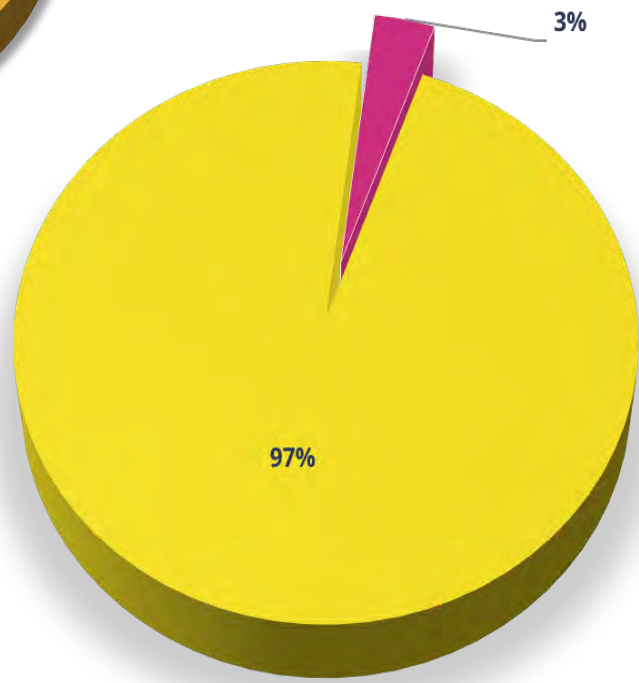
\* Expenditures include Coalition and subcontractor costs



## SCHOOL READINESS

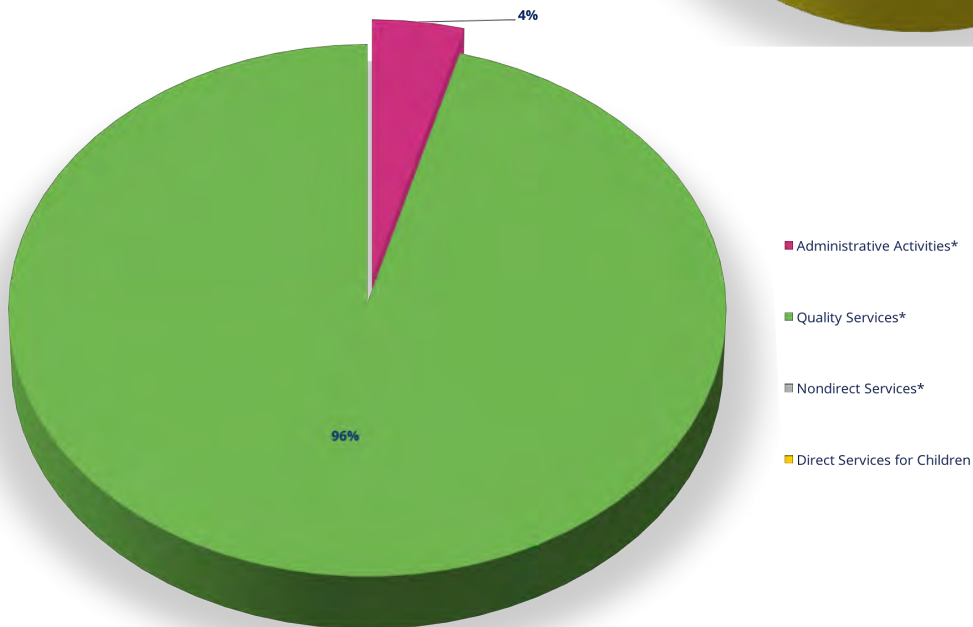


**VPK**



- Administrative Activities\*
- Quality Services\*
- Nondirect Services\*
- Direct Services for Children

## OTHER LOCAL REVENUES

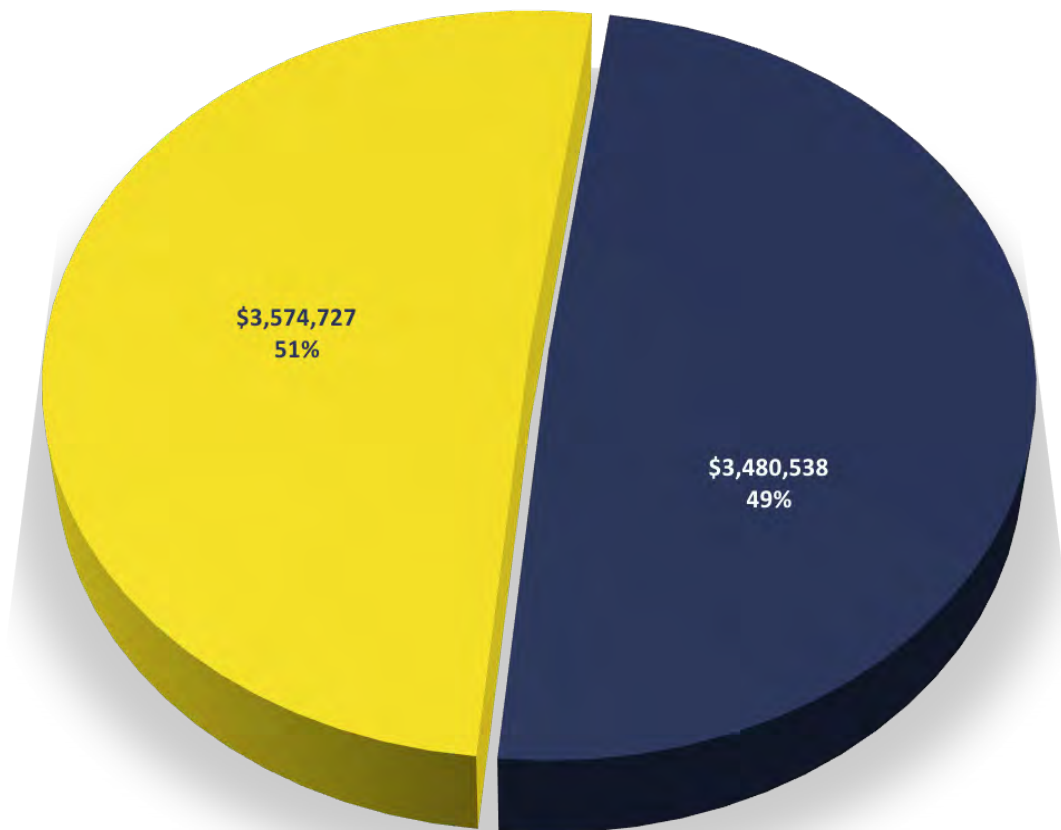


- Administrative Activities\*
- Quality Services\*
- Nondirect Services\*
- Direct Services for Children

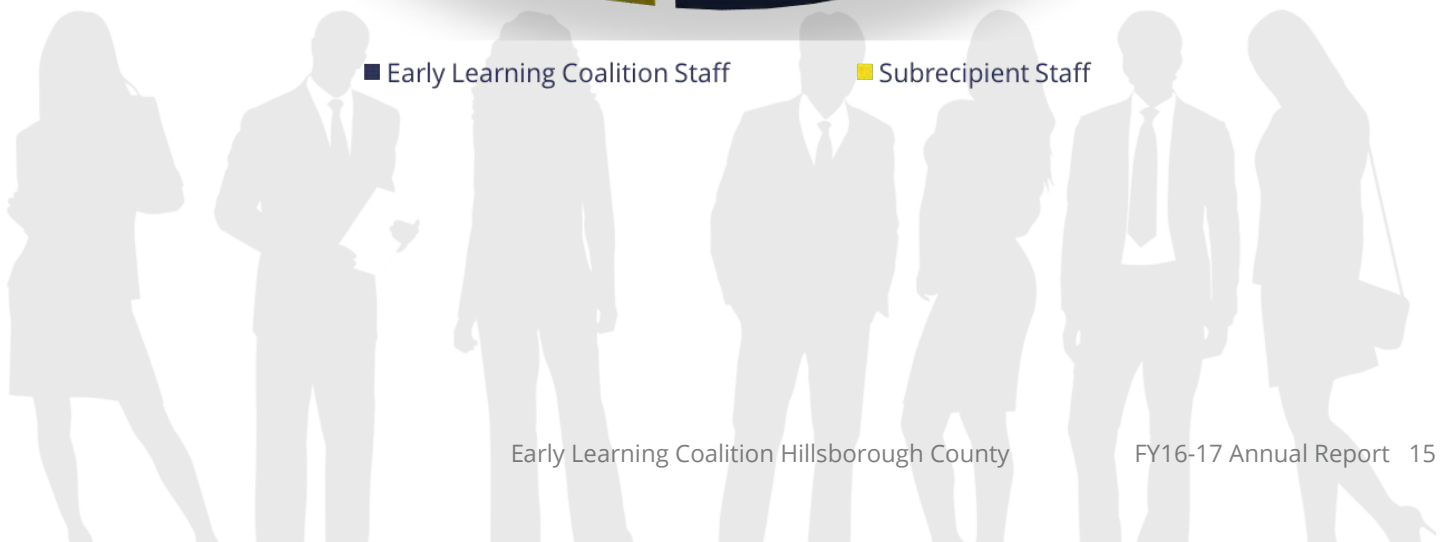
Total number of coalition staff and the related expenditures for salaries and benefits. For any subcontracts, the total number of contracted staff and the related expenditures for salaries and benefits.

	NUMBER OF STAFF	EXPENDITURES FOR SALARY & BENEFITS
Early Learning Coalition Staff	55	\$3,480,538
Sub-recipient Staff	73	\$3,574,727
Total	128	\$7,055,265

### EXPENDITURES FOR SALARY & BENEFITS



■ Early Learning Coalition Staff
 ■ Subrecipient Staff





# ATTACHMENTS

## **ATTACHMENT A**

Trainings by Topic Area

**Page 17**

## **ATTACHMENT B**

Number of school readiness children by provider type, enumerated by eligibility priority category, reported as the number of children served during the month, the average participation throughout the month, and the number of children served during the month.

**Page 24**

## **ATTACHMENT C**

A listing of any school readiness program provider, by type, whose eligibility to deliver the school readiness program is revoked, including a brief description of the state or federal violation that resulted in the revocation.

**Page 25**

## **ATTACHMENT D**

Total number of children served in each provider facility.

**Page 26**



## ATTACHMENT A - Trainings By Topic Area

### Age Appropriate Discipline

#### ***Behavior Coach Training***

The focus of this workshop is on teaming to develop targeted and individualized positive behavior support plans for children with challenging behavior.

#### ***Biting, Scratching, Tantrums, Oh My!***

Participants will gain knowledge about why toddlers engage in biting, scratching, tantrums, and other problem behaviors. In addition, participants will also learn how to respond to these challenging behaviors, understand the behaviors, and develop strategies to support children experiencing these behaviors.

#### ***Tell Them What You Want, What You Really, Really Want: Teaching Rules and Expectations***

Do you feel like some young children don't follow the rules or you have to tell them directions over and over of what to do? Teaching rules and how to follow directions can be hard when your kiddos have only been on the planet for one to five years. Participants will learn fun and easy lesson ideas to incorporate rules and expectations into their daily routines through video samples and make-and-take activities that can be implemented the next day in their classrooms.

#### ***Transitions Don't Have to Be Tricky: Tricks for Terrific Transitions***

Without transition tips and tricks, the time it takes to get children from one activity to another can feel like a ticking time bomb. In this session, we will share a packet of "magic" filled with transition strategies that will prevent challenging behavior and help kids M-O-V-E from one activity to the next. Participants will make-and-take tools to use, receive visual strategies and there will even be a fun raffle giveaways.

### Character Development

#### ***Fill Your Toolbox with Social Emotional Tools and Tips***

A panel of passionate early childhood providers will share "our best of the best" PWPBS social-emotional tools and tips. Participants will learn fun teacher-tested ideas on teaching young children how to problem solve, self-regulate emotions, increase engagement, and promote friendships. A few make-and-take activities will also be integrated into the session, allowing participants to go back to their classrooms the very next day with tools and tips to try out for themselves.

#### ***Toddler and Pre-k Social Emotional Book Nook Bash with PWPBS***

Love to incorporate children's books into your lessons? Join us and learn how to use children's literature to bridge social-emotional skills. This round of book nooks will include problem-solving, empathy, volume control, individual differences, and more. We will share many book nook lesson plans and fun activities that will make stories come to life. There will be door prizes, minimal "talk" and lots of "make-and-take". Bring a bag; you will take home lots of goodies.

#### ***Understanding Sensory Processing and Behavior***

Some children process sensory information differently than others and their behavior may reflect either hypo or hyper sensitivity to sensory input. Come learn about the brain, senses, and how sensory integration affects you and the children you serve. Strategies for helping all children develop their sensory systems will also be included in this fun and interactive workshop.

## **Child Screening and Assessment**

### ***Ages and Stages Questionnaire: Social Emotional***

The focus of this workshop is on screening young children at risk of social emotional delays. The workshop will also cover effective strategies that promote social- emotional development and address challenging behavior in young children.

### ***ASQ Training English***

This two hour Information Session educates participants on the benefits of using developmental screenings with children, and explains the local and state mandate regarding developmental screenings with School Readiness children. It describes the ASQ 3rd Edition, and offers practice completing and scoring the ASQ-3 in accordance with Law 7165. In addition, information will be provided regarding the Early Learning Coalition Hillsborough County mandate on submitting and maintaining completed ASQ's, as well as your partnership with the School Readiness Screening & Assessment team.

### ***ASQ Training-Spanish***

This two hour Information Session educates participants on the benefits of using developmental screenings with children, and explains the local and state mandate regarding developmental screenings with School Readiness children. It describes the ASQ 3rd Edition, and offers practice completing and scoring the ASQ-3 in accordance with Law 7165. In addition, information will be provided regarding the Early Learning Coalition Hillsborough County mandate on submitting and maintaining completed ASQ's, as well as your partnership with the School Readiness Screening & Assessment team.

### ***Introduction to Teaching Strategies GOLD***

Ongoing observation of children while they are involved in regular, everyday activities provides a meaningful snapshot of a child's development. In this training, participants will receive an introduction to Teaching Strategies GOLD (TSG) which is a valid and reliable system for assessing children from birth through kindergarten. In day one, the four steps of the assessment cycle, the 38 Objectives for Development and how to use these to meet individual children's needs will be explored. During day two, participants will have a hands-on opportunity to learn how to use the features of TSG including uploading documentation, entering observation notes and updating checkpoints.

### ***Observation, Documentation and Intentionality in Early Childhood Classrooms***

Get tuned into your inner detective! Learn how to observe and document "just the facts" in order to truly know and understand each child's potential and to make teaching easier. Practice observation techniques and strategies to embed them into your daily routines and to connect observations to assessment. While this training will reference the 38 Objectives for Development & Learning in the Creative Curriculum and Teaching Strategies GOLD, these activities will benefit early childhood teachers using any assessment of learning.

### ***Teaching Strategies GOLD, Beyond the Introduction***

Teaching Strategies GOLD (TSG) is a valid and reliable system for documenting observations related to a child's learning and development. This training is the next step for those who have already completed a 12-hour TSG training (either in person or on-line), have used it through a complete checkpoint and want to further explore the potential of using TSG to support individual children's educational needs.

## **Developmentally Appropriate Curriculum**

### ***Circle, Centers, and Snack, Oh My! Schedules and Routines***

There is a lot to do in a busy preschool day; and it is a very exciting place for toddlers and preschoolers. But all that movin' and groovin' around the room can wear a teacher out. Come find out how to make your day the best it can be with fun ways to engage your youngsters in schedules and routines. There we will be exciting make-and-take activities and even some door prizes.

### ***Come One, Call All To Toddler Circle...Let's Have a Ball!***

Circle time doesn't actually have to look like a "circle" at all. In this session we will discuss developmentally appropriate activities and expectations for group time in toddler classrooms. Participants will have the opportunity to watch videos of group time in action and reflect on their own group time to lesson plan for the future. A raffle will also be provided and every participant will get a scripted story and make-and-take materials to use in their classrooms.

### ***Creative Curriculum for Family Child Care Homes (Spanish)***

The Creative Curriculum for Family Child Care is a comprehensive, research-based curriculum designed to inform understanding of what and how children of various ages learn. This 6-hour training will explore use of the 2 Volumes, DVDs and Learning Games resources to guide planning, on-going assessment and intentional, responsive care for all children in the home setting.

### ***Creative Curriculum for Infants, Toddlers and Twos***

During this two-day training participants will explore the three volumes of the Creative Curriculum for Infants, Toddlers and Twos in order to understand the importance of responsive care and to learn how to incorporate the 38 research-based objectives for development and learning in order to focus on what matters most for young children.

### ***Creative Curriculum for Preschool***

During this two-day training participants will explore the five volumes of the Creative Curriculum for Preschool in order to understand the importance of responsive care and to learn how to incorporate the 38 research-based objectives for development and learning in order to focus on what matters most for young children.

### ***Implementing Project Work Studies in the Preschool Classroom***

Are you using the Creative Curriculum for Preschool but don't have the "system" with the collection of daily practice resources? OR do you just want to develop some additional studies of your own? If you said yes to either, this training is for you. Participants will explore the process of developing a study and how to make it meaningful based on the interest of the children in your classroom.

### ***Early Childhood Symposium for Infants & Toddlers***

Teachers will attend 4 sessions learning hands-on activities for Literacy, Science, Social Emotional and How to use the ILP (Yellow Sheet).

### ***Early Childhood Symposium for Preschool Teachers***

Training will consist of three sessions that will include new strategies for use in the preschool classroom. Sessions shall be strategies to start the year off right [The Fabulous First 30 Days], Strategies for conducting read-alouds and shared reading techniques [Rockin' Reading Strategies] and how to use complete the ASQ-ILP [What Do I Do With That Yellow Sheet? (ASQ-ILP)].

### ***Explore It! (Science) Design it! (Engineering) Use it! (Technology)***

Hands-on activities to help care-givers understand the relevance of science, engineering, and technology in afterschool settings.

### ***Explore, Discover and Learn Through Science***

Real Science begins with childhood curiosity which leads to discovery and exploration with teacher help and encouragement. Participants will leave with hands-on activities that will help develop skills across all domains through the integration of science

### ***Growing Up Wild***

Growing Up Wild is an early childhood education program that builds on children's sense of wonder about nature and invites them to explore wildlife and the world around them.

### ***Hook 'Em with Books***

Let's dive into this wonderful resource for new and veteran preschool teachers. Participants will spice up literacy activities with teacher-created and developmentally appropriate materials and activities. Participants will learn how to create a literacy-rich environment preparing preschoolers for Kindergarten. Participants will receive a copy of the NAEYC resource Learning About Language and Literacy in Preschool.

### ***It's More Than Just Talking***

Teachers will learn how to expand language and reasoning through the content areas.

### ***Literacy and Storytelling***

Designed to provide child care professionals with the knowledge and skills to become storytellers. Topics covered are: How storytelling can help language growth, Teacher techniques in storytelling, The ability to create a story that meets suggested criteria, Promotion of child-created stories.

### ***Math Explosion***

Didn't like math in school? Not sure how to implement math activities for your preschool children? This is the training for you! Hands-on activities that assist preschool teachers in creating environments in which children are eager to explore and learn about math. Participants will receive the NAEYC Exploring Math and Science in Preschool resource!

### ***Onset, Rhyme, Alphabet Time and Writing, Too!***

Teachers will learn developmentally appropriate activities for preschool children that will help with later success in Kindergarten.

### ***Planning for Instruction***

Now that you are writing objective observations on the children, what's next? Observations are a way for teachers to plan for instruction. Understanding the interest and needs of your children is key to planning activities and meaningful experiences that will enrich their learning. In this training we will use your observations to create lesson plans that will be intentionally created to meet the needs of the children in your classroom.

### ***Preschoolers PLAY too!***

Teachers will learn the importance of Developmentally Appropriate learning environments that promotes learning through play in the preschool classroom.

### ***Ready, Set, PLAY***

Teachers will learn the importance of Developmentally Appropriate learning environments that stimulate brain development in infants, toddlers and twos.

### ***So Much Assessment, Not Enough Time!***

Teachers will learn the importance of a developmentally appropriate learning environment that promotes learning through play in the preschool classroom.

The Learning Adventure - Planning for Preschool Children

Teachers will learn how to use the Florida Early Learning and Developmental Standards Birth to Five to know the strengths and needs of their children and support them through writing developmentally appropriate lesson plans.

### ***The Learning Adventure - Planning for Young Children (Infant/Toddler/2)***

Teachers will learn how to use the Florida Early Learning and Developmental Standards Birth to Five to know the strengths and needs of their children and support them through writing developmentally appropriate lesson plans.

### ***Your Boss Is Watching: Are Your Playing? Our Job is to Model for our Children***

Have you ever heard the phrase: "It's a teacher's job to scaffold play? Or what about the phrase: "Children's play is their work?" Sometimes it is hard to sit and play when we feel we should be standing to monitor at all times. This session addresses this concern and how to "play" effectively with our children, while keeping them engaged and helping them initiate and maintain play with their peers. We will discuss toys and play items that promote successful peer interactions and how the teacher can model and scaffold play. We will even give some of those toys away as door prizes.

## **Family Involvement**

### ***Ready For Kindergarten ECE Provider Training***

*READY for Kindergarten!* provides childcare professionals and parents information regarding developmental milestones, skills for teaching age-appropriate pre-kindergarten activities, and materials that ensure a rich early learning environment for children while away from home with a caregiver or at home with a parent. Caregivers and early education teachers have an enormous impact on children reaching development milestones in language, literacy, math, reasoning and social-emotional skills.

### ***Effectively Communicating With Families***

This workshop will provide an overview and understanding of how to effectively communicate with families. Participants will learn about cultural considerations, how to discuss developmental concerns, and linkage to community resources in order to help build rapport and create family friendly early care/ education settings.

### ***Family Engagement " More than a Spaghetti Dinner"***

Parental involvement is a critical part of high-quality early care and education. This training will introduce participants to an innovative new approach to family engagement called "Books, Blocks and Balls".

## **Health, Safety and Nutrition**

### ***Safe Baby Training***

Safe Baby offers hospital and community-based education to teach parents/caregivers about direct actions that they can take to protect babies from the main causes of preventable infant deaths in Hillsborough County. Protective practices include how to choose a safe caregiver, prevent Shaken Baby Syndrome, and promote safe sleep practices.

## **Inclusion and Special Needs**

### ***CARA's Kit for Preschoolers: Creating Adaptation for Routines and Activities***

CARA's Kit is designed for teachers who are involved in providing early care and education for preschool children, particularly those with developmental differences. The kit provides linkages to Pre-K Learning Standards and curricula, and provides a matrix of adaptations that can benefit all children. This training is co-sponsored by Inclusion Support Services and the Early Learning Coalition for VPK teachers and programs participating in Quality Counts for Kids.

### ***CARA's Kit for Toddlers: Creating Adaptation for Routines and Activities***

CARA's Kit is designed for teachers who are involved in providing early care and education for toddlers, particularly those with developmental differences. The kit provides linkages to Learning Standards and curricula, and provides a matrix of adaptations that can benefit all children. This is a great training for

those who have already attended the CARAs Kit for Preschoolers!

### ***The Invisible Suitcase: A Glimpse into Trauma***

Participants will become aware of possible trauma(s) a child/children may have experienced in early childhood. They will learn about the effects of those traumas on children's behavior. Join us to learn about the importance of creating a safe environment, secure relationships, and providing coping skill to young children who have experienced trauma.

## **Management and Administration**

### ***Foundational Management Part 1 - Emergency Preparedness***

Emergencies happen. Is your program prepared? During this training participants will discuss the basic requirements that must be part of every program's emergency preparedness plan, brainstorm with others on ideas on how to handle emergencies, and practice writing policies and procedures to develop a concise working document.

### ***Foundational Management Part 2 - Parent Handbooks***

Participants will discuss the intent and uses of a family handbook and will identify key components to include that reflect the philosophy, goals, and values of their program.

### ***Foundational Management Part 3 - Staff Handbooks***

Does your employee manual reflect your program's philosophy and values? Is it written in such a manner as to support your beliefs of a quality educational environment? In this training participants will develop and review components that support staff efforts to understand expectations and to do their best.

### ***Quality Counts! Orientation for Early Childhood Centers***

This session is designed to offer owners and directors an opportunity to get acquainted with the fundamental concepts of the Quality Counts! quality recognition and improvement system.

### ***Quality Counts! Orientation for Family Child Care Homes***

This session is designed to offer family child care home providers an opportunity to get acquainted with the fundamental concepts of the Quality Counts! quality recognition and improvement system.

## **Program Evaluation**

### ***Introduction to the Early Childhood Environment Rating Scale (ECERS-R)***

Participants will explore the items, subscales and the rating and scoring process of the ECERS-R tool, which is designed to assess preschool classrooms for children from 30 months through five years of age.

### ***Introduction to the Family Child Care Environment Rating Scale (FCCERS-R)***

Participants will explore the items, subscales and the rating and scoring process of the FCCERS-R tool, which is designed to assess family child home programs for children from infancy to school age.

### ***Introduction to the Infant Toddler Environment Rating Scale (ITERS-R)***

Participants will explore the items, subscales and the rating and scoring process of the ITERS-R tool, which is designed to assess infant toddler classrooms for children from infancy through 30 months of age.

***Introduction to the School-Age Care Environment Rating Scale (SACERS)***

Participants will explore the items, subscales and the rating and scoring process of the SACERS tool, which is designed to assess school-age classrooms for children over five years of age.

***Making the Most of Classroom Interactions (MMCI)***

MMCI helps early childhood professionals engage with the Classroom Assessment Scoring System (CLASS) as they identify and understand the interactions that increase children’s learning and development. Participants will: examine the impact of teacher-child interactions and relationships on children’s learning, identify teacher- child interactions that affect child outcomes, and learn how to use the CLASS observation tool for considering teaching practices and guiding observations of classroom videos and real-life interactions.



## ATTACHMENT B - NUMBER OF SCHOOL READINESS CHILDREN BY PROVIDER TYPE

Category	Billing Period												Monthly Average
	Jul-16	Aug-16	Sep-16	Oct-16	Nov-16	Dec-16	Jan-17	Feb-17	Mar-17	Apr-17	May-17	Jun-17	
<b>1. Licensed Private Centers</b>	<b>8,774</b>	<b>8,841</b>	<b>8,254</b>	<b>8,347</b>	<b>8,399</b>	<b>8,379</b>	<b>8,149</b>	<b>8,281</b>	<b>8,460</b>	<b>8,639</b>	<b>8,951</b>	<b>8,749</b>	<b>8,519</b>
1 TCA	311	354	306	311	329	285	250	257	257	294	266	306	294
2 At Risk < Age 9	2,036	2,086	1,994	2,067	2,043	1,971	1,975	2,055	2,167	2,092	2,176	2,206	2,072
3 Econ Disadvantage < SCH Age	4,055	3,712	3,426	3,431	3,453	3,473	1,929	1,947	3,349	3,596	3,890	3,794	3,338
4 TCC < SCH Age	301	281	280	300	304	325	332	330	349	334	373	367	323
5 At Risk Age 9-12	64	65	57	60	61	66	65	65	58	57	54	50	60
6 Econ Disadvantage - SCH Age	1,756	2,199	2,058	2,065	2,094	2,136	1,147	1,161	1,900	1,859	1,964	1,883	1,852
7 TCC SCH Age	133	141	130	109	110	117	112	121	123	115	128	136	123
9 Head Start and VPK	3	3	3	4	5	6	5	3	5	5	6	7	5
CCEP	115						2,334	2,342	252	287	94		904
<b>2. License-Exempt Centers</b>	<b>57</b>	<b>123</b>	<b>148</b>	<b>211</b>	<b>204</b>	<b>171</b>	<b>216</b>	<b>215</b>	<b>217</b>	<b>225</b>	<b>194</b>	<b>93</b>	<b>173</b>
1 TCA	2	2	4	5	7	6	6	5	5	5	5	2	5
2 At Risk < Age 9	16	17	25	33	39	34	45	44	43	40	30	19	32
3 Econ Disadvantage < SCH Age	22	18	19	18	17	16	15	15	16	24	25	23	19
4 TCC < SCH Age	6	6	5	5	5	5	5	6	6	6	8	5	6
5 At Risk Age 9-12	3	5	6	10	12	12	13	13	13	15	16	9	11
6 Econ Disadvantage - SCH Age	8	70	81	131	113	90	74	73	113	114	97	33	83
7 TCC SCH Age		5	8	9	11	8	12	11	13	13	11	2	9
CCEP							46	48	8	8	2		22
<b>3. Large Family Child Care Home</b>	<b>190</b>	<b>174</b>	<b>175</b>	<b>174</b>	<b>204</b>	<b>198</b>	<b>202</b>	<b>199</b>	<b>185</b>	<b>200</b>	<b>217</b>	<b>222</b>	<b>195</b>
1 TCA	1	1	2	3	2	5	3	6	4	5	6	8	4
2 At Risk < Age 9	27	28	33	32	38	35	40	38	36	37	35	35	35
3 Econ Disadvantage < SCH Age	139	110	108	109	122	118	67	63	104	112	123	131	109
4 TCC < SCH Age	2	2	3	3	5	6	5	5	7	7	10	10	5
5 At Risk Age 9-12					1	1	1	1					1
6 Econ Disadvantage - SCH Age	21	33	29	27	36	33	22	22	29	30	35	33	29
7 TCC SCH Age											4	5	5
CCEP							64	64	5	9	4		29
<b>4. Licensed Family Child Care Home</b>	<b>976</b>	<b>958</b>	<b>917</b>	<b>923</b>	<b>860</b>	<b>843</b>	<b>815</b>	<b>821</b>	<b>813</b>	<b>835</b>	<b>831</b>	<b>802</b>	<b>866</b>
1 TCA	32	27	31	27	16	18	16	14	17	16	12	12	20
2 At Risk < Age 9	139	155	169	171	162	147	149	158	151	160	167	158	157
3 Econ Disadvantage < SCH Age	537	477	440	447	425	415	188	193	388	402	407	395	393
4 TCC < SCH Age	44	42	45	47	51	50	45	44	45	48	46	44	46
5 At Risk Age 9-12	9	10	7	8	6	8	7	8	8	6	7	8	8
6 Econ Disadvantage - SCH Age	192	227	209	206	182	181	73	74	147	145	164	170	164
7 TCC SCH Age	12	16	14	15	16	22	17	19	18	13	11	12	15
9 Head Start and VPK	3	4	2	2	2	2			3	3	4	3	3
CCEP	8						320	311	36	42	13		122
<b>7. Public School</b>	<b>486</b>	<b>794</b>	<b>988</b>	<b>995</b>	<b>1,029</b>	<b>941</b>	<b>1,024</b>	<b>1,022</b>	<b>996</b>	<b>1,025</b>	<b>974</b>	<b>606</b>	<b>907</b>
1 TCA	9	19	43	44	42	32	33	38	24	33	29	11	30
2 At Risk < Age 9	68	112	168	170	182	162	176	161	147	144	134	77	142
3 Econ Disadvantage < SCH Age	36	26	33	25	24	23	18	21	25	28	28	30	26
4 TCC < SCH Age			1	1	1		3	3	4	4	4	4	3
5 At Risk Age 9-12	24	25	23	24	26	26	24	25	24	25	24	15	24
6 Econ Disadvantage - SCH Age	337	588	675	683	707	657	375	386	682	693	683	438	575
7 TCC SCH Age	12	24	45	48	47	41	49	49	49	52	58	31	42
CCEP							346	339	41	46	14		157
<b>Grand Total</b>	<b>10,483</b>	<b>10,890</b>	<b>10,482</b>	<b>10,650</b>	<b>10,696</b>	<b>10,532</b>	<b>10,406</b>	<b>10,538</b>	<b>10,671</b>	<b>10,924</b>	<b>11,167</b>	<b>10,472</b>	<b>10,659</b>

Data is from the Consolidated Database as of June 2017.



## ATTACHMENT C - Listing of School Readiness & VPK Provider Revocations

### Listing of School Readiness Provider Revocations

Provider Name	Provider Type	Reason(s) for Revocation
ALONSO, RAQUEL C.	Licensed Family Child Care Home	Failure to comply with program or contract requirements may result in contract termination and inability to deliver school readiness or VPK for 5 years.
SORIANO, MARIA S.	Licensed Family Child Care Home	Failure to comply with program or contract requirements may result in contract termination and inability to deliver school readiness or VPK for 5 years.
CHILDREN OF LIGHT ACADEMY	Licensed Private Center	Failure to comply with program or contract requirements may result in contract termination and inability to deliver school readiness or VPK for 5 years.
FINLEY, JOYCE ANNE	Licensed Family Child Care Home	Failure to comply with program or contract requirements may result in contract termination and inability to deliver school readiness or VPK for 5 years.
JAMES, BEULAH M.	Family Child Care Home	Failure to comply with program or contract requirements may result in contract termination and inability to deliver school readiness or VPK for 5 years.
NOAH'S PRESCHOOL ACADEMY II	Licensed Private Centers	Provider shares an officer or director with a provider that is convicted of, found guilty of, pleads guilty or nolo contendere regardless of adjudication to public assistance fraud. Remains ineligible for 5 years.

*Data is from the consolidated database as of June 2017.*

### Listing of VPK Provider Revocations

There were no VPK providers to report for FY16-17.

*Data is from the consolidated database as of June 2017.*

## ATTACHMENT D - Total number of children served in each provider facility

Provider Name	City	County	Children Served		
			Total	School Readiness	VPK
(DNU) A CHILDREN'S KASTLE EARLY LC INC	VALRICO	HILLSBOROUGH COUNTY	15	15	0
(DNU) A LITTLE KIDS ACADEMY, INC.	SEFFNER	HILLSBOROUGH COUNTY	47	36	11
(DNU) ACHIEVEMENT CENTER FOR KIDS LLC	TAMPA	HILLSBOROUGH COUNTY	92	68	24
(DNU) BEST FRIENDS FOR KIDZ	BRANDON	HILLSBOROUGH COUNTY	77	61	16
(DNU) BOYS AND GIRLS CLUB NICK CAPITANO	TAMPA	HILLSBOROUGH COUNTY	5	5	0
(DNU) CHARLES, MARQUILA J.	TAMPA	HILLSBOROUGH COUNTY	4	4	0
(DNU) CREATIVE WORLD THOMPSON	TAMPA	HILLSBOROUGH COUNTY	135	84	51
(DNU) ELLIS, TRACY L.	TAMPA	HILLSBOROUGH COUNTY	7	7	0
(DNU) FUTURE STARS LEARNING CENTER	TAMPA	HILLSBOROUGH COUNTY	47	40	7
(DNU) GABRIELLE'S GLEN	TEMPLE TERRACE	HILLSBOROUGH COUNTY	68	68	0
(DNU) GARCIA, MAYSSEL	TAMPA	HILLSBOROUGH COUNTY	4	4	0
(DNU) GONZALEZ-PRIETO, MARIA JULIA	TAMPA	HILLSBOROUGH COUNTY	2	2	0
(DNU) GRANT PARK CHRISTIAN ACADEMY	TAMPA	HILLSBOROUGH COUNTY	10	6	4
(DNU) GREEN HOUSE LEARNING ACADEMY	TAMPA	HILLSBOROUGH COUNTY	23	10	13
(DNU) GREEN, CHERRIE B	TAMPA	HILLSBOROUGH COUNTY	4	4	0
(DNU) HAMERTER, CLAUDIA L.	TAMPA	HILLSBOROUGH COUNTY	1	1	0
(DNU) HERNANDEZ, YARELYS	TAMPA	HILLSBOROUGH COUNTY	2	2	0
(DNU) JONES, DEBORAH E	TAMPA	HILLSBOROUGH COUNTY	2	2	0
(DNU) KIDZ WONDERLAND ACADEMY	TAMPA	HILLSBOROUGH COUNTY	33	33	0
(DNU) MANNING, MICHELLE W	TAMPA	HILLSBOROUGH COUNTY	6	6	0
(DNU) MATTHEWS, JOHNNIE M	TAMPA	HILLSBOROUGH COUNTY	2	2	0
(DNU) MIS' GINNY'S INC HWY 92	SEFFNER	HILLSBOROUGH COUNTY	76	52	24
(DNU) MIS' GINNY'S INC. PARSONS	BRANDON	HILLSBOROUGH COUNTY	75	59	16
(DNU) MIS' GINNY'S INC. LAKEWOOD	BRANDON	HILLSBOROUGH COUNTY	80	54	26
(DNU) MOFFITT CHILD DEVELOPMENT CENTER	TAMPA	HILLSBOROUGH COUNTY	26	6	20
(DNU) PRIMROSE SCHOOL OF LUTZ	LUTZ	HILLSBOROUGH COUNTY	20	2	18
(DNU) PRIMROSE SCHOOL OF TAMPA PALMS	TAMPA	HILLSBOROUGH COUNTY	69	0	69
(DNU) PROMISELAND AFTERSCHL-METRO MINIST	TAMPA	HILLSBOROUGH COUNTY	57	57	0
(DNU) RICHARDSON, MARGARET	TAMPA	HILLSBOROUGH COUNTY	5	5	0
(DNU) SANDERS, CHAUNDRA R.	TAMPA	HILLSBOROUGH COUNTY	7	7	0
(DNU) SIMMON'S ACHIEVEMENT CENTER	BRANDON	HILLSBOROUGH COUNTY	169	133	36
(DNU) SORIANO, MARIA S	TAMPA	HILLSBOROUGH COUNTY	3	3	0
(DNU) TERRY LEARNING CENTER	TAMPA	HILLSBOROUGH COUNTY	28	13	15
(DNU) THE WORD OF HIS GRACE L.D.C. PRE	SEFFNER	HILLSBOROUGH COUNTY	36	27	9
(DNU) THINK LOVED CHILDREN	BRANDON	HILLSBOROUGH COUNTY	44	18	26
(DNU) WARD, IVORY A	TAMPA	HILLSBOROUGH COUNTY	1	1	0
(DNU) WE LOVE THE KIDS	BRANDON	HILLSBOROUGH COUNTY	30	30	0
(DNU) WILLIAMS, ARGELIA L.	TAMPA	HILLSBOROUGH COUNTY	1	1	0
(DNU) YBOR EARLY CHILDHOOD LRNING CTR E	TAMPA	HILLSBOROUGH COUNTY	43	35	8
(DNU) YOUNG, LONNIE F.	TAMPA	HILLSBOROUGH COUNTY	1	1	0
(DNU)A BRIGHTER CHILD DEV. LRNG. CENTER	TAMPA	HILLSBOROUGH COUNTY	10	5	5
(DNU)LIGHT OF THE WORLD CHILDCARE CENTER	TAMPA	HILLSBOROUGH COUNTY	41	41	0
3 LETTERS LEARNING CENTER	TAMPA	HILLSBOROUGH COUNTY	51	41	10
A + LEARNING CENTER	PLANT CITY	HILLSBOROUGH COUNTY	106	106	0
A BRIDGE OF LEARNING	TAMPA	HILLSBOROUGH COUNTY	93	75	18
A BRIGHTER COMMUNITY, INC.	TAMPA	HILLSBOROUGH COUNTY	44	13	31
A BRIGHTER FUTURE CARROLLWOOD	TAMPA	HILLSBOROUGH COUNTY	63	42	21
A CHILD'S HAVEN PRIVATE PRESCHOOL	VALRICO	HILLSBOROUGH COUNTY	80	16	64
A CHILD'S WORLD LEARNING ACADEMY	TAMPA	HILLSBOROUGH COUNTY	150	126	24
A CHILD'S WORLD LEARNING ACADEMY II	TAMPA	HILLSBOROUGH COUNTY	137	111	26
A CHILDREN'S KASTLE ELC INC. AT WINTHROP	RIVERVIEW	HILLSBOROUGH COUNTY	51	9	42
A FIRST STEP FOR EARLY LEARNING	TAMPA	HILLSBOROUGH COUNTY	75	75	0
A LEARNING SPACE ACADEMY	TAMPA	HILLSBOROUGH COUNTY	159	159	0
A LITTLE KIDS ACADEMY	SEFFNER	HILLSBOROUGH COUNTY	47	37	10
A PERFECT START EARLY LRNG CHILDCARE CTR	TAMPA	HILLSBOROUGH COUNTY	78	78	0
A READINESS LEARNING ACADEMY INC.	APOLLO BEACH	HILLSBOROUGH COUNTY	62	30	32

Provider Name	City	County	Children Served		
			Total	School Readiness	VPK
A TODAY'S CHILD	TAMPA	HILLSBOROUGH COUNTY	53	53	0
A.J.'S ANGELS I	RUSKIN	HILLSBOROUGH COUNTY	72	72	0
A.J.'S ANGELS II	RUSKIN	HILLSBOROUGH COUNTY	180	144	36
ACADEMY FOR BRIGHT AND GIFTED CHILDREN	TAMPA	HILLSBOROUGH COUNTY	14	14	0
ACADEMY FOR TOTS	TAMPA	HILLSBOROUGH COUNTY	37	28	9
ACADEMY KIDS LEARNING CENTER	TAMPA	HILLSBOROUGH COUNTY	8	0	8
ACADEMY OF ACHIEVERS	TAMPA	HILLSBOROUGH COUNTY	81	52	29
ACADEMY OF ACTIVE EDUCATION	TAMPA	HILLSBOROUGH COUNTY	69	60	9
ACADEMY OF MONTESSORI INTERNATIONAL	THONOTOSASSA	HILLSBOROUGH COUNTY	23	0	23
ACADEMY OF OUR SAVIOUR	TAMPA	HILLSBOROUGH COUNTY	31	0	31
ACADEMY OF TAMPA DBA KIDS CORNER	TAMPA	HILLSBOROUGH COUNTY	246	222	24
ACADEMY OF TAMPA DBA UNIVERSITY CCC	TAMPA	HILLSBOROUGH COUNTY	205	187	18
ACADEMY OF TAMPA DBA VILLAGE CCC	TAMPA	HILLSBOROUGH COUNTY	81	81	0
ACADEMY OF TAMPA DBA WEE CARE	TAMPA	HILLSBOROUGH COUNTY	159	142	17
ACADEMY OF TPA INC.D/B/A CHILDREN'S DISC	TAMPA	HILLSBOROUGH COUNTY	262	250	12
ACADEMY TO SUCCESS	TAMPA	HILLSBOROUGH COUNTY	19	8	11
ACHIEVEMENT CENTER	TAMPA	HILLSBOROUGH COUNTY	213	170	43
ACHIEVEMENT CENTER DALE MABRY	TAMPA	HILLSBOROUGH COUNTY	62	49	13
ACOSTA, MARTA	TAMPA	HILLSBOROUGH COUNTY	2	2	0
ACOSTA-PALOMINO, AYME	TAMPA	HILLSBOROUGH COUNTY	4	4	0
ACOSTA-TRUJILLO, YANARA	TAMPA	HILLSBOROUGH COUNTY	1	1	0
ADVANTAGE ACADEMY OF HILLSBOROUGH SAP	PLANT CITY	HILLSBOROUGH COUNTY	3	3	0
AGUERO-GONZALEZ, MARIELA	TAMPA	HILLSBOROUGH COUNTY	6	6	0
ALARCON, IDELSIS	TAMPA	HILLSBOROUGH COUNTY	6	6	0
ALL GOD KIDS ACADEMY	TAMPA	HILLSBOROUGH COUNTY	127	127	0
ALL KIDS ACADEMY	LUTZ	PASCO COUNTY	4	4	0
ALL NATIONS PRESCHOOL	RIVERVIEW	HILLSBOROUGH COUNTY	19	0	19
ALMOST ANGELS ACADEMY	THONOTOSASSA	HILLSBOROUGH COUNTY	30	30	0
ALMOST HOME AFTERSCHOOL CENTER INC.	LUTZ	HILLSBOROUGH COUNTY	24	6	18
ALPHABET LEARNING CENTER INC.	TAMPA	HILLSBOROUGH COUNTY	57	45	12
ALVAREZ, TERESA	TAMPA	HILLSBOROUGH COUNTY	1	1	0
ALWAYS JOYFUL PRESCHOOL ACADEMY	TAMPA	HILLSBOROUGH COUNTY	96	87	9
ALWAYS KIDS ACADEMY LLC	TAMPA	HILLSBOROUGH COUNTY	81	38	43
AMERICAN YOUTH ACADEMY	TAMPA	HILLSBOROUGH COUNTY	48	1	47
AMIGO-NAZCO, MARLENE	BRANDON	HILLSBOROUGH COUNTY	1	1	0
ANDERSON, JENNIFER S.	TAMPA	HILLSBOROUGH COUNTY	33	27	6
ANZARDO, TANIA	TAMPA	HILLSBOROUGH COUNTY	3	3	0
APOLLO BEACH CHRISTIAN PRESCHOOL	APOLLO BEACH	HILLSBOROUGH COUNTY	45	0	45
APOSTLES LUTHERAN CHURCH PRESCHOOL	BRANDON	HILLSBOROUGH COUNTY	18	0	18
AQUINO, GLENNYS M.	TAMPA	HILLSBOROUGH COUNTY	5	5	0
ARENAS, FACUNDA U.	TAMPA	HILLSBOROUGH COUNTY	10	10	0
ARIAS, MISLEYDIS	TAMPA	HILLSBOROUGH COUNTY	1	1	0
ARTEAGA-JIMENEZ, LEYVIS	TAMPA	HILLSBOROUGH COUNTY	2	2	0
ATELONIE, LISA L.	TAMPA	HILLSBOROUGH COUNTY	3	3	0
AUTUMN LEAF ACADEMY	PLANT CITY	HILLSBOROUGH COUNTY	113	89	24
AVENDANO-FRANCO, LUZ ANGELA	TAMPA	HILLSBOROUGH COUNTY	1	1	0
AVILA, JACQUELINE	TAMPA	HILLSBOROUGH COUNTY	13	13	0
AVILA-COBAS, MIRELDA V.	TAMPA	HILLSBOROUGH COUNTY	1	1	0
B & G DAY CARE AND KINDERGARTEN INC.	DOVER	HILLSBOROUGH COUNTY	62	51	11
BABY STEPS EARLY STEPS	TAMPA	HILLSBOROUGH COUNTY	129	129	0
BACKYARD BEARS DAY SCHOOL	TAMPA	HILLSBOROUGH COUNTY	111	72	39
BAKER, DAFFIE J.	BRANDON	HILLSBOROUGH COUNTY	2	2	0
BARREIRO, NIOLYS	TAMPA	HILLSBOROUGH COUNTY	2	2	0
BARRETO, ANA MARIA	TAMPA	HILLSBOROUGH COUNTY	5	5	0
BASULTO, TERESA	TAMPA	HILLSBOROUGH COUNTY	3	3	0
BAY HOPE DAY SCHOOL	LUTZ	HILLSBOROUGH COUNTY	122	0	122
BAYCREST ACADEMY CHILD CARE CENTER I	TAMPA	HILLSBOROUGH COUNTY	62	62	0
BAYCREST ACADEMY CHILD CARE CENTER II	TAMPA	HILLSBOROUGH COUNTY	102	102	0
BEASLEY, OLGA ELENA	TAMPA	HILLSBOROUGH COUNTY	7	7	0

Provider Name	City	County	Children Served		
			Total	School Readiness	VPK
BELL SHOALS BAPTIST ACADEMY	BRANDON	HILLSBOROUGH COUNTY	85	0	85
BENTLEY, SOPHIA S.	TAMPA	HILLSBOROUGH COUNTY	1	1	0
BERMUDEZ, DAIMARA	TAMPA	HILLSBOROUGH COUNTY	1	1	0
BEST FRIENDS FOR KIDZ LEARNING LABORATOR	BRANDON	HILLSBOROUGH COUNTY	63	38	25
BIBLE BASED FELLOWSHIP CHILD CARE CENTER	TEMPLE TERRACE	HILLSBOROUGH COUNTY	189	132	57
BIBLE TRUTH MINISTRIES ACADEMY	TAMPA	HILLSBOROUGH COUNTY	22	17	5
BIBLE TRUTH MINISTRIES ACADEMY SA	TAMPA	HILLSBOROUGH COUNTY	13	13	0
BLAIR, MARGARET DIANE	TAMPA	HILLSBOROUGH COUNTY	6	6	0
BLESSED BEGINNINGS PRESCHOOL ACAD. INC.	TAMPA	HILLSBOROUGH COUNTY	28	28	0
BLOOMINGDALE ACADEMY	RIVERVIEW	HILLSBOROUGH COUNTY	59	38	21
BLOOMINGDALE CHILDREN'S HOUSE	BRANDON	HILLSBOROUGH COUNTY	31	0	31
BOCC BEALSVILLE HEAD START CENTER	PLANT CITY	HILLSBOROUGH COUNTY	23	0	23
BOCC BRANDON COMMUNITY HEAD START	TAMPA	HILLSBOROUGH COUNTY	30	0	30
BOCC DEBORAH MCNAIR-CALHOUN HS/EHS	TAMPA	HILLSBOROUGH COUNTY	46	0	46
BOCC DELORIS MCCLOUD HEAD START	TAMPA	HILLSBOROUGH COUNTY	51	0	51
BOCC GRANT PARK HEAD START	TAMPA	HILLSBOROUGH COUNTY	23	0	23
BOCC JACKSON SPRINGS HEAD START	TAMPA	HILLSBOROUGH COUNTY	27	0	27
BOCC LA PALOMA HEAD START	TAMPA	HILLSBOROUGH COUNTY	32	0	32
BOCC MANGO HEAD START/EHS	SEFFNER	HILLSBOROUGH COUNTY	43	0	43
BOCC MOSI HEAD START & PRESCHOOL CENTER	TEMPLE TERRACE	HILLSBOROUGH COUNTY	35	0	35
BOCC NORTH TAMPA COMMUNITY HEAD START	TAMPA	HILLSBOROUGH COUNTY	47	0	47
BOCC NYE PARK HEAD START	LUTZ	HILLSBOROUGH COUNTY	17	0	17
BOCC PLANT CITY HEAD START CENTER	PLANT CITY	HILLSBOROUGH COUNTY	20	0	20
BOCC ROBLES PARK HEAD START CENTER	TAMPA	HILLSBOROUGH COUNTY	19	0	19
BOCC SOUTH COUNTY HEAD START CENTER	RUSKIN	HILLSBOROUGH COUNTY	30	0	30
BOCC STRAWBERRY HILLS HS EHS	PLANT CITY	HILLSBOROUGH COUNTY	20	0	20
BOCC TOWN AND COUNTRY COMMONS HDST	TAMPA	HILLSBOROUGH COUNTY	35	0	35
BOYS AND GIRLS CLUB BRANDON BILL CAREY	BRANDON	HILLSBOROUGH COUNTY	21	21	0
BOYS AND GIRLS CLUB GARCIA SALESIAN	TAMPA	HILLSBOROUGH COUNTY	15	15	0
BOYS AND GIRLS CLUB GEORGE STEINBRENNER	TAMPA	HILLSBOROUGH COUNTY	2	2	0
BOYS AND GIRLS CLUB RIVERVIEW	RIVERVIEW	HILLSBOROUGH COUNTY	7	7	0
BOYS AND GIRLS CLUB WEST PLANT CITY	PLANT CITY	HILLSBOROUGH COUNTY	6	6	0
BOYS AND GIRLS CLUB WILBERT DAVIS	TAMPA	HILLSBOROUGH COUNTY	12	12	0
BRADLEY, ROSALIND (LISA) F.	PLANT CITY	HILLSBOROUGH COUNTY	14	14	0
BRANDON DAY SCHOOL	BRANDON	HILLSBOROUGH COUNTY	52	25	27
BRANDON SPORTS AND AQUATIC CENTER	BRANDON	HILLSBOROUGH COUNTY	38	25	13
BRAVO-TREJO, YADIRA DBA ORLEANS LTLE ANG	TAMPA	HILLSBOROUGH COUNTY	7	7	0
BREATH OF LIFE ACADEMY	TAMPA	HILLSBOROUGH COUNTY	58	47	11
BRIDGES AT WESLEY EARLY LEARNING CENTER	TAMPA	HILLSBOROUGH COUNTY	28	0	28
BRIGHT HORIZONS AT TAMPA GENERAL	TAMPA	HILLSBOROUGH COUNTY	19	0	19
BRIGHT HORIZONS CHILDREN'S CTR - CYPRESS	TAMPA	HILLSBOROUGH COUNTY	46	0	46
BRIGHT HORIZONS CHILDREN'S CTR - HUNTERS	TAMPA	HILLSBOROUGH COUNTY	48	0	48
BRIGHT START ACHIEVEMENT CENTER	TAMPA	HILLSBOROUGH COUNTY	132	122	10
BRIGHTER DAYS - HWY 92	SEFFNER	HILLSBOROUGH COUNTY	73	58	15
BRIGHTER DAYS - LAKEWOOD	BRANDON	HILLSBOROUGH COUNTY	71	52	19
BRIGHTER DAYS - PARSONS	BRANDON	HILLSBOROUGH COUNTY	54	42	12
BRIGHTER DAYS LLC D/B/A STEPPING STONE	TAMPA	HILLSBOROUGH COUNTY	137	127	10
BRONSON, LAVONNDREA	TAMPA	HILLSBOROUGH COUNTY	15	15	0
BROOKINS, STEPHANIE Y.	TAMPA	HILLSBOROUGH COUNTY	4	4	0
BROOKWOOD ACADEMY	TAMPA	HILLSBOROUGH COUNTY	18	18	0
BROWNS TOWN DAYCARE	GIBSONTON	HILLSBOROUGH COUNTY	79	61	18
BRUCE, DESIREE A.	TAMPA	HILLSBOROUGH COUNTY	2	2	0
BURNEY, ALISON D.	VALRICO	HILLSBOROUGH COUNTY	3	3	0
CABRERA, MARIA J.	TAMPA	HILLSBOROUGH COUNTY	3	3	0
CAMPBELL, CATHERINE ANN	TAMPA	HILLSBOROUGH COUNTY	9	9	0
CAMPBELL, JEFFERY R	TAMPA	HILLSBOROUGH COUNTY	3	3	0
CAMPBELL, LATONYA S.	TAMPA	HILLSBOROUGH COUNTY	25	25	0
CARDONA, YARILYNN	RIVERVIEW	HILLSBOROUGH COUNTY	6	6	0
CARE-A-LOT CHILD CARE CENTER, INC.	TAMPA	HILLSBOROUGH COUNTY	30	30	0
CARLTON ACADEMY DAY SCHOOL	TAMPA	HILLSBOROUGH COUNTY	28	0	28

Provider Name	City	County	Children Served		
			Total	School Readiness	VPK
CARRASCO, DEYANIRA	BRANDON	HILLSBOROUGH COUNTY	1	1	0
CARRERO, ANA R. DBA SWEET DREAMS F.C.C.	TAMPA	HILLSBOROUGH COUNTY	6	6	0
CARRILLO OCHOA, ANTONIA	TAMPA	HILLSBOROUGH COUNTY	3	3	0
CARRILLO, MARIA E.	RIVERVIEW	HILLSBOROUGH COUNTY	10	4	6
CARROLLWOOD VILLAGE KIND. & DAY NURSERY	TAMPA	HILLSBOROUGH COUNTY	41	30	11
CASTANO, SANDY	TAMPA	HILLSBOROUGH COUNTY	11	11	0
CASTEJON, AIDA C.	TAMPA	HILLSBOROUGH COUNTY	3	3	0
CASTILLO, SANDRA	TAMPA	HILLSBOROUGH COUNTY	3	3	0
CASTLES OF IMAGINATION	BRANDON	HILLSBOROUGH COUNTY	93	65	28
CELEBRITY KIDS CLUB DBA PRECIOUS BUNDLE	TAMPA	HILLSBOROUGH COUNTY	190	190	0
CENTRAL BAPTIST CHRISTIAN SCHOOL	BRANDON	HILLSBOROUGH COUNTY	16	0	16
CFM-ROSA VALDEZ CENTER	TAMPA	HILLSBOROUGH COUNTY	84	74	10
CHILD KARE SOLUTIONS	SEFFNER	HILLSBOROUGH COUNTY	82	27	55
CHILDCARE OF BRANDON	BRANDON	HILLSBOROUGH COUNTY	107	38	69
CHILDLIFE PRESCHOOL - LYNN RD.	TAMPA	HILLSBOROUGH COUNTY	96	32	64
CHILDLIFE PRESCHOOL - WATERS AVE.	TAMPA	HILLSBOROUGH COUNTY	57	18	39
CHILDREN'S ACADEMY	BRANDON	HILLSBOROUGH COUNTY	116	30	86
CHILDREN'S ARK EARLY LEARNING	VALRICO	HILLSBOROUGH COUNTY	76	24	52
CHILDREN'S LAND OF IMAGINATION ACADEMY	ODESSA	HILLSBOROUGH COUNTY	42	15	27
CHILDREN'S NEST CCC, INC. - SR 54	LUTZ	PASCO COUNTY	10	10	0
CHILDREN'S NEST DAY SCHOOL - 62ND ST.	TEMPLE TERRACE	HILLSBOROUGH COUNTY	71	32	39
CHILDREN'S NEST DAY SCHOOL - BRYAN	BRANDON	HILLSBOROUGH COUNTY	71	43	28
CHILDREN'S NEST DAY SCHOOL - DELEON	TAMPA	HILLSBOROUGH COUNTY	51	23	28
CHILDREN'S NEST DAY SCHOOL - JACKSON SPR	TAMPA	HILLSBOROUGH COUNTY	56	43	13
CHILDREN'S NEST DAY SCHOOL - MAPLEDALE	TAMPA	HILLSBOROUGH COUNTY	55	19	36
CHILDREN'S NEST DAY SCHOOL - MENDONSA	PLANT CITY	HILLSBOROUGH COUNTY	110	58	52
CHIPP, CYNTHIA A	TAMPA	HILLSBOROUGH COUNTY	33	33	0
CHIRINO, LILLIAM R.	TAMPA	HILLSBOROUGH COUNTY	11	11	0
CHRISTINE WILSON SPEECH LANG PATH LLC	TAMPA	HILLSBOROUGH COUNTY	1	0	1
CHRISTOPHER, JOYCE C.	TAMPA	HILLSBOROUGH COUNTY	16	16	0
CIRCA LRNG CTR/DBA KIDS R KIDS #15	LITHIA	HILLSBOROUGH COUNTY	69	3	66
CIRCLE C RANCH ACADEMY	TAMPA	HILLSBOROUGH COUNTY	177	10	167
CITIGROUP FAMILY CENTER	TAMPA	HILLSBOROUGH COUNTY	76	7	69
CITRUS PARK CHILDREN'S LEARNING ACADEMY	TAMPA	HILLSBOROUGH COUNTY	3	3	0
CITRUS PARK CHRISTIAN SCHOOL	TAMPA	HILLSBOROUGH COUNTY	36	0	36
CLARK, SHANNON L.	TAMPA	HILLSBOROUGH COUNTY	11	11	0
CLAVIJO, ROSSANA C.	TAMPA	HILLSBOROUGH COUNTY	7	7	0
COLLAZO, YIGSYS	TAMPA	HILLSBOROUGH COUNTY	2	2	0
COLLEGE HILL COGIC PRESCHOOL	TAMPA	HILLSBOROUGH COUNTY	73	47	26
COLLINS, CAROLYN J.	TAMPA	HILLSBOROUGH COUNTY	8	8	0
COLOUR THEIR WORLD INC	BRANDON	HILLSBOROUGH COUNTY	19	19	0
COPELAND, CHEMETRIA Y.	TAMPA	HILLSBOROUGH COUNTY	10	10	0
CORA, TAMIKA S.	BRANDON	HILLSBOROUGH COUNTY	2	2	0
CORDERO, KIRENIA	TAMPA	HILLSBOROUGH COUNTY	10	10	0
COUNTRY WAY VILLAGE CHILD CARE	TAMPA	HILLSBOROUGH COUNTY	87	71	16
COUNTRYSIDE MONTESSORI ACADEMY	LUTZ	HILLSBOROUGH COUNTY	4	0	4
CREATIVE BEGINNINGS LEARNING CENTER	TAMPA	HILLSBOROUGH COUNTY	30	30	0
CREATIVE KIDZ LEARNING ACADEMY	GIBSONTON	HILLSBOROUGH COUNTY	121	98	23
CREATIVE WORLD CAUSEWAY	TAMPA	HILLSBOROUGH COUNTY	228	85	143
CREATIVE WORLD FISHHAWK	LITHIA	HILLSBOROUGH COUNTY	79	16	63
CREATIVE WORLD RIVERCREST	RIVERVIEW	HILLSBOROUGH COUNTY	135	28	107
CREATIVE WORLD SCHOOL APOLLO BEACH	APOLLO BEACH	HILLSBOROUGH COUNTY	174	58	116
CREATIVE WORLD SCHOOL CROSS CREEK	TAMPA	HILLSBOROUGH COUNTY	84	0	84
CRESPO, YUDIT	TAMPA	HILLSBOROUGH COUNTY	3	3	0
CROSSROADS BAPTIST CHURCH	LITHIA	HILLSBOROUGH COUNTY	32	21	11
CRUZ, MAYLIN R.	TAMPA	HILLSBOROUGH COUNTY	8	8	0
CRUZ, ROSILDA	TAMPA	HILLSBOROUGH COUNTY	6	6	0
CRUZ-EIRO, SANIA	TAMPA	HILLSBOROUGH COUNTY	3	3	0
CURBELO, YDELSA	TAMPA	HILLSBOROUGH COUNTY	10	10	0

Provider Name	City	County	Children Served		
			Total	School Readiness	VPK
DAVIS, EVELYN A.	TAMPA	HILLSBOROUGH COUNTY	6	6	0
DAVIS, PRECIOUS Y.	TAMPA	HILLSBOROUGH COUNTY	6	2	4
DE LA ROSA, BARBARA J.	TAMPA	HILLSBOROUGH COUNTY	17	17	0
DE LA ROSA, DIUSMARI	TAMPA	HILLSBOROUGH COUNTY	7	7	0
DE LA UZ, NADIEZHDA	TAMPA	HILLSBOROUGH COUNTY	2	2	0
DEAN,ROBIN & JOSEPH DBA NANA'S LRNG POST	VALRICO	HILLSBOROUGH COUNTY	7	2	5
DEL VALLE-MORENO, YURITZA	TAMPA	HILLSBOROUGH COUNTY	7	7	0
DIAZ-ACOSTA, BEATRIZ	TAMPA	HILLSBOROUGH COUNTY	2	2	0
DIAZ-ESPINOSA, YAIMA	TAMPA	HILLSBOROUGH COUNTY	4	4	0
DISCOVERY POINT #39	ODESSA	PASCO COUNTY	1	1	0
DISCOVERY POINT #54	VALRICO	HILLSBOROUGH COUNTY	83	40	43
DISCOVERY POINT #60	RIVERVIEW	HILLSBOROUGH COUNTY	68	0	68
DISCOVERY POINT #70	RIVERVIEW	HILLSBOROUGH COUNTY	62	0	62
DISCOVERY POINT DEVELOPMENT CENTER #34	LUTZ	HILLSBOROUGH COUNTY	80	16	64
DISCOVERY WORLD ACADEMY	RIVERVIEW	HILLSBOROUGH COUNTY	44	18	26
DISCOVERY WORLD ACADEMY SOUTH	RUSKIN	HILLSBOROUGH COUNTY	62	37	25
EARLY STEPS MONTESSORI ACADEMY	TAMPA	HILLSBOROUGH COUNTY	12	0	12
EASTER SEALS CHILD DEVELOPMENT CENTER	TAMPA	HILLSBOROUGH COUNTY	73	73	0
EBERHART, ANNETTE C DBA KIDD'S R US FCC	TAMPA	HILLSBOROUGH COUNTY	16	16	0
ECOPIA DAY SCHOOL	LUTZ	HILLSBOROUGH COUNTY	16	0	16
EINSTEIN LEARNING CENTER LLC	ZEPHYRHILLS	PASCO COUNTY	1	1	0
ELSA KIDS DAYCARE	TAMPA	HILLSBOROUGH COUNTY	54	37	17
ENGRAM, JENNIFER E.	TAMPA	HILLSBOROUGH COUNTY	28	28	0
ERVIN-ROBINSON, RAMONA	TAMPA	HILLSBOROUGH COUNTY	16	16	0
ESPAILLAT, GUADALUPE G.	TAMPA	HILLSBOROUGH COUNTY	3	3	0
ESTEPA, GALIA	TAMPA	HILLSBOROUGH COUNTY	10	10	0
ESTEVEZ, SANDRA	TAMPA	HILLSBOROUGH COUNTY	11	11	0
EVERETT, LASHAN D.	TAMPA	HILLSBOROUGH COUNTY	7	7	0
FAJARDO, TAIMY E	TAMPA	HILLSBOROUGH COUNTY	9	9	0
FAMILY FIRST THERAPY, INC.	LUTZ	HILLSBOROUGH COUNTY	1	0	1
FAMILY LEARNING CENTER	TAMPA	HILLSBOROUGH COUNTY	15	15	0
FAMILY LOVING DAYCARE INC	TAMPA	HILLSBOROUGH COUNTY	59	59	0
FAMILY OF CHRIST LUTHERAN CHILD DEV CTR	TAMPA	HILLSBOROUGH COUNTY	102	9	93
FANTASY ACADEMY	TAMPA	HILLSBOROUGH COUNTY	99	53	46
FAT ALBERT'S DAY CARE	TAMPA	HILLSBOROUGH COUNTY	34	34	0
FERNANDEZ, CHERYL LYNN	TAMPA	HILLSBOROUGH COUNTY	4	4	0
FERNANDEZ-VENEREO, YUMILA	TAMPA	HILLSBOROUGH COUNTY	1	1	0
FERRER-VILLAFANA, LAIMA	TAMPA	HILLSBOROUGH COUNTY	5	5	0
FIRST BAPTIST CHURCH TEMP TERR WEE WORLD	TEMPLE TERRACE	HILLSBOROUGH COUNTY	61	0	61
FIRST BAPTIST LEARNING CENTER	PLANT CITY	HILLSBOROUGH COUNTY	50	0	50
FIRST DISCOVERIES ACADEMY	BRANDON	HILLSBOROUGH COUNTY	58	15	43
FIRST DISCOVERIES CHLD DEV CTR	TAMPA	HILLSBOROUGH COUNTY	56	3	53
FIRST PRESB PRESCHOOL OF BRANDON INC	BRANDON	HILLSBOROUGH COUNTY	14	0	14
FISH HAWK EARLY LEARNING CENTER	LITHIA	HILLSBOROUGH COUNTY	61	0	61
FISH HAWK EARLY LEARNING CENTER II	LITHIA	HILLSBOROUGH COUNTY	97	0	97
FISHER, AGNES V.	PLANT CITY	HILLSBOROUGH COUNTY	11	11	0
FLORES, CLARITZA	TAMPA	HILLSBOROUGH COUNTY	4	4	0
FLYNN, LINDA	TAMPA	HILLSBOROUGH COUNTY	9	9	0
FORD, ALETA J.	TAMPA	HILLSBOROUGH COUNTY	8	8	0
FOREST HILLS LEARNING ACADEMY	TAMPA	HILLSBOROUGH COUNTY	103	75	28
FOREST HILLS PRESBYTERIAN LEARNING CTR	TAMPA	HILLSBOROUGH COUNTY	64	36	28
FOSTER, THUMBELINA	TAMPA	HILLSBOROUGH COUNTY	8	8	0
FOUNDATION CHRISTIAN ACADEMY	VALRICO	HILLSBOROUGH COUNTY	25	0	25
FRANQUI, MARIA C.	TAMPA	HILLSBOROUGH COUNTY	1	1	0
FREDDIE JEAN LEARNING ACADEMY	TAMPA	HILLSBOROUGH COUNTY	123	123	0
FREDDIE JEAN LEARNING ACADEMY 2	TAMPA	HILLSBOROUGH COUNTY	64	64	0
FUSSELL LEARNING ACAD. OAKS AT RIVERVIEW	TAMPA	HILLSBOROUGH COUNTY	107	107	0
FUSSELL LEARNING ACADEMY	TAMPA	HILLSBOROUGH COUNTY	27	3	24
FUSSELL LEARNING ACADEMY INC. DOWNTOWN	TAMPA	HILLSBOROUGH COUNTY	122	122	0

Provider Name	City	County	Children Served		
			Total	School Readiness	VPK
FUTURE LEADERS ACHIEVEMENT LLC	TAMPA	HILLSBOROUGH COUNTY	128	116	12
FUTURE LEADERS ACHIEVEMENT LLC II	TAMPA	HILLSBOROUGH COUNTY	139	127	12
GALLARDO, MARISOL	TAMPA	HILLSBOROUGH COUNTY	2	2	0
GALLART, MAYLEN	TAMPA	HILLSBOROUGH COUNTY	2	2	0
GARCIA, MORAIMA	TAMPA	HILLSBOROUGH COUNTY	2	2	0
GARCIA-RIVERO, ANAIRSY	TAMPA	HILLSBOROUGH COUNTY	14	14	0
GATEWAY CHRISTIAN ACADEMY & PRESCHOOL	TAMPA	HILLSBOROUGH COUNTY	32	15	17
GLENN-MUTCHERSON, TONITA A	TAMPA	HILLSBOROUGH COUNTY	12	12	0
GOD'S GARDEN PRESCHOOL	DOVER	HILLSBOROUGH COUNTY	36	0	36
GOLDEN RULE CHILD CARE CENTER THRASHER	PLANT CITY	HILLSBOROUGH COUNTY	52	52	0
GOLDEN RULE CHILD CARE GOLDEN RULE LANE	PLANT CITY	HILLSBOROUGH COUNTY	159	159	0
GOMEZ-GONZALEZ, BELKYS	TAMPA	HILLSBOROUGH COUNTY	2	2	0
GONZALEZ, ADA NERY	TAMPA	HILLSBOROUGH COUNTY	4	4	0
GONZALEZ, ANA MARIA	TAMPA	HILLSBOROUGH COUNTY	6	6	0
GONZALEZ, CARMEN	TAMPA	HILLSBOROUGH COUNTY	4	4	0
GONZALEZ, DENIA	TAMPA	HILLSBOROUGH COUNTY	2	2	0
GONZALEZ, JANEY Y	TAMPA	HILLSBOROUGH COUNTY	11	11	0
GONZALEZ, MARTA M	TAMPA	HILLSBOROUGH COUNTY	3	3	0
GONZALEZ, SONIA	TAMPA	HILLSBOROUGH COUNTY	4	4	0
GONZALEZ-CABRERA, LILISBET	TAMPA	HILLSBOROUGH COUNTY	1	1	0
GONZALEZ-SANJURJO, MABEL	TAMPA	HILLSBOROUGH COUNTY	2	2	0
GOOD SHEPHERD DAY SCHOOL	TAMPA	HILLSBOROUGH COUNTY	51	0	51
GOODWIN, JOHN JR	BRANDON	HILLSBOROUGH COUNTY	10	10	0
GRAHAM, RENEE	TAMPA	HILLSBOROUGH COUNTY	9	9	0
GRAVETTE-BROWN, SAMANTHA	TAMPA	HILLSBOROUGH COUNTY	14	14	0
GREAT HOPE PRESCHOOL	WESLEY CHAPEL	PASCO COUNTY	3	3	0
GREEN HOUSE LEARNING ACADEMY OF TAMPA	TAMPA	HILLSBOROUGH COUNTY	38	21	17
GUERRA, MICHELLE A	TAMPA	HILLSBOROUGH COUNTY	2	2	0
GUTIERREZ, MARGARITA	TAMPA	HILLSBOROUGH COUNTY	4	4	0
GUZMAN, SHAUNTANE M	TAMPA	HILLSBOROUGH COUNTY	6	6	0
HAMMOND, TONIA F	TAMPA	HILLSBOROUGH COUNTY	10	10	0
HAPPY DAY PRESCHOOL	BRANDON	HILLSBOROUGH COUNTY	59	41	18
HARPER, TAGIE P	TAMPA	HILLSBOROUGH COUNTY	4	4	0
HARRIS, GERALDINE	BRANDON	HILLSBOROUGH COUNTY	1	1	0
HARRISON, BARBARA	TAMPA	HILLSBOROUGH COUNTY	1	1	0
HARRISON, MARY R	TAMPA	HILLSBOROUGH COUNTY	11	11	0
HARVEST TIME CHILD DEVELOPMENT CENTER	TAMPA	HILLSBOROUGH COUNTY	33	23	10
HAYWOOD, LATOSHA M	TAMPA	HILLSBOROUGH COUNTY	24	24	0
HCC DALE MABRY CHILD DEVELOP CTR	TAMPA	HILLSBOROUGH COUNTY	9	0	9
HCC YBOR CHILD DEV CENTER	TAMPA	HILLSBOROUGH COUNTY	19	5	14
HCPS ALEXANDER ELEM H.O.S.T.	TAMPA	HILLSBOROUGH COUNTY	19	19	0
HCPS ALEXANDER SUMMER VPK	TAMPA	HILLSBOROUGH COUNTY	71	0	71
HCPS APOLLO BEACH ELEM H.O.S.T.	APOLLO BEACH	HILLSBOROUGH COUNTY	10	10	0
HCPS BAILEY ELEM H.O.S.T.	DOVER	HILLSBOROUGH COUNTY	14	14	0
HCPS BAILEY SUMMER VPK	DOVER	HILLSBOROUGH COUNTY	58	0	58
HCPS BALLAST POINT ELEM H.O.S.T.	TAMPA	HILLSBOROUGH COUNTY	1	1	0
HCPS BELLAMY ELEM H.O.S.T.	TAMPA	HILLSBOROUGH COUNTY	17	17	0
HCPS BELLAMY SUMMER VPK	TAMPA	HILLSBOROUGH COUNTY	81	0	81
HCPS BENITO MIDDLE H.O.S.T.	TAMPA	HILLSBOROUGH COUNTY	1	1	0
HCPS BEVIS ELEM H.O.S.T.	LITHIA	HILLSBOROUGH COUNTY	1	1	0
HCPS BING ELEM H.O.S.T.	TAMPA	HILLSBOROUGH COUNTY	14	14	0
HCPS BING SUMMER VPK	TAMPA	HILLSBOROUGH COUNTY	75	0	75
HCPS BOYETTE SPRINGS ELEM H.O.S.T.	RIVERVIEW	HILLSBOROUGH COUNTY	6	6	0
HCPS BOYETTE SPRINGS PEEPS/VPK	RIVERVIEW	HILLSBOROUGH COUNTY	8	0	8
HCPS BOYETTE SPRINGS SUMMER VPK	RIVERVIEW	HILLSBOROUGH COUNTY	44	0	44
HCPS BROOKER ELEM H.O.S.T.	BRANDON	HILLSBOROUGH COUNTY	10	10	0
HCPS BROWARD ELEM H.O.S.T.	TAMPA	HILLSBOROUGH COUNTY	21	21	0
HCPS BRYAN ELEM H.O.S.T.	PLANT CITY	HILLSBOROUGH COUNTY	12	12	0
HCPS BRYAN HEAD START VPK	PLANT CITY	HILLSBOROUGH COUNTY	21	0	21
HCPS BRYAN IPEEPS VPK	PLANT CITY	HILLSBOROUGH COUNTY	9	0	9

Provider Name	City	County	Children Served		
			Total	School Readiness	VPK
HCPS BRYAN SUMMER VPK	PLANT CITY	HILLSBOROUGH COUNTY	43	0	43
HCPS BRYANT ELEM H.O.S.T.	TAMPA	HILLSBOROUGH COUNTY	1	1	0
HCPS BRYANT PEEPS/VPK	TAMPA	HILLSBOROUGH COUNTY	8	0	8
HCPS BUCHANAN MIDDLE H.O.S.T.	TAMPA	HILLSBOROUGH COUNTY	1	1	0
HCPS BUCKHORN ELEM H.O.S.T.	VALRICO	HILLSBOROUGH COUNTY	1	1	0
HCPS BURNETT MIDDLE H.O.S.T.	SEFFNER	HILLSBOROUGH COUNTY	1	1	0
HCPS BURNEY ELEM H.O.S.T.	PLANT CITY	HILLSBOROUGH COUNTY	3	3	0
HCPS BURNS MIDDLE H.O.S.T.	BRANDON	HILLSBOROUGH COUNTY	2	2	0
HCPS CAHOON HEAD START VPK	TAMPA	HILLSBOROUGH COUNTY	26	0	26
HCPS CAHOON MAGNET ELEM H.O.S.T.	TAMPA	HILLSBOROUGH COUNTY	24	24	0
HCPS CANNELLA PEEPS VPK	TAMPA	HILLSBOROUGH COUNTY	9	0	9
HCPS CANNELLA ELEM H.O.S.T.	TAMPA	HILLSBOROUGH COUNTY	18	18	0
HCPS CARROLLWOOD PEEPS VPK	TAMPA	HILLSBOROUGH COUNTY	8	0	8
HCPS CHIARAMONTE ELEM H.O.S.T.	TAMPA	HILLSBOROUGH COUNTY	9	9	0
HCPS CHILES ELEM H.O.S.T.	TAMPA	HILLSBOROUGH COUNTY	14	14	0
HCPS CHILES SUMMER VPK	TAMPA	HILLSBOROUGH COUNTY	77	0	77
HCPS CIMINO ELEM H.O.S.T.	VALRICO	HILLSBOROUGH COUNTY	7	7	0
HCPS CIMINO PEEPS VPK	VALRICO	HILLSBOROUGH COUNTY	8	0	8
HCPS CITRUS PARK PEEPS/VPK	TAMPA	HILLSBOROUGH COUNTY	8	0	8
HCPS CLAIR MEL ELEM H.O.S.T.	TAMPA	HILLSBOROUGH COUNTY	25	25	0
HCPS CLAIR MEL HEAD START VPK	TAMPA	HILLSBOROUGH COUNTY	22	0	22
HCPS CLARK ELEM H.O.S.T.	TAMPA	HILLSBOROUGH COUNTY	16	16	0
HCPS CLAYWELL ELEM H.O.S.T.	TAMPA	HILLSBOROUGH COUNTY	9	9	0
HCPS CLAYWELL PEEPS VPK	TAMPA	HILLSBOROUGH COUNTY	9	0	9
HCPS CLEVELAND ELEM H.O.S.T.	TAMPA	HILLSBOROUGH COUNTY	32	32	0
HCPS CLEVELAND SUMMER VPK	TAMPA	HILLSBOROUGH COUNTY	22	0	22
HCPS COLLINS ELEM H.O.S.T.	RIVERVIEW	HILLSBOROUGH COUNTY	9	9	0
HCPS COLSON ELEM H.O.S.T.	SEFFNER	HILLSBOROUGH COUNTY	15	15	0
HCPS CORK ELEM H.O.S.T.	PLANT CITY	HILLSBOROUGH COUNTY	11	11	0
HCPS CORK MIGRANT VPK	PLANT CITY	HILLSBOROUGH COUNTY	20	0	20
HCPS CORR ELEM H.O.S.T.	GIBSONTON	HILLSBOROUGH COUNTY	12	12	0
HCPS CRESTWOOD ELEM H.O.S.T.	TAMPA	HILLSBOROUGH COUNTY	27	27	0
HCPS CYPRESS CREEK ELEM H.O.S.T.	RUSKIN	HILLSBOROUGH COUNTY	10	10	0
HCPS CYPRESS CREEK PEEPS VPK	RUSKIN	HILLSBOROUGH COUNTY	8	0	8
HCPS CYPRESS CREEK SUMMER VPK	RUSKIN	HILLSBOROUGH COUNTY	85	0	85
HCPS DAVIS ELEM H.O.S.T.	TAMPA	HILLSBOROUGH COUNTY	8	8	0
HCPS DEER PARK ELEM H.O.S.T.	TAMPA	HILLSBOROUGH COUNTY	4	4	0
HCPS DICKENSON ELEM H.O.S.T.	TAMPA	HILLSBOROUGH COUNTY	22	22	0
HCPS DICKENSON HEAD START VPK	TAMPA	HILLSBOROUGH COUNTY	19	0	19
HCPS DOBY ELEM H.O.S.T.	APOLLO BEACH	HILLSBOROUGH COUNTY	11	11	0
HCPS DOBY PEEPS VPK	APOLLO BEACH	HILLSBOROUGH COUNTY	9	0	9
HCPS DOVER ELEM H.O.S.T.	DOVER	HILLSBOROUGH COUNTY	16	16	0
HCPS DOVER HEAD START VPK	DOVER	HILLSBOROUGH COUNTY	20	0	20
HCPS DUNBAR MAGNET ELEM H.O.S.T.	TAMPA	HILLSBOROUGH COUNTY	9	9	0
HCPS EDISON ELEMENTARY H.O.S.T.	TAMPA	HILLSBOROUGH COUNTY	14	14	0
HCPS EDISON HEAD START VPK	TAMPA	HILLSBOROUGH COUNTY	20	0	20
HCPS EDISON SUMMER VPK	TAMPA	HILLSBOROUGH COUNTY	24	0	24
HCPS EGYPT LAKE ELEM H.O.S.T.	TAMPA	HILLSBOROUGH COUNTY	10	10	0
HCPS EGYPT LAKE HEAD START VPK	TAMPA	HILLSBOROUGH COUNTY	21	0	21
HCPS EISENHOWER MIDDLE H.O.S.T.	GIBSONTON	HILLSBOROUGH COUNTY	2	2	0
HCPS ESSRIG PEEPS/VPK	TAMPA	HILLSBOROUGH COUNTY	9	0	9
HCPS FERRELL MAGNET MIDDLE H.O.S.T.	TAMPA	HILLSBOROUGH COUNTY	3	3	0
HCPS FISHHAWK CREEK ELEM H.O.S.T.	LITHIA	HILLSBOROUGH COUNTY	6	6	0
HCPS FOLSOM ELEM H.O.S.T.	THONOTOSASSA	HILLSBOROUGH COUNTY	23	23	0
HCPS FOSTER ELEM H.O.S.T.	TAMPA	HILLSBOROUGH COUNTY	15	15	0
HCPS FRANKLIN MAGNET MIDDLE H.O.S.T.	TAMPA	HILLSBOROUGH COUNTY	2	2	0
HCPS FROST HEAD START VPK	RIVERVIEW	HILLSBOROUGH COUNTY	20	0	20
HCPS GIBSONTON ELEM H.O.S.T.	GIBSONTON	HILLSBOROUGH COUNTY	8	8	0
HCPS GIBSONTON HEAD START VPK	GIBSONTON	HILLSBOROUGH COUNTY	20	0	20
HCPS GIUNTA MIDDLE H.O.S.T.	RIVERVIEW	HILLSBOROUGH COUNTY	1	1	0



Provider Name	City	County	Children Served		
			Total	School Readiness	VPK
HCPS GORRIE SUMMER VPK	TAMPA	HILLSBOROUGH COUNTY	57	0	57
HCPS GRAHAM ELEMENTARY H.O.S.T.	TAMPA	HILLSBOROUGH COUNTY	9	9	0
HCPS GRAHAM HEAD START	TAMPA	HILLSBOROUGH COUNTY	22	0	22
HCPS GRAHAM SUMMER VPK	TAMPA	HILLSBOROUGH COUNTY	21	0	21
HCPS GRECO MIDDLE H.O.S.T.	TEMPLE TERRACE	HILLSBOROUGH COUNTY	3	3	0
HCPS HAMMOND ELEMENTARY H.O.S.T.	ODESSA	HILLSBOROUGH COUNTY	9	9	0
HCPS HERITAGE ELEM H.O.S.T.	TAMPA	HILLSBOROUGH COUNTY	10	10	0
HCPS HERITAGE PEEPS VPK	TAMPA	HILLSBOROUGH COUNTY	8	0	8
HCPS HILL MIDDLE H.O.S.T.	TAMPA	HILLSBOROUGH COUNTY	2	2	0
HCPS HUNTER'S GREEN ELEM H.O.S.T.	TAMPA	HILLSBOROUGH COUNTY	15	15	0
HCPS HUNTER'S GREEN PEEPS VPK	TAMPA	HILLSBOROUGH COUNTY	16	0	16
HCPS JACKSON ELEM H.O.S.T.	PLANT CITY	HILLSBOROUGH COUNTY	1	1	0
HCPS JAMES ELEM H.O.S.T.	TAMPA	HILLSBOROUGH COUNTY	34	34	0
HCPS JUST ELEM H.O.S.T.	TAMPA	HILLSBOROUGH COUNTY	5	5	0
HCPS JUST HEAD START VPK	TAMPA	HILLSBOROUGH COUNTY	20	0	20
HCPS JUST SUMMER VPK	TAMPA	HILLSBOROUGH COUNTY	21	0	21
HCPS KENLY ELEM H.O.S.T.	TAMPA	HILLSBOROUGH COUNTY	19	19	0
HCPS KENLY HEAD START	TAMPA	HILLSBOROUGH COUNTY	21	0	21
HCPS KIMBELL ELEM H.O.S.T.	TAMPA	HILLSBOROUGH COUNTY	42	42	0
HCPS KINGSWOOD ELEM H.O.S.T.	BRANDON	HILLSBOROUGH COUNTY	17	17	0
HCPS KNIGHTS ELEM H.O.S.T.	PLANT CITY	HILLSBOROUGH COUNTY	14	14	0
HCPS KNIGHTS HEAD START VPK	PLANT CITY	HILLSBOROUGH COUNTY	20	0	20
HCPS KNIGHTS SCHOOL YEAR VPK	PLANT CITY	HILLSBOROUGH COUNTY	21	0	21
HCPS LAKE MAGDALENE ELEM H.O.S.T.	TAMPA	HILLSBOROUGH COUNTY	6	6	0
HCPS LAKE MAGDALENE PEEPS/VPK	TAMPA	HILLSBOROUGH COUNTY	19	0	19
HCPS LAMB ELEMENTARY H.O.S.T.	TAMPA	HILLSBOROUGH COUNTY	20	20	0
HCPS LANIER ELEM H.O.S.T.	TAMPA	HILLSBOROUGH COUNTY	12	12	0
HCPS LEE MAGNET ELEM. H.O.S.T.	TAMPA	HILLSBOROUGH COUNTY	10	10	0
HCPS LETO LITTLE SCHOOL	TAMPA	HILLSBOROUGH COUNTY	7	0	7
HCPS LEWIS ELEM H.O.S.T.	TEMPLE TERRACE	HILLSBOROUGH COUNTY	22	22	0
HCPS LINCOLN ELEM H.O.S.T.	PLANT CITY	HILLSBOROUGH COUNTY	3	3	0
HCPS LINCOLN MAGNET HEAD START VPK	PLANT CITY	HILLSBOROUGH COUNTY	20	0	20
HCPS LITHIA SPRINGS ELEM H.O.S.T.	VALRICO	HILLSBOROUGH COUNTY	6	6	0
HCPS LOCKHART ELEM. H.O.S.T.	TAMPA	HILLSBOROUGH COUNTY	27	27	0
HCPS LOCKHART HEAD START VPK	TAMPA	HILLSBOROUGH COUNTY	20	0	20
HCPS LOMAX MAGNET ELEM H.O.S.T.	TAMPA	HILLSBOROUGH COUNTY	18	18	0
HCPS LOPEZ ELEM H.O.S.T.	SEFFNER	HILLSBOROUGH COUNTY	18	18	0
HCPS LOWRY ELEM H.O.S.T.	TAMPA	HILLSBOROUGH COUNTY	4	4	0
HCPS LUTZ ELEM H.O.S.T.	LUTZ	HILLSBOROUGH COUNTY	10	10	0
HCPS LUTZ PEEPS/VPK	LUTZ	HILLSBOROUGH COUNTY	9	0	9
HCPS MABRY ELEM H.O.S.T.	TAMPA	HILLSBOROUGH COUNTY	7	7	0
HCPS MACFARLANE MAGNET ELEM. H.O.S.T.	TAMPA	HILLSBOROUGH COUNTY	5	5	0
HCPS MANGO ELEM H.O.S.T.	SEFFNER	HILLSBOROUGH COUNTY	38	38	0
HCPS MANGO HEAD START VPK	SEFFNER	HILLSBOROUGH COUNTY	21	0	21
HCPS MANGO SUMMER VPK	SEFFNER	HILLSBOROUGH COUNTY	33	0	33
HCPS MANISCALCO ELEM H.O.S.T.	LUTZ	HILLSBOROUGH COUNTY	9	9	0
HCPS MANN MIDDLE H.O.S.T	BRANDON	HILLSBOROUGH COUNTY	1	1	0
HCPS MCDONALD ELEM H.O.S.T.	SEFFNER	HILLSBOROUGH COUNTY	8	8	0
HCPS MCDONALD PEEPS/VPK	SEFFNER	HILLSBOROUGH COUNTY	8	0	8
HCPS MCKITRICK ELEM H.O.S.T.	LUTZ	HILLSBOROUGH COUNTY	3	3	0
HCPS MENDENHALL ELEM H.O.S.T.	TAMPA	HILLSBOROUGH COUNTY	13	13	0
HCPS MILES ELEM H.O.S.T.	TAMPA	HILLSBOROUGH COUNTY	15	15	0
HCPS MILES PEEPS/VPK	TAMPA	HILLSBOROUGH COUNTY	11	0	11
HCPS MINTZ ELEM H.O.S.T.	BRANDON	HILLSBOROUGH COUNTY	19	19	0
HCPS MINTZ PEEPS/VPK	BRANDON	HILLSBOROUGH COUNTY	8	0	8
HCPS MINTZ SUMMER VPK	BRANDON	HILLSBOROUGH COUNTY	35	0	35
HCPS MITCHELL SUMMER VPK	TAMPA	HILLSBOROUGH COUNTY	233	0	233
HCPS MORT ELEM H.O.S.T.	TAMPA	HILLSBOROUGH COUNTY	14	14	0
HCPS MORT SUMMER VPK	TAMPA	HILLSBOROUGH COUNTY	49	0	49
HCPS MULLER ELEM H.O.S.T.	TAMPA	HILLSBOROUGH COUNTY	10	10	0

Provider Name	City	County	Children Served		
			Total	School Readiness	VPK
HCPS MULLER HEAD START VPK	TAMPA	HILLSBOROUGH COUNTY	20	0	20
HCPS MULLER SUMMER VPK PROGRAM	TAMPA	HILLSBOROUGH COUNTY	32	0	32
HCPS MULRENNAN MIDDLE H.O.S.T.	VALRICO	HILLSBOROUGH COUNTY	3	3	0
HCPS NELSON PEEPS/VPK	DOVER	HILLSBOROUGH COUNTY	8	0	8
HCPS NORTHWEST PEEPS/VPK	TAMPA	HILLSBOROUGH COUNTY	8	0	8
HCPS OAK GROVE ELEM H.O.S.T.	TAMPA	HILLSBOROUGH COUNTY	34	34	0
HCPS OAK GROVE PEEPS/VPK	TAMPA	HILLSBOROUGH COUNTY	9	0	9
HCPS OAK PARK ELEM H.O.S.T.	TAMPA	HILLSBOROUGH COUNTY	6	6	0
HCPS ORANGE GROVE MAGNET MID H.O.S.T.	TAMPA	HILLSBOROUGH COUNTY	2	2	0
HCPS PALM RIVER ELEM H.O.S.T.	TAMPA	HILLSBOROUGH COUNTY	16	16	0
HCPS PINECREST ELEM PEEPS/VPK	LITHIA	HILLSBOROUGH COUNTY	8	0	8
HCPS PLANT CITY HIGH LITTLE SCHOOL	PLANT CITY	HILLSBOROUGH COUNTY	6	0	6
HCPS POTTER ELEM H.O.S.T.	TAMPA	HILLSBOROUGH COUNTY	11	11	0
HCPS POTTER HEAD START VPK	TAMPA	HILLSBOROUGH COUNTY	44	0	44
HCPS POTTER SUMMER VPK	TAMPA	HILLSBOROUGH COUNTY	45	0	45
HCPS PRIDE ELEM H.O.S.T.	TAMPA	HILLSBOROUGH COUNTY	15	15	0
HCPS PROGRESS VILLAGE MID H.O.S.T.	TAMPA	HILLSBOROUGH COUNTY	1	1	0
HCPS RAMPOLLO DOWNTOWN K-8TH H.O.S.T.	TAMPA	HILLSBOROUGH COUNTY	30	30	0
HCPS REDDICK ELEM H.O.S.T.	WIMAUMA	HILLSBOROUGH COUNTY	20	20	0
HCPS REDDICK PEEPS	WIMAUMA	HILLSBOROUGH COUNTY	9	0	9
HCPS REDDICK SUMMER VPK	WIMAUMA	HILLSBOROUGH COUNTY	22	0	22
HCPS RIVERHILLS PEEPS/VPK	TEMPLE TERRACE	HILLSBOROUGH COUNTY	8	0	8
HCPS RIVERVIEW ELEM H.O.S.T.	RIVERVIEW	HILLSBOROUGH COUNTY	6	6	0
HCPS RIVERVIEW PEEPS/VPK	RIVERVIEW	HILLSBOROUGH COUNTY	9	0	9
HCPS ROBINSON ELEM H.O.S.T.	PLANT CITY	HILLSBOROUGH COUNTY	8	8	0
HCPS ROBINSON PEEPS/VPK	PLANT CITY	HILLSBOROUGH COUNTY	9	0	9
HCPS ROBLES ELEM H.O.S.T.	TAMPA	HILLSBOROUGH COUNTY	32	32	0
HCPS ROBLES HEAD START VPK	TAMPA	HILLSBOROUGH COUNTY	22	0	22
HCPS RODGERS MIDDLE H.O.S.T.	RIVERVIEW	HILLSBOROUGH COUNTY	1	1	0
HCPS ROLAND PARK MAGNET K-8TH H.O.S.T.	TAMPA	HILLSBOROUGH COUNTY	23	23	0
HCPS RUSKIN ELEM H.O.S.T.	RUSKIN	HILLSBOROUGH COUNTY	10	10	0
HCPS SANCHEZ FULL SERVICE HEAD STRT VPK	TAMPA	HILLSBOROUGH COUNTY	20	0	20
HCPS SCHMIDT ELEM H.O.S.T.	BRANDON	HILLSBOROUGH COUNTY	21	21	0
HCPS SCHMIDT PEEPS/VPK	BRANDON	HILLSBOROUGH COUNTY	8	0	8
HCPS SCHMIDT SUMMER VPK	BRANDON	HILLSBOROUGH COUNTY	30	0	30
HCPS SCHWARZKOPF ELEM H.O.S.T.	LUTZ	HILLSBOROUGH COUNTY	2	2	0
HCPS SCHWARZKOPF PEEPS/VPK	LUTZ	HILLSBOROUGH COUNTY	8	0	8
HCPS SEMINOLE ELEM H.O.S.T.	TAMPA	HILLSBOROUGH COUNTY	25	25	0
HCPS SEMINOLE PEEPS/VPK	TAMPA	HILLSBOROUGH COUNTY	8	0	8
HCPS SESSUMS VPK	RIVERVIEW	HILLSBOROUGH COUNTY	30	0	30
HCPS SHAW ELEM H.O.S.T.	TAMPA	HILLSBOROUGH COUNTY	10	10	0
HCPS SHAW SUMMER VPK	TAMPA	HILLSBOROUGH COUNTY	56	0	56
HCPS SHEEHY ELEM H.O.S.T.	TAMPA	HILLSBOROUGH COUNTY	45	45	0
HCPS SHEEHY HEAD START VPK	TAMPA	HILLSBOROUGH COUNTY	21	0	21
HCPS SHEEHY SUMMER VPK	TAMPA	HILLSBOROUGH COUNTY	77	0	77
HCPS SHORE MAGNET ELEM H.O.S.T.	TAMPA	HILLSBOROUGH COUNTY	26	26	0
HCPS SPRINGHEAD ELEM H.O.S.T.	PLANT CITY	HILLSBOROUGH COUNTY	15	15	0
HCPS SPRINGHEAD HEAD START VPK	PLANT CITY	HILLSBOROUGH COUNTY	21	0	21
HCPS STEWART MIDDLE H.O.S.T.	TAMPA	HILLSBOROUGH COUNTY	1	1	0
HCPS STOWERS ELEM H.O.S.T.	LITHIA	HILLSBOROUGH COUNTY	7	7	0
HCPS SULPHUR SPRINGS SUMMER VPK	TAMPA	HILLSBOROUGH COUNTY	81	0	81
HCPS SUMMERFIELD CROSSNG ELEM H.O.S.T.	RIVERVIEW	HILLSBOROUGH COUNTY	16	16	0
HCPS SUMMERFIELD ELEM H.O.S.T.	RIVERVIEW	HILLSBOROUGH COUNTY	15	15	0
HCPS SUMMERFIELD SUMMER VPK	RIVERVIEW	HILLSBOROUGH COUNTY	30	0	30
HCPS SYMMES ELEM H.O.S.T.	RIVERVIEW	HILLSBOROUGH COUNTY	12	12	0
HCPS TAMPA BAY BLVD ELEM H.O.S.T.	TAMPA	HILLSBOROUGH COUNTY	24	24	0
HCPS TAMPA BAY BLVD HEAD START VPK	TAMPA	HILLSBOROUGH COUNTY	21	0	21
HCPS TEMPLE TERRACE ELEM H.O.S.T.	TEMPLE TERRACE	HILLSBOROUGH COUNTY	21	21	0
HCPS THOMPSON ELEM H.O.S.T.	RUSKIN	HILLSBOROUGH COUNTY	14	14	0

Provider Name	City	County	Children Served		
			Total	School Readiness	VPK
HCPS THONOTOSASSA ELEMENTARY H.O.S.T.	THONOTOSASSA	HILLSBOROUGH COUNTY	11	11	0
HCPS TINKER ELEM H.O.S.T.	MACDILL AFB	HILLSBOROUGH COUNTY	1	1	0
HCPS TOMLIN MIDDLE H.O.S.T.	PLANT CITY	HILLSBOROUGH COUNTY	2	2	0
HCPS TRAPNELL ELEM H.O.S.T.	PLANT CITY	HILLSBOROUGH COUNTY	8	8	0
HCPS TURKEY CREEK MIDDLE H.O.S.T.	PLANT CITY	HILLSBOROUGH COUNTY	1	1	0
HCPS TURNER ELEM H.O.S.T.	TAMPA	HILLSBOROUGH COUNTY	6	6	0
HCPS USF PATEL ELEM H.O.S.T.	TAMPA	HILLSBOROUGH COUNTY	13	13	0
HCPS WALDEN LAKE ELEM H.O.S.T.	PLANT CITY	HILLSBOROUGH COUNTY	6	6	0
HCPS WALKER MIDDLE H.O.S.T.	ODESSA	HILLSBOROUGH COUNTY	1	1	0
HCPS WASHINGTON ELEM H.O.S.T.	TAMPA	HILLSBOROUGH COUNTY	10	10	0
HCPS WASHINGTON HEAD START VPK	TAMPA	HILLSBOROUGH COUNTY	22	0	22
HCPS WEST SHORE ELEM H.O.S.T.	TAMPA	HILLSBOROUGH COUNTY	14	14	0
HCPS WEST TAMPA ELEM H.O.S.T.	TAMPA	HILLSBOROUGH COUNTY	13	13	0
HCPS WESTCHASE ELEM H.O.S.T.	TAMPA	HILLSBOROUGH COUNTY	4	4	0
HCPS WILLIAMS MIDDLE H.O.S.T.	TAMPA	HILLSBOROUGH COUNTY	3	3	0
HCPS WILSON ELEM H.O.S.T.	PLANT CITY	HILLSBOROUGH COUNTY	12	12	0
HCPS WIMAUMA ELEM H.O.S.T.	WIMAUMA	HILLSBOROUGH COUNTY	7	7	0
HCPS WIMAUMA SUMMER VPK	WIMAUMA	HILLSBOROUGH COUNTY	24	0	24
HCPS WITTER ELEM H.O.S.T.	TAMPA	HILLSBOROUGH COUNTY	24	24	0
HCPS WITTER HEAD START VPK	TAMPA	HILLSBOROUGH COUNTY	23	0	23
HCPS WITTER IPEEPS	TAMPA	HILLSBOROUGH COUNTY	9	0	9
HCPS WOODBRIDGE ELEM H.O.S.T.	TAMPA	HILLSBOROUGH COUNTY	12	12	0
HCPS WOODBRIDGE PEEPS VPK	TAMPA	HILLSBOROUGH COUNTY	8	0	8
HCPS YATES ELEM H.O.S.T.	BRANDON	HILLSBOROUGH COUNTY	9	9	0
HCPS YOUNG MIDDLE H.O.S.T.	TAMPA	HILLSBOROUGH COUNTY	3	3	0
HEADLEY, KAREN A	TAMPA	HILLSBOROUGH COUNTY	2	2	0
HEAVEN SENT	BRANDON	HILLSBOROUGH COUNTY	54	38	16
HEBREW ACADEMY	TAMPA	HILLSBOROUGH COUNTY	17	13	4
HECK, VALDINE T	TAMPA	HILLSBOROUGH COUNTY	15	10	5
HELPING HAND DAY NURSERY INC. II	TAMPA	HILLSBOROUGH COUNTY	95	74	21
HELPING HAND DAY NURSERY IV	TAMPA	HILLSBOROUGH COUNTY	38	23	15
HERNANDEZ, AIXA R	TAMPA	HILLSBOROUGH COUNTY	1	1	0
HERNANDEZ-SILVA, MIRIAN R	TAMPA	HILLSBOROUGH COUNTY	5	5	0
HERRERA-ANDARCIO, KATIA	TAMPA	HILLSBOROUGH COUNTY	5	5	0
HICKMAN, SHEILA L	TAMPA	HILLSBOROUGH COUNTY	9	9	0
HILLSBOROUGH BAPTIST SCHOOL	SEFFNER	HILLSBOROUGH COUNTY	43	24	19
HILLSDALE PRESCHOOL & ACADEMY	TAMPA	HILLSBOROUGH COUNTY	40	0	40
HOLMES, MARIAN F	TAMPA	HILLSBOROUGH COUNTY	30	30	0
HOLY TRINITY LUTHERAN SCHOOL	TAMPA	HILLSBOROUGH COUNTY	65	0	65
HOME AWAY FROM HOME LEARNING CENTER #2	TAMPA	HILLSBOROUGH COUNTY	20	20	0
HOME AWAY FROM HOME LEARNING CENTER 1	TAMPA	HILLSBOROUGH COUNTY	83	83	0
HORIZON PRESCHOOL	VALRICO	HILLSBOROUGH COUNTY	23	1	22
HUDGINS, SHEILA C	TAMPA	HILLSBOROUGH COUNTY	3	3	0
HUMPTY DUMPTY ACADEMY	TAMPA	HILLSBOROUGH COUNTY	75	63	12
HUNDLEY, KENDRA T	RIVERVIEW	HILLSBOROUGH COUNTY	4	4	0
IBARRA, ENRIQUETA	PLANT CITY	HILLSBOROUGH COUNTY	4	4	0
IMMANUEL LUTHERAN PRESCHOOL AND SCHOOL	BRANDON	HILLSBOROUGH COUNTY	40	0	40
INCARNATION CATHOLIC SCHOOL	TAMPA	HILLSBOROUGH COUNTY	16	0	16
INDA, DAYAMI	TAMPA	HILLSBOROUGH COUNTY	10	10	0
INDEPENDENT LIVING, INC.	TAMPA	HILLSBOROUGH COUNTY	1	0	1
ISTABA PEACE ACADEMY	TAMPA	HILLSBOROUGH COUNTY	43	18	25
IT'S KIDZ TIME OF RIVERVIEW INC	RIVERVIEW	HILLSBOROUGH COUNTY	94	51	43
ITURRIAGA-SUAREZ, DINORAH	TAMPA	HILLSBOROUGH COUNTY	2	2	0
JACKSON, ELIZABETH D	TAMPA	HILLSBOROUGH COUNTY	5	5	0
JACKSON, ELLA J	TAMPA	HILLSBOROUGH COUNTY	11	11	0
JACKSON, HARRIETTE D	TAMPA	HILLSBOROUGH COUNTY	6	6	0
JACKSON, MARIE	TAMPA	HILLSBOROUGH COUNTY	21	21	0
JACKSON, MICHELLE	TAMPA	HILLSBOROUGH COUNTY	10	10	0
JAMES, BEULAH M	TAMPA	HILLSBOROUGH COUNTY	3	3	0
JEFFERY, AKILA I	TAMPA	HILLSBOROUGH COUNTY	13	13	0

Provider Name	City	County	Children Served		
			Total	School Readiness	VPK
JEWISH COMMUNITY CENTER PRESCHOOL NORTH	TAMPA	HILLSBOROUGH COUNTY	45	0	45
JEWISH COMMUNITY CENTER PRESCHOOL SOUTH	TAMPA	HILLSBOROUGH COUNTY	31	0	31
JIMENEZ-ESPONDA, DAISY	TAMPA	HILLSBOROUGH COUNTY	5	5	0
JIMENEZ-FRIAS, ODEIMYS	TAMPA	HILLSBOROUGH COUNTY	1	1	0
JIMENEZ-PARYLAK, KLAUDIA	TAMPA	HILLSBOROUGH COUNTY	10	10	0
JONES, ETHEL L	TAMPA	HILLSBOROUGH COUNTY	19	19	0
JONES, FRANKIE D	TAMPA	HILLSBOROUGH COUNTY	9	9	0
JONES, JUNE L	TAMPA	HILLSBOROUGH COUNTY	14	10	4
JONES, OLETHA L	TAMPA	HILLSBOROUGH COUNTY	4	4	0
JONES, PAMELA ANN	SEFFNER	HILLSBOROUGH COUNTY	11	11	0
JORDAN, JEWELL V	BRANDON	HILLSBOROUGH COUNTY	1	1	0
JORDAN, KATHERINE M	TAMPA	HILLSBOROUGH COUNTY	22	22	0
JUNCO-CRUZ, BENITA C	TAMPA	HILLSBOROUGH COUNTY	4	4	0
JUST FOR TOTS ACADEMY	TAMPA	HILLSBOROUGH COUNTY	116	74	42
KEYSTONE CHILDREN'S ACADEMY	ODESSA	HILLSBOROUGH COUNTY	26	10	16
KEYSTONE CHRISTIAN PRSCH AND PMO PROGRAM	ODESSA	HILLSBOROUGH COUNTY	49	0	49
KID PRO THERAPY SERVICES, INC.	TAMPA	HILLSBOROUGH COUNTY	1	0	1
KID'S COMMUNITY COLLEGE RIVERVIEW SOUTH	RIVERVIEW	HILLSBOROUGH COUNTY	76	13	63
KID'S COMMUNITY COLLEGE SOUTHEAST	RIVERVIEW	HILLSBOROUGH COUNTY	45	0	45
KID'S COMMUNITY COLLEGE-LAKE ST CHARLES	RIVERVIEW	HILLSBOROUGH COUNTY	74	35	39
KIDDIE ACADEMY OF CARROLLWOOD	TAMPA	HILLSBOROUGH COUNTY	75	51	24
KIDDIE CAMPUS UNIVERSITY	LUTZ	HILLSBOROUGH COUNTY	124	80	44
KIDDIE COUNTRY	TAMPA	HILLSBOROUGH COUNTY	11	0	11
KIDDIE KOLLEGE BABY WORLD	TAMPA	HILLSBOROUGH COUNTY	22	22	0
KIDDIE KOLLEGE DAY CARE CENTER	TAMPA	HILLSBOROUGH COUNTY	140	93	47
KIDS CLUB EARLY LEARNING CENTER LLC	PLANT CITY	HILLSBOROUGH COUNTY	116	101	15
KIDS CLUBHOUSE INC	TAMPA	HILLSBOROUGH COUNTY	90	65	25
KIDS CORNER ACADEMY	TAMPA	HILLSBOROUGH COUNTY	48	27	21
KIDS DOING BUSINESS ACADEMY LLC	TAMPA	HILLSBOROUGH COUNTY	65	65	0
KIDS R KIDS #6 FL	TAMPA	HILLSBOROUGH COUNTY	82	0	82
KIDS R KIDS SOUTHSORE	GIBSONTON	HILLSBOROUGH COUNTY	184	48	136
KIDS R TOPS, INC.	BRANDON	HILLSBOROUGH COUNTY	177	101	76
KIDS RAINBOW LEARNING CENTER	TAMPA	HILLSBOROUGH COUNTY	40	40	0
KIDS WORLD	PLANT CITY	HILLSBOROUGH COUNTY	12	4	8
KIDS WORLD	PLANT CITY	HILLSBOROUGH COUNTY	17	17	0
KIDS ZONE LEARNING CENTER	TAMPA	HILLSBOROUGH COUNTY	40	19	21
KIDZ COVE II LEARNING CENTER INC.	TAMPA	HILLSBOROUGH COUNTY	91	75	16
KIDZ IN PLAY CHILD CARE CENTER	TAMPA	HILLSBOROUGH COUNTY	54	43	11
KINDER KOUNTRY	DOVER	HILLSBOROUGH COUNTY	53	35	18
KINDER CARE LEARNING CENTER	WESLEY CHAPEL	PASCO COUNTY	3	3	0
KINDER CARE LEARNING CENTER #342 WEBB	TAMPA	HILLSBOROUGH COUNTY	84	47	37
KINDER CARE LEARNING CENTER 1254	TEMPLE TERRACE	HILLSBOROUGH COUNTY	147	125	22
KINDER CARE LEARNING CENTER GUNN HWY	TAMPA	HILLSBOROUGH COUNTY	73	51	22
KINDER CARE LEARNING CENTER PARSONS	SEFFNER	HILLSBOROUGH COUNTY	151	117	34
KINDER CARE LEARNING CENTER PREMIERE	TAMPA	HILLSBOROUGH COUNTY	38	25	13
KINDER CARE LEARNING CENTER TAMPA PALMS	TAMPA	HILLSBOROUGH COUNTY	94	66	28
KINDER CARE LEARNING CENTER TIMBERLANE	PLANT CITY	HILLSBOROUGH COUNTY	134	68	66
KINDER CARE LEARNING CTR 1139 BELL SHOALS	VALRICO	HILLSBOROUGH COUNTY	88	57	31
KING'S KIDS ACADEMY OF HEALTH SCIENCES	TAMPA	HILLSBOROUGH COUNTY	2	2	0
KING'S KIDS CHRISTIAN ACADEMY OF TPA INC	TAMPA	HILLSBOROUGH COUNTY	34	20	14
KINGS AVENUE CHRISTIAN SCHOOL	BRANDON	HILLSBOROUGH COUNTY	32	32	0
KOUASSI, BETTY NICOLAS	TAMPA	HILLSBOROUGH COUNTY	3	3	0
KRESTVIEW ACADEMY	RIVERVIEW	HILLSBOROUGH COUNTY	14	0	14
LA PETITE ACADEMY BLOOMINGDALE	BRANDON	HILLSBOROUGH COUNTY	87	61	26
LA PETITE ACADEMY CRISTINA	RIVERVIEW	HILLSBOROUGH COUNTY	172	137	35
LA PETITE ACADEMY GREENHOLLOW	VALRICO	HILLSBOROUGH COUNTY	125	107	18
LA PETITE ACADEMY HUMPHREY	TAMPA	HILLSBOROUGH COUNTY	111	87	24
LA PETITE ACADEMY MAPLEDALE	TAMPA	HILLSBOROUGH COUNTY	80	52	28
LA PETITE ACADEMY PAULA	TAMPA	HILLSBOROUGH COUNTY	162	121	41
LA PETITE ACADEMY REGENTS PARK	TAMPA	HILLSBOROUGH COUNTY	163	116	47

Provider Name	City	County	Children Served		
			Total	School Readiness	VPK
LA PETITE ACADEMY SOUTH VILLAGE	TAMPA	HILLSBOROUGH COUNTY	106	74	32
LA PETITE ACADEMY WINDHORST	BRANDON	HILLSBOROUGH COUNTY	107	85	22
LAKE CARROLL BAPTIST LEARNING CENTER	TAMPA	HILLSBOROUGH COUNTY	83	47	36
LAKE MAGDALENE ACADEMY	TAMPA	HILLSBOROUGH COUNTY	31	16	15
LAKE MAGDALENE UMC ECC	TAMPA	HILLSBOROUGH COUNTY	69	0	69
LAND OF LEARNING ACADEMY	TAMPA	HILLSBOROUGH COUNTY	219	77	142
LAUX, TATIANA V	TAMPA	HILLSBOROUGH COUNTY	2	2	0
LAZO, CELIA M	TAMPA	HILLSBOROUGH COUNTY	2	2	0
LEARN & GROW PRE-SCHOOL CORP.	VALRICO	HILLSBOROUGH COUNTY	18	8	10
LEARNING GATE INC	LUTZ	HILLSBOROUGH COUNTY	20	0	20
LEE, CASSANDRA	TEMPLE TERRACE	HILLSBOROUGH COUNTY	4	4	0
LEWIS, BEVERLY DUKES	TAMPA	HILLSBOROUGH COUNTY	3	3	0
LEWIS, LEOLA	TAMPA	HILLSBOROUGH COUNTY	1	1	0
LEWIS, SHERRIA	VALRICO	HILLSBOROUGH COUNTY	9	9	0
LEYVA-MANZANARES, YURINA	TAMPA	HILLSBOROUGH COUNTY	3	3	0
LIBERTY CHRISTIAN SCHOOL	PLANT CITY	HILLSBOROUGH COUNTY	8	0	8
LIL EXPLORERS CHRISTIAN CTR INC	PLANT CITY	HILLSBOROUGH COUNTY	211	175	36
LIL MUNCHKINS LEARNING CENTER INC	PLANT CITY	HILLSBOROUGH COUNTY	80	80	0
LIL PALS	TAMPA	HILLSBOROUGH COUNTY	177	151	26
LIMEHOUSE, JANICE D	TAMPA	HILLSBOROUGH COUNTY	3	3	0
LIMONA VILLAGE CHAPEL CHILDREN'S CENTER	BRANDON	HILLSBOROUGH COUNTY	52	0	52
LINDA'S DAY CARE CENTER	TAMPA	HILLSBOROUGH COUNTY	45	32	13
LINDA'S LITTLE PEOPLE, INC.	PLANT CITY	HILLSBOROUGH COUNTY	66	55	11
LITHIA LEARNING CENTER D/B/A KIDS R K #8	VALRICO	HILLSBOROUGH COUNTY	106	19	87
LITTLE ACHIEVERS PRESCHOOL	TAMPA	HILLSBOROUGH COUNTY	77	70	7
LITTLE BIG WORLD 2	TAMPA	HILLSBOROUGH COUNTY	44	44	0
LITTLE CARE BEARS LEARNING AND CCC	TAMPA	HILLSBOROUGH COUNTY	78	78	0
LITTLE EAGLES CHRISTIAN PRESCHOOL	TAMPA	HILLSBOROUGH COUNTY	66	66	0
LITTLE GIANTS LEARNING ACADEMY	RIVERVIEW	HILLSBOROUGH COUNTY	153	77	76
LITTLE GIANTS LEARNING ACADEMY SOUTH	RIVERVIEW	HILLSBOROUGH COUNTY	134	49	85
LITTLE HOUSE KINDER LEARNING CENTER	TAMPA	HILLSBOROUGH COUNTY	23	17	6
LITTLE STARS LEARNING ACADEMY INC.	BRANDON	HILLSBOROUGH COUNTY	49	38	11
LITTLE STEPS LEARNING ACADEMY	TAMPA	HILLSBOROUGH COUNTY	65	53	12
LITTLE STEPS LEARNING CENTER	TAMPA	HILLSBOROUGH COUNTY	85	61	24
LITTLE TEAM LEARNING ACADEMY	TAMPA	HILLSBOROUGH COUNTY	81	63	18
LITTLE WONDERS LEARNING CENTER	TAMPA	HILLSBOROUGH COUNTY	55	35	20
LIVINGSTON, CECELIA W	TAMPA	HILLSBOROUGH COUNTY	3	3	0
LIVINGSTONE ACADEMY	SEFFNER	HILLSBOROUGH COUNTY	1	1	0
LOLA'S CHILD CARE	TAMPA	HILLSBOROUGH COUNTY	99	87	12
LONG, RAYQUEL R	TAMPA	HILLSBOROUGH COUNTY	8	8	0
LOPEZ, JOHANA	TAMPA	HILLSBOROUGH COUNTY	13	13	0
LOVE & GLORY LEARNING CENTER INC.	TAMPA	HILLSBOROUGH COUNTY	83	75	8
LOVING ARMS KIDDIE ACADEMY	TAMPA	HILLSBOROUGH COUNTY	86	76	10
LOWE, MEGAN M	TAMPA	HILLSBOROUGH COUNTY	12	12	0
LUIS, KENIA	TAMPA	HILLSBOROUGH COUNTY	1	1	0
LUIS, MIDIALA	TAMPA	HILLSBOROUGH COUNTY	1	1	0
LUJAN-TERRY, DAYLEI	TAMPA	HILLSBOROUGH COUNTY	4	4	0
LUTZ LEARNING CENTER INC	LUTZ	HILLSBOROUGH COUNTY	39	1	38
LUTZ PRE-PREP	LUTZ	HILLSBOROUGH COUNTY	59	1	58
MACDILL AFB CHILD DEVELOPMENT CENTER 1	MACDILL AFB	HILLSBOROUGH COUNTY	48	0	48
MACDILL AFB CHILD DEVELOPMENT CENTER 2	MACDILL AFB	HILLSBOROUGH COUNTY	91	0	91
MACHADO-CORREA, ELIZABETH	TAMPA	HILLSBOROUGH COUNTY	3	3	0
MADRAZO, YOLANDA	TAMPA	HILLSBOROUGH COUNTY	6	6	0
MAGIC KINDER DAYCARE LLC	LITHIA	HILLSBOROUGH COUNTY	8	2	6
MANHATTAN AVE U M CHURCH CHILD CARE CTR	TAMPA	HILLSBOROUGH COUNTY	20	14	6
MANIFESTATIONS EARLY CHILDCARE CENTER	TAMPA	HILLSBOROUGH COUNTY	144	144	0
MANN-WILLIAMS, EILEEN	TAMPA	HILLSBOROUGH COUNTY	5	5	0
MARINO, ESTHER	TAMPA	HILLSBOROUGH COUNTY	7	7	0
MARK, JENNIFER	TAMPA	HILLSBOROUGH COUNTY	7	7	0
MARTIN-SANTOS, IDARME M	TAMPA	HILLSBOROUGH COUNTY	6	6	0

Provider Name	City	County	Children Served		
			Total	School Readiness	VPK
MARTINEZ, DORAMYS	TAMPA	HILLSBOROUGH COUNTY	7	7	0
MARTINEZ, MABEL	TAMPA	HILLSBOROUGH COUNTY	6	6	0
MARTINEZ, YANELIS	TAMPA	HILLSBOROUGH COUNTY	4	4	0
MARY GO ROUND CHILD CARE CENTER	RIVERVIEW	HILLSBOROUGH COUNTY	49	15	34
MARY GO ROUND SOUTH POINTE	RIVERVIEW	HILLSBOROUGH COUNTY	61	17	44
MARY'S LITTLE LAMB PRESCHOOL INC	TAMPA	HILLSBOROUGH COUNTY	37	23	14
MASTRAPA, JUANA	TAMPA	HILLSBOROUGH COUNTY	4	4	0
MAYA NETPARK PRESCHOOL	TAMPA	HILLSBOROUGH COUNTY	262	189	73
MCCALISTER, LISHIA C	TAMPA	HILLSBOROUGH COUNTY	9	9	0
MCCOY, TRINA V	BRANDON	HILLSBOROUGH COUNTY	6	6	0
MCCUNE, MELANIE	LUTZ	HILLSBOROUGH COUNTY	5	0	5
MCDUFFIE, VANESSA N	VALRICO	HILLSBOROUGH COUNTY	31	31	0
MCGHIE, VERONICA E	BRANDON	HILLSBOROUGH COUNTY	7	7	0
MCLEAN, LAVERN ANN MARIE	WIMAUMA	HILLSBOROUGH COUNTY	1	1	0
MENDEZ, JUVERKIS J	TAMPA	HILLSBOROUGH COUNTY	6	6	0
MENENDEZ, ILEANA M	TAMPA	HILLSBOROUGH COUNTY	2	2	0
MENENDEZ, ODALIS	TAMPA	HILLSBOROUGH COUNTY	7	7	0
MESSIAH LUTHERAN CHURCH PRESCHOOL	TAMPA	HILLSBOROUGH COUNTY	22	0	22
METROPOLITAN MINISTRIES DBA PROMISE LAND	TAMPA	HILLSBOROUGH COUNTY	224	224	0
MEYER, ANTOINETTE LEA	RIVERVIEW	HILLSBOROUGH COUNTY	4	4	0
MILESTONE ACADEMY	TAMPA	HILLSBOROUGH COUNTY	36	36	0
MIRABAL, YENIA	TAMPA	HILLSBOROUGH COUNTY	2	2	0
MONTANO, ALBA R	TAMPA	HILLSBOROUGH COUNTY	1	1	0
MONTESSORI ACADEMY OF TAMPA BAY	TAMPA	HILLSBOROUGH COUNTY	35	35	0
MONTESSORI ACADEMY OF TEMPLE TERRACE	TEMPLE TERRACE	HILLSBOROUGH COUNTY	2	2	0
MONTESSORI EARLY LEARNING CENTER	TAMPA	HILLSBOROUGH COUNTY	49	0	49
MONTESSORI KIDS UNIVERSE BRANDON	BRANDON	HILLSBOROUGH COUNTY	10	0	10
MONTESSORI PREPARATORY SCHOOL OF T. T.	TEMPLE TERRACE	HILLSBOROUGH COUNTY	4	4	0
MONTGOMERY, ARETRINA T	TAMPA	HILLSBOROUGH COUNTY	9	9	0
MOORE, BEVERLY L	PLANT CITY	HILLSBOROUGH COUNTY	5	5	0
MORA-CARRILLO, NORYS	TAMPA	HILLSBOROUGH COUNTY	5	5	0
MORNING GLORY PRESCHOOL	RIVERVIEW	HILLSBOROUGH COUNTY	123	77	46
MORRIS, JUDY J	TAMPA	HILLSBOROUGH COUNTY	16	16	0
MOSLEY, TONYA P	TAMPA	HILLSBOROUGH COUNTY	8	8	0
MOTHER GOOSE PRESCHOOL	TAMPA	HILLSBOROUGH COUNTY	53	38	15
MOUNT CALVARY SEVENTH DAY ADVENTIST SCH	TAMPA	HILLSBOROUGH COUNTY	62	62	0
MOYA, MARITZA	TAMPA	HILLSBOROUGH COUNTY	15	15	0
MURDOCK, JAMESENA	TAMPA	HILLSBOROUGH COUNTY	6	6	0
MURPHY, G. DBA MURPHY'S CHILD DEV CENTER	TAMPA	HILLSBOROUGH COUNTY	13	13	0
MY LITTLE CHAMPIONS LEARNING CENTER	TAMPA	HILLSBOROUGH COUNTY	40	18	22
MY LITTLE GIANTS LEARNING CENTER II	TAMPA	HILLSBOROUGH COUNTY	49	27	22
NAPOLES, YOANNY I	TAMPA	HILLSBOROUGH COUNTY	10	10	0
NEAL, RAMONA K	TAMPA	HILLSBOROUGH COUNTY	14	14	0
NELSIE'S DAY CARE LEARNING CENTER	TAMPA	HILLSBOROUGH COUNTY	26	22	4
NEW FRIENDSHIP EDUCATION & CULTURE CTR	TAMPA	HILLSBOROUGH COUNTY	194	182	12
NEW HEAVEN LEARNING CENTER	TAMPA	HILLSBOROUGH COUNTY	23	13	10
NEW HOPE EARLY LEARNING	BRANDON	HILLSBOROUGH COUNTY	32	0	32
NEW JERUSALEM CHRISTIAN ACADEMY	SEFFNER	HILLSBOROUGH COUNTY	10	10	0
NEW JERUSALEM CHRISTIAN ACADEMY VPK	SEFFNER	HILLSBOROUGH COUNTY	45	0	45
NEWSOME, DENISE L	TAMPA	HILLSBOROUGH COUNTY	19	19	0
NEWTON, CAROLYN D	TAMPA	HILLSBOROUGH COUNTY	13	13	0
NEWTON, TAMBRA M	BRANDON	HILLSBOROUGH COUNTY	5	5	0
NEXT GENERATION KIDZ EARLY CDHD LRNG INC	TAMPA	HILLSBOROUGH COUNTY	49	49	0
NEXT GENERATION KIDZ EARLY CHD LRN CT 3	TAMPA	HILLSBOROUGH COUNTY	63	53	10
NIXON, ESTERZIE N	TAMPA	HILLSBOROUGH COUNTY	6	6	0
NOAH'S PRESCHOOL ACADEMY II	TAMPA	HILLSBOROUGH COUNTY	128	115	13
NUNEZ, LINET	TAMPA	HILLSBOROUGH COUNTY	5	5	0
NUNEZ, MARIA	TAMPA	HILLSBOROUGH COUNTY	3	3	0
OAK GROVE UNITED METHODIST SCHOOL	TAMPA	HILLSBOROUGH COUNTY	30	0	30

Provider Name	City	County	Children Served		
			Total	School Readiness	VPK
OLIVERA-CARABALLOSO, YENICE	TAMPA	HILLSBOROUGH COUNTY	4	4	0
ORIENT ROAD CHILD DEVELOPMENT CTR	TAMPA	HILLSBOROUGH COUNTY	159	144	15
OROZCO, DAYMI	TAMPA	HILLSBOROUGH COUNTY	5	5	0
ORTIZ, BEVERLY D	TAMPA	HILLSBOROUGH COUNTY	15	15	0
ORTIZ, PATRICIA	TEMPLE TERRACE	HILLSBOROUGH COUNTY	8	8	0
PAEZ-HERNANDEZ, IVONNE	TAMPA	HILLSBOROUGH COUNTY	8	8	0
PAEZ-PEREZ, MARLLA	TAMPA	HILLSBOROUGH COUNTY	15	15	0
PALMA CEIA ACADEMY INC	TAMPA	HILLSBOROUGH COUNTY	62	25	37
PANDA HUGS LEARNING CTR. - BRUCE B DOWNS	TAMPA	HILLSBOROUGH COUNTY	138	77	61
PARADISE LEARNING CENTER	TAMPA	HILLSBOROUGH COUNTY	87	63	24
PARADISE LEARNING CENTER II	TAMPA	HILLSBOROUGH COUNTY	72	49	23
PARADISE LEARNING CENTER III	TAMPA	HILLSBOROUGH COUNTY	83	60	23
PARADISE LEARNING CENTER V	TAMPA	HILLSBOROUGH COUNTY	106	75	31
PARDO-LEON, ONIDIA	TAMPA	HILLSBOROUGH COUNTY	1	1	0
PARK A TOT DAY CARE CENTER	TAMPA	HILLSBOROUGH COUNTY	155	155	0
PATRON-PRADAS, LIDAIXA DE LAS MERCEDES	TAMPA	HILLSBOROUGH COUNTY	2	2	0
PEASE, CASSANDRA	TAMPA	HILLSBOROUGH COUNTY	7	7	0
PEILLON, DANIA	TAMPA	HILLSBOROUGH COUNTY	5	5	0
PELAEZ-MACKLEM, LENA MARIA	TAMPA	HILLSBOROUGH COUNTY	7	3	4
PENA, YAMILA	TAMPA	HILLSBOROUGH COUNTY	1	1	0
PEPIN ACADEMIES AFTER SCHOOL PROGRAM	TAMPA	HILLSBOROUGH COUNTY	3	3	0
PERALES, IRENE A	PLANT CITY	HILLSBOROUGH COUNTY	1	1	0
PEREIRA, DOROTHY	TAMPA	HILLSBOROUGH COUNTY	4	4	0
PEREZ, MIRIAM	TAMPA	HILLSBOROUGH COUNTY	3	3	0
PEREZ-GOMEZ, YANNERIS	TAMPA	HILLSBOROUGH COUNTY	3	3	0
PEREZ-GONZALEZ, ALBERTINA	TAMPA	HILLSBOROUGH COUNTY	6	6	0
PEREZ-LEAL, ANGELA M	BRANDON	HILLSBOROUGH COUNTY	4	4	0
PEREZ-VALDES, DAYAMIT M.	TAMPA	HILLSBOROUGH COUNTY	5	5	0
PEREZ-VALDES, MARIA E	TAMPA	HILLSBOROUGH COUNTY	2	2	0
PINECREST MIRNIA'S ACADEMY	TAMPA	HILLSBOROUGH COUNTY	83	64	19
PINOCCHIO'S LEARNING LAND	TAMPA	HILLSBOROUGH COUNTY	40	29	11
PITSTOP 4 KIDS AFTERSCHOOL INC.	RIVERVIEW	HILLSBOROUGH COUNTY	24	24	0
PLANT CITY LEARNING CENTER INC	PLANT CITY	HILLSBOROUGH COUNTY	207	165	42
PLAY 'N' LEARN CHILDREN'S DEVELOPMENT CT	TAMPA	HILLSBOROUGH COUNTY	97	66	31
PLAYTIME LEARNING ACADEMY	TAMPA	HILLSBOROUGH COUNTY	83	16	67
PLAYWORLD ACADEMY LLC	TAMPA	HILLSBOROUGH COUNTY	64	45	19
POLICE ATHLETIC LEAGUE	TAMPA	HILLSBOROUGH COUNTY	56	56	0
PORTER, FRANKIE C	BRANDON	HILLSBOROUGH COUNTY	6	6	0
POST SUNSHINE RANCH	BRANDON	HILLSBOROUGH COUNTY	51	14	37
POTRILLE, ADA	TAMPA	HILLSBOROUGH COUNTY	5	5	0
POUS, ANELEY	TAMPA	HILLSBOROUGH COUNTY	12	12	0
POWELL, PAULA M	TAMPA	HILLSBOROUGH COUNTY	10	10	0
PRADO, MERCEDES	TAMPA	HILLSBOROUGH COUNTY	7	7	0
PRECIOUS GEMS ACADEMY	SEFFNER	HILLSBOROUGH COUNTY	101	82	19
PRECIOUS ONES LEARNING CENTER	TAMPA	HILLSBOROUGH COUNTY	31	23	8
PRIMAVERA PRESCHOOL, INC	TAMPA	HILLSBOROUGH COUNTY	33	2	31
PRIMROSE SCHOOL OF BLOOMINGDALE	VALRICO	HILLSBOROUGH COUNTY	54	1	53
PRIMROSE SCHOOL OF CARROLLWOOD	TAMPA	HILLSBOROUGH COUNTY	47	0	47
PRIMROSE SCHOOL OF CROSS CREEK	TAMPA	HILLSBOROUGH COUNTY	97	0	97
PRIMROSE SCHOOL OF CROSS CREEK-OLD OWNER	TAMPA	HILLSBOROUGH COUNTY	8	0	8
PRIMROSE SCHOOL OF SOUTH TAMPA	TAMPA	HILLSBOROUGH COUNTY	115	0	115
PRIMROSE SCHOOL OF TAMPA PALMS - 3	TAMPA	HILLSBOROUGH COUNTY	66	0	66
PRIMROSE SCHOOL OF TAMPA PALMS-OLD OWNER	TAMPA	HILLSBOROUGH COUNTY	6	0	6
PRIMROSE SCHOOL OF WESTCHASE	TAMPA	HILLSBOROUGH COUNTY	109	3	106
PROGRESS VILLAGE ACADEMY	TAMPA	HILLSBOROUGH COUNTY	34	34	0
PUPO-LEYVA, MARILIN	TAMPA	HILLSBOROUGH COUNTY	2	2	0
QUANTUM LEAP FARM, INC.	ODESSA	HILLSBOROUGH COUNTY	1	0	1
QUINTANA-GARCIA, YANELA	TAMPA	HILLSBOROUGH COUNTY	3	3	0
QUINTANA-PEREZ, MARTA M	TAMPA	HILLSBOROUGH COUNTY	1	1	0

Provider Name	City	County	Children Served		
			Total	School Readiness	VPK
QUINTERO-GARCELL, ODALYS	TAMPA	HILLSBOROUGH COUNTY	5	5	0
R' CLUB EARLY LEARNING ACADEMY	TEMPLE TERRACE	HILLSBOROUGH COUNTY	76	38	38
RAINBOW OF KIDS ACADEMY	TAMPA	HILLSBOROUGH COUNTY	68	52	16
RAMOS, CARMEN BLANCO	TAMPA	HILLSBOROUGH COUNTY	3	3	0
REDDISH, TAMMY D	TAMPA	HILLSBOROUGH COUNTY	3	3	0
REINA, MIRIAM	TAMPA	HILLSBOROUGH COUNTY	2	2	0
RESURRECTION EARLY CHILDHOOD CTR	RIVERVIEW	HILLSBOROUGH COUNTY	29	7	22
RETUERTO, MARIA M	TAMPA	HILLSBOROUGH COUNTY	2	2	0
REYES, OLGA M	TAMPA	HILLSBOROUGH COUNTY	7	7	0
RICARDO, MARILIN	TAMPA	HILLSBOROUGH COUNTY	14	14	0
RICARDO-PROENZA, YULEIDIS	TAMPA	HILLSBOROUGH COUNTY	5	5	0
RICHARDSON, SHANNON N	TAMPA	HILLSBOROUGH COUNTY	18	18	0
RIESGO, SOLANGEL	TAMPA	HILLSBOROUGH COUNTY	9	9	0
RILEY, ANITA A	TAMPA	HILLSBOROUGH COUNTY	9	9	0
RIVERA, FLILDA	TAMPA	HILLSBOROUGH COUNTY	3	3	0
RIVERA, LAURA I	TAMPA	HILLSBOROUGH COUNTY	2	2	0
RIZO-SIERRA, YADAMI	TAMPA	HILLSBOROUGH COUNTY	7	7	0
ROBERSON, SHENEDA S	TAMPA	HILLSBOROUGH COUNTY	17	17	0
ROBINSON, CYNTHIA E	TAMPA	HILLSBOROUGH COUNTY	9	9	0
ROBINSON, KELENE D	TAMPA	HILLSBOROUGH COUNTY	20	20	0
RODRIGUEZ, MARILIN	TAMPA	HILLSBOROUGH COUNTY	3	3	0
RODRIGUEZ, TAHUMARA	TAMPA	HILLSBOROUGH COUNTY	5	5	0
RODRIGUEZ, YULEYDIS B	TAMPA	HILLSBOROUGH COUNTY	3	3	0
RODRIGUEZ-CARVAJAL, GRACE	TAMPA	HILLSBOROUGH COUNTY	1	1	0
RODRIGUEZ-FERNANDEZ, YOSLAINE	TAMPA	HILLSBOROUGH COUNTY	4	4	0
RODRIGUEZ-REGALADO, OLGA	TAMPA	HILLSBOROUGH COUNTY	8	8	0
RODRIGUEZ-SERRANO, FRANCES	TAMPA	HILLSBOROUGH COUNTY	6	6	0
ROIG, YAMILKA	TAMPA	HILLSBOROUGH COUNTY	3	3	0
ROJAS, DAYAMI	TAMPA	HILLSBOROUGH COUNTY	16	16	0
ROMERO, AMARILYS	TAMPA	HILLSBOROUGH COUNTY	5	5	0
RONDON, ANDREA	TAMPA	HILLSBOROUGH COUNTY	4	4	0
RONDON, TAMARA	TAMPA	HILLSBOROUGH COUNTY	7	7	0
ROSALES, MADELINE	TAMPA	HILLSBOROUGH COUNTY	3	3	0
ROSALES-GOODWIN, MICHELLE C	BRANDON	HILLSBOROUGH COUNTY	11	11	0
RUIZ, DIANELIS	SEFFNER	HILLSBOROUGH COUNTY	6	6	0
RUSKIN CHRISTIAN SCHOOL	RUSKIN	HILLSBOROUGH COUNTY	42	0	42
RUSKIN U M CHURCH DAY CARE CENTER	RUSKIN	HILLSBOROUGH COUNTY	83	48	35
SAFETYLAND DAY NURSERY & KINDERGARTEN	TAMPA	HILLSBOROUGH COUNTY	256	187	69
SANCHEZ, GRETTEL	TAMPA	HILLSBOROUGH COUNTY	5	5	0
SANCHEZ-VALDES, ALINA	TAMPA	HILLSBOROUGH COUNTY	3	3	0
SANDY'S LEARNING CENTER	LUTZ	HILLSBOROUGH COUNTY	62	48	14
SANTOS, KATIANA	TAMPA	HILLSBOROUGH COUNTY	3	3	0
SARMIENTO, YOANNA	TAMPA	HILLSBOROUGH COUNTY	6	6	0
SCHOLARS CHRISTIAN ACADEMY	TAMPA	HILLSBOROUGH COUNTY	81	57	24
SEE SAW JUNCTION LEARNING CENTER	TAMPA	HILLSBOROUGH COUNTY	102	102	0
SEE SAW JUNCTION LEARNING CTR II	TAMPA	HILLSBOROUGH COUNTY	76	76	0
SEFFNER EARLY CHILDHOOD CENTER	SEFFNER	HILLSBOROUGH COUNTY	47	34	13
SEKIRIME, SHIRA	TAMPA	HILLSBOROUGH COUNTY	9	9	0
SELLERS, JOE ANN	TAMPA	HILLSBOROUGH COUNTY	4	4	0
SEMINOLE HEIGHTS UNITED METHODIST PRESCH	TAMPA	HILLSBOROUGH COUNTY	32	13	19
SHARPE, BARBARA A	TAMPA	HILLSBOROUGH COUNTY	13	13	0
SHEPHERD, NICOLE DENISE	SEFFNER	HILLSBOROUGH COUNTY	23	23	0
SHINING STARS PRESCHOOL ACADEMY, INC.	BRANDON	HILLSBOROUGH COUNTY	94	68	26
SILVA, VILMA A	TAMPA	HILLSBOROUGH COUNTY	4	4	0
SIMMONS CHILD WORLD	BRANDON	HILLSBOROUGH COUNTY	119	95	24
SKY HIGH LEARNING ACADEMY LLC	TAMPA	HILLSBOROUGH COUNTY	87	69	18
SMART KIDS ACADEMY LLC	PLANT CITY	HILLSBOROUGH COUNTY	59	50	9
SMART START PRE-PREP	TAMPA	HILLSBOROUGH COUNTY	64	15	49
SMART STARTS AT ST. JOHN	TAMPA	HILLSBOROUGH COUNTY	37	6	31



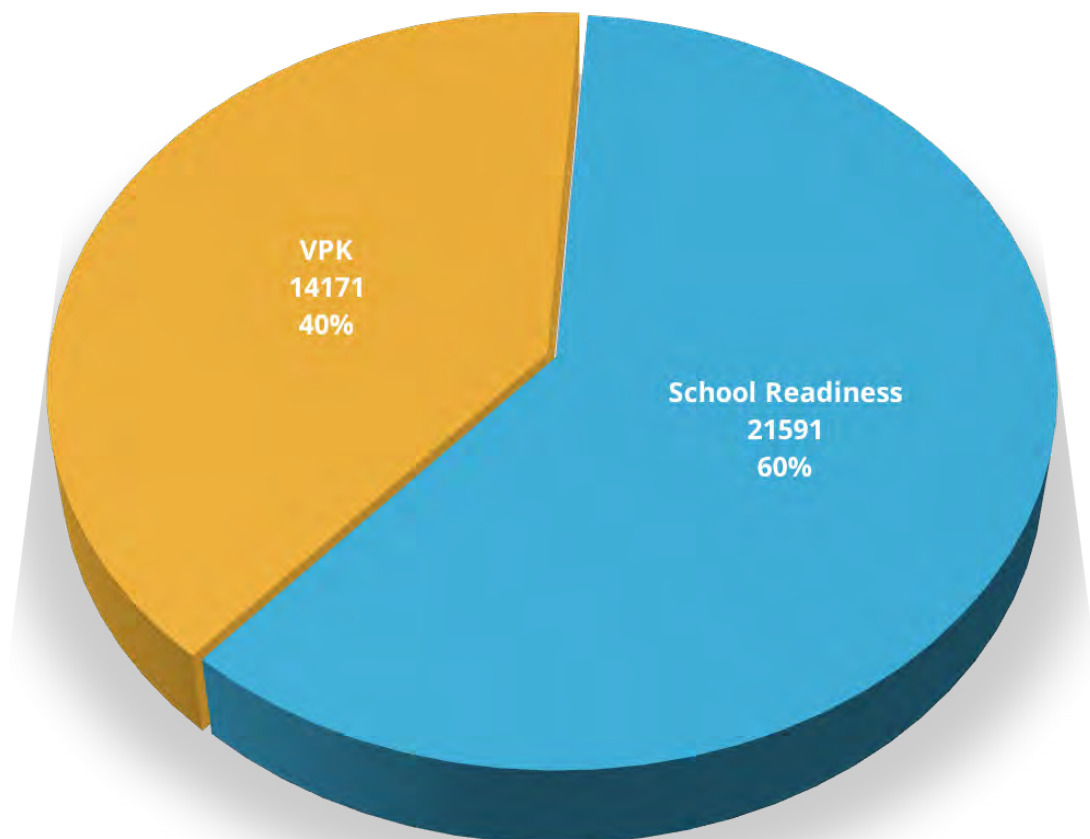
Provider Name	City	County	Children Served		
			Total	School Readiness	VPK
SMART STEPS ACADEMY LLC	TAMPA	HILLSBOROUGH COUNTY	34	22	12
SMITH, AISHA L	PLANT CITY	HILLSBOROUGH COUNTY	3	3	0
SMITH, MARKITA M	TAMPA	HILLSBOROUGH COUNTY	15	15	0
SMITH, TOMEKA N	PLANT CITY	HILLSBOROUGH COUNTY	1	1	0
SOTTO-FUENTES, LLILIANA	TAMPA	HILLSBOROUGH COUNTY	4	4	0
SOUTHSHORE MONTESSORI	APOLLO BEACH	HILLSBOROUGH COUNTY	54	0	54
ST. ANDREWS UNITED METHODIST PRESCHOOL	BRANDON	HILLSBOROUGH COUNTY	72	0	72
ST. JAMES UNITED METHODIST PRESCHOOL	TAMPA	HILLSBOROUGH COUNTY	89	0	89
ST. JOSEPH CATHOLIC SCHOOL	TAMPA	HILLSBOROUGH COUNTY	39	0	39
ST. JOSEPH'S CHILD CARE CENTER	TAMPA	HILLSBOROUGH COUNTY	20	8	12
ST. PAUL CATHOLIC PRESCHOOL	TAMPA	HILLSBOROUGH COUNTY	59	0	59
ST. PETER CLAVER CATHOLIC SCHOOL	TAMPA	HILLSBOROUGH COUNTY	37	18	19
ST. STEPHEN CATHOLIC SCHOOL	RIVERVIEW	HILLSBOROUGH COUNTY	6	6	0
ST. TIMOTHY CATHOLIC EARLY CHILDHOOD CTR	LUTZ	HILLSBOROUGH COUNTY	45	0	45
STACI'S LEARNING STATION INC	RIVERVIEW	HILLSBOROUGH COUNTY	46	6	40
STAR GATE ACADEMY	TAMPA	HILLSBOROUGH COUNTY	27	27	0
STEP AHEAD ACADEMY	TAMPA	HILLSBOROUGH COUNTY	142	116	26
STEP ONE INCORPORATED	TAMPA	HILLSBOROUGH COUNTY	32	20	12
STEPS TO MATURITY LEARNING CENTER	TAMPA	HILLSBOROUGH COUNTY	245	221	24
STORYBOOK RANCH PRESCHOOL	TAMPA	HILLSBOROUGH COUNTY	21	0	21
STREETS, VERONICA E	BRANDON	HILLSBOROUGH COUNTY	4	4	0
SUCCESSFUL HANDS LEARNING CENTER	TAMPA	HILLSBOROUGH COUNTY	44	27	17
SUNCOAST ACADEMY INC	TAMPA	HILLSBOROUGH COUNTY	33	9	24
SUNSHINE ACADEMY	GIBSONTON	HILLSBOROUGH COUNTY	21	21	0
SUNSHINE CHILDREN'S LEARNING CENTER BAY	TAMPA	HILLSBOROUGH COUNTY	93	73	20
SUNSHINE CHILDREN'S LEARNING CNTR KELLY	TAMPA	HILLSBOROUGH COUNTY	88	61	27
TAMAYO, IRMA Y	TAMPA	HILLSBOROUGH COUNTY	5	5	0
TAMPA ADVENTIST ACADEMY	TAMPA	HILLSBOROUGH COUNTY	28	11	17
TAMPA BAY CHRISTIAN ACADEMY OF FL. INC	TAMPA	HILLSBOROUGH COUNTY	84	37	47
TAMPA ELITE SPORTS ACADEMY	TAMPA	HILLSBOROUGH COUNTY	77	43	34
TAYLOR, BRENDA	TAMPA	HILLSBOROUGH COUNTY	8	8	0
TAYLOR, CAROL D	TAMPA	HILLSBOROUGH COUNTY	13	13	0
TAYLOR, DEBORA DBA KIDDY KORNER FAM CC	TAMPA	HILLSBOROUGH COUNTY	8	8	0
TEMPLE TERRACE PRESBYTERIAN WEEKDAY SCH	TEMPLE TERRACE	HILLSBOROUGH COUNTY	96	36	60
TEMPLE TERRACE UMC PRESCHOOL	TAMPA	HILLSBOROUGH COUNTY	9	0	9
THARPE, EDVENA S	TAMPA	HILLSBOROUGH COUNTY	8	8	0
THARPE, TREVA L	TAMPA	HILLSBOROUGH COUNTY	8	8	0
THE ACADEMY AT TRUE SANCTUARY OF PRAISE	RIVERVIEW	HILLSBOROUGH COUNTY	47	35	12
THE BRANDON MONTESSORI SCHL AT RIVERHILL	VALRICO	HILLSBOROUGH COUNTY	49	0	49
THE GODDARD SCHOOL-BRICK PLACE	TAMPA	HILLSBOROUGH COUNTY	31	0	31
THE GODDARD SCHOOL-TAMPA OAKS	TAMPA	HILLSBOROUGH COUNTY	60	17	43
THE GROWING TREE ACADEMY	TAMPA	HILLSBOROUGH COUNTY	44	27	17
THE LEARNING CENTER AT ST. JOHN	TAMPA	HILLSBOROUGH COUNTY	39	16	23
THE LEARNING EXPERIENCE #16232	LITHIA	HILLSBOROUGH COUNTY	56	0	56
THE LEARNING EXPERIENCE BRANDON	BRANDON	HILLSBOROUGH COUNTY	21	0	21
THE LEARNING EXPERIENCE RIVERVIEW	RIVERVIEW	HILLSBOROUGH COUNTY	55	0	55
THE MONTESSORI HOUSE DAY SCHL EHRlich RD	TAMPA	HILLSBOROUGH COUNTY	23	0	23
THE MONTESSORI HOUSE DAY SCHL-HANLEY RD	TAMPA	HILLSBOROUGH COUNTY	21	0	21
THE PEACOCK'S PLUME COMPANY	VALRICO	HILLSBOROUGH COUNTY	113	58	55
THE RIVERVIEW MONTESSORI SCH RIVERCREST	RIVERVIEW	HILLSBOROUGH COUNTY	39	0	39
THE VILLAGE EARLY LEARNING CENTER	BRANDON	HILLSBOROUGH COUNTY	117	10	107
THERAKIDS PLUS, INC.	LUTZ	HILLSBOROUGH COUNTY	1	0	1
THOMAS, GINGER I	TAMPA	HILLSBOROUGH COUNTY	11	11	0
THOMAS, SANDRA J.	TAMPA	HILLSBOROUGH COUNTY	9	9	0
THOMPSON, NEOMI R	TAMPA	HILLSBOROUGH COUNTY	16	12	4
TIME OF WONDER ACADEMY	TAMPA	HILLSBOROUGH COUNTY	31	10	21
TIMS PRESCHOOL INC.	LUTZ	HILLSBOROUGH COUNTY	57	0	57
TINY FEET LEARNING ACADEMY	TAMPA	HILLSBOROUGH COUNTY	27	17	10
TOGETHER TIME	TAMPA	HILLSBOROUGH COUNTY	18	11	7
TOLEDO, ANILCIE	TAMPA	HILLSBOROUGH COUNTY	10	10	0

Provider Name	City	County	Children Served		
			Total	School Readiness	VPK
TOP KIDS BILINGUAL PRESCHOOL	TAMPA	HILLSBOROUGH COUNTY	54	30	24
TORIKADE INC, VALRICO CHILD CARE	VALRICO	HILLSBOROUGH COUNTY	17	17	0
TORRES, ILEANA	TAMPA	HILLSBOROUGH COUNTY	4	4	0
TROPICAL ACRES CHRISTIAN ACADEMY	RIVERVIEW	HILLSBOROUGH COUNTY	29	29	0
TURNES, SILVIA R.	TAMPA	HILLSBOROUGH COUNTY	2	2	0
TWEETY LEARNING CENTER	TAMPA	HILLSBOROUGH COUNTY	33	12	21
UNIQUE TENDER ANOINTED HANDS ACADEMY	TAMPA	HILLSBOROUGH COUNTY	32	24	8
UNITED CEREBRAL PALSY OF TAMPA BAY, INC.	TAMPA	HILLSBOROUGH COUNTY	79	65	14
UNIVERSAL ACADEMY OF FLORIDA	TAMPA	HILLSBOROUGH COUNTY	20	0	20
UNIVERSITY OF SOUTH FLORIDA FAMILY CNTR	TAMPA	HILLSBOROUGH COUNTY	33	4	29
USAA CHILD DEVELOPMENT CENTER	TAMPA	HILLSBOROUGH COUNTY	23	1	22
USF PRESCHOOL FOR CREATIVE LEARNING	TAMPA	HILLSBOROUGH COUNTY	35	9	26
V I P CHILD CARE CENTER	TAMPA	HILLSBOROUGH COUNTY	42	30	12
VALDES, ZORANGEL	TAMPA	HILLSBOROUGH COUNTY	5	5	0
VALDES-FERNANDEZ, NIURKA	TAMPA	HILLSBOROUGH COUNTY	1	1	0
VALVERDE, MAGDA	TAMPA	HILLSBOROUGH COUNTY	7	2	5
VARGAS, RAYZA Y	TAMPA	HILLSBOROUGH COUNTY	3	3	0
VEITIA-CHAVIANO, LIURIS	TAMPA	HILLSBOROUGH COUNTY	3	3	0
VELAZQUEZ TORRES, YUNIA	TAMPA	HILLSBOROUGH COUNTY	1	1	0
VIGNAU, MARIA T.	TAMPA	HILLSBOROUGH COUNTY	3	3	0
VILLAMAR-PEREZ, NEREYDA	TAMPA	HILLSBOROUGH COUNTY	1	1	0
WALDEN LAKE EARLY LEARNING CENTER	PLANT CITY	HILLSBOROUGH COUNTY	61	0	61
WALKER-ONZY, SONYA J	TAMPA	HILLSBOROUGH COUNTY	12	12	0
WALTON ACADEMY AFTERSCHOOL ENRICHMENT	TAMPA	HILLSBOROUGH COUNTY	30	30	0
WASHINGTON, LAURA M	TAMPA	HILLSBOROUGH COUNTY	1	1	0
WE ARE THE WORLD LEARNING CENTER	TAMPA	HILLSBOROUGH COUNTY	92	69	23
WE ARE THE WORLD LEARNING CENTER II	TAMPA	HILLSBOROUGH COUNTY	86	64	22
WEST TAMPA EARLY LEARNING CENTER	TAMPA	HILLSBOROUGH COUNTY	57	57	0
WESTBROOK, FELICIA H.	TAMPA	HILLSBOROUGH COUNTY	1	1	0
WESTMINSTER ACADEMY	BRANDON	HILLSBOROUGH COUNTY	22	0	22
WESTTOWN CHRISTIAN ACADEMY	TAMPA	HILLSBOROUGH COUNTY	40	0	40
WHITEHEAD, RAELYN	BRANDON	HILLSBOROUGH COUNTY	2	2	0
WHIZ KIDS EARLY LEARNING CENTER	VALRICO	HILLSBOROUGH COUNTY	5	5	0
WILLIAMS, DAWN LISA	TAMPA	HILLSBOROUGH COUNTY	8	8	0
WILLIAMS, LOLA M	TAMPA	HILLSBOROUGH COUNTY	2	2	0
WILLIAMS, MARILYN L	TAMPA	HILLSBOROUGH COUNTY	18	18	0
WILLIAMS, PAMELA DIANE	PLANT CITY	HILLSBOROUGH COUNTY	10	10	0
WILSON, KAREN	RUSKIN	HILLSBOROUGH COUNTY	28	28	0
WINDSOR LEARNING ACADEMY	TAMPA	HILLSBOROUGH COUNTY	55	29	26
WONDERLAND DAY CARE INC.	TAMPA	HILLSBOROUGH COUNTY	73	73	0
WRIGHT'S WONDERLAND II	TAMPA	HILLSBOROUGH COUNTY	36	26	10
WRIGHT'S WONDERLAND OF LEARNING CC CTR	TAMPA	HILLSBOROUGH COUNTY	34	34	0
WRIGHT, PLAKISIA Z	TAMPA	HILLSBOROUGH COUNTY	8	8	0
WRIGHT-CASTILLO, SYLVIA ELIZABETH	TAMPA	HILLSBOROUGH COUNTY	14	10	4
WYNN, MARY N	TAMPA	HILLSBOROUGH COUNTY	6	6	0
YANES, ALINA	BRANDON	HILLSBOROUGH COUNTY	7	7	0
YBOR EARLY CHILDHOOD LEARNING CENTER	TAMPA	HILLSBOROUGH COUNTY	35	35	0
YMCA BOB GILBERTSON CENTRAL CITY	TAMPA	HILLSBOROUGH COUNTY	29	29	0
YMCA BOB SIERRA YOUTH AND FAMILY CENTER	TAMPA	HILLSBOROUGH COUNTY	25	5	20
YMCA CAMP CRISTINA	RIVERVIEW	HILLSBOROUGH COUNTY	16	16	0
YMCA NEW TAMPA FAMILY	TAMPA	HILLSBOROUGH COUNTY	2	2	0
YMCA NORTH BRANDON FAMILY	SEFFNER	HILLSBOROUGH COUNTY	2	2	0
YMCA NORTHWEST HILLSBOROUGH FAMILY	TAMPA	HILLSBOROUGH COUNTY	17	17	0
YMCA SUCCESS AFTERSCHOOL ALAFIA	VALRICO	HILLSBOROUGH COUNTY	1	1	0
YMCA SUCCESS AFTERSCHOOL ANDERSON	TAMPA	HILLSBOROUGH COUNTY	4	4	0
YMCA SUCCESS AFTERSCHOOL BAYCREST	TAMPA	HILLSBOROUGH COUNTY	8	8	0
YMCA SUCCESS AFTERSCHOOL CARROLLWOOD	TAMPA	HILLSBOROUGH COUNTY	12	12	0
YMCA SUCCESS AFTERSCHOOL CITRUS PARK	TAMPA	HILLSBOROUGH COUNTY	5	5	0
YMCA SUCCESS AFTERSCHOOL ESSRIG	TAMPA	HILLSBOROUGH COUNTY	1	1	0
YMCA SUCCESS AFTERSCHOOL FOREST HILLS	TAMPA	HILLSBOROUGH COUNTY	6	6	0

Provider Name	City	County	Children Served		
			Total	School Readiness	VPK
YMCA SUCCESS AFTERSCHOOL FROST	RIVERVIEW	HILLSBOROUGH COUNTY	10	10	0
YMCA SUCCESS AFTERSCHOOL GORRIE	TAMPA	HILLSBOROUGH COUNTY	4	4	0
YMCA SUCCESS AFTERSCHOOL GRADY	TAMPA	HILLSBOROUGH COUNTY	8	8	0
YMCA SUCCESS AFTERSCHOOL IPPOLITO	RIVERVIEW	HILLSBOROUGH COUNTY	15	15	0
YMCA SUCCESS AFTERSCHOOL LAKE MAGDALENE	TAMPA	HILLSBOROUGH COUNTY	7	7	0
YMCA SUCCESS AFTERSCHOOL LIMONA	BRANDON	HILLSBOROUGH COUNTY	2	2	0
YMCA SUCCESS AFTERSCHOOL MITCHELL	TAMPA	HILLSBOROUGH COUNTY	1	1	0
YMCA SUCCESS AFTERSCHOOL MORGAN WOODS	TAMPA	HILLSBOROUGH COUNTY	5	5	0
YMCA SUCCESS AFTERSCHOOL NELSON	DOVER	HILLSBOROUGH COUNTY	12	12	0
YMCA SUCCESS AFTERSCHOOL PINECREST	LITHIA	HILLSBOROUGH COUNTY	1	1	0
YMCA SUCCESS AFTERSCHOOL PIZZO/MOSI	TAMPA	HILLSBOROUGH COUNTY	9	9	0
YMCA SUCCESS AFTERSCHOOL RIVERHILLS	TEMPLE TERRACE	HILLSBOROUGH COUNTY	6	6	0
YMCA SUCCESS AFTERSCHOOL SEFFNER	SEFFNER	HILLSBOROUGH COUNTY	11	11	0
YMCA SUCCESS AFTERSCHOOL TAMPA PALMS	TAMPA	HILLSBOROUGH COUNTY	8	8	0
YMCA SUCCESS AFTERSCHOOL TOWN N COUNTRY	TAMPA	HILLSBOROUGH COUNTY	12	12	0
YMCA SUCCESS AFTERSCHOOL TWIN LAKES	TAMPA	HILLSBOROUGH COUNTY	12	12	0
YOUNGER YEARS LEARNING CENTER INC	SEFFNER	HILLSBOROUGH COUNTY	39	8	31
ZARZA-MORALES, OLGA	TAMPA	HILLSBOROUGH COUNTY	12	12	0

Data is from the Consolidated Database as of June 2017.

### Children Served in School Readiness and VPK





The Early Learning Coalition of Hillsborough County  
6800 N. Dale Mabry Hwy., Suite 158  
Tampa, Florida 33614  
PH (813) 515-2340 FAX (813) 435-2299  
[www.elchc.org](http://www.elchc.org)